



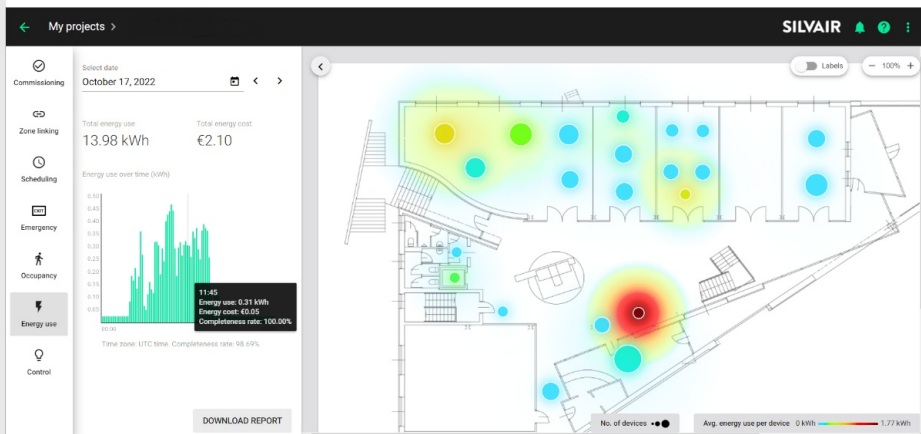
Welcome to another edition of the Silvair newsletter.  
 We have some important news to share with you, so let's get right to it!



## Interview with Simon Slupik for Designing Lighting

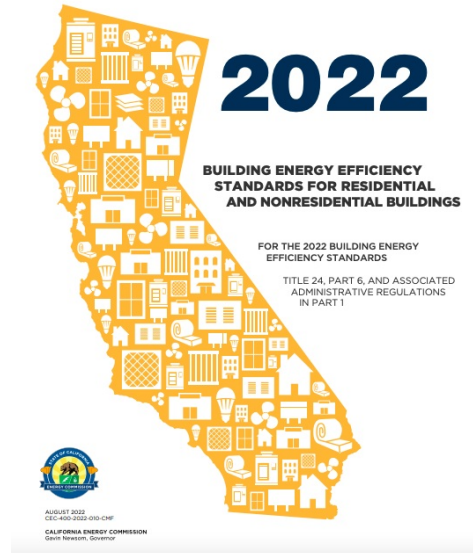
Randy Reid from Edison Report / Designing Lighting interviews Simon Slupik at Light & Building 2022 in Frankfurt. Check Simon's thoughts on lighting controls, security, different market activities, and DALI's presence in America. We would also like to thank all for participating in L+B and meeting our team! We had a great time and see you in 2024!

[WATCH IT](#)



# New lighting control features are available!

We are adding **new display options** with more granularity to energy and occupancy monitoring dashboards. When displaying historical energy or occupancy data, the user can select a specific day and view that data averaged into 15-minute intervals for each area. We have also added **more detailed commissioning reports** to facilitate troubleshooting. Whenever a report is generated, it will now include the results of the most recent mesh quality test.



## Changes in Title24

Craig Dilouie recently wrote an interesting post about [Commercial Buildings Tax Deduction](#) and its meaning for lighting control. Now he highlights two significant changes to Title 24, Part 6, related to lighting controls in its 2022 version.

In terms of lighting controls, the numerous changes include various clarifications and tuning along with two major provisions requiring occupant-sensing in offices larger than 250 sq. ft. and demand-responsive lighting controls. Learn more to see how it may affect your work.

[READ MORE](#)

[Twitter](#) [LinkedIn](#) [Silvair blog](#)

[unsubscribe from this list](#)

[update subscription preferences](#)

[View this email in your browser](#)

**SILVAIR**

