



TIN 4XX

Thorough Examination of Lifting Eyes

This Technical Information Note deals with the thorough examination of lifting eyes.

There are various types of lifting eyes which are used to attach loads to lifting equipment, via lifting accessories such as slings. The question often asked is are the lifting eyes themselves classed as lifting accessories and therefore subject to the thorough examination.

The answer to this question is:-

- If the lifting eyes are able to be removed from the load, for example by unscrewing, they are classed as lifting accessories and must be thoroughly examined at intervals not exceeding six month required by Regulation 9(3)(i) of the *Lifting Operations and Lifting Equipment Regulations 1998* (LOLER). See **Figure 1**.

NOTE: Removable lifting eyes have been classified as lifting accessories by the European Commission's Machinery Directive Working Group in the Working Group Paper - *Directive 2006/42/EC Classification of equipment used for lifting loads with lifting machinery*

- If the lifting eyes are permanently attached to the load, for example by welding, they are part of the load and do not require thorough examination. They do however need to be inspected at appropriate intervals under Regulation 6 of the *Provision and Use of Work Equipment Regulations 1998* (PUWER). See **Figure 2**.



Figure 1 - Examples of Removable Lifting Eyes

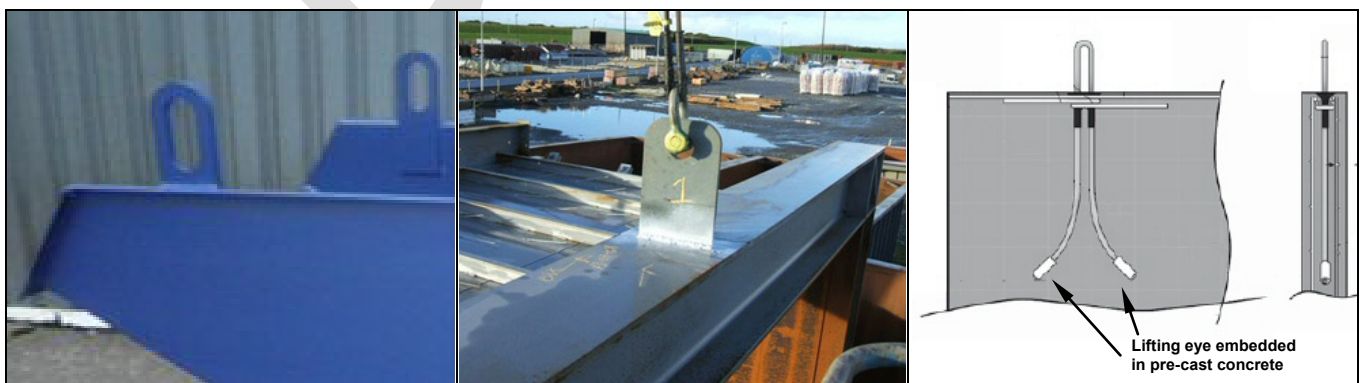


Figure 2 - Examples of Permanently Attached Lifting Eyes