

CONTACT

Production: Karolína Hejnová (+420) 731 519 670 / karolina.vertedance@gmail.com
Light Design / Technician: Tomáš Morávek (+ 420) 777 336 227 / Thomasvec@gmail.com
Sound Design: Tomáš Procházka federsel1@gmail.com

STAGE

Minimal dimension of the stage: height 5m / depth 10m / width 8m.

The sides are covered by black curtains (or open stage, depending on venue specifications).
Up stage are hanging 10 white stripes 1,5 x 5m, located approximately 1-2 m from back wall provided by company. Part of the stage design are 3 RISER (APQ Platform Economy Stage 350) with wooden cover and 8 legs 0,6m long and LED lights from below.
The floor is covered with white marley dance floor.

LIGHT

Programmable lighting desk with 24 submasters (1-3 sub. pages) and possibility to control min. 60 live channels with the ability to do soft or hard patch. Minimum dimming circuits is 60/2kW per circuit. Venue will provide color gels from LEE or ROSCO - color list attached.

If it is not possible, we can bring our own (please, inform us).

- 2 PC 2000W + barndoors (2x 131 Marine Blue)
- 15 Profile Robert Juliat 613 SX 28°-54° 1000W (4 x 200 Double C.T. Blue / 4 x 162 Bastard Amber / 2 x 711 Cold Blue / 2 x 651 HI Sodium)
- 12 PAR 64 C.P. 60 1000W (6 x 200 Double C.T. Blue / 6 x 162 Bastard Amber / 12 x Eighth White Diffusion)
- 18 PAR 64 C.P. 61 1000W (9 x 200 Double C.T. Blue / 9 x 162 Bastard Amber / 18 x Eighth White Diffusion)
- 18 PAR 64 C.P. 62 1000W (9 x 200 Double C.T. Blue / 9 x 162 Bastard Amber / 18 x Eighth White Diffusion)
- 17 Flood Light Asymmetric 1000W (5 x 162 Bastard Amber / 12 x 200 Double C.T. Blue / 17 x 400 LEELux)

SOUND

The music is played from computer provided by the company - stereo out jack 3,5. We prefer to use sound desk with equalizer and phantom 48V insert for the Di-box.

- 2 PA system suitable for venue
- 1 Subwoofer
- 1 Di-box

CABIN

Sound and lighting desk are placed side by side. The cabin is open with no windows.

TIMETABLE

Staff from theatre

| | | |
|--------------|--|--|
| 9h - 15h | SET UP (Stage, decoration, light and sound) | 2 Stage hands, 3 Light and 1 Sound |
| 15h - 16h | FOCUS OF LIGHTS (Stage empty) | 2-3 Light |
| 16h - 17h | PROGRAMMING (Light changes + Sound check) | 1 Light and 1 Sound |
| 17h - 18h | RUN THROUGH (Rehearsal) | 1 Light and 1 Sound |
| 19h - 20h | CLEANING (Cleaning of stage, warm up, etc..) | Responsible staff |
| 20h - 21h | SHOW | Staff needed for the placing the audience into the hall and their safety |
| 21h - 21:30h | STRIKE (All things which belongs to company) | 2 Stage hands and 2 Light |

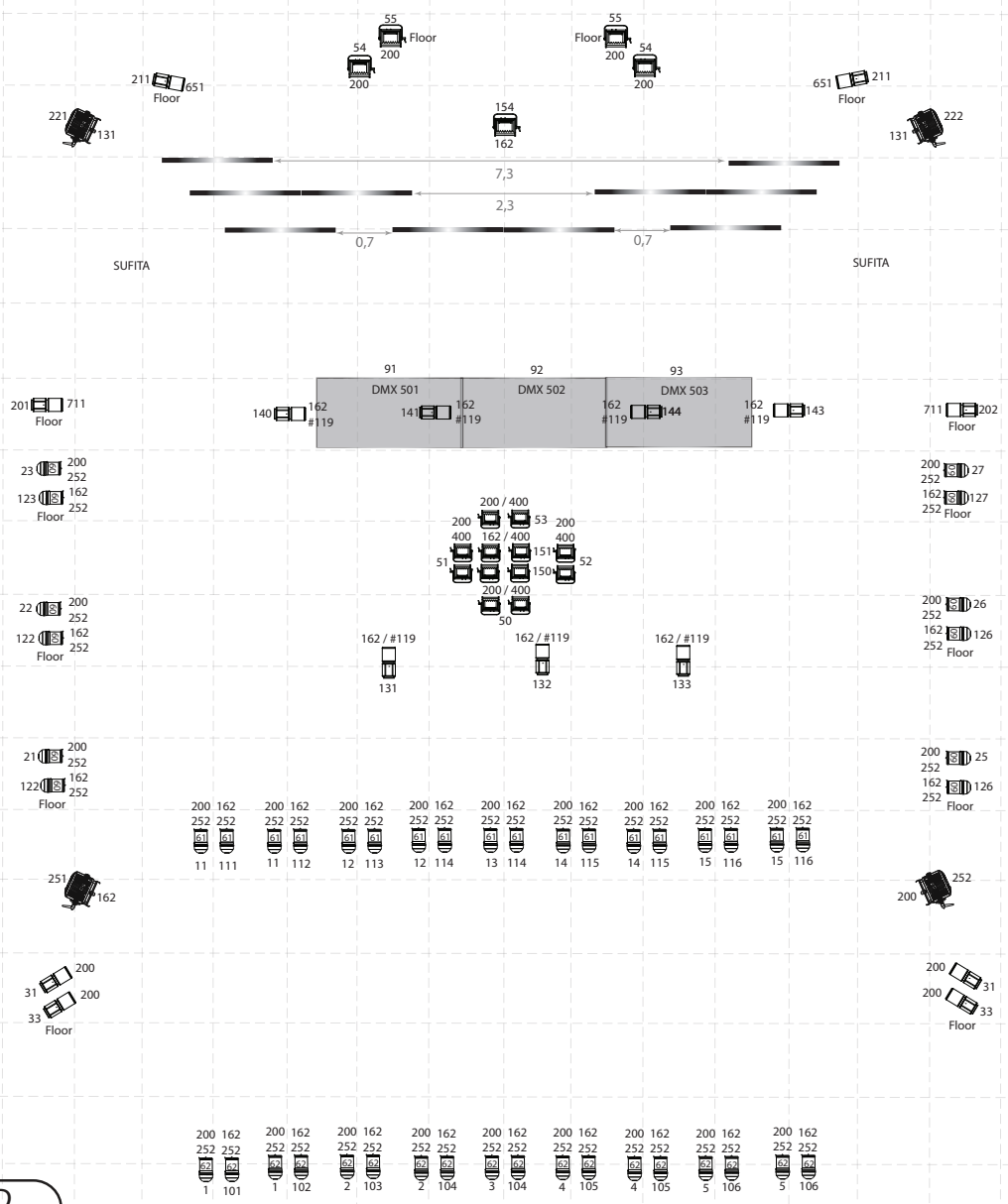
BACKSTAGE

2 dressing-rooms one for 3 male and second for 2 female dancers with mirror, shower and toilet, located close to the stage.

IN CASE OF ANY QUESTION, PLEASE CONTACT US

www.vertedance.org

1 : 100



LEGEND

#32 gel 36° degree

41 chanel

| Instruments | Quantity |
|------------------------------------|----------|
| PC 2000W + Klapy | 4 |
| Robert Juliat 613 SX 28°-54° 1000w | 15 |
| PAR 64 C.P. 60 1000W | 12 |
| PAR 64 C.P. 61 1000W | 18 |
| PAR 64 C.P. 62 1000W | 18 |
| Vana asymetrická 1000W | 17 |

Minimum of circuits 57 x 2kW

NAME : **VERTEDANCE** „Absent“
 DATE : 29.12.2015
 DIMENSION : Height 5m / Depth 12m / Width 12m

Light design
 Tomáš Morávek
 GSM : +420 777 336 227
 E - MAIL : Thomasvec@gmail.com

