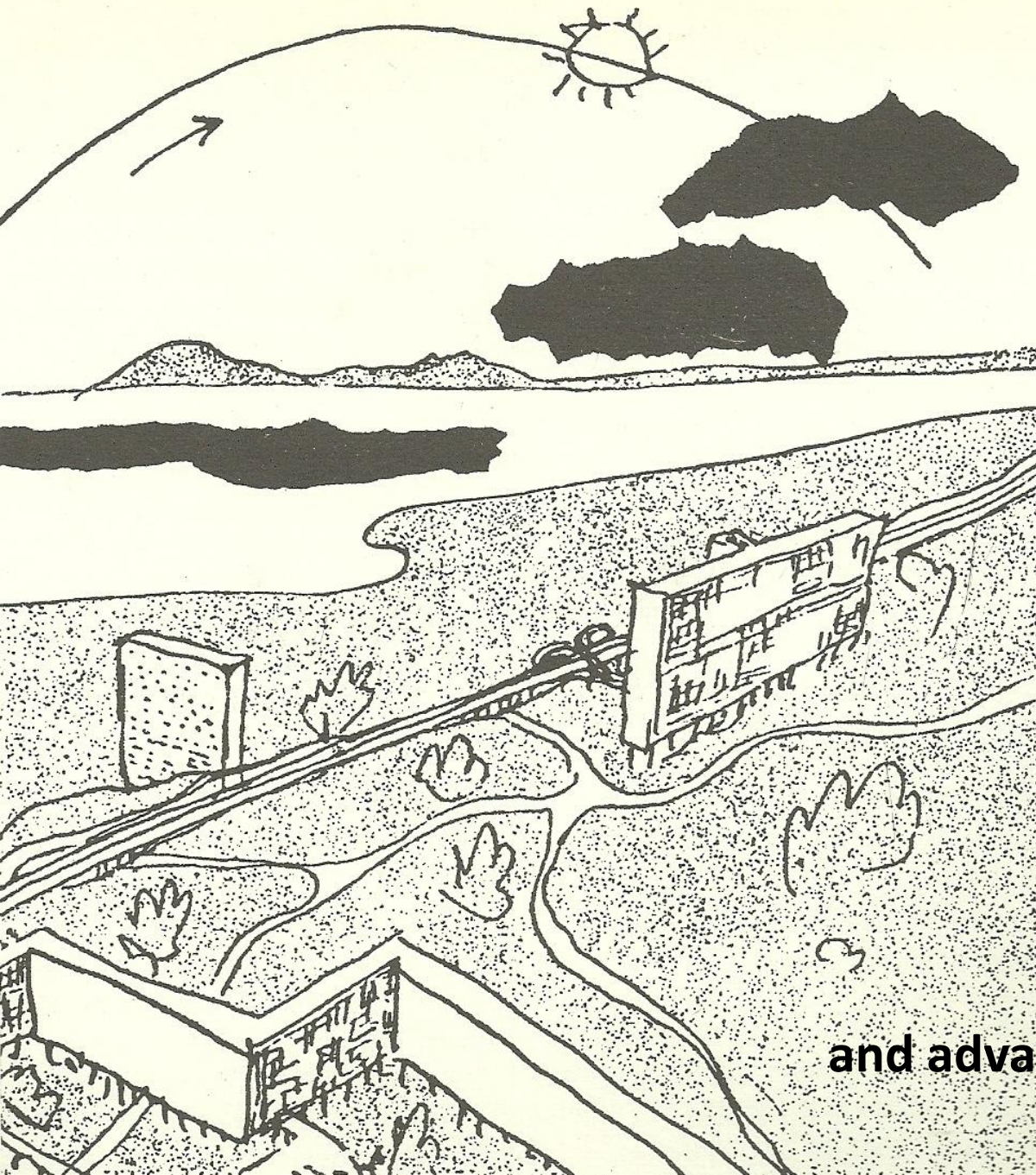


DESTINY OF THE CZECH HOUSING DEVELOPMENTS AFTER YEAR 1989

on the example
of housing development Karviná - Hranice



The Radiant City 1933

„individual freedom
and advantage of shared utilities“

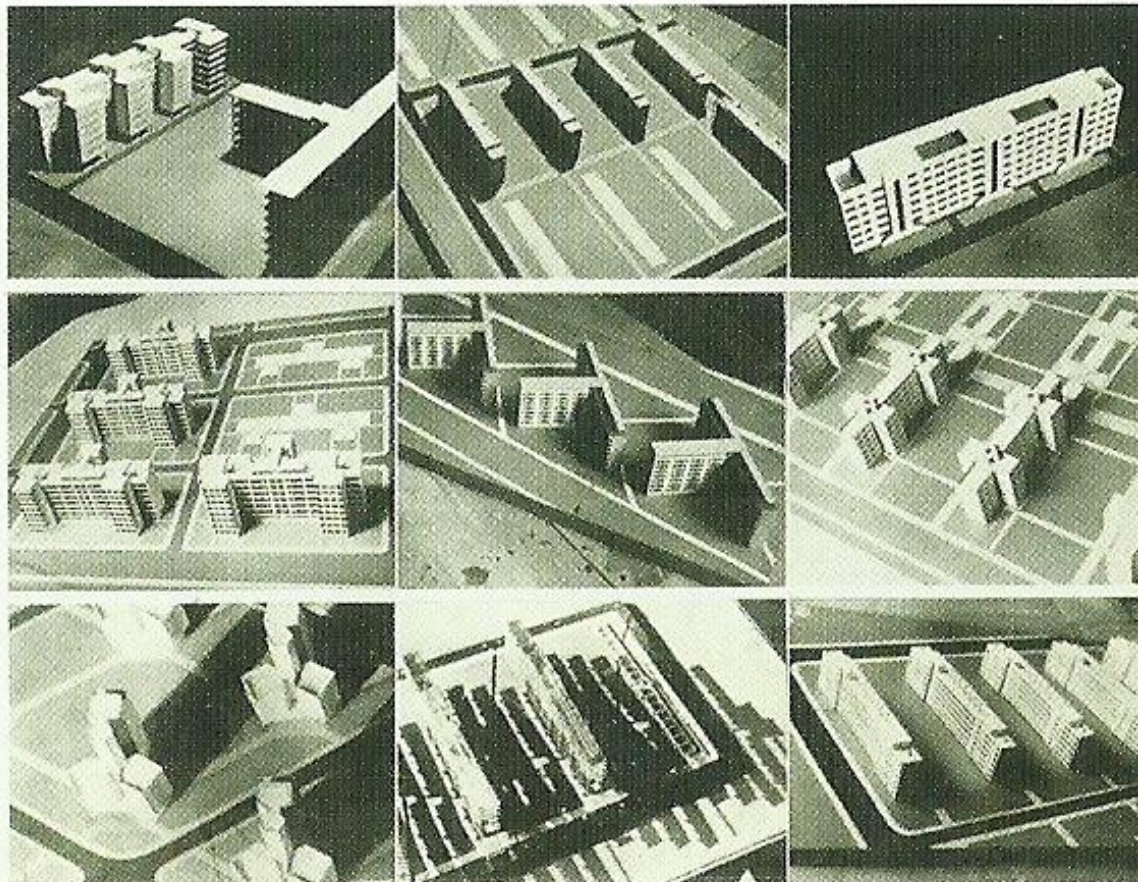
ústav architektury III. a stavby měst II.
české vysoké školy technické v brně

výstava stavebních projektů a náčrtků

galerie vaněk, dominikánské n. 2
od 2. do 14. února 1932, otevřeno
8–12, 2–6, v neděli 9–12, vstupné
kč 1-10, hromadné návštěvy polovici

prof. arch. ing. Jiří Kroha

zahájí výstavu v úterý 2. února o 1 $\frac{1}{2}$ 20 hod.
oznámení platí jako pozvánka k otevření

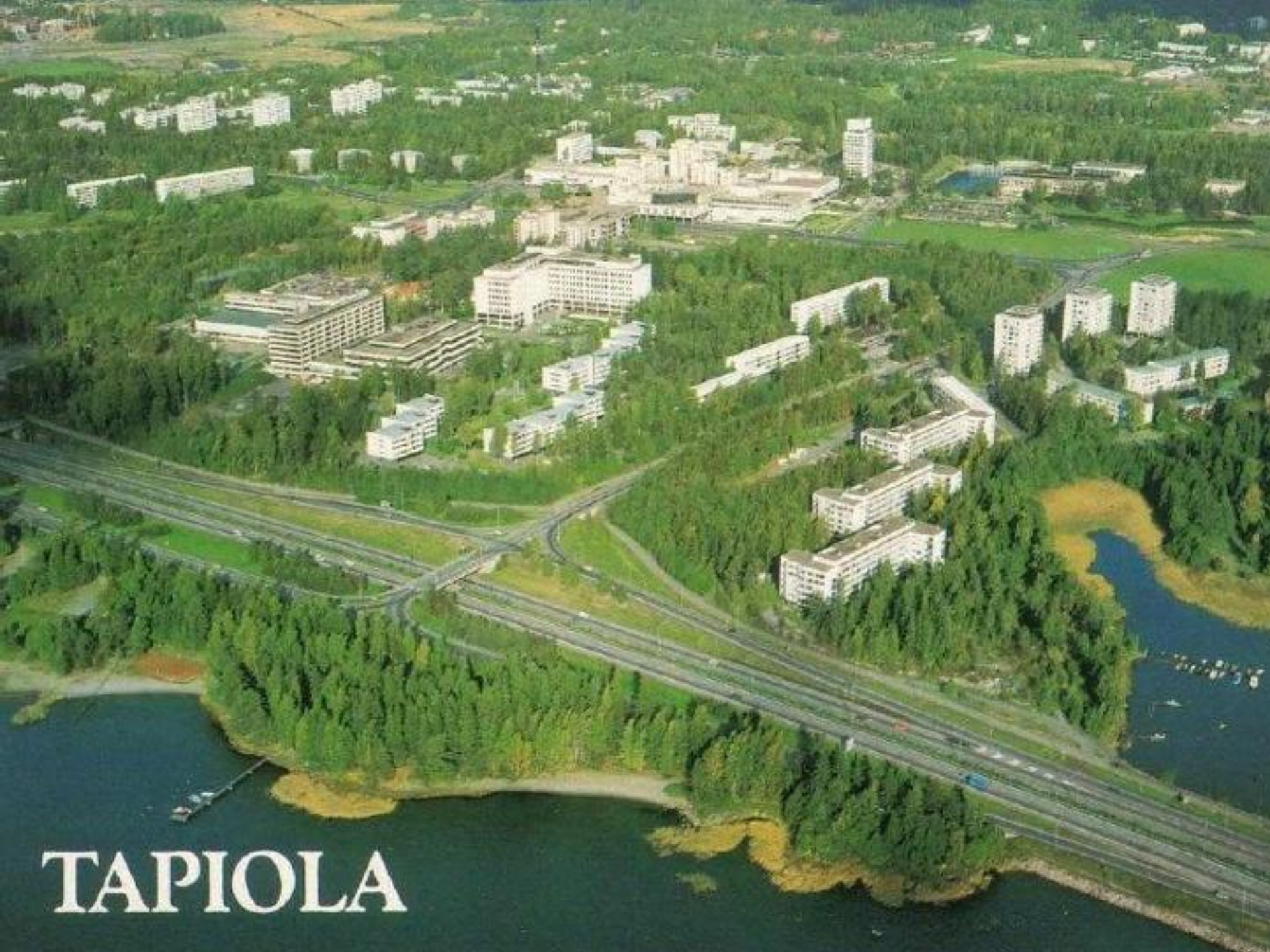


Jiří Kroha 1932

**Invitation on student exhibition of housing,
Czech Technical University in Brno**

**After World War II.
DREAMS.....**

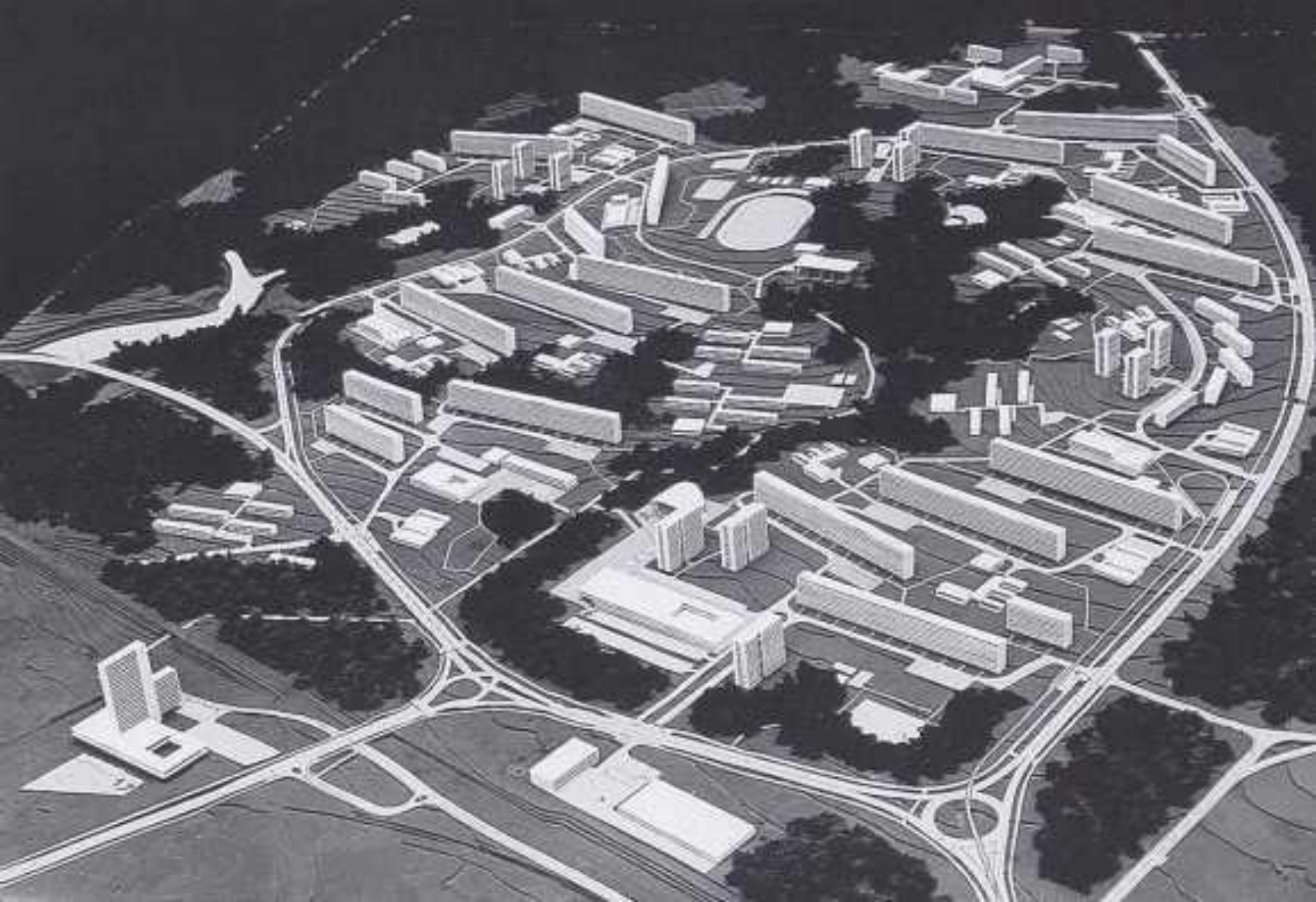




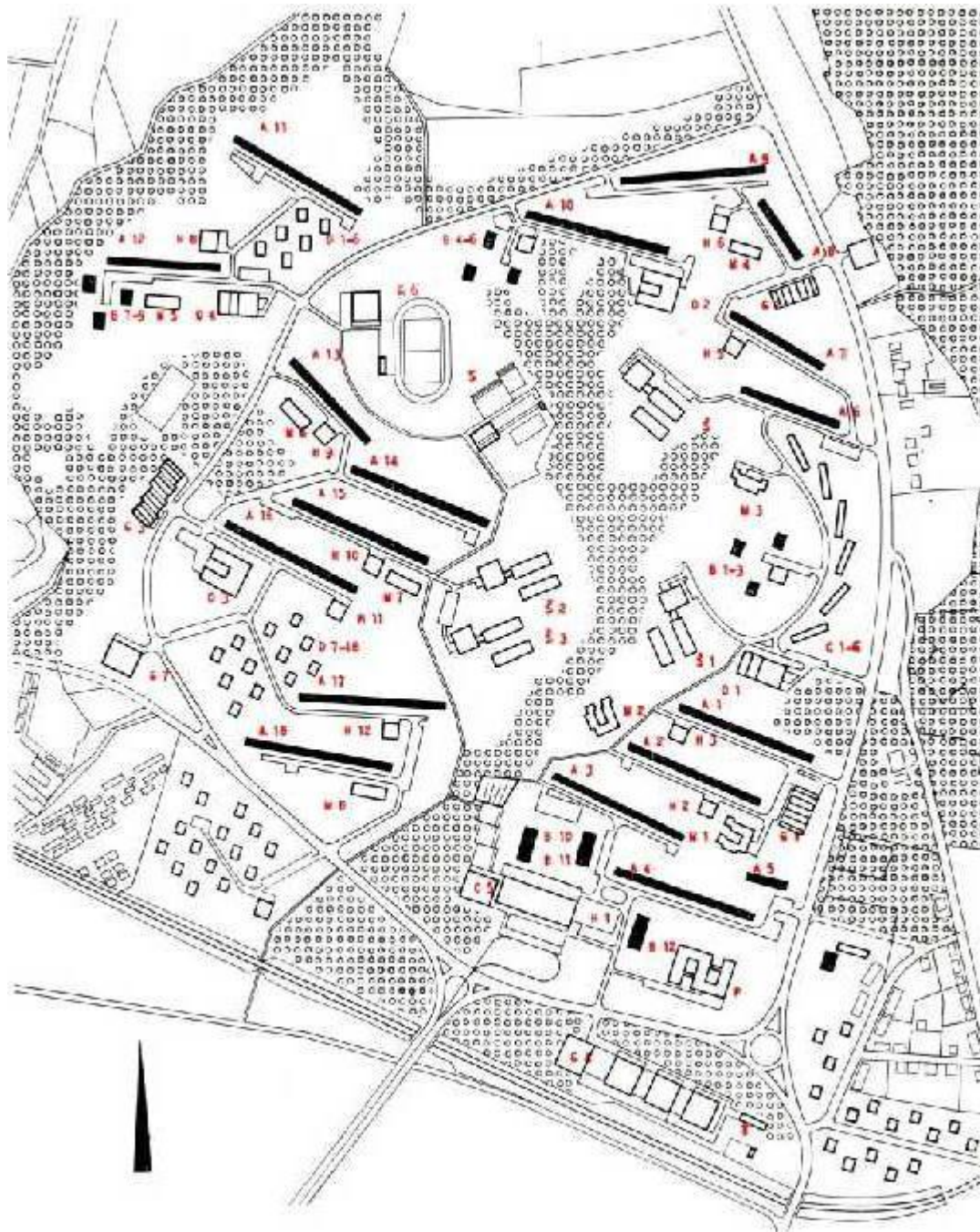
TAPIOLA



Idea of public spaces in Tapiola, Finland



Housing development in Brno – Lesná, built 1962-1970



Design 1962

The team of architects:

František Zounek

Viktor Rudiš

Ladislav Volák

Miroslav Dufek

Building period: 1962 – 1970

Inhabitants: 20 500

Flats: 5 920

Density: 197 inhabit. / ha

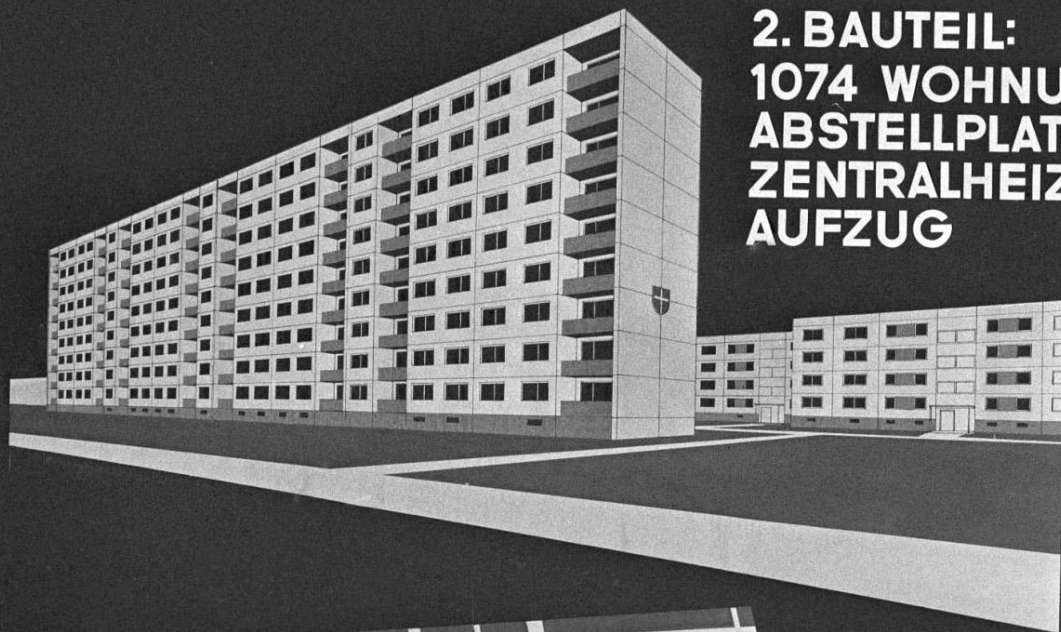
Costs: 548 000 000,- Kčs

Costs per one flat: 95 000,-
Kčs

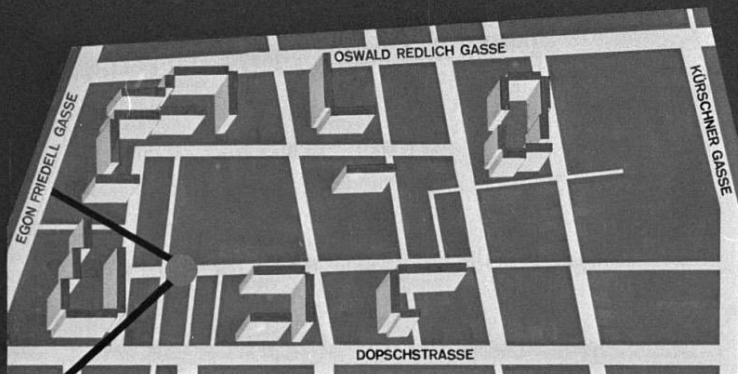




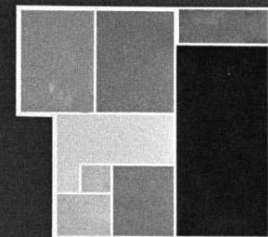
DIE STADT WIEN GIBT AUSKUNFT: WOHNHAUSANLAGE WIEN 21, GROSSFELDSIEDLUNG



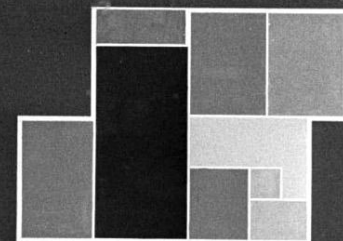
**2. BAUTEIL:
1074 WOHNUNGEN
ABSTELLPLATZ FÜR 358 PKW
ZENTRALHEIZUNG
AUFZUG**



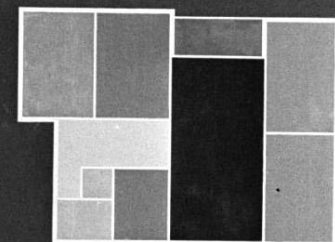
- VORRAUM
- KÜCHE
- BAD WC
- WOHNRAUM
- SCHLAFZIMMER
- KINDERSCHLAFZ.
- BALKON



**TYPE C 76 m²
649 WOHNUNGEN**



**TYPE D 89 m²
244 WOHNUNGEN**

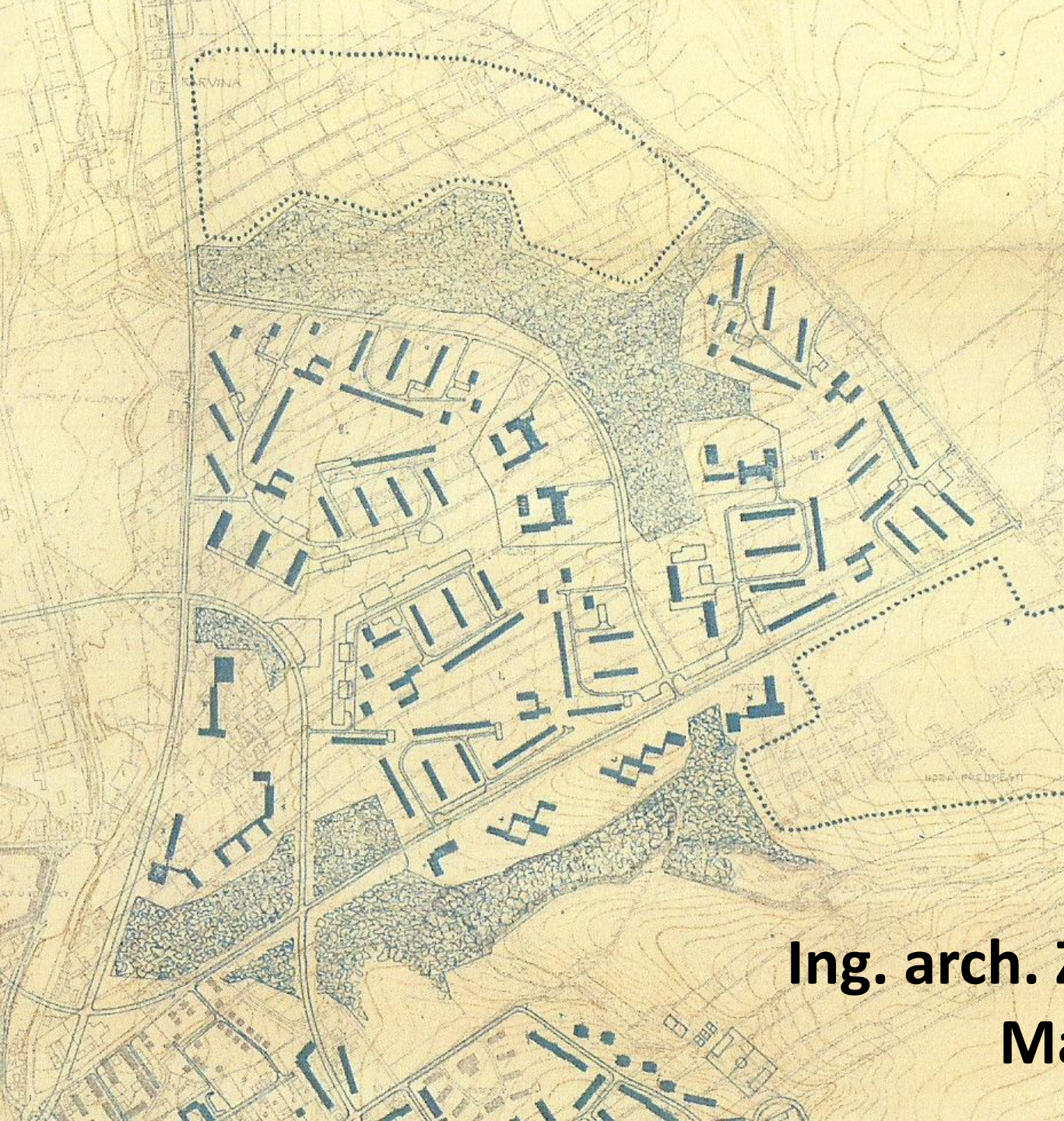


**TYPE E 104 m²
181 WOHNUNGEN**

**DIE STADT WIEN BAUT UND FINANZIERT JÄHRLICH
RUND 12500 WOHNUNGEN**



Housing development Karviná - Hranice



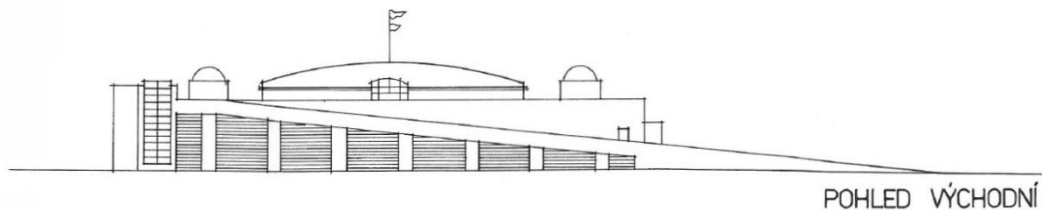
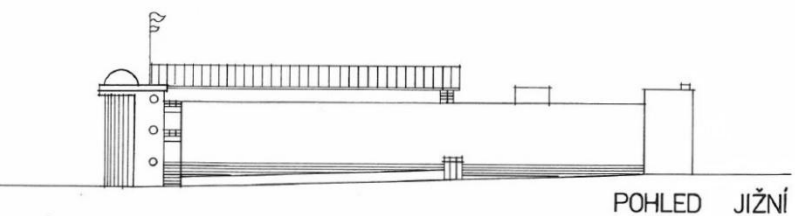
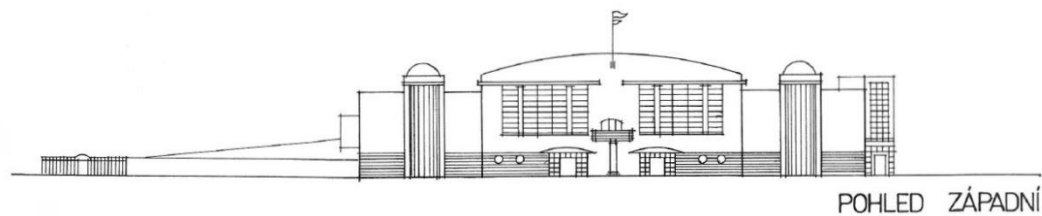
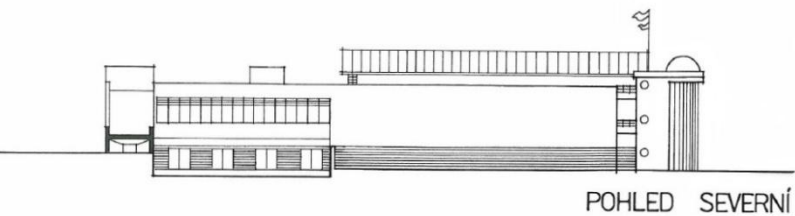
Ing. arch. Zoja Wallerová
Master plan 1962

1962-2012 + 50 years

Detailed master plan
Karviná-Hranice
4500 of flats

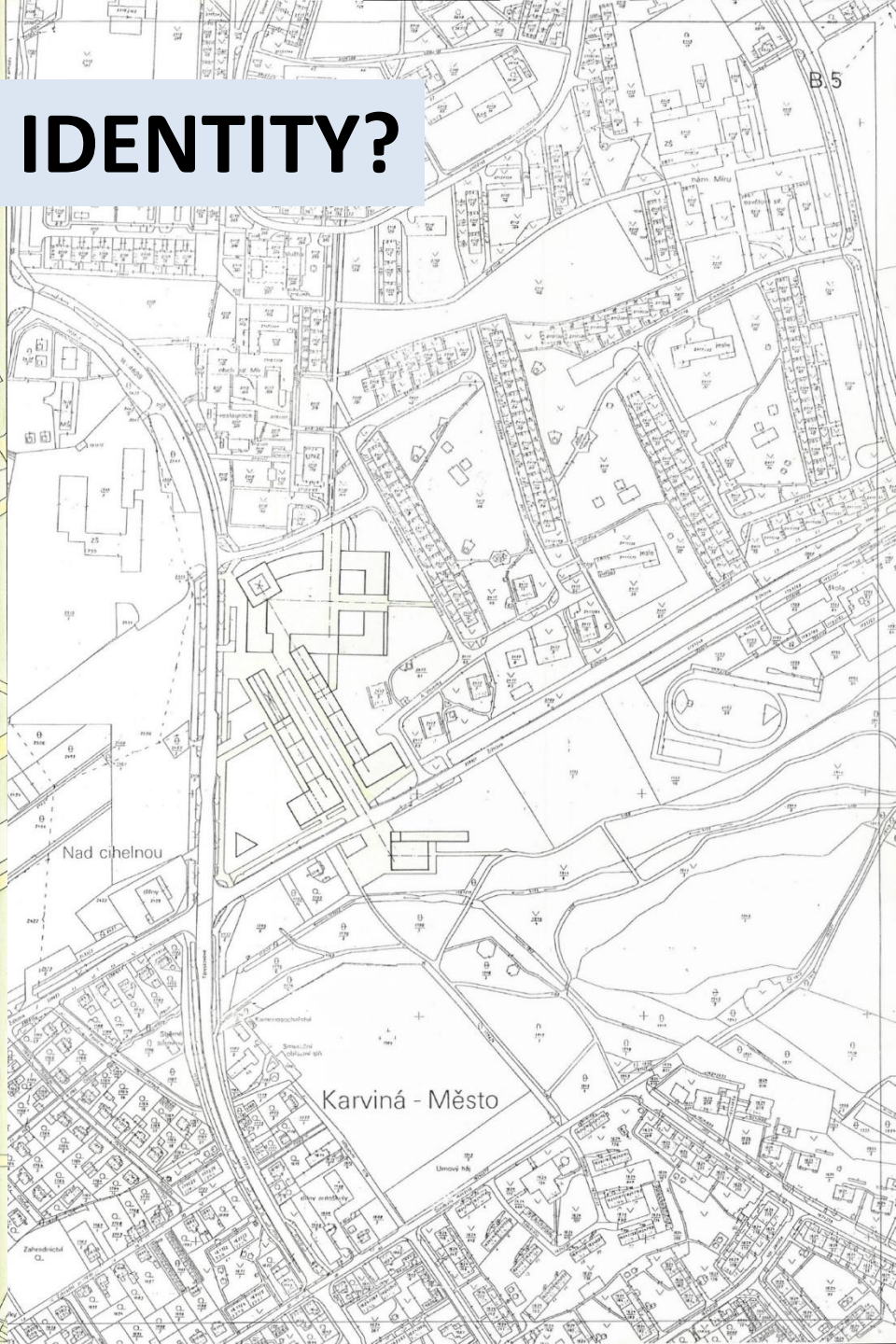
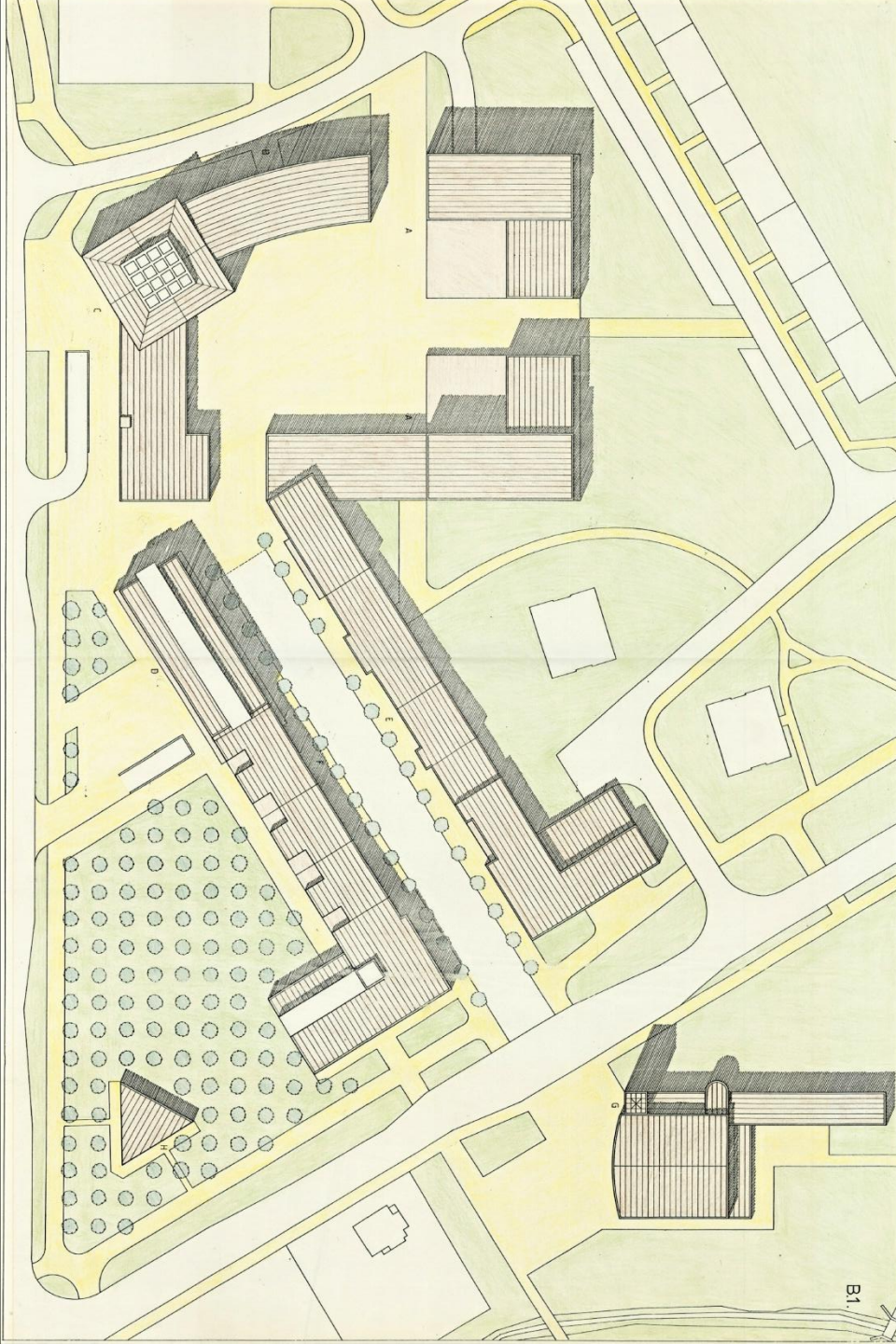
Ing.arch. Zoja Wallerová





1992 1. architectural competition – the „new“ center



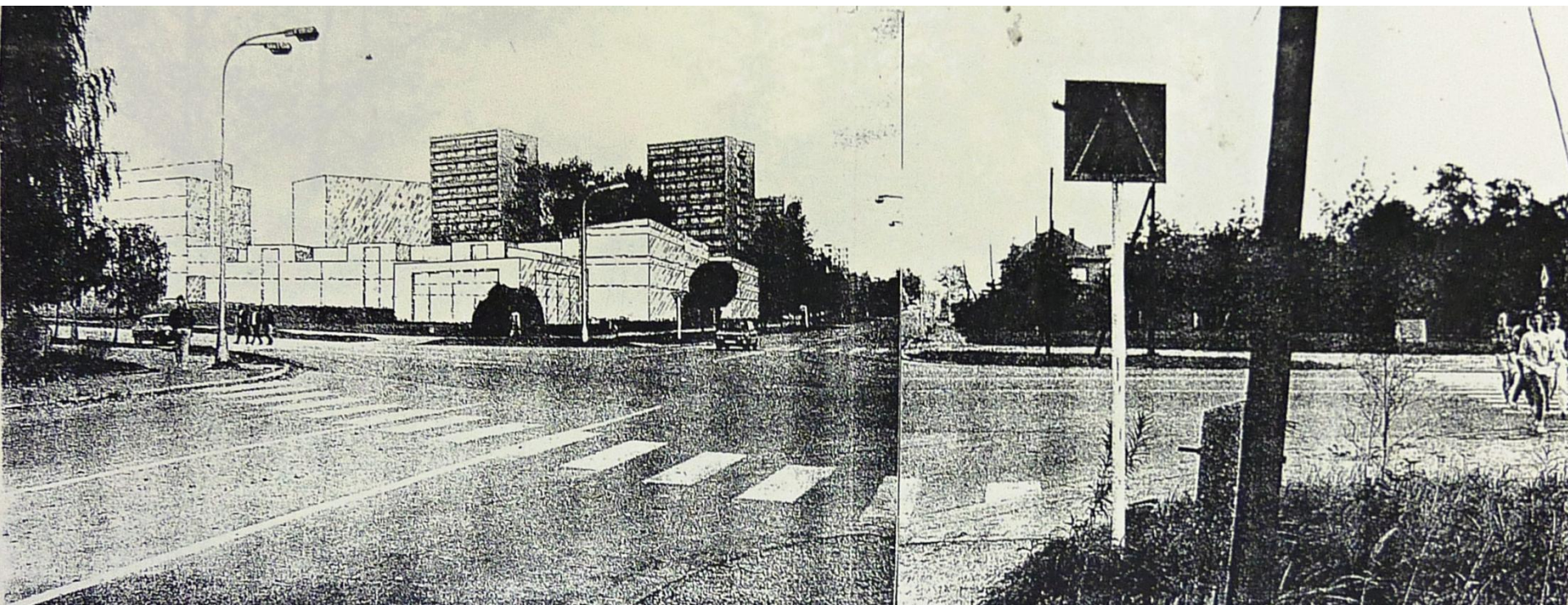
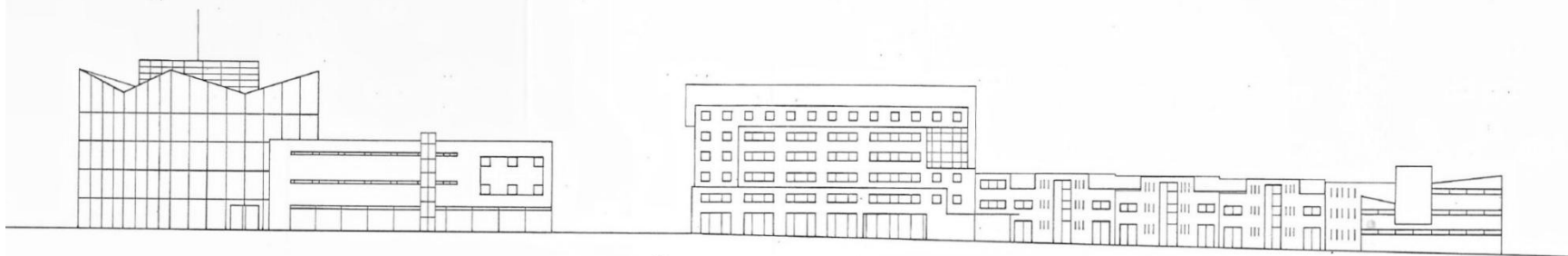


IDENTITY?

B1



POHLED VÝCHODNÍ VNITŘNÍ



1993-1994

2. architectural competition

LEGEN

BLOK A
KOMPLEX ČR
1 - KOSTEL
2 - FARNÍ ÚŘAD
3 - PASTORÁK

BLOK B
KOMPLEX KU
ZÁŘIZENÍ
4 - VÝSTAVNÍ
5 - GALERIE
6 - UNIVERZITA
7 - KULOVNA
8 - RESTAURACE
9 - KAVARNA

BLOK C
KOMPLEX O
10 - OBCHOD
11 - TRŽNICE
12 - PRŮMYSL
13 - NEVYHŘEK
14 - ADMINIST.

BLOK D
CENTRUM W
15 - UNIVERZITA
16 - RESTAURACE
17 - LEVÝTOVNA
18 - FITNESS-CE

BLOK E
BLOK DOPLA
20 - MALOOC
21 - SLUŽBY
22 - KANCELARIE
23 - VEŠKOVNA

BLOK F
KOMPLEX BAN
A ADMINISTRA
24 - BANKA
25 - SPORTELI
26 - GRADY MI
27 - ZÁKONOVNA
28 - MALOOC
29 - BYDLENÍ (

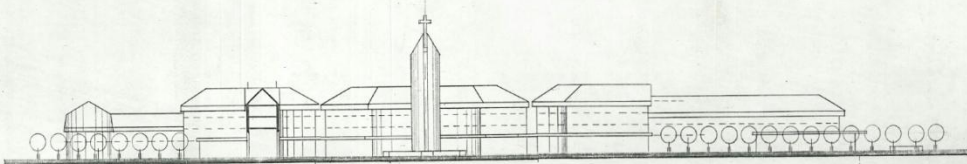
BLOK G
OBCHODNÍ D
30 - OBCHOD
31 - MALOOC
32 - PRŮMYSL
33 - BYDLENÍ (

OSTATNÍ
P - PARKING
PG - PARKOVNA
PR - PŮDLEŽNÍ
N - NÁMESTÍ
F - FONTANA
VD - VÝTVARNÁ
VZ - VEŠKOVNA
BUS - ZASTÁVA

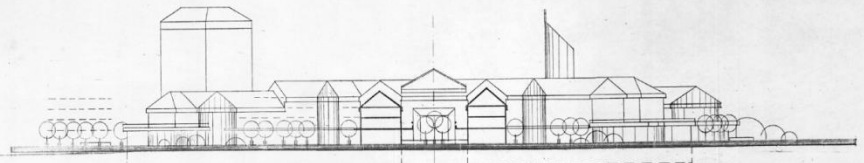
■ STAN
■ NÁM
■ PĚŠ
■ PLOCH
1:3-1:1 POHL
(BUT



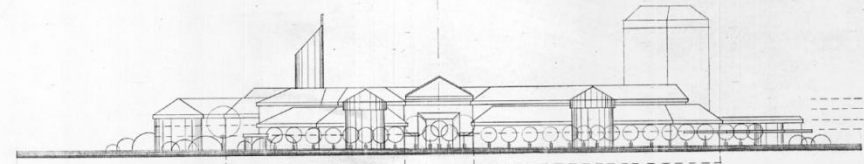
TRANSFORMATION?



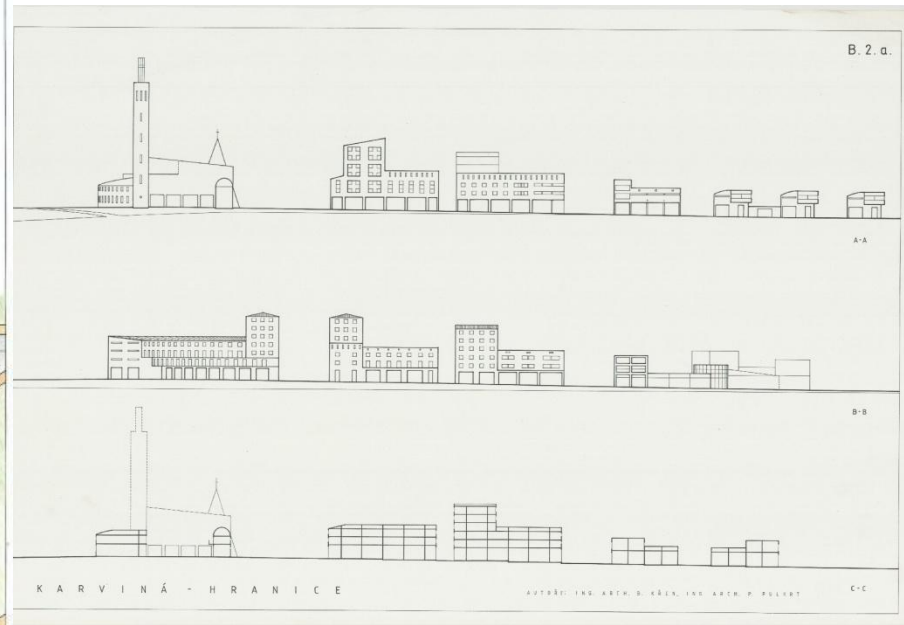
REZOPHLED A - A' 1:500

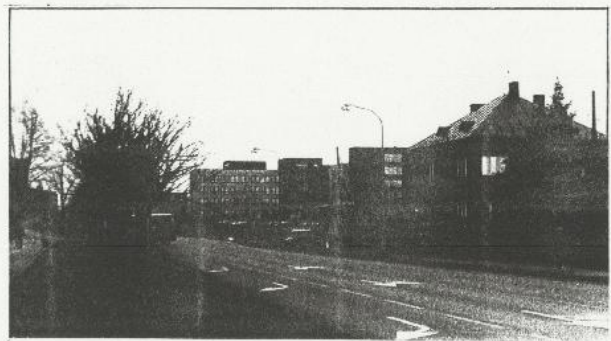
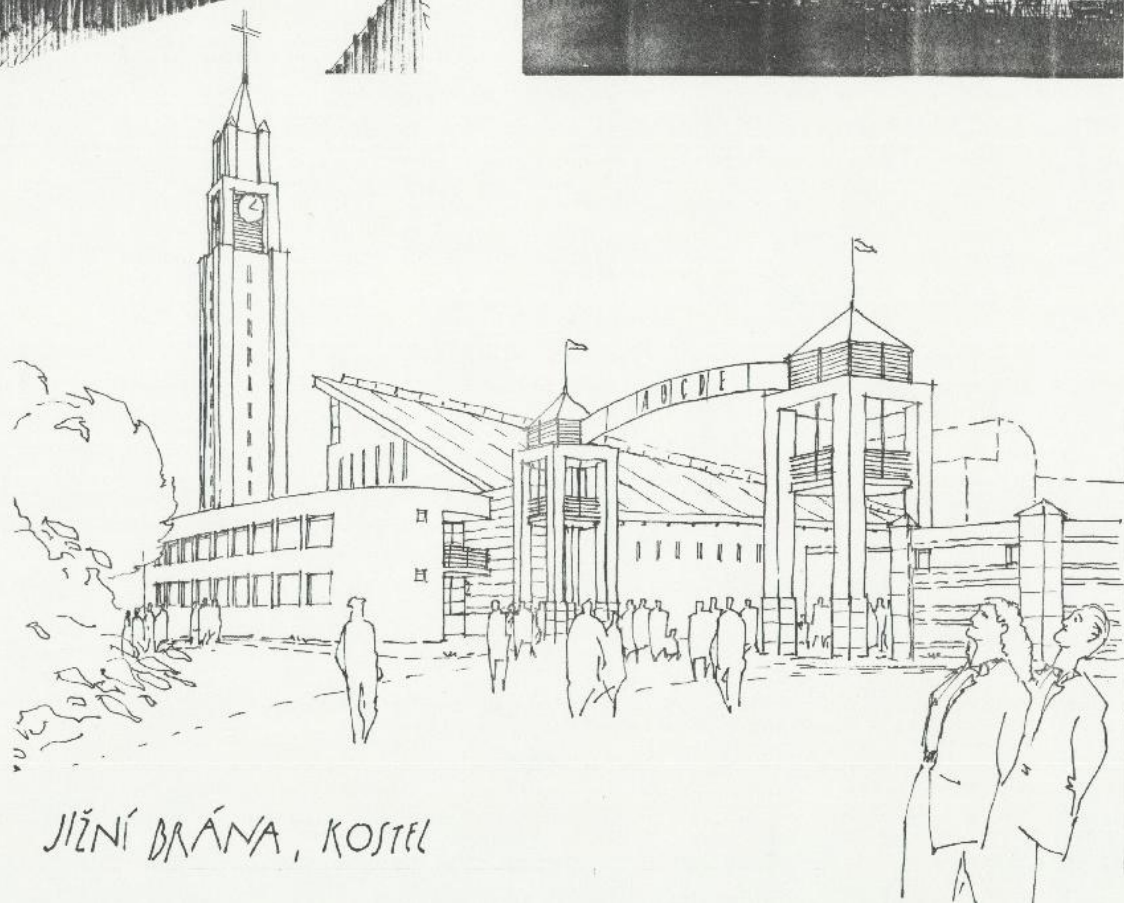
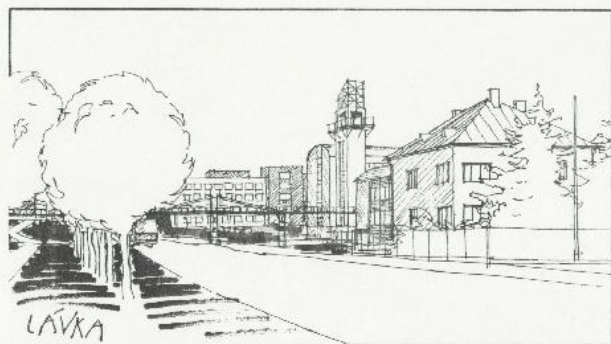
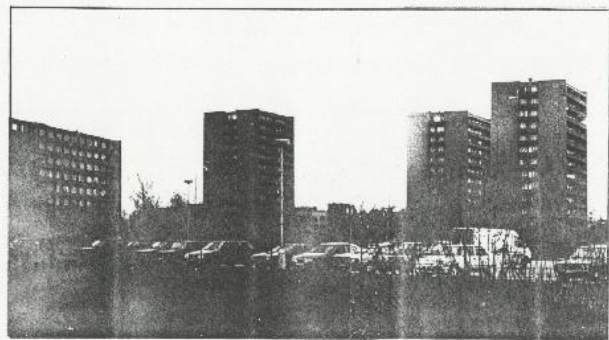
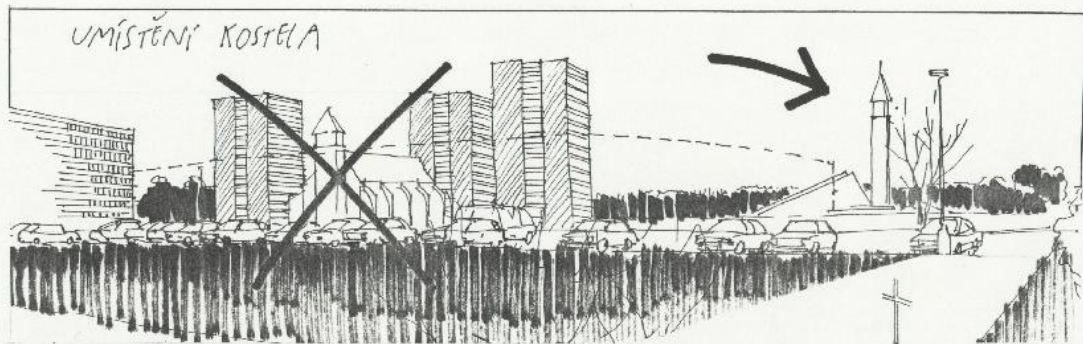


REZOPHLED B - B' 1:500



POHLED JIH 1:500

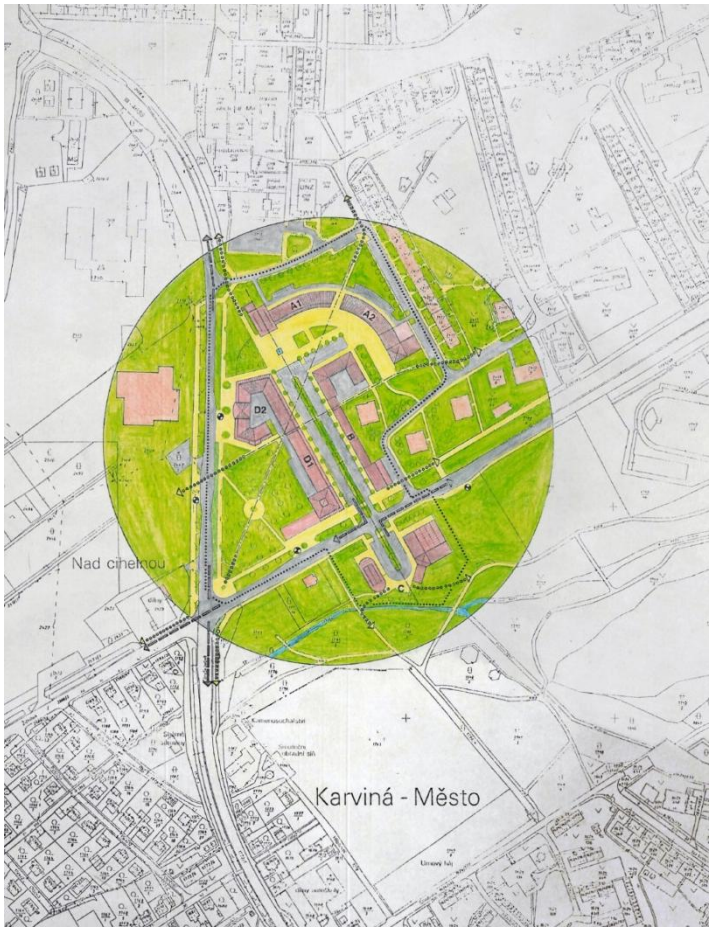




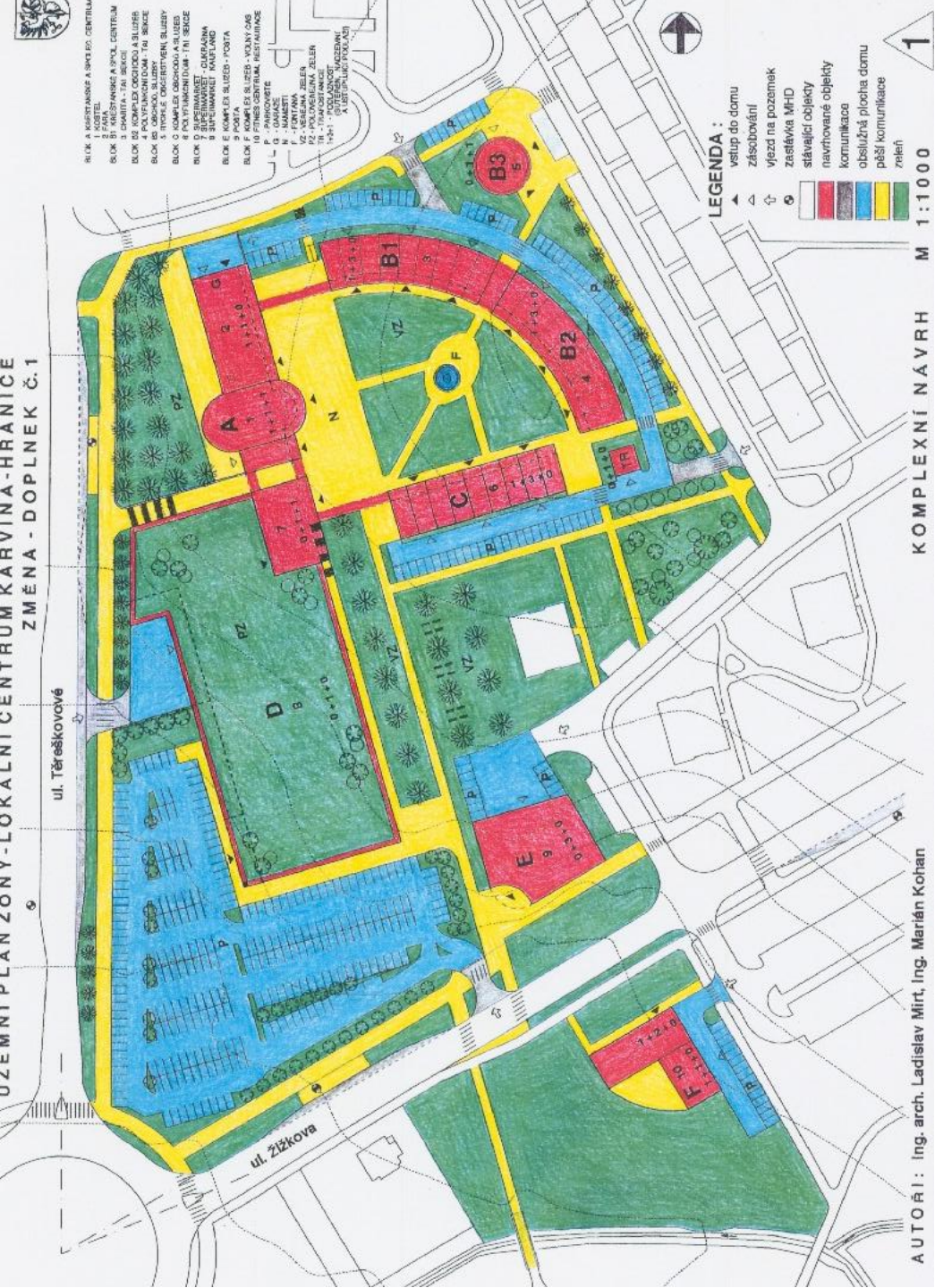


Master plan designed with results of competition

1994

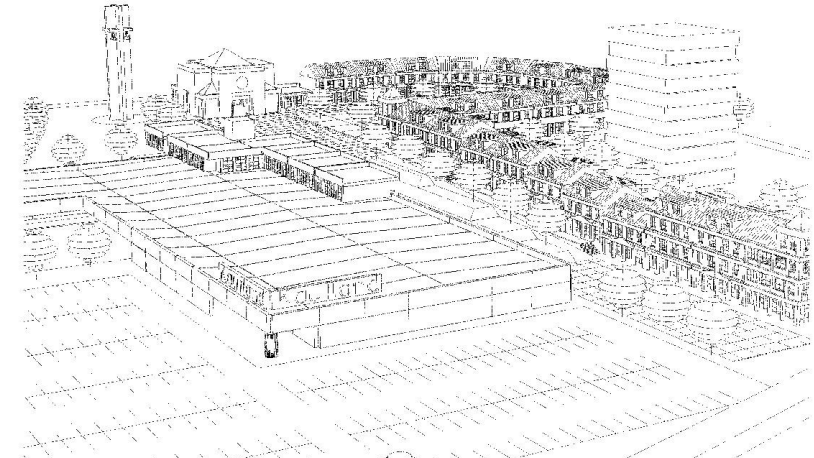
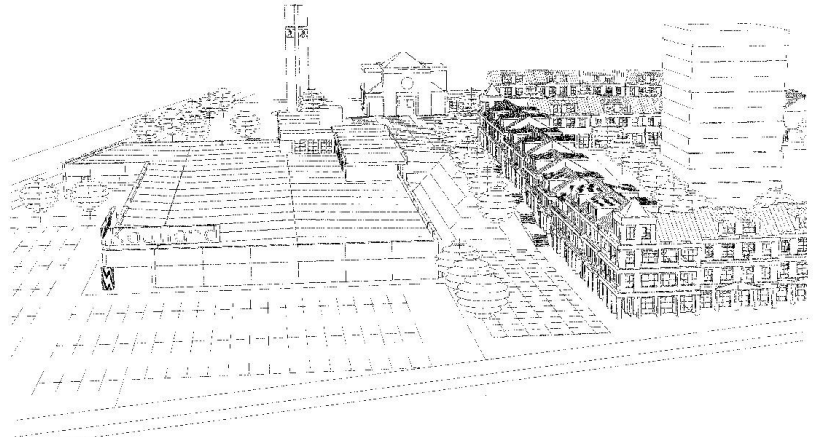


UZEMNÍ PLAN ZONÝ-LOKALNÍ CENTRUM KARVINA-HRANICE
ZMĚNA - DOPLNEK Č.1



Amendment nr.1 SUPERMARKET KAUF LAND

1998



1998

Amendment nr. 1 SUPERMARKET KAUFLAND





TECHNOLOGY?



Ďěkujeme Vám!



2017
Kaufland
Kaufland

podle našeho gusta
20%
levně
134,-

Skvělá kvalita, skvělá cena!
48%
levně
25,90

Skvělá kvalita, skvělá cena!
29%
levně
25,90







P
RÉSERVÉ



EINSTEINOVA

BAR HERNA SMEČ

A large blue sign for 'BAR HERNA SMEČ' featuring images of people playing sports like volleyball and basketball. The sign is divided into sections with the words 'BAR', 'HERNA', and 'SMEČ' in white letters.

STÚROVSKÝ











Thank you for attention.

Ing. arch. Eva Špačková

**Department of Architecture
Faculty of Civil Engineering
VŠB – Technical University of Ostrava**

eva.spackova@vsb.cz