

• Your perfect fit

Brink diagonally detachable towbar



BRiNK®

Your perfect fit
brink.eu



Premium quality

At Brink you can choose from a wide range of towbars. For virtually every type of car we have developed several variants. We have flanged, fixed, detachable and retractable towbars. Although each type of towbar has its own specific characteristics, all are equal in innovation, ease of use and security to ensure premium quality.

Innovation

Maximum towing weight and nose load

The technical specifications of your car determine the maximum (horizontal) towing weight and the maximum permissible vertical load. Brink towbars are designed in such a way that these specifications can be fully utilised.

Stylish design

Our towbars have a stylish design which is complimented by our manufacturing capabilities allowing a bespoke design for each vehicle. Our towbars are tailored to the vehicle aesthetics whilst always respecting the statutory towbar height: measured from the ground 35 to 42 cm at maximum load.

Light weight

Brink towbars are easy to handle. All our towbars and auxiliary parts are made of high strength steel, which makes them extremely lightweight.

Sustainable

Brink towbars guarantee you a sustainable product. We provide all our towbars with a corrosion-resistant protective layer, which prevents rust forming and preserves the paint finish.

Ease of use

Tailor made

Brink towbars are quick and easy to install. All our towbars are car-specific, based on mounting points and loading data provided by the vehicle manufacturers. Therefore, Brink towbars have the right fit and can be easily installed to your vehicle.

Unique integrated eye

With a Brink towbar the breakaway cable is easy to connect. All our towbar solutions come with a unique integrated eye which is located centrally below the bumper line. Although practically invisible, the eye can be easily located and utilised.

Wide turning angle

Brink towbars allow you to take every turn seamlessly. Legally, the distance between the bumper and the centre of the ball has to be at least 54 millimetres. We maintain a greater distance to accommodate the largest AL-KO coupling which allow more articulation and reduce risk of bumper damage.

Safety

Amalgamated norms

A Brink towbar guarantees you optimum safety. All our towbars comply with the international standards (DIN ISO, ECE R55, TÜV GS, City Crash) and those of car manufacturers. In order to offer you additional security, we have further amalgamated these requirements with our own standards.

Extensive testing

At Brink we have an advanced testing centre. Every towbar is subject to quality tests while being exposed to the most extreme conditions. This is done according to the international standards and our own self imposed tests which provide a guarantee for years of carefree and enjoyable use.

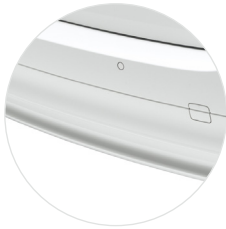
Qualitative assembly

Brink works closely with selected garages, car dealers and fast fitters. These are qualified assembly stations that we check and train periodically. Their technicians meet our high quality standards and you can be assured that your towbar and wiring kit are correctly installed to your vehicle. Brink provides a fiveyear warranty on our towbar and installation if completed by one of our installation partners.

Brink BMA

Diagonally detachable towbar

Are you looking for a detachable towbar that excels in usability? In that case, a diagonally detachable towbar is ideal for you. In no other detachable system the ball can be attached and removed so quickly and with so little effort. Another advantage is that the towball housing is almost invisible after detaching it.



Step 1.



Step 2.



Step 3.

Innovation

With a diagonally detachable towbar no longer is there a permanent fixture behind your car. But within a few seconds a towbar is always available when you need it. The towball housing remains partly visible after removing the ball, therefore it is easy to locate when inserting the ball. With this system you can also store the electrical socket behind the bumper. It simply folds away resulting in an almost invisible solution.

Ease of use

The diagonally detachable towbar is provided with a cover and a plug is used to protect against dirt and grit. This makes the towbar maintenance free. Access to the boot is also an added advantage once the towball has been removed. All our detachable towbars come with a storage bag for the towball, which can be stored in the boot keeping the ball and interior clean.

Simply to operate

When attaching the towball of the diagonally detachable towbar, you simply put the ball in the housing with a diagonal movement. By pushing the ball slightly downwards, the towbar automatically locks itself. Two simple actions are enough to unlock the ball again. By pushing the rotary knob in the direction of the ball and turning it with your thumb in a flowing movement in an upwards position you can unlock the ball. After that it can be stored in the boot. During the job your hands remain clean. There is no tool, lubrication or grease required.

Ergonomic rotary knob

The rotary knob of the diagonally detachable towbar is called SmartTurn™, and has an ergonomic design. It is comfortable to operate because your fingers, hand, wrist and arm have a natural position when handling it. This allows you to create an optimal power transfer with minimal effort when unlocking the towball.

Clear instructions

On the rotary knob, there are two arrows that indicate the two successive operations for this. The usability is further enhanced by the rotation direction of the rotary knob. It has a downward movement, which means that your hand turns away from the bumper of the car when operating the rotary knob.

This way there is more room for your hand between the bumper and the rotary knob when removing the towball.

Safety

The diagonally detachable towbar offers the same safety and strength as a fixed towbar. It can fully utilise the vertical axle load and trailer weight, as indicated by the car manufacturer, just like a fixed towbar. The locking system has been extensively tested for under the most extreme driving conditions. The ball is positioned firmly in the housing and is designed in such a way that the rotation direction is opposite to the driving direction. So even in unusual situations, it is impossible for the towball to become detached prematurely. Additionally, the diagonally detachable towbar is equipped with Safelock™. This system ensures that the ball is always placed in the correct way.

Audible lock

Thanks to the Ergoclick™, an audible click can be heard when locking the ball. This audible confirmation is reassurance that the towbar is properly inserted.

Visible lock

The rotary knob has a built-in colour indication consisting of colour codes. Green is a successful lock. Red means the ball is not engaged correctly and requires reinstallation.

Anti-theft lock™

Our detachable towbars are theft-proof. The ball has an integrated security lock with key which allows the towball to remain attached and free from theft.



Brink Towing Systems
P.O. Box 24, 7950 AA Staphorst, The Netherlands
T +31 (0) 522 469 555
F +31 (0) 522 469 788
info@brink.eu
www.brink.eu



BRiNK®

Your perfect fit
brink.eu