



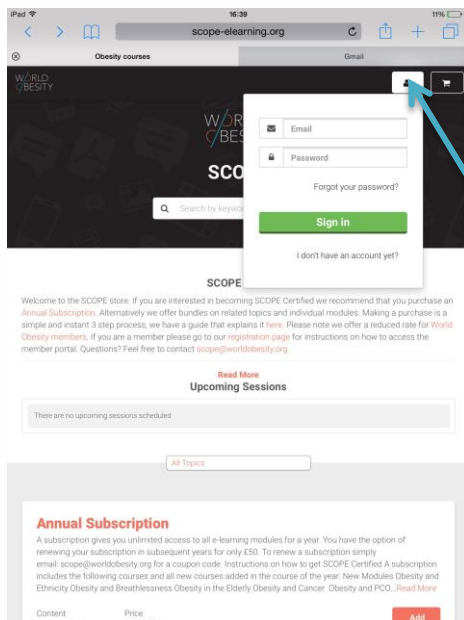
Tablet guide

SCOPE can now be used on your Tablet device.

There are just 3 steps but before proceeding please read our [update](#)

1. Register

Go to: <http://www.scope-elearning.org>

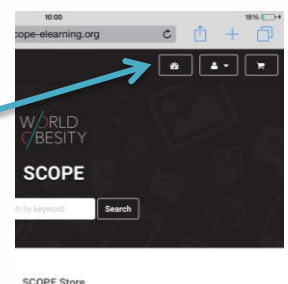


If you're registered simply sign-in by tapping the figure in the top-right corner

If you do not have an account tap I don't have an account yet? This only takes 1 minute.

You'll be taken back to this screen and you'll find a new icon at the top-right.

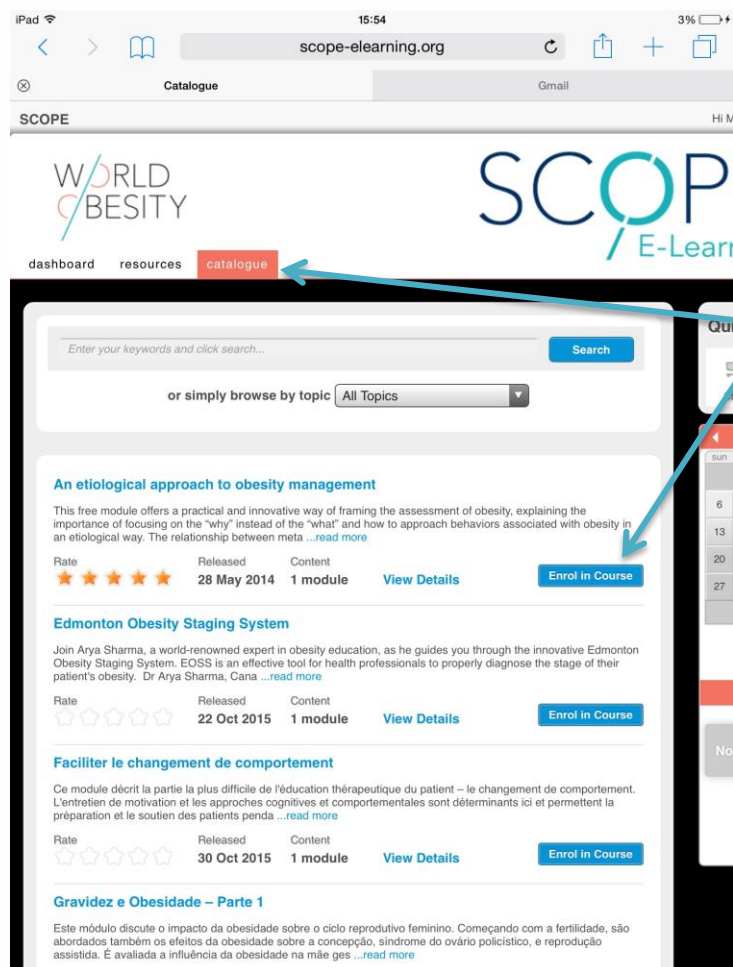
Tap this to go to the main screen.



WORLD OBESITY / CLINICAL CARE

2. Enrol in free module

We offer a free module to all users.



Tap the **catalogue** tab at the top and Enrol in course 'An etiological approach to obesity management'

Promoting excellence globally

WORLD OBESITY / CLINICAL CARE

You will then be re-directed back to the main page. Scroll down and you'll find the module under the headline Courses. Tap **Launch**

16:03
scope-elearning.org

On behalf of the World Obesity Federation, we are delighted to welcome you to SCOPE e-learning. We have brought together a faculty of **internationally recognised experts** in different areas of obesity treatment to develop this course. With SCOPE, you can create a customised learning programme to address your knowledge gaps and areas of interest.

The new dashboard tracks your learning activity, provides World Obesity **resources** and multi-language support. You can also look up our **FAQ** page for answers to common questions. The following introduction is from our Past President and Founder of the International Obesity Task Force (IOTF), Professor Philip James.

Prof Nick Finan, Chair of World Obesity/Clinical Care

We have a total of 35 modules available for purchase in our **store**. You can begin by taking the **free modules** in our catalogue. Once you've accrued 12 SCOPE points you will qualify for SCOPE Certification.

Questions? Use the messages feature on the top-right to get in touch.

Courses

58 Enrolled 20 Completed 78 Total

Enrolled Completed

An etiological approach to obesity management

Enrolled	Last entered	Modules	Progress	Action
17 Mar 2016	-	1	Not Started	View Details Launch

Tap Launch

Promoting excellence globally

3. Download the App

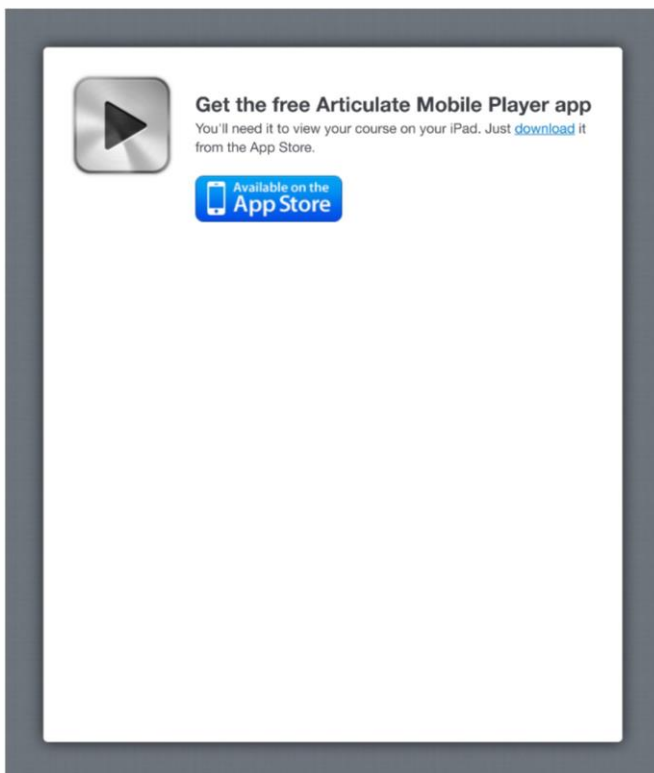
You will be prompted to download the **Articulate** mobile player app. If you do not receive this message search **Articulate mobile player** in your app store or go to:

Apple store:

<https://geo.itunes.apple.com/us/app/articulate-mobile-player/id505546381?mt=8>

Google Play:

<https://play.google.com/store/apps/details?id=air.com.articulate.articulatemobileplayer>



Please download the app. When you have finished downloading the app simply re-open your browser.

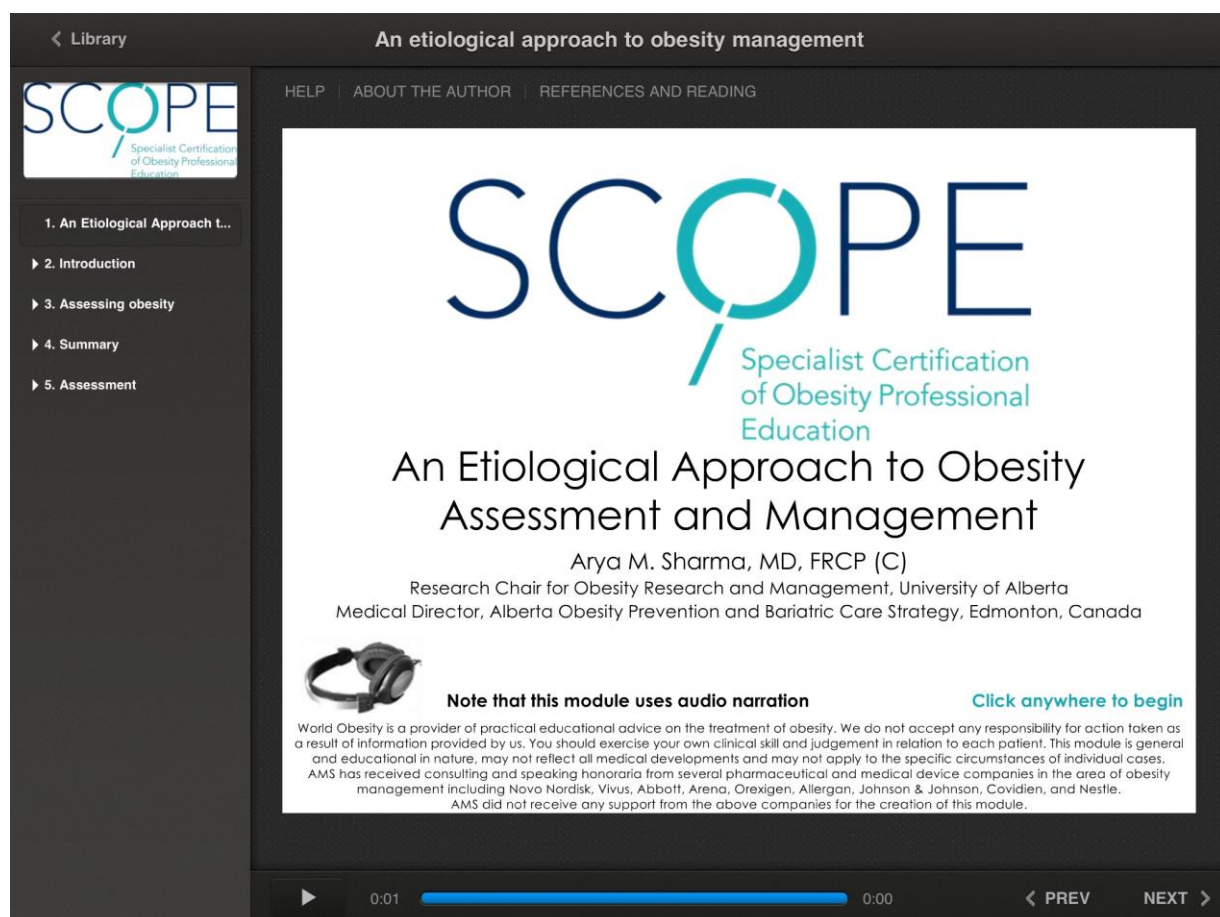
If you are still signed in the module may now automatically open. If not go back to the e-learning <http://www.scope-elearning.org> and sign-in then as before simply launch the module.

WORLD OBESITY / CLINICAL CARE

The App will automatically open the module after you've tapped **Launch**. You may be asked if you'd like to open the module using the **Articulate App** in which case simply tap OK.

Please note that there may be a delay, please wait at least a minute after launching the module to allow the App time to open.

Your screen should look like this:

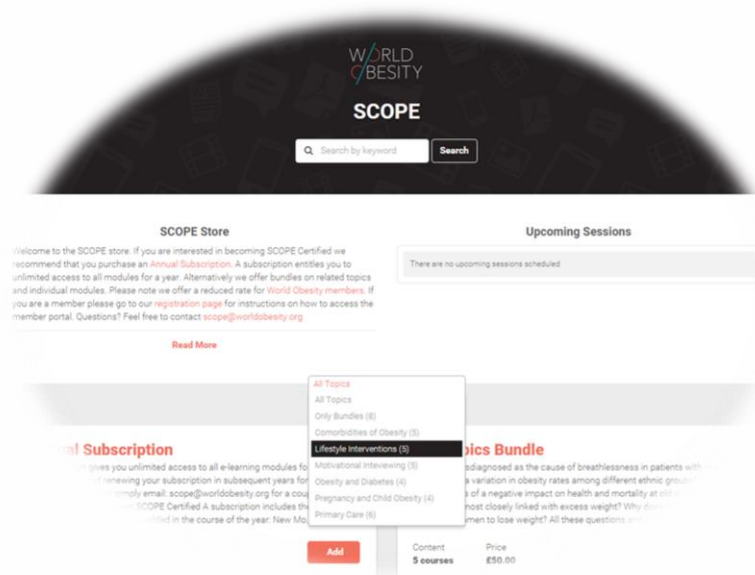


You can navigate by tapping **Next** or using the sidebar to open each section of the module

WORLD OBESITY / CLINICAL CARE

When you are ready to start some of our 35 modules for purchase, you can click the **Store** icon on the top-right of the main screen when you sign-in. For instructions on how to make a purchase in the SCOPE Store use our guide here:

http://www.worldobesity.org/site_media/cms_page_media/355/SCOPE%20Store%20Guide.pdf



Questions? Contact scope@worldobesity.org



UPDATE: There are reported issues with the Safari web browser. If you can't launch modules with Safari please use the free Google Chrome web browser here:

<https://itunes.apple.com/gb/app/chrome-web-browser-by-google/id535886823?mt=8>