

Haus | House 3

# Whg. H3.0.1

APARTMENT H3.0.1



ZIEGERT

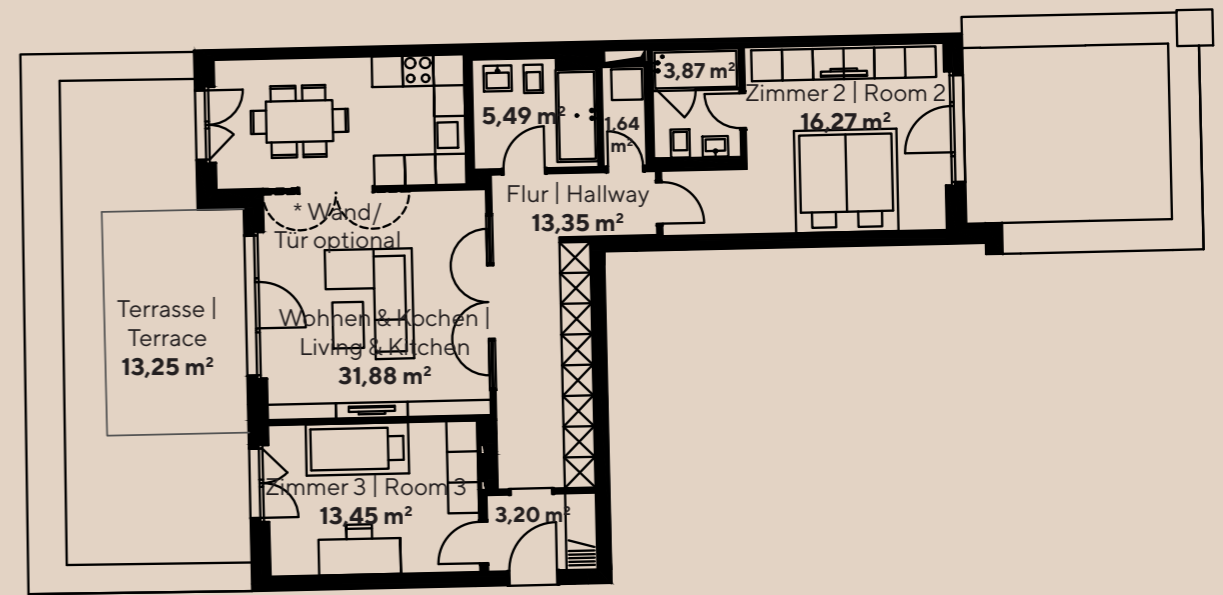
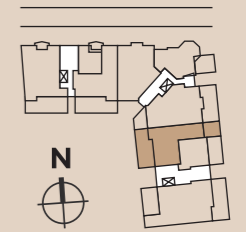
Haus | House 3

WE 3.0.1 | APT. 3.0.1

95,78 m<sup>2</sup>

3-ZIMMER-WOHNUNG | 2-BEDROOM-APARTMENT

Erdgeschoss rechts | Ground floor right



ZIEGERT

Die Balkone/Terrassen/Loggias werden bei einer Fläche zu 25 m<sup>2</sup> zu 50 % und die Fläche darüber zu 25 % in die Wohnfläche eingerechnet. | Balconies, loggias and terraces are included in the living areas at 50% up to 25sqm and at 25% above that.