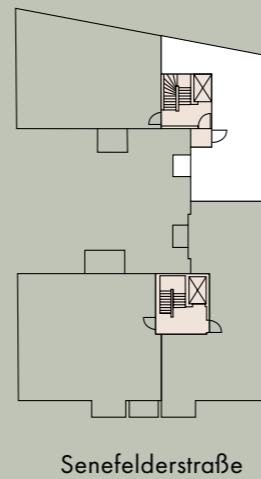


YARD RESIDENCE
WOHNUNG 14
TREPPENHAUS HOF
3. OG LINKS
3 ZIMMER | 81,65 m²

| | | |
|-------------------------|---------------------|----------------------------|
| Wohnküche | kitchen living room | 31,79 m ² |
| Zimmer 1 | bedroom 1 | 14,94 m ² |
| Zimmer 2 | bedroom 2 | 14,69 m ² |
| Bad | bathroom | 5,06 m ² |
| Flur | hallway | 9,77 m ² |
| HWR | laundry storage | 3,72 m ² |
| Balkon* | balcony* | 3,35 m ² |
| Gesamtwohnfläche | Total Area | 81,65 m² |

*Die Balkone und Loggien sind zu 50 % und alle Terrassen sowie Privatgärten sind zu 25 % in die Wohnfläche eingerechnet.

*The balconies and loggias are factored into the floor area at a ratio of 50% and the terraces and privat gardens at a ratio of 25 %.



Yard Staircase

APT. 14

81,65 m²

2-bedroom Apartment

Senefelderstraße 21 | Yard Residence | 3rd floor left

