

Haus | House 2

Whg. H2.4.2

APARTMENT H2.4.2



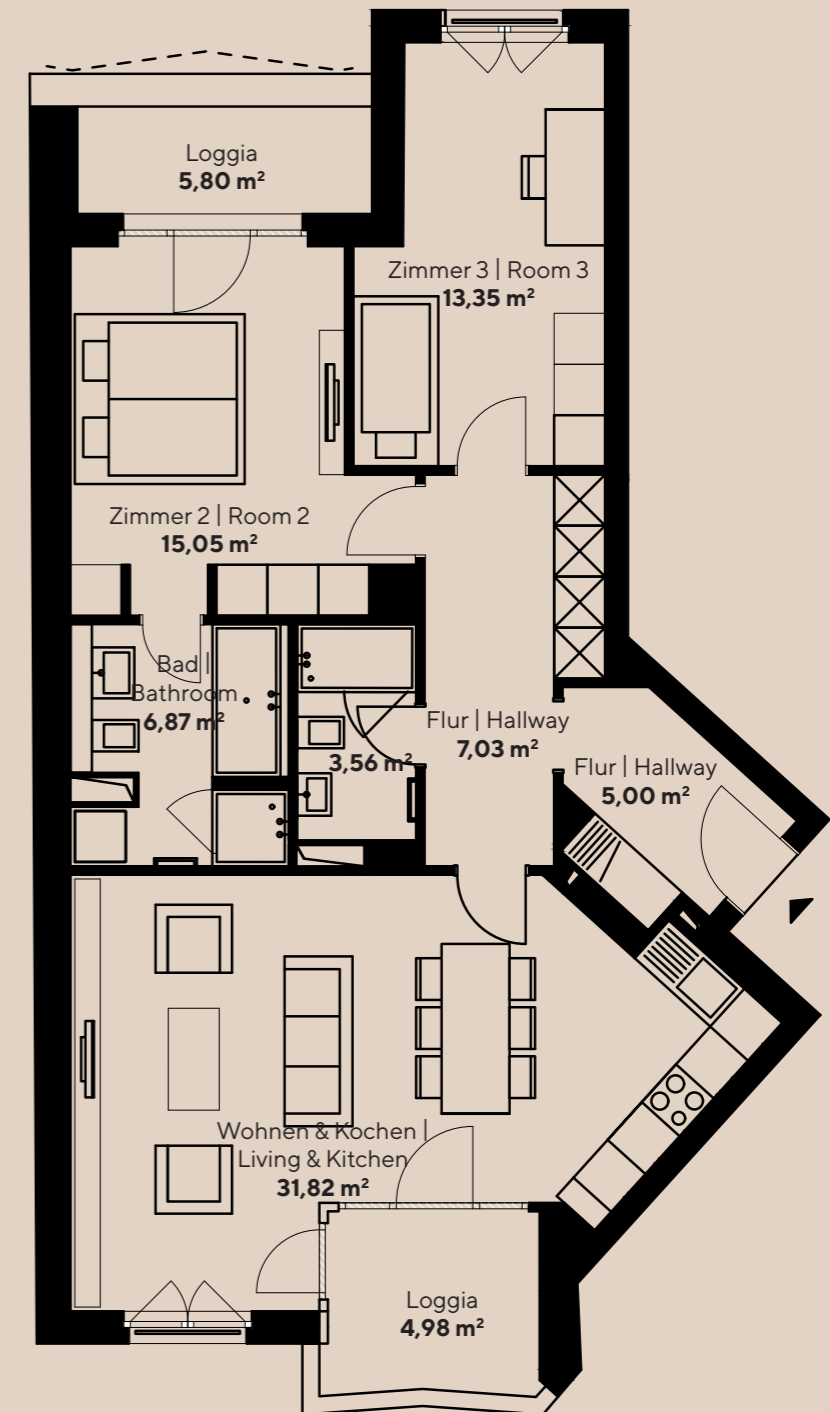
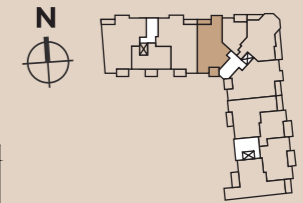
Haus | House 2

WE 2.4.2 | APT. 2.4.2

88,07 m²

3-ZIMMER-WOHNUNG | 2-BEDROOM-APARTMENT

4. Obergeschoss links | 4th floor left



Die Balkone/Terrassen/Loggias werden bei einer Fläche zu 25 m² zu 50 % und die Fläche darüber zu 25 % in die Wohnfläche eingerechnet. |
Balconies, loggias and terraces are included in the living areas at 50% up to 25sqm and at 25% above that.