

Haus | House 3

Whg. H3.0.2

APARTMENT H3.0.2



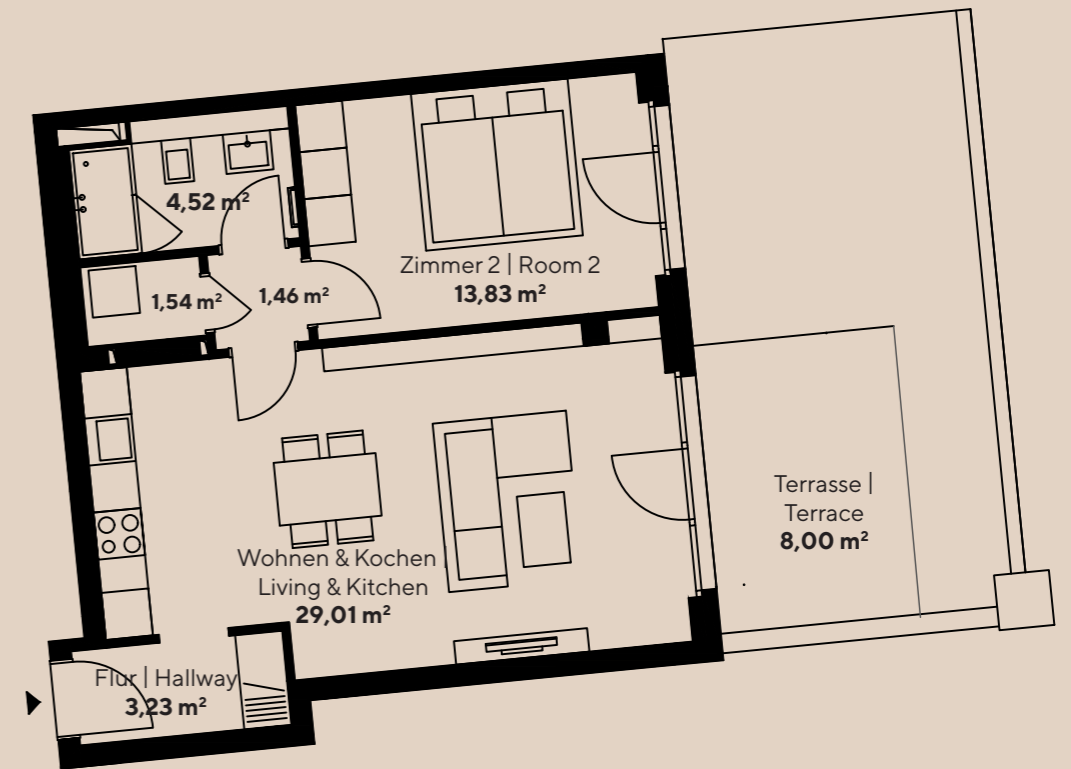
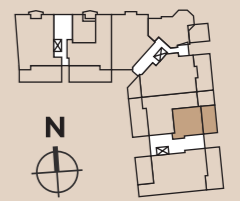
Haus | House 3

WE 3.0.2 | APT. 3.0.2

57,59 m²

2-ZIMMER-WOHNUNG | 1-BEDROOM-APARTMENT

Erdgeschoss rechts vorne | Ground floor right front



Die Balkone/Terrassen/Loggias werden bei einer Fläche zu 25 m² zu 50 % und die Fläche darüber zu 25 % in die Wohnfläche eingerechnet. | Balconies, loggias and terraces are included in the living areas at 50% up to 25sqm and at 25% above that.