

# FRONT RESIDENCE

## WOHNUNG 17

### TREPPENHAUS FRONT

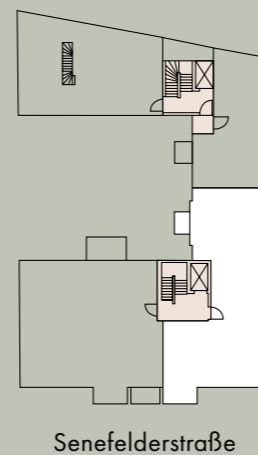
#### 4. OG LINKS | BARRIEREFREI

#### 4 ZIMMER | 127,44 m<sup>2</sup>

Wohnküche	kitchen living room	43,09 m <sup>2</sup>
Zimmer 1	bedroom 1	16,57 m <sup>2</sup>
Zimmer 2	bedroom 2	11,05 m <sup>2</sup>
Zimmer 3	bedroom 3	21,54 m <sup>2</sup>
Bad 1	bathroom 1	6,86 m <sup>2</sup>
Bad 2	bathroom 2	6,45 m <sup>2</sup>
Flur	hallway	15,57 m <sup>2</sup>
HWR	laundry   storage	2,59 m <sup>2</sup>
AR	storage	2,03 m <sup>2</sup>
Balkon*	balcony*	3,35 m <sup>2</sup>
<b>Gesamtwohnfläche</b>	<b>Total Area</b>	<b>127,44 m<sup>2</sup></b>

\*Die Balkone und Loggien sind zu 50 % und alle Terrassen sowie Privatgärten sind zu 25 % in die Wohnfläche eingerechnet.

\*The balconies and loggias are factored into the floor area at a ratio of 50% and the terraces and privat gardens at a ratio of 25 %.



Front Staircase

APT. 17

127,44 m<sup>2</sup>

3-bedroom Apartment | barrier free

Senefelderstraße 21 | Front Residence | 4th floor left

