

Haus | House 2

Whg. H2.0.1

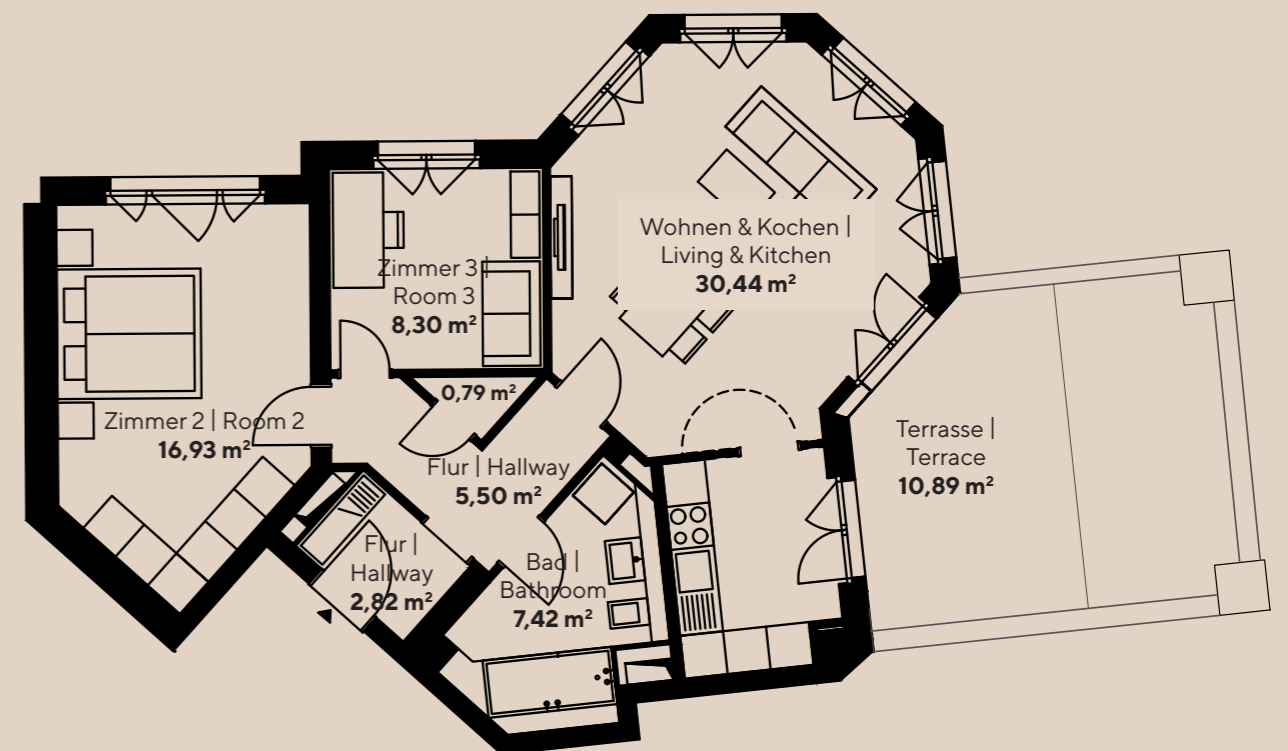
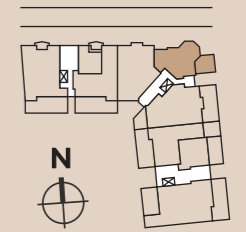
APARTMENT H2.0.1



Haus | House 2 WE 2.0.1 | APT. 2.0.1 77,65 m²

3-ZIMMER-WOHNUNG | 2-BEDROOM-APARTMENT

Erdgeschoss rechts | Ground floor right



Die Balkone/Terrassen/Loggias werden bei einer Fläche zu 25 m² zu 50 % und die Fläche darüber zu 25 % in die Wohnfläche eingerechnet. |
Balconies, loggias and terraces are included in the living areas at 50% up to 25sqm and at 25% above that.