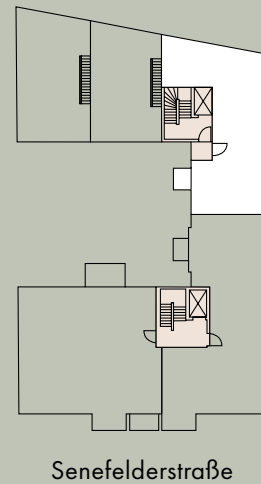


**YARD RESIDENCE**  
**WOHNUNG 10**  
**TREPPENHAUS HOF**  
**2. OG LINKS**  
**3 ZIMMER | 89,03 m<sup>2</sup>**

|                         |                     |                           |
|-------------------------|---------------------|---------------------------|
| Wohnküche               | kitchen living room | 31,79 m <sup>2</sup>      |
| Zimmer 1                | bedroom 1           | 18,11 m <sup>2</sup>      |
| Zimmer 2                | bedroom 2           | 17,23 m <sup>2</sup>      |
| Bad                     | bathroom            | 5,30 m <sup>2</sup>       |
| Flur                    | hallway             | 9,98 m <sup>2</sup>       |
| HWR                     | laundry   storage   | 3,71 m <sup>2</sup>       |
| Balkon*                 | balcony*            | 3,35 m <sup>2</sup>       |
| Terrasse*               | terrace*            | 4,96 m <sup>2</sup>       |
| <b>Gesamtwohnfläche</b> | <b>Total Area</b>   | <b>89,03m<sup>2</sup></b> |

\*Die Balkone und Loggien sind zu 50 % und alle Terrassen sowie Privatgärten sind zu 25 % in die Wohnfläche eingerechnet.

\*The balconies and loggias are factored into the floor area at a ratio of 50% and the terraces and privat gardens at a ratio of 25 %.



Senefelderstraße

Yard Staircase

APT. 10

89,03 m<sup>2</sup>

**2-bedroom Apartment**

Senefelderstraße 21 | Yard Residence | 2nd floor left

