

WE 19

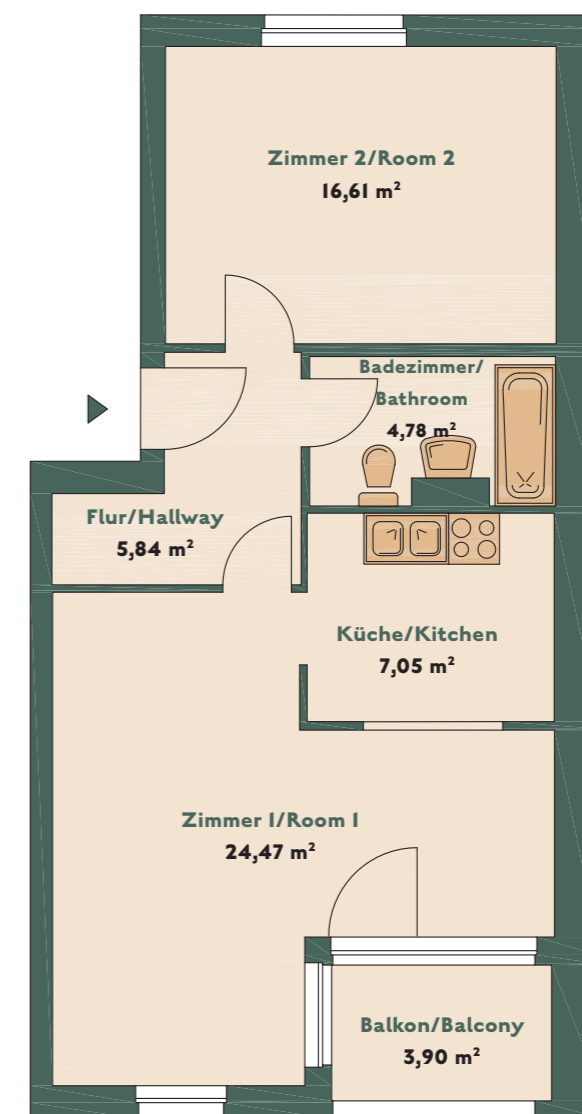
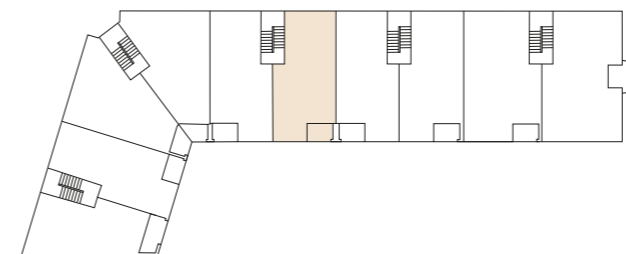
DONAUSTRASSE 70
12043 BERLIN



2-Zimmer-Wohnung

I-BEDROOM-APARTMENT

I. OG LINKS / 1ST FLOOR LEFT, CA. 60,70 m²



Die Balkone/Terrassen/Loggias werden zu 50 % in die Wohnfläche eingerechnet.
Balconies/terraces/loggias are calculated at 50%.