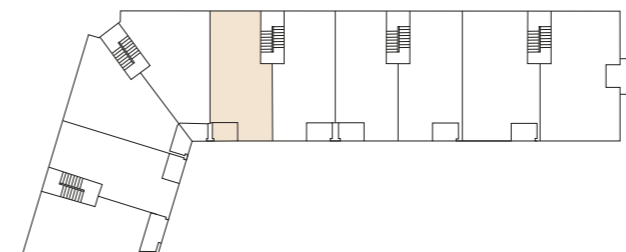


# 2-Zimmer-Wohnung

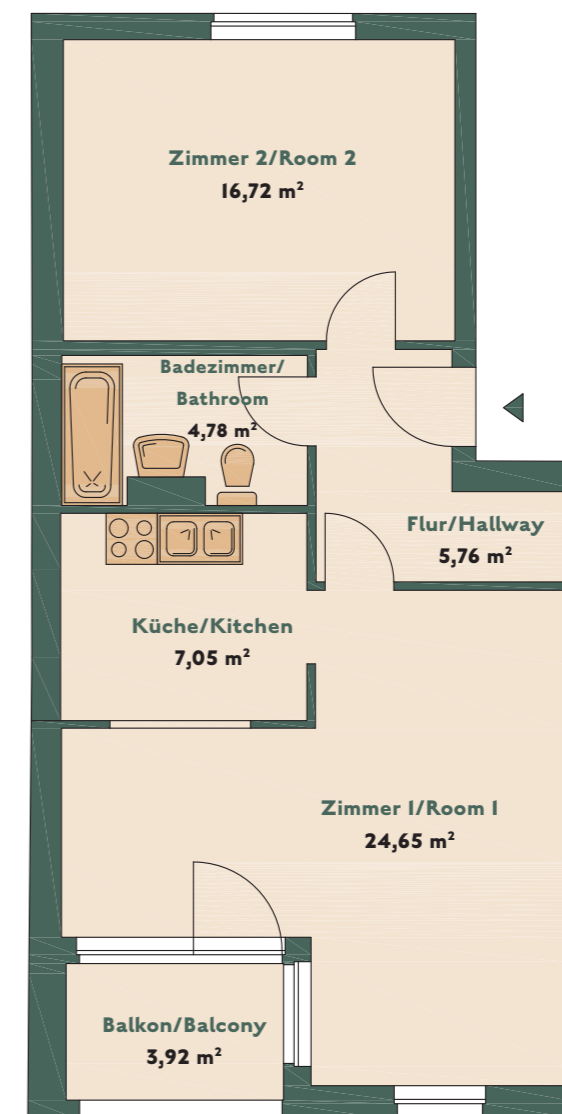
I-BEDROOM-APARTMENT

I.OG RECHTS / 1<sup>ST</sup> FLOOR RIGHT, CA. 60,92 m<sup>2</sup>



## WE 20

DONAUSTRASSE 70  
12043 BERLIN



Die Balkone/Terrassen/Loggias werden zu 50 % in die Wohnfläche eingerechnet.  
Balconies/terraces/loggias are calculated at 50%.