

Haus | House 2

# Whg. H2.0.2

APARTMENT H2.0.2



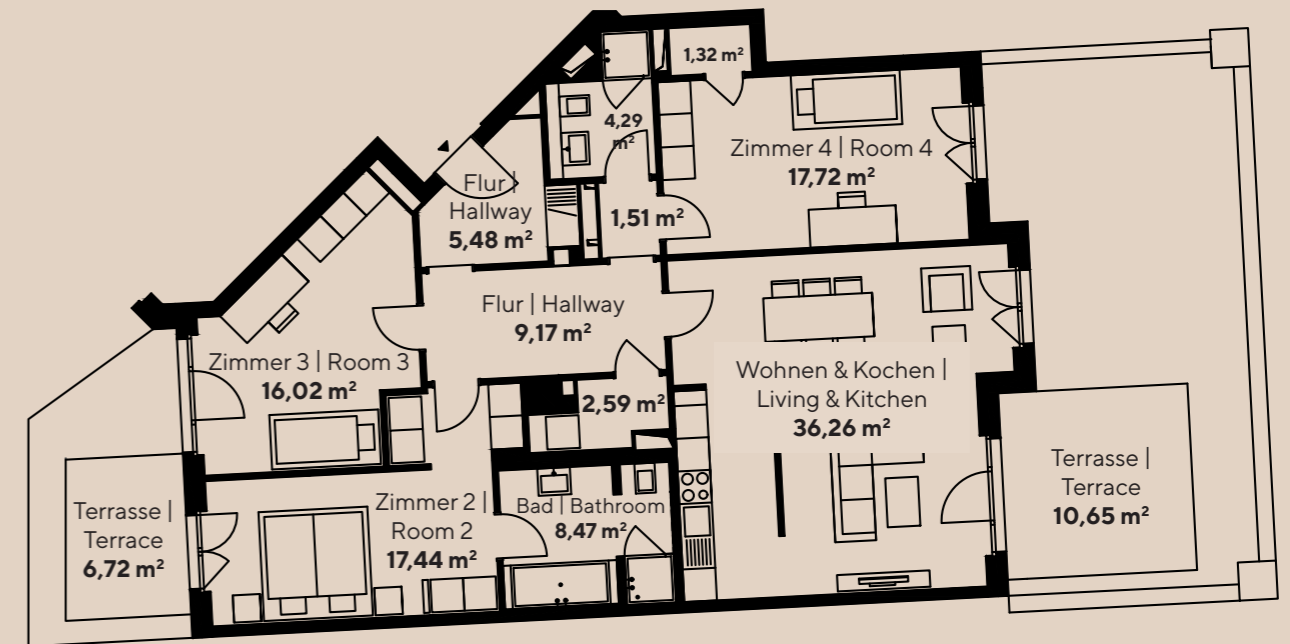
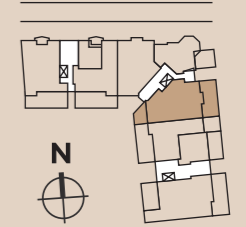
Haus | House 2

WE 2.0.2 | APT. 2.0.2

128,96 m<sup>2</sup>

4-ZIMMER-WOHNUNG | 3-BEDROOM-APARTMENT

Erdgeschoss links | Ground floor left



Die Balkone/Terrassen/Loggias werden bei einer Fläche zu 25 m<sup>2</sup> zu 50 % und die Fläche darüber zu 25 % in die Wohnfläche eingerechnet. |  
Balconies, loggias and terraces are included in the living areas at 50% up to 25sqm and at 25% above that.