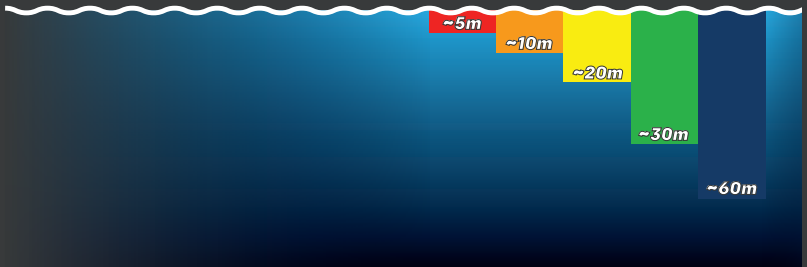


# PARALENZ<sup>®</sup> DIVE CAMERA

## DCC<sup>™</sup> (DEPTH COLOR CORRECTION)

One of the biggest obstacles in filming under water is that the water absorbs sunlight and color. This loss happens both vertically and horizontally, so the deeper you go, or the further you are from what you are filming, the less color and contrast you get. The effect can be seen in this illustration.



*Here you see at which depth the different colors gets absorbed – red is the first color to disappear.*

### WHAT IS DCC<sup>™</sup>

DCC stands for Depth Color Correction and is an intelligent version of a color filter, which are normally made from plastic and placed in front of your camera lens, to remove the green or blue taint in your videos.

DCC<sup>™</sup> is controlled by the pressure sensor. Every second it adjusts the strength of the color correction to match the depth you are at. It can not add colors that are not present, but it can make better use of the colors that are present.

## HOW TO USE DCC™

When using DCC™ instead of a plastic color filter, the footage will have better colors and be sharper and brighter.





*Video recorded with DCC off (WB 5000K)*



*Video recorded with DCC on*

DCC™ has two settings – blue or green.

- Use blue for  blue water
- Use green for  green water



*Use blue for blue water*



*Use green for green water*

## HOW TO ACTIVATE DCC™

Toggle DCC™ on/off by clicking three times on the activation switch while in power- or video-mode. Choose blue or green in DCC settings.



**IMPORTANT:** Do not use dive lights together with the DCC™ – this will discolor the image.