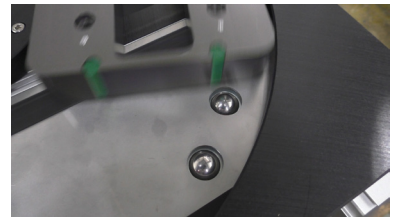
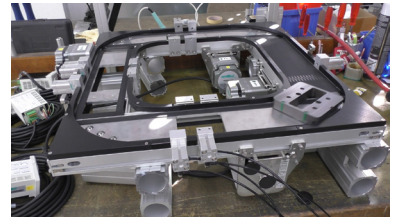
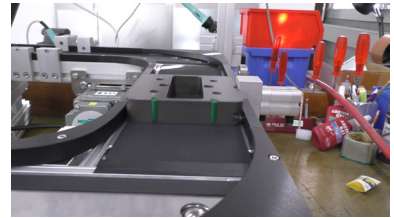
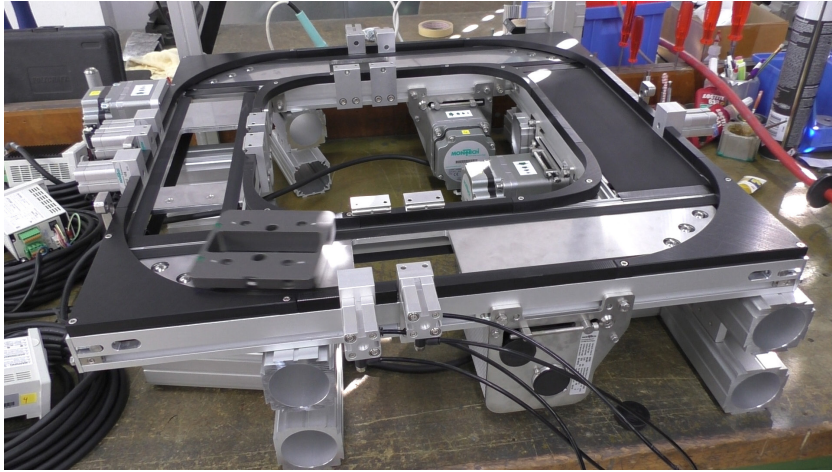


## TRANSFER SYSTEM WITH SINGLE AND DOUBLE BELT CONVEYORS



Type	TB30-D-140
Drive	Brushless DC motor
Conveyor belt width	5.51 in (140 mm)
Size of workpiece carrier	4.52 x 4.52 in (115 x 115 mm)
Takt time per workpiece carrier	1.5 seconds
Max. Transport weight	7.27 lb (3.3 kg)
Speed	$v = 1.64 - 62.66 \text{ ft/min}$ ( $v = 0.5 - 19.1 \text{ m/min}$ )
Belt type endless	ENI-5EE, antistatic

## INDUSTRY

Automotive, medical, electronics

## SPECIAL FEATURES

- Arrangement of single and double belt conveyors
- Height-adjustable ball castors in the chassis

## PROJECT DESCRIPTION

An arrangement of single and double belt conveyors is generally not permitted. For this reason, ball rollers are installed in the double belt conveyors in the transfer system. The height-adjustable ball rollers in the 90° curves prevent the workpiece carrier from tilting when changing from the single to the double belt conveyor. A collision with the double belt is thus impossible.



Montech Conveyors Corp.  
Daetwyler Plaza  
13420 Reese Blvd West  
Huntersville, NC 28078, USA  
Phone +1 704 659 2187  
info.us@montech.com