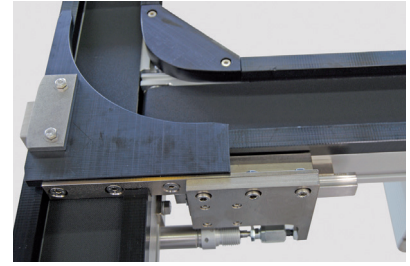
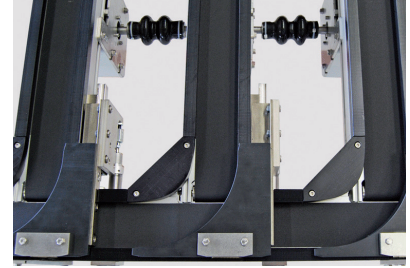


## TRANSFER SYSTEM WITH THREEFOLD BYPASS



### TECHNICAL DATA

Type of conveyor	LTE transfer system with TB-80 conveyor
Drive	Prepared for vertical drive
Conveyor width	3.14 in (80 mm)
Usable conveyor width	Transfer plate 1.96 x 1.96 in (50 x 50 mm)
Conveyor ends	Nose bar Ø 0.78 in (20 mm)
Max. transport weight	44 lb (20 kg)
Speeds	17.4, 21.7 and 33.5 ft/min (5.3, 6.6 and 10.2 m/min)

### SPECIAL FEATURES

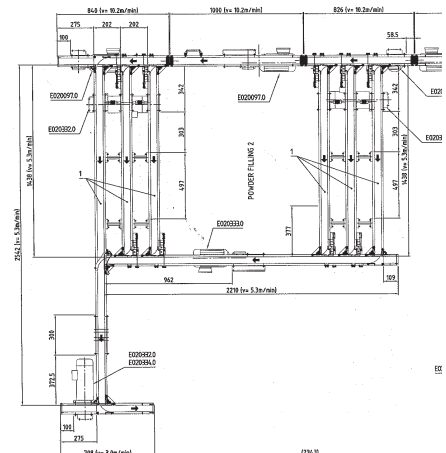
- three parallel belts with only one drive
- three transport speeds

### PROJECT DESCRIPTION

The LTE transfer system receives transfer plates from one conveyor, distributes them among three parallel conveyors, and then merges them onto another single conveyor. The three parallel conveyors have only one motor. The system can transport parts at speeds of 17.4, 21.7 and 33.5 ft/min.

### INDUSTRY

Electronics



Montech Conveyors Corp  
Daetwyler Plaza  
13420 Reese Blvd West  
Huntersville, NC 28078, USA  
Phone +1 704 659 2187  
info.us@montech.com