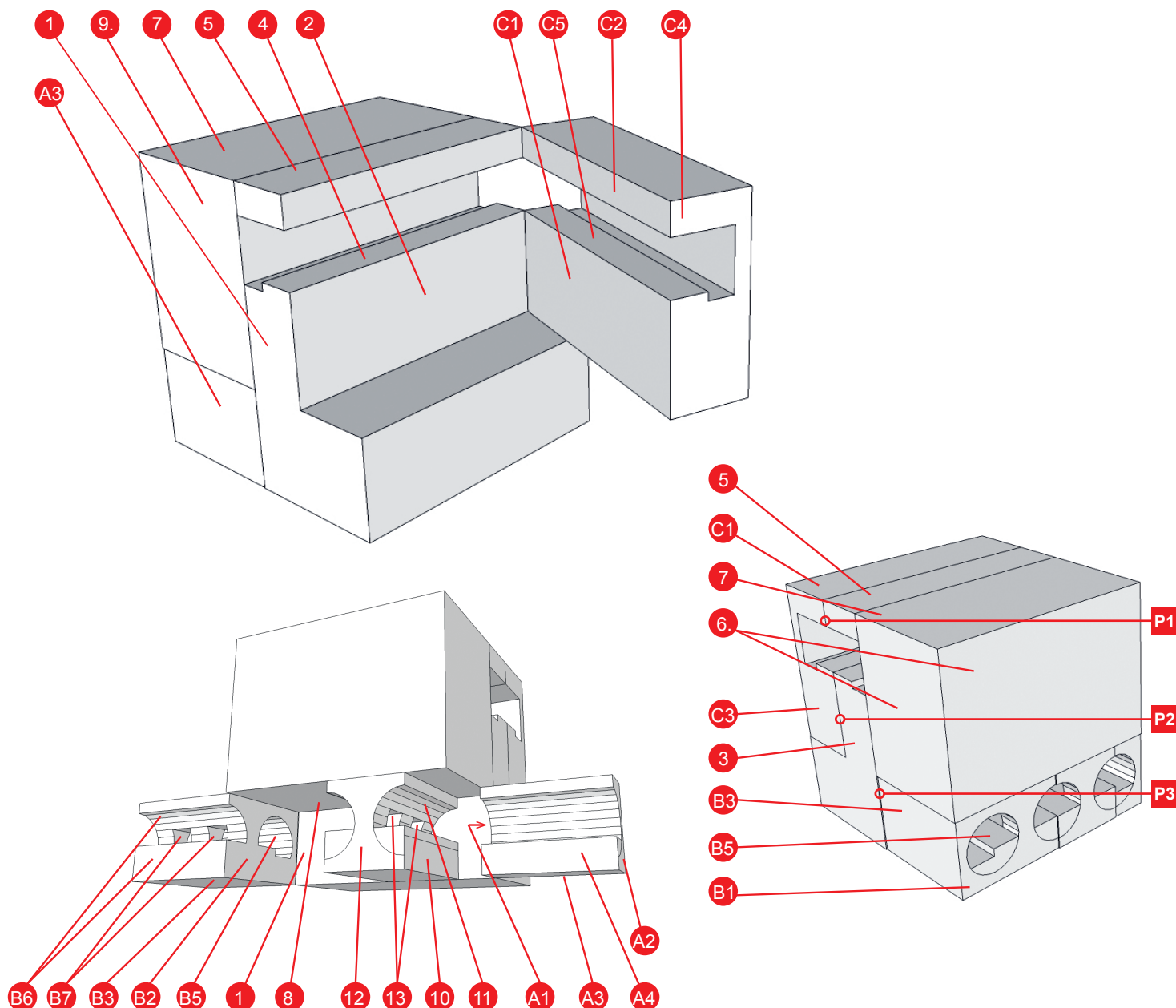




Build with us! Muzeum Station

Stylised cross-section of the metro station





Instructions

1 Start building the structure by assembling the basic block – pieces 1, 2 and 3. Then prepare the ceiling of the C line metro station – piece 5 – and fit it precisely onto piece 1. Close the basic body of the model by gluing in the platform and track part – piece 4.

2 Assemble the simple cube of the rear section – pieces 6, 7, 8 and 9. Glue in the building of the National Museum – part M. Then glue the whole rear block onto the marked place on piece 1.

3 Now prepare the non-moving part A of

the station A, which the platform base – piece 10, the rear façade – piece 12, and the tunnel tube section with passages – parts 11 and 13. Now set aside this entire section for the time being until both moving parts are finished.

4 Now prepare the first tube with the track – parts A1, A2, A3 and A4. Start with the inner arch, then glue on the outer shell. Carefully retouch completed block.

5 Move on to the second movable block – the platform section. First prepare both tubes B5, B6 with B7 passages. Place

parts B1 and B2 on this assembled section and enclose the entire block with the outer shell – parts B3 and B4. Again retouch the completed block.

6 Now assemble the whole tunnel complex, the central block consisting of the pieces 10–13 and the two fold-out blocks, and fit them to the base of the model. Glue the properly fitted parts of the middle non-moving block (10–13) to piece 1 and piece 8.

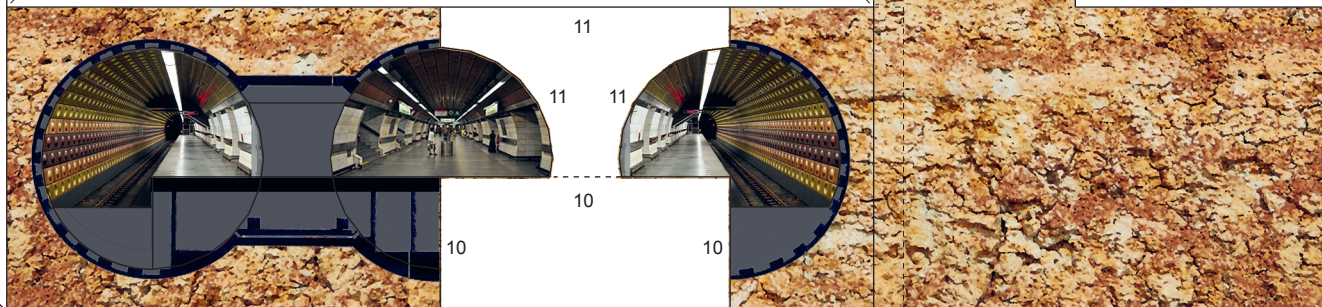
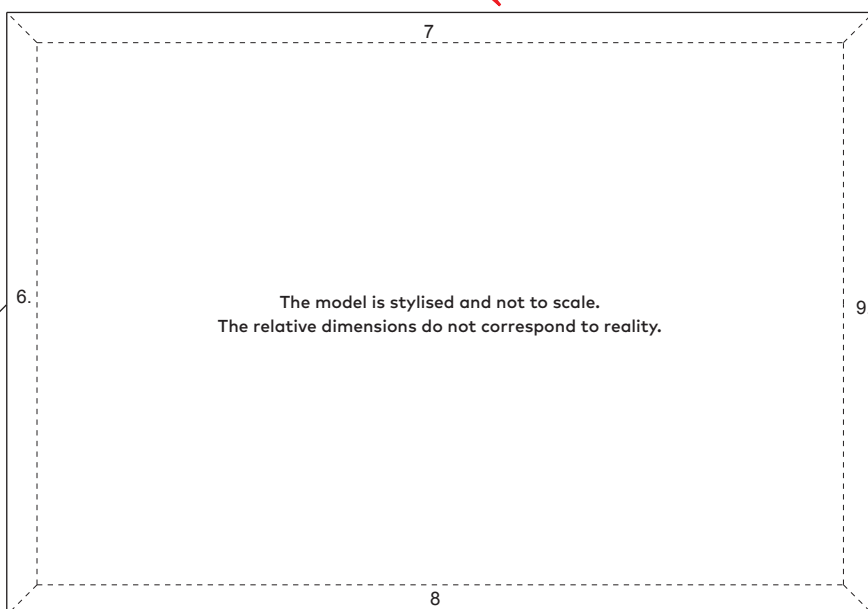
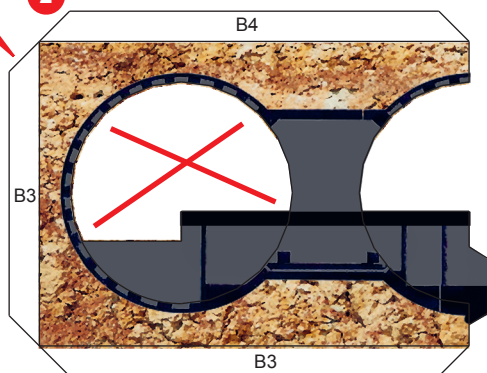
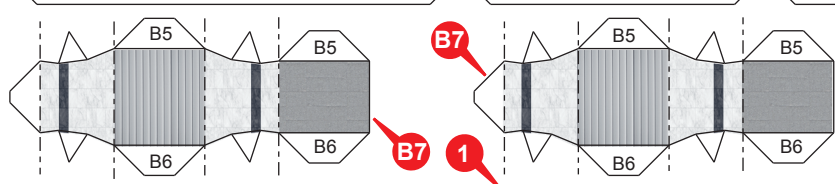
7 The last movable part is the fold-out platform of metro line C, formed by parts C1–C5. Starting with the inner section, parts C2

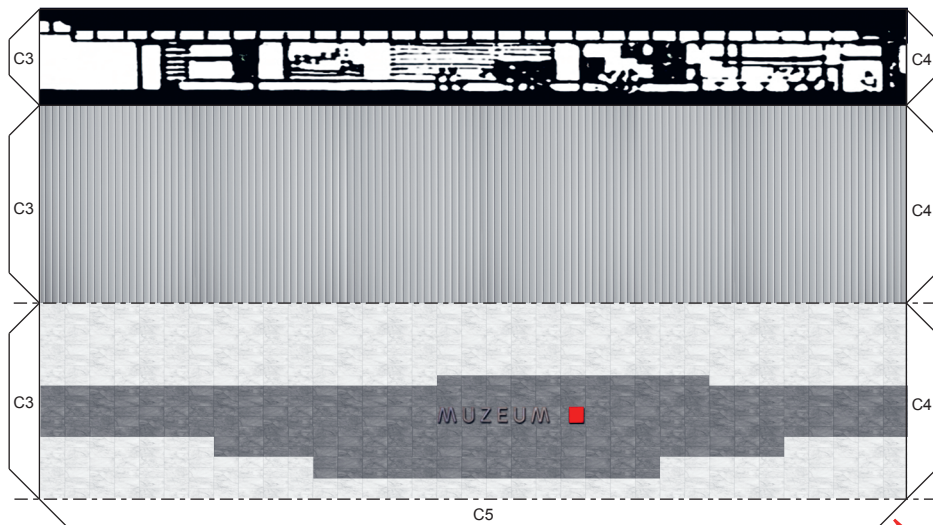
and C5, which are fitted to the fronts of C3 and C4. Now glue on the outer shell with parts C1 and C2. Carefully retouch the entire section.

8 Now all you have to do is attach the moving parts with hinges P1–P3.

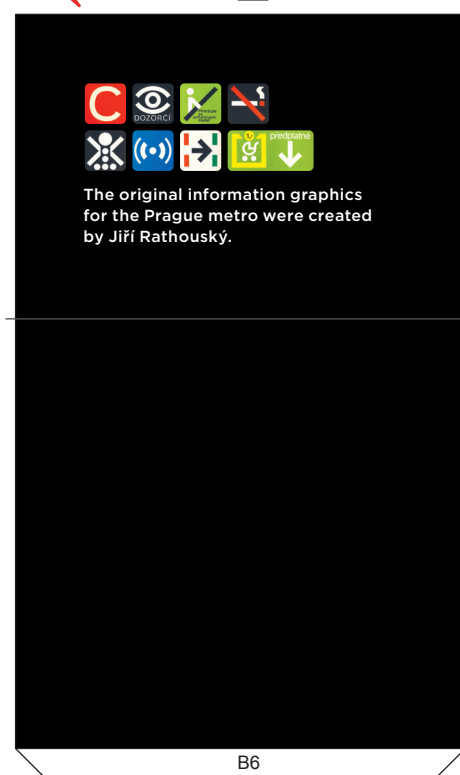
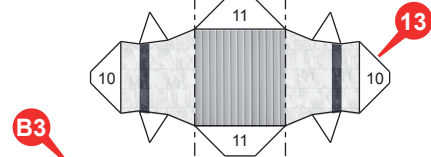
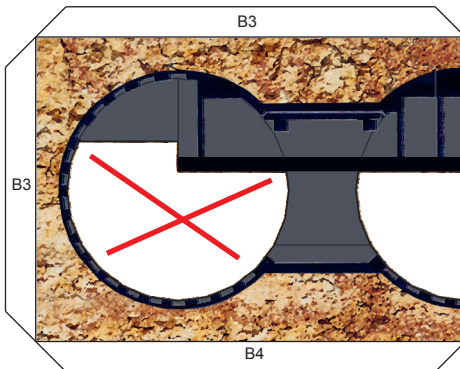
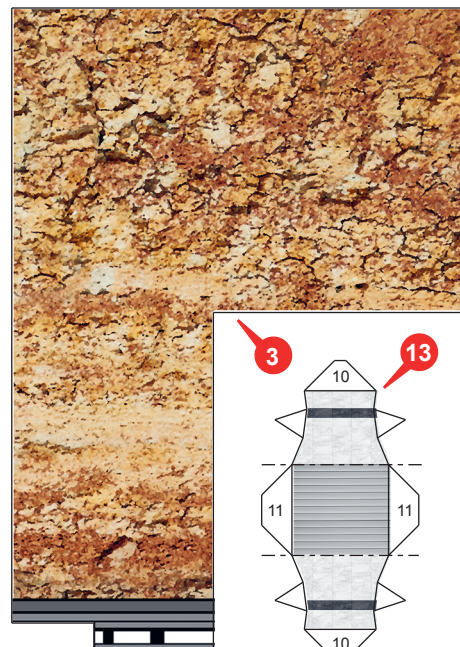
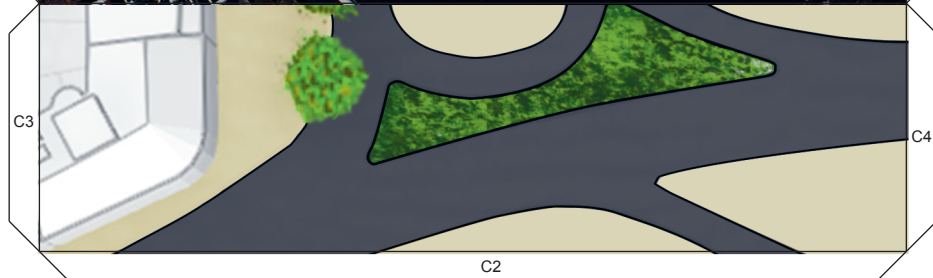
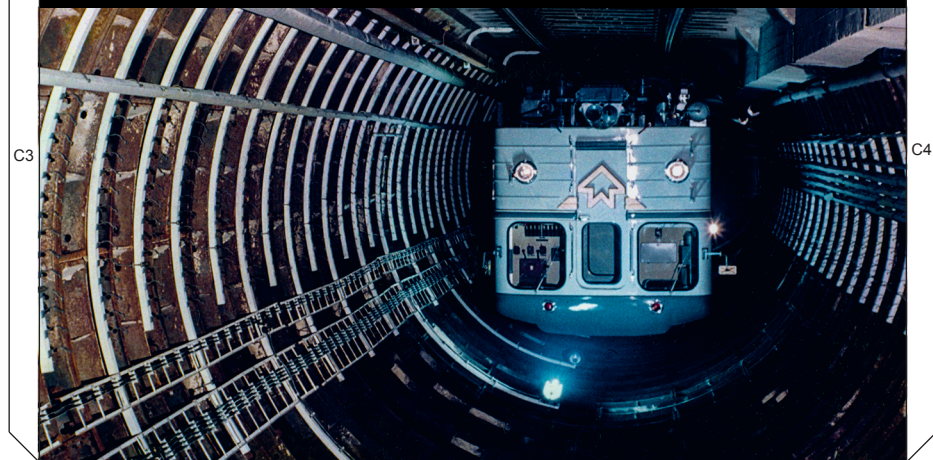
9 The last, relatively easy part is to assemble the 3 original underground train carriages.

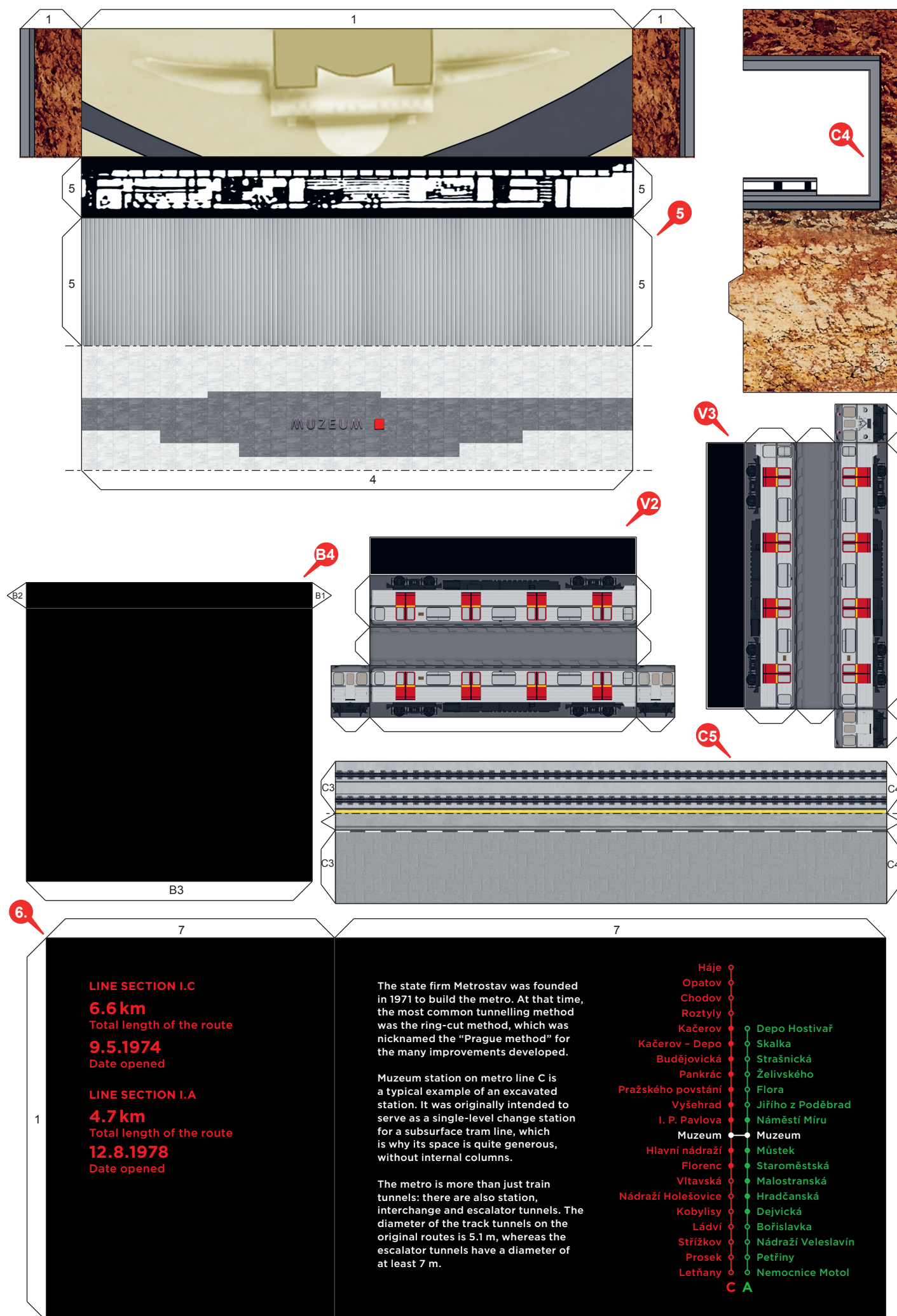
10 The model is now finished, all that's left to do is smooth the inaccuracies of the construction with water colours in the appropriate shades.

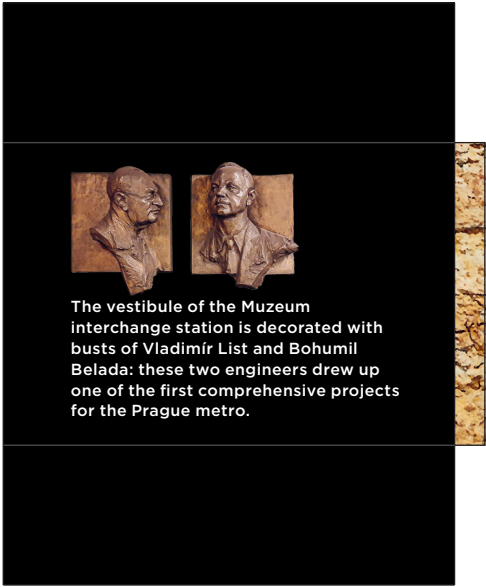




Museum station

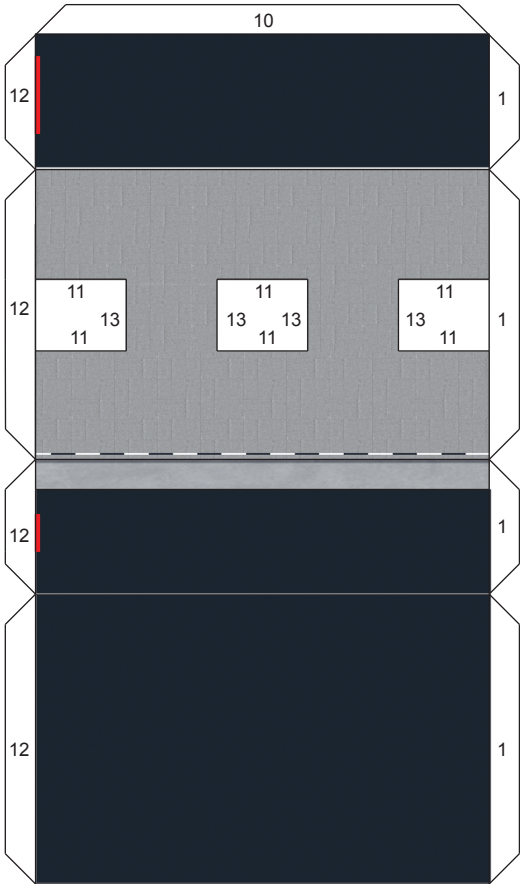
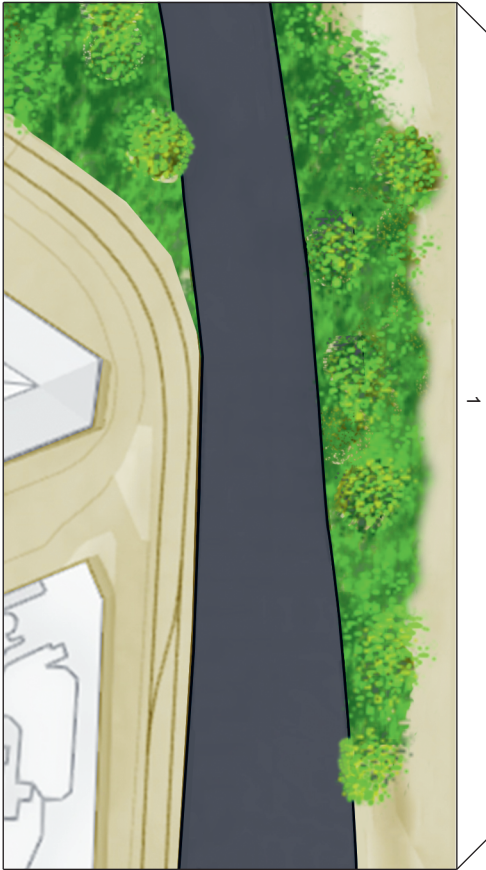




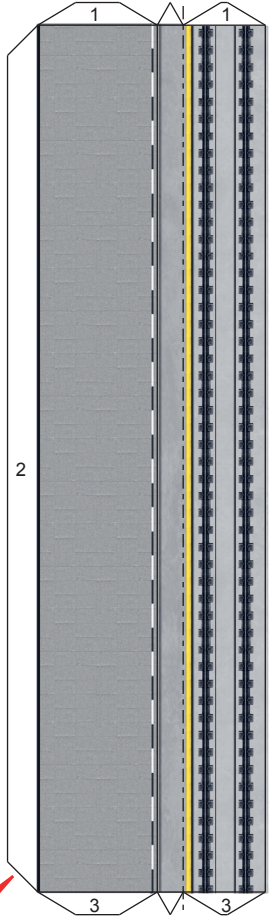


7

A3

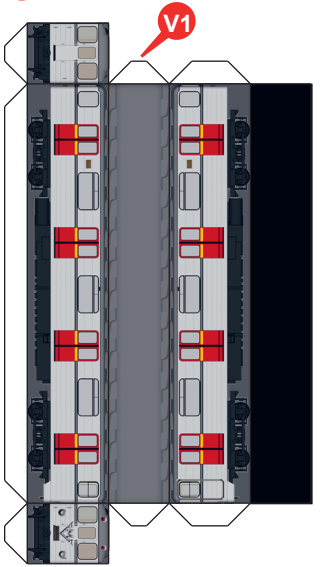
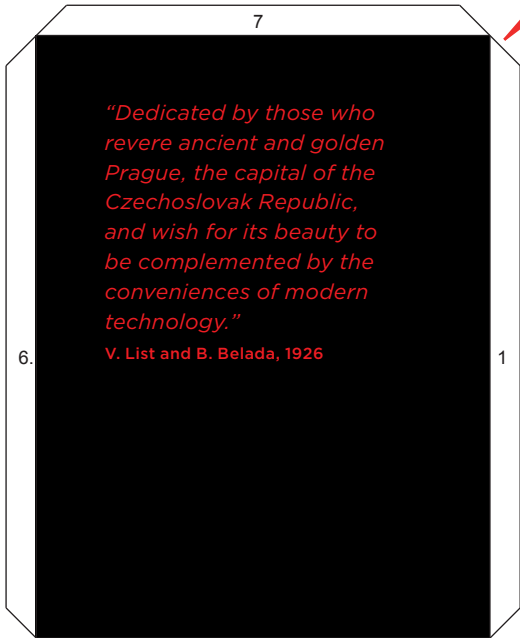


10

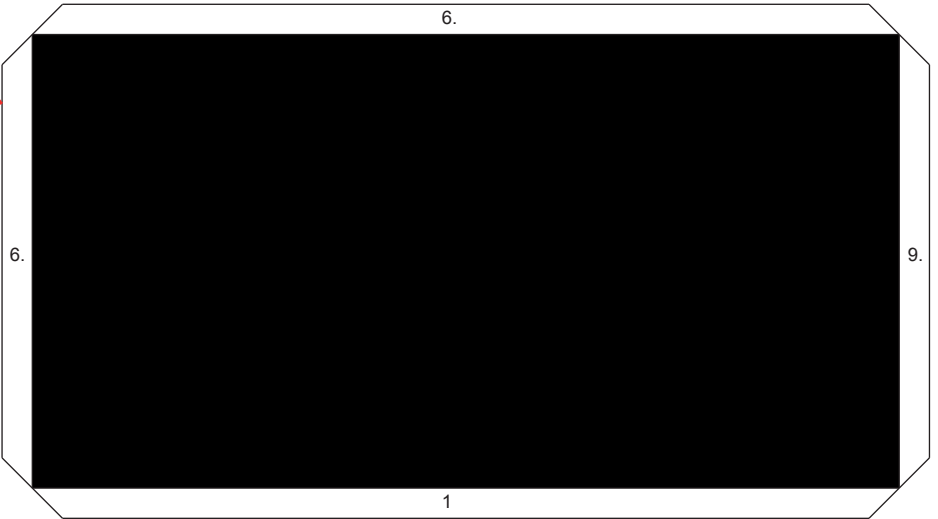
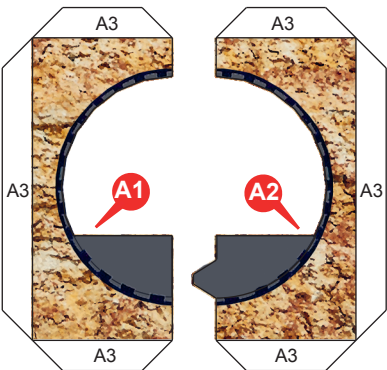


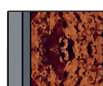
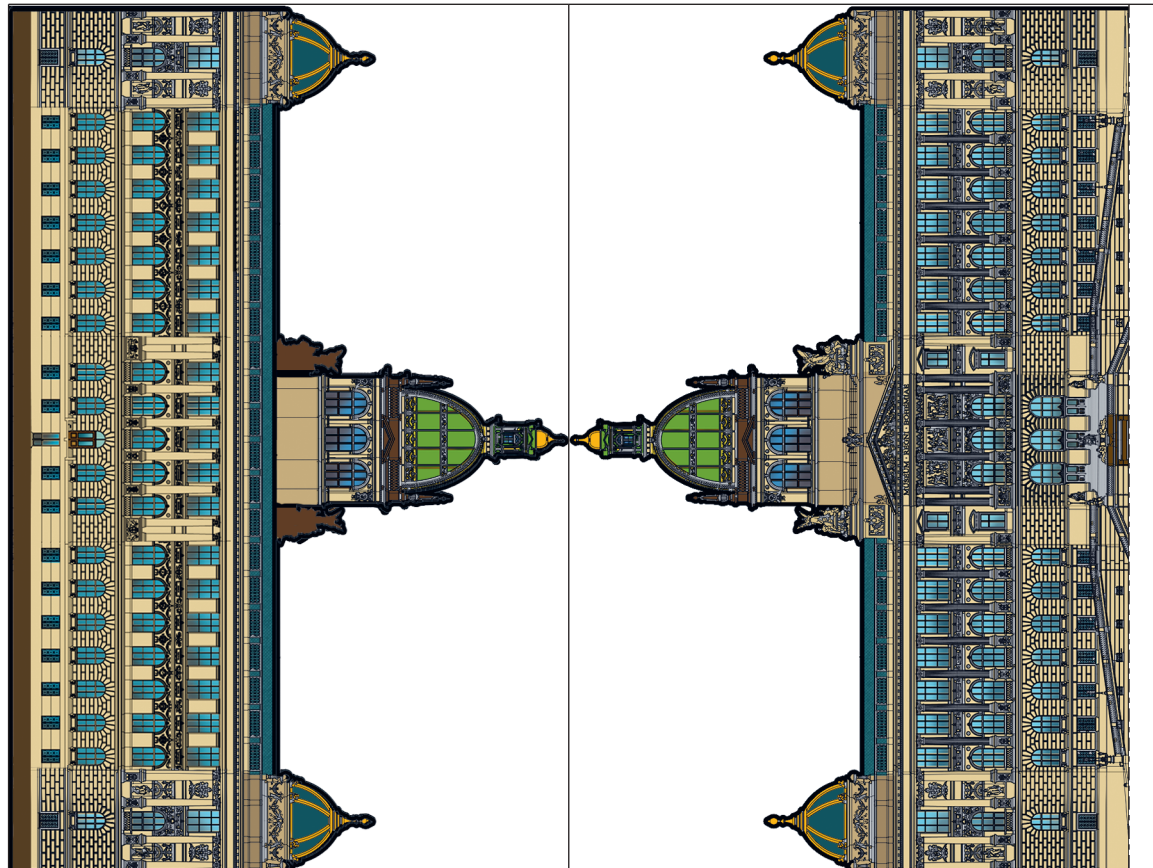
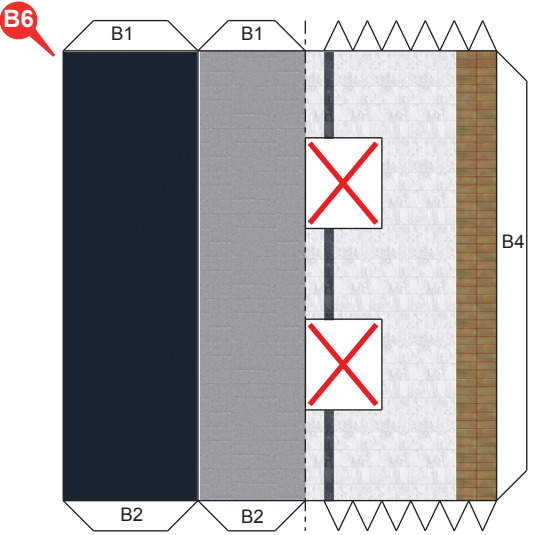
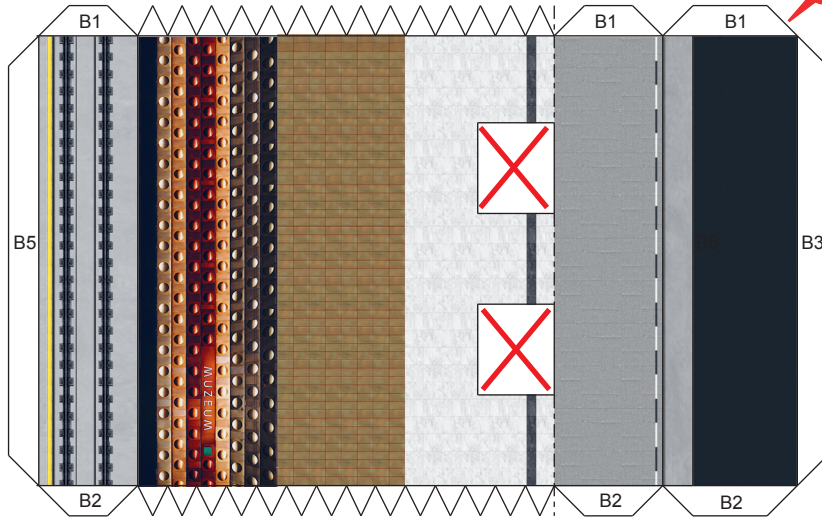
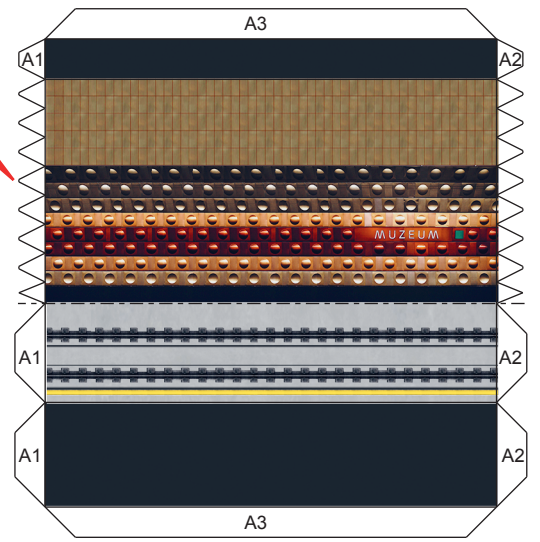
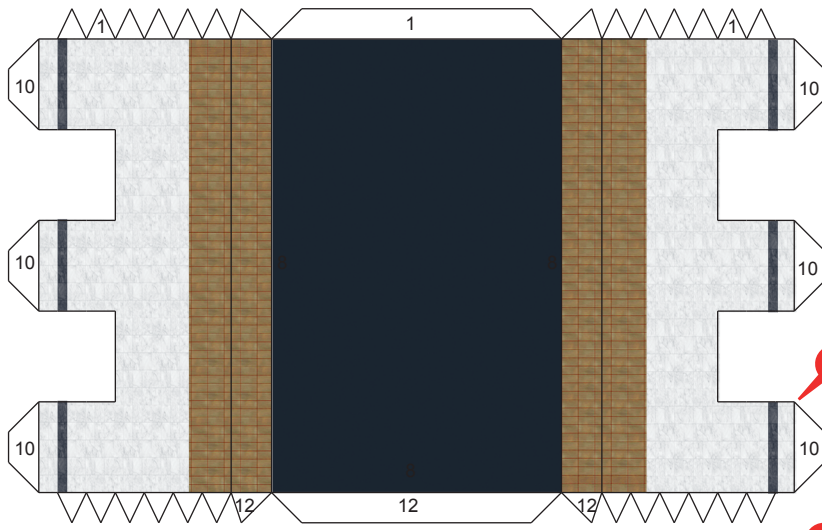
9.

4



8

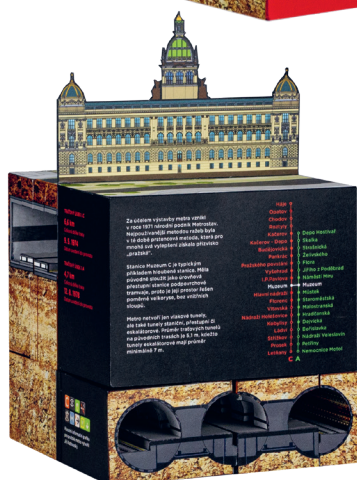




P3

P1

P2



Tips

Whether this is your first experience with paper models or you're an old hand, it doesn't hurt to refresh the basics. If you're an experienced modeller, please don't feel offended.

What will you need?

Scissors and glue, above all. Preferably one large pair of scissors and one smaller pair (such as straight manicure scissors). Plain dispersion adhesive (Hercules brand or similar) and a stick of office glue. If you come across a part that isn't made of paper, "super glue" is ideal.

A modelling knife or scalpel and a cutting mat (available at any hardware store or sewing supplies store) are useful for precision work with small parts and cutouts. A steel ruler will help you when you need to make straight cuts and etch folds.

A blunt knife or needle should be used to etch folds.

What is harder to find is a clean workspace with good lighting and, most importantly, peace and quiet.

So how should you go about the work?

Nice and slow, that's the main thing.

Cut out the pieces with scissors or a sharp knife on a mat. Before cutting out the pieces, take a close look and use a blunt knife or needle to groove the folds. Etch the folds on the reverse side of the piece and the folds in the face side from the reverse side (mark the line on the other side by piercing the end points with a needle). Cutout sections in a piece are usually marked with red diagonal lines.

Before gluing the parts together, make absolutely sure you've got everything in the right place. Follow the instructions, or work on the basis of the image of the finished model, and with a little patience the model will be finished in a few hours (some sooner, some later). Ordinary joins are glued with dispersion adhesive, which is water-based glue that usually becomes transparent when dry. When applying card backing to larger areas, stick glue is more suitable, as it doesn't contain as

much water and the parts won't warp. It is also recommended to let flat parts dry with a weight on top of them. Parts that are not made of paper (wooden skewers, wires) should be affixed to the model with "super glue".

To make the model easier to handle, it is a good idea to glue the entire terrain onto a base of thicker cardboard when finished. This will stabilise it and prevent damage when you or anyone else handles it.

We recommend retouching the glossy white edges of the paper after gluing or even during gluing. You can use ordinary watercolours, tempera or coloured markers.

If you want the model (especially its coloured edges) to last a long time, you can spray it with clear varnish after assembly. The most affordable is matt acrylic spray varnish, which you can get at your nearest hobby shop.

We wish you a steady hand, plenty of time, lots of patience. And most of all, have fun!