

INSTRUCTIONS

RECONSTRUCTION OF THE BUBENSKÁ 1 BUILDING, PRAGUE

Start with the central piece 1 and attach wings 2 and 3 to it, having folded the wings into shape.

The outer shell of the atriums is formed of pieces 4 and 5, covered by roofs 6 and 7.

The inner part of the atriums is formed from pieces 8 and 9.

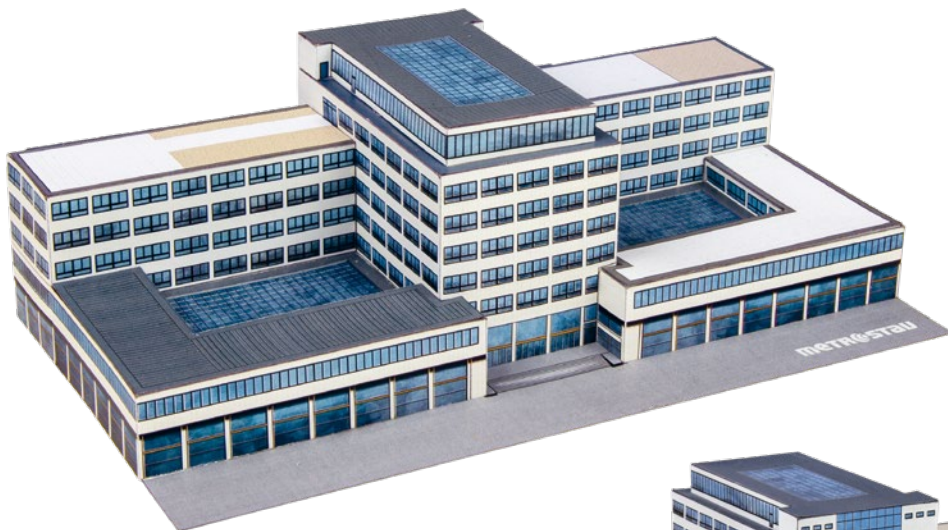
Assemble the roof superstructure from piece 10 and roof 11 and attach it to piece 1.

Close off the low rear wing 12 and attach the connecting pieces 13, 14, 15 and 16 to it at the positions marked on piece 12.

Glue garage 17 between parts 15 and 16, and garage 18 between parts 14 and 16.

Then attach that entire section to pieces 1, 2 and 3.

Glue the building to the terrain piece to hold it in place.



TIPS

Whether this is your first experience with paper models or you're an old hand, it doesn't hurt to refresh the basics. If you're an experienced modeller, please don't feel offended.

WHAT WILL YOU NEED?

Scissors and glue, above all. Preferably one large pair of scissors and one smaller pair (such as straight manicure scissors). Plain dispersion adhesive (Hercules brand or similar) and a stick of office glue. If you come across a part that isn't made of paper, "super glue" is ideal.

A modelling knife or scalpel and a cutting mat (available at any hardware store or sewing supplies store) are useful for precision work with small parts and cutouts. A steel ruler will help you when you need to make straight cuts and etch folds.

A blunt knife or needle should be used to etch folds.

What is harder to find is a clean workspace with good lighting and, most importantly, peace and quiet.

SO HOW SHOULD YOU GO ABOUT THE WORK?

Nice and slow, that's the main thing.

Cut out the pieces with scissors or a sharp knife on a mat. Before cutting out the pieces, take a close look and use a blunt knife or needle to groove the folds. Etch the folds on the reverse side of the piece and the folds in the face side from the reverse side (mark the line on the other side by piercing the end points with a needle). Cutout sections in a piece are usually marked with red diagonal lines.

Before gluing the parts together, make absolutely sure you've got everything in the right place. Follow the instructions, or work on the basis of the image of the finished model, and with a little patience the model will be finished in a few hours (some sooner, some later). Ordinary joins are glued with dispersion adhesive, which is water-based glue that usually becomes transparent when dry. When applying card backing to larger areas, stick glue is more suitable, as it doesn't contain as much water and the parts won't warp. It is also recommended to let flat parts dry with a weight on top of them. Parts that are not made of paper (wooden skewers, wires) should be affixed to the model with "super glue".

To make the model easier to handle, it is a good idea to glue the entire terrain onto a base of thicker cardboard when finished. This will stabilise it and prevent damage when you or anyone else handles it.

We recommend retouching the glossy white edges of the paper after gluing or even during gluing. You can use ordinary watercolours, tempera or coloured markers.

If you want the model (especially its coloured edges) to last a long time, you can spray it with clear varnish after assembly. The most affordable is matt acrylic spray varnish, which you can get at your nearest hobby shop.

We wish you a steady hand, plenty of time, lots of patience. And most of all, have fun!