



**YOUR
COFFEE
EXPERIENCE**

EUREKA ESPRESSO MACHINES

**FROM THE GRIND
TO THE CUP**



www.eureka.co.it



YOUR COFFEE
EXPERIENCE

Complete
your coffee
experience

Match it with **your Mignon**,
to make **your coffee
corner unique**.



PURA

Get inspired by tradition and manual skills.

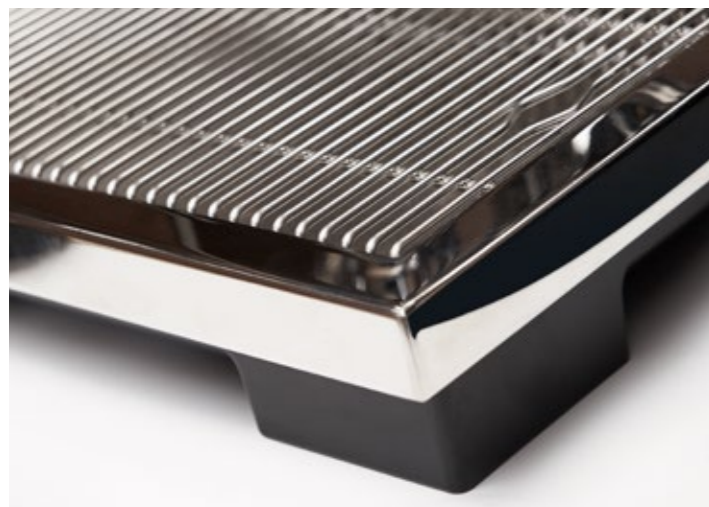
Elegant and Modern Design

Pura is a combination of **aesthetics** and **functionality**. **100% metal body**, its **elaborate finishes** fits perfectly in any kitchen. With a **minimalist look** and **clean lines**, Pura is designed by **Studio Paoli Milano** to **perfectly match your home**.

Barista-Friend

Designed to easily brew great Espresso shots at home, thanks to the combination of **professional heat exchanger technology** and a **total manual control**.

- **No setting required:** unbox, warm up and be ready to extract.
- **Total manual control** for steam, water and coffee extraction, to feel like a **professional barista**.
- **Total cool touch technology**, to provide a safer and more comfortable use of both wands.
- **Extactable water tank** (2 lt capacity) easy to remove thanks to the **comfortable flaps**.
- **Fast warm up:** the machine is ready to brew in only **12-15 mintues**.
- **Capacious Drip Tray** (1 lt), which allows a **large autonomy in coffee preparation**. Horizontal removal, without tilting it, **preventing water from falling outside**. Easy to cean.
- **E61 Group**, for the best coffee quality.
- **Elaborately manufactured stainless steel body**, with a 100% metalbase, for unparalleled stability and robustness.
- **Premium quality, stainless steel boiler**.
- **Empty tank sensor**, which warns you to refill the water tank.



PURA R

Enjoy the silence for your coffee break

Thanks to the last generation rotatory pump, Pura R makes your **coffee break comfortable and quiet.**

Thanks to the minimal pressure fluctuations of the rotary pump system, the extraction of your coffee will remain **extremely stable.** Enjoy your perfect Espresso shots!



COSTANZA

For the most demanding Baristas

Designed to make your Espresso experience unique.

- **Temperature control**, provided by PID-control, it is possible to choose among 3 temperature levels. According to the coffee and the individual preferences.
- **Weekly activation program** allowing to schedule the switch-on time on all days of the week to get the machine always ready and avoid time loss.
- **Dose counter**, to be always aware and monitor the total number of shots.
- **Shot timer**, to achieve greater precision during coffee extraction.
- **Eco mode**, to save energy and make the machine always ready to go thank to heat retaining.



Designed by Studio Paoli Milano

Feel like a professional Barista

- **No setting required:** unbox, warm up and be ready to extract.
- **Total manual control for steam, water and coffee extraction**, to feel like a professional barista.
- **Fast warm up:** the machine is ready to brew in only **12-15 minutes**.
- The inclination of the filter holder follows the natural posture of the barista, ensuring comfort.
- **Total cool touch technology**, to provide a safer and more comfortable use of both wands.



- **Extractable water tank** (2 lt capacity) easy to remove thanks to the **comfortable flaps**.
- **Capacious Drip Tray** (1 lt), which allows a **large autonomy in coffee preparation**. Horizontal removal, without tilting it, **preventing water from falling outside**. Easy to clean.
- **E61 Group**, for the best coffee quality.
- **Elaborately manufactured stainless steel body**, with a 100% metalbase, for unparalleled stability and robustness.
- **Empty tank sensor**, which warns you to refill the water tank.

COSTANZA R

The highest quality, for your Coffee Experience

Customize your Coffee Extraction, and enjoy professional, café-style espresso at home. Costanza R is equipped with a rotary pump:

- Display with PID control, for a customised user experience
- Last generation rotary pump, for the most silent coffee break



CUSTOM VERSION

Customize your Coffee Experience

Choose Eureka Espresso machine with a unique and customized touch thanks to our special panels.



White



Red



Black



Walnut



Oak



Olive

Add a touch of personality to your coffee corner with the **CUSTOM VERSION coffee machine!** Now you can customize the look of your machine by choosing from a variety of wood and colour configurations.

Add a unique touch to your coffee machine, and **bundle it with your Mignon.** **Change style according to your mood!**

Make up your custom!

- 1) choose the model suitable for you*
- 2) customize it with your favourite panels



* Custom versions: available for Pura R, Costanza and Costanza R



Comparative table

		PURA	PURA R	COSTANZA	COSTANZA R
Pressure Profile		Vibration	Rotary	Vibration	Rotary
PID System		no		yes	
Water Feed		Tank	Tank	Tank	Tank
Power absorbed		1250 W			
Brew group	Filter Holder diameter	58 mm			
	Pre-infusion	yes			
	Group typology	E61			
Boiler	Capacity [lt]	1.5			
	Material	Stainless Steel			
	thermal insulation	yes			
Tank	Capacity [lt]	2			
Pressure gauge		yes	Double pressure gauge (pump and steam) available for 110V version and Australian cable ones. No pressure gauge on 220V version.		
Drip Tray capacity [lt]		1			
Dimension	Height	337 mm			
	Width	300.5 mm			
	Depth	444.5 mm			
	Weight	20 kg			
Warm Up		Fast (10-15 min)			
Materials	Body	Stainless Steel			
	Base				
Display	Weekly program	no		yes	
	Shot Timer				
	Temperature control				
	Eco Mode				
Reserve mode		yes (light indicator)			
OPV (Output Pressure Valve)		9 bar			
Accessories		Double filter holder, Blind filter, Double filter, single filter, Anti-burn rubber sleeves			
Custom version		no	yes		
Wooden panels		-	walnut	oak	olive
Color panels		-	white	red	black



**YOUR COFFEE
EXPERIENCE**



**YOUR COFFEE
EXPERIENCE**

Conti Valerio Srl

via Luigi Longo, 39/41
50019 Sesto Fiorentino (FI) Italy
tel. +39 055 4200011
fax +39 055 4200010

info@eureka.co.it
www.eureka.co.it