

IMI External Accommodation

Mattenhof Apartments



IMI students now have the opportunity to live in newly built, shared apartments ideally situated for both the city of Luzern and the IMI campus!

Situated in the newly built Kriens Mattenhof development, these three-bedroom, shared apartments offer the following benefits:

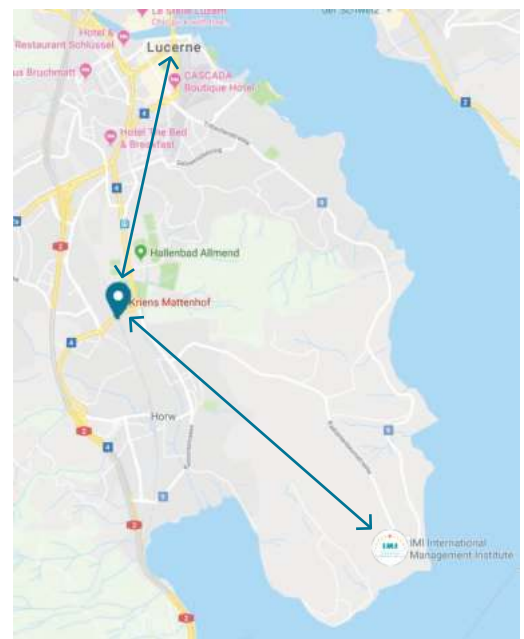
- Three bedrooms, two bathrooms, shared kitchen and living area
- Wi-fi throughout
- Washing and drying machine in each apartment
- Fully furnished with linen and towels provided
- Closely situated to shops and restaurants
- One minute walk to nearest bus stop
- Four-week bus ticket included (at the beginning of the semester)

These new apartments each have three bedrooms accommodating up to six students per apartment. Two rooms offer en-suite bathrooms while the other 13 have shared bathroom facilities.

Become part of this exclusive development community and enjoy the independence of off-campus living! **Enquire today for availability!**

IMI Contact

Mrs. Greta Frey - info@imi-luzern.com - +41 78 704 4129

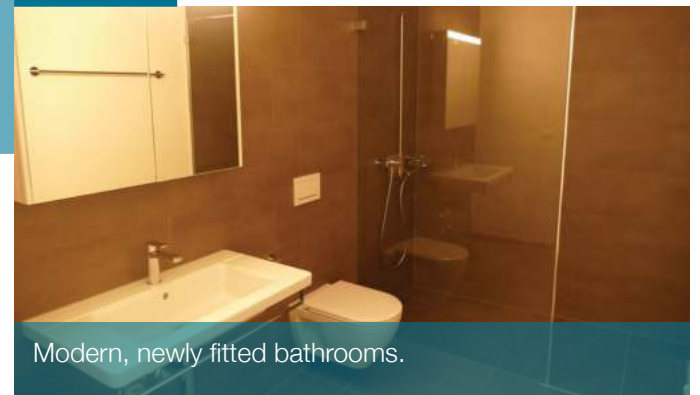


Travel Times

To IMI Campus:	17 mins (by bus)
To Luzern City Centre:	10 mins (by train)



Large, communal living space and kitchen area.



Modern, newly fitted bathrooms.



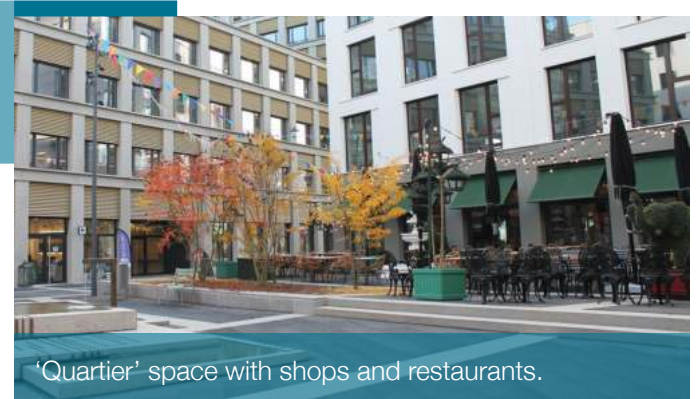
Bright, spacious, twin bedrooms.



Fully fitted kitchens with latest appliances.



Large balcony areas and shared roof terrace.



'Quartier' space with shops and restaurants.

Mattenhof External Accommodation Room Prices

One Semester (22 Weeks)

Twin Room/Shared Bathroom:
3,800 CHF

Twin Room/En-suite Bathroom:
4,800 CHF

Campus Meal Options (22 Weeks)

Full Board:
2,500 CHF

Lunch & Dinner Only:
2,000 CHF

Single Meal:
10 CHF