

Instruction sheet:

- 1 . Types
- 2 . Family Type panel, how it works
- 3 . Inside the host project



NOTES

ESTRO JR Comfort

What to look for:

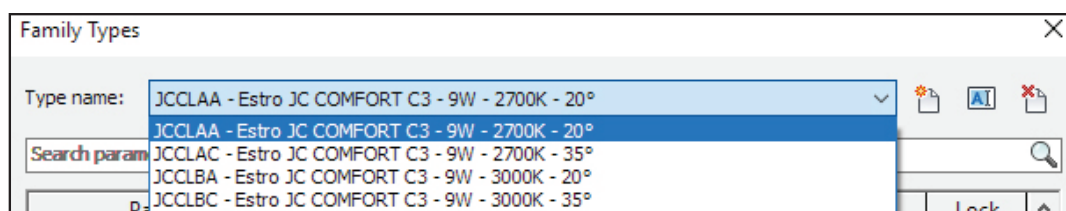
The .rfa file is a "Family" file. It contains a number of 3D models handled by various parameters. In addition to those models you will find all the necessary information to use them.

1 . Types:

Open the file and go to:

Create tab -> Properties tab -> Family types (Image_1)

Here you can find all the available versions of the product. They have different Color Temperatures (K) and Beam Angles while having the same Powers (W).



_1



Please note that this ESTRO Profile is ready-made in modules. The smallest one is 37mm long and it houses a single LED. Then you have a double and triple module up to the standard one which is 140mm long and houses 7 LEDs. By doing so, Ilmas gives you the possibility to combine them to obtain accurate total dimensions.

Every type is easily identified by a unique code (e.g.) (Image_2):

- ① Model code (initial 2 letters)
- ② Diffuser (a single letter)
- ③ LED (a single letter)
- ④ Color temperature (K) (a single letter)
- ⑤ Beam angle code (a single letter)
- ⑥ Characteristics recap

① ② ③ ④ ⑤ ⑥
JRCLCC - Estro JR COMFORT C3 - 9W - 4000K - 30°

_2

2. Family type panel, how it works

Text info

The first section is about the available versions of the product depending on: (Image_3)

- ① Source Quality
- ② Available Color Temperature
- ③ Available Beam
- ④ Available Finishing Colors
- ⑤ Available Drivers
- ⑥ Recap of lighting parameters



Please note that Drivers are required and they must be purchased separately.
In this section of the panel you will find the necessary information to choose between the available ones.

Family Types

Type name: JCCLAA - Estro JC COMFORT C3 - 9W - 2700K - 20°

Search parameters

Parameter	Value	Formula	Lock
Text			
Code	JCCL..... (code to complet	=	
① Available Source Quality	LED 5050 CRI>90 24V	=	
② Available Color Temperature	2700K (cod.A) - 3000K (cod.B) -	=	
③ Available Beam	CLICK here for INFO ----->	=	
④ Available Finishing Colors	CLICK here for INFO ----->	=	
⑤ Available Driver	CLICK here for INFO ----->	=	
⑥ Setting of lighting parameters		=	
Materials and Finishes			
Cover	White (cod. WW)	=	
Extruded Profile	White (cod. WW)	=	
Electrical			
Wattage Comments	9W	=	
Lamp	LED	=	
Electrical Engineering			
Voltage	24.00 VA	=	
Electrical - Lighting			
Calculate Coefficient of Utilizat	<input checked="" type="checkbox"/>	=	
Coefficient of Utilization (defau		=	
Electrical - Loads			
Apparent Load	9.00 VA	=	
Photometrics			
Tilt Angle	90.00°	=	<input checked="" type="checkbox"/>
Beam	20°	=	
CRI (Color Rendering Index)	CRI>90	=	
Initial Color	2700 K	=	

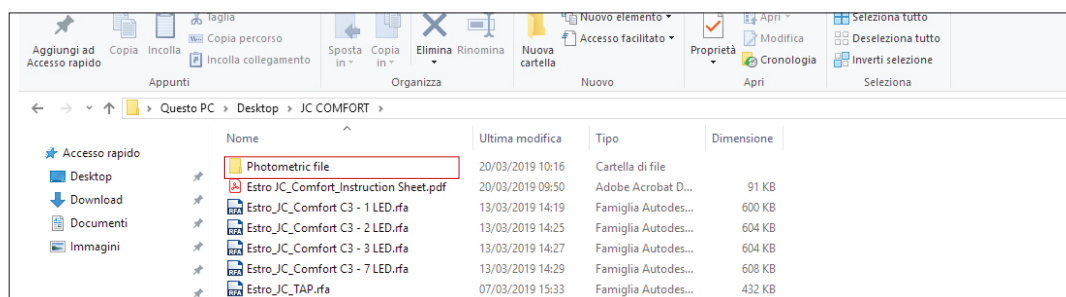
Electric / Photometric info:

The following part of the interactive panel is about electric and photometric characteristics.



Please note that this section is given to you already filled with the correct information so you don't need to manually change anything. Each type is ready-to-use.

Each product type is linked to the proper photometric .ies file. The .ies file will be automatically downloaded within the 3D model and placed in a specific folder. (Image_4)



_4



Please don't change the position of the .ies file or you will have to manually relink it inside the software.

Identity data:

The last part of the panel contains some useful links (Image_5). One that directly takes you to the data sheet of the specific type on the Ilmas website, another one that takes you to the price list request form and the last one that takes you to Ilmas Website.

Here you also have the Model Name, a brief description and an email address to refer to if necessary.

Data sheet	https://s3-eu-west-1.amazonaws.com	=	
Description	Trim recessed installation fitting wi	=	
Type Image		=	
Info	ilmas@ilmas.com	=	
Model	Moon 0228	=	
Keynote		=	
Price list	http://www.ilmas.com/en/richie	=	
Manufacturer	ILMAS s.p.a.	=	
URL	http://www.ilmas.com/en/index	=	

_5



All .rfa files are fully editable but if you need a special product you can ask for the specific file. Do not hesitate to contact us.



3. Inside the host project

3.1 How to import a .rfa file

Open your project.

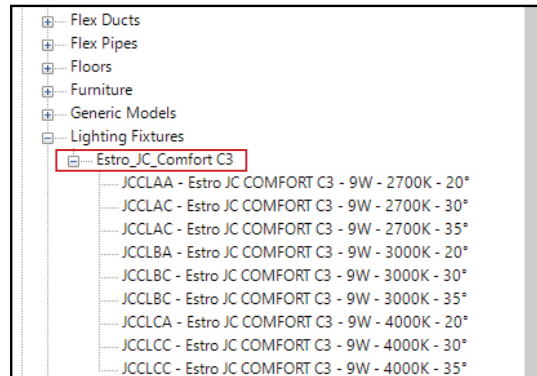
Go to: *Insert* tab. -> *Load from library* -> *Load Family*

Choose the .rfa you have previously downloaded and click open.

Revit will automatically place the Family file in the project Browser under the heading *Families - Lighting fixtures* (Image_6)

The tree diagram will now show the family types listed under the Family name.

Select the type you want to use according to the characteristics.



_6

On the right side of your monitor you will find all the object properties that have been already set out. To place the object just drag and drop it from the Project browser to the correct position in your project.



Please note that the current lighting fixture is designed on a ceiling based Template. It means that you can only place it on an existing false ceiling. The software will only allow to drop it there.

Moreover you will notice that by placing the object on the ceiling/false ceiling it automatically creates an installing opening of an appropriate size.



3.2 Moving through the types

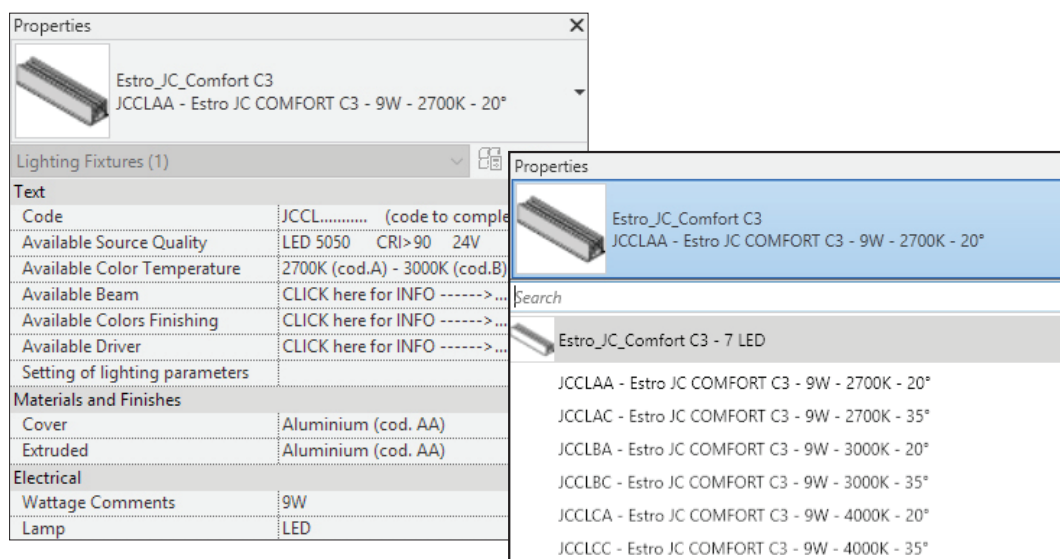
Once you have placed the object you can see the *photometric diagram* in 3D.

If it doesn't happen please check the box *Light Source* in your *Visibility/ Graphic Overrides* options under the heading of *Lighting Fixtures* and select *Apply*.

The useful feature of a Family file is that you can switch from a type to another an endless number of times.

Select it in one of the available views then go to the *Properties* tab on the right side of the monitor and choose a different one from the drop-down menu listing all the types. (Image_7)

See the Photometric diagram changing in 3D model.



_7



Please note that the same Project can host more than a single Family.

You can download a product (or even a completely different one) in all the existing versions and upload every file in the same project. The *Project Browser* updates as it happens and shows all the loaded families. It is now possible to switch not only from a type to another but also from a Family to another without having to remove the old object and place a new one every time. Revit will automatically replace it in the model in the right position. To do so follow the same process previously illustrated.



3.3 Dimensions and Finishes, how to choose.

The last part of the code is made up of numbers and letters describing the desired length of the profile and the selected finishes for both the extruded profile and the cover.

Once loaded in a host project, every Type of every .rfa file offers the possibility to choose and visualize all the available options or to edit them.



Always remember that any change to the 3D model won't effect its code. To correctly list the objects in your project you must rename, or duplicate and rename the types adding the missing part of the code.

Follow the instructions to choose the length:

The 3D model you downloaded is designed in the size of the minimum repeatable module which is 140mm long and houses 7 Leds. You have to duplicate the items and place them next to one another the number of times required to reach the right size. Remember that you can also add 1/2/3 Led modules. Every profile can be supplied within a maximum number of 20 modules, consisting of a total of 280cm.

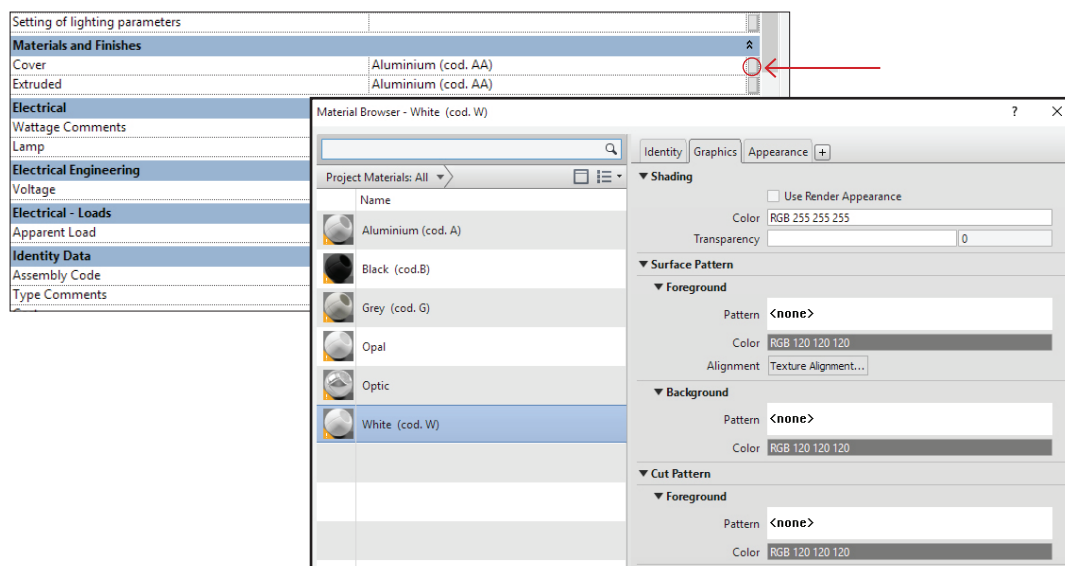


Inside the downloaded folder you will find four family files containing one type of module each. To use them in your project you have to load every single one of them as explained earlier.

Follow the instructions to change the finishing color:

Left Click on the object, go to the *Properties* tab on the right side of the monitor and select *Edit Type*.

Go to the second section of the panel that opens and click on the *Extruded Profile Material - Value* line. Please click the dots at the end of the line to open the *Material Browser* and choose among the possibilities. (Image_8) Repeat for the Cover finishing color.





Please keep in mind that by changing the Extruded profile's length and the cover's color the name and the relative Code of every type does NOT change. If you need to use and catalogue different finishes for the same product the type will have to be duplicated and saved with a proper name.

Open the *Type Properties* panel as shown earlier by clicking on *Edit Type*.

Select *Duplicate*, give a new unique name to the object. Maybe incorporate the additional *numbers and letters* identifying length and color.

This will allow you to catalogue all the types within a *Schedule of Materials/Objects/Lighting fixtures*.

Parameter	
Text	
Code	JCCL.....
Available Source Quality	LED 5050 C
Available Color Temperature	2700K (cod.A)
Available Beam	CLICK here for
Available Finishing Colors	CLICK here for INFO ----->
Available Driver	CLICK here for INFO ----->
Setting of lighting parameters	
Materials and Finishes	
Cover	White (cod. W)
Extruded Profile	White (cod. W)
Electrical	
Wattage Comments	9W
Lamp	LED
Electrical Engineering	
Voltage	24.00 VA
Electrical - Loads	
Apparent Load	9.00 VA
Identity Data	
Assembly Code	
Type Comments	Lighting fixture to be multiplied to create a line of the required len
Cost	
Data sheet	http://www.ilmas.com/en/azienda/estro.html

_9



In the downloaded folder there's another family file called *ESTRO JR TAP*. It contains the initial and final element to be applied to every linear combination of modules. It suits every profile and must be used only at the beginning and at the end of a profile. It is not a straight connector.

Be sure to add a total of 0,6 cm to the total linear length for the two caps.



Final comments:



All the instructions given here can be applied to all the ESTRO COMFORT category products. Names and images referring to a specific product are to be intended as an example.

Ilmas S.p.a is always available for any necessity. Please refer to the society contacts for your requests, we will be glad to help.

Dimensions and shapes of the 3D models are indicative. Always check the Data Sheets before your purchase.

Ilmas reserves the right to change Photometric and Electric characteristics of the products without notice. Once again, always refer to Data Sheets for official information.