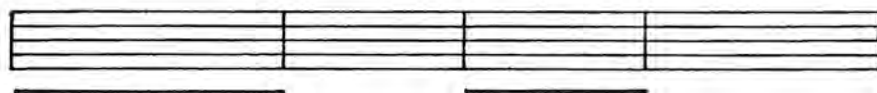


The following rules are for **operating the bellows**:

A strong line is marked under the staff, if the bellows should be pushed.

If there is no line, the bellows are pulled.



Exercises on the 2nd (middle) row

The notes are through the lines. The 5th button (standard model), or the 6th button (luxury model) is the unison button. NB, with all exercises:

Correct playing position - correct fingering - smooth operating of bellows - counting aloud in rhythm.

1. A whole note lasts four beats.

2. Each half note lasts two beats.

3. A half rest also has the value of two beats.

(From 1 - 2, the note is played, from 3 - 4 omitted.)

4. Whole notes interchanging with half notes. The C sign stands for 4/4.

5. Each quarter note lasts one beat.