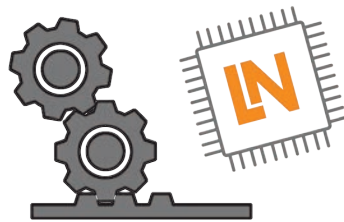


CYBER-PHYSICAL SYSTEM

People, Machinery and Products in the
Smart Factory

CYBER-PHYSICAL CONVEYOR BELT SYSTEM

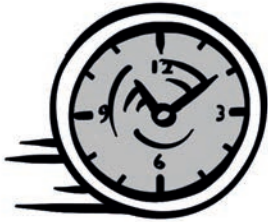


One unit: Conveyor belt, electrical & mechanical components with integrated control unit

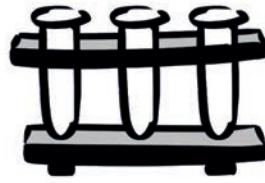


For everyone: From programming novices to professional users | providing the fundamentals for Industry 4.0 (smart factories)

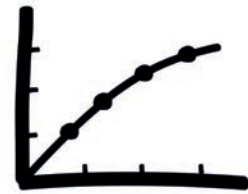
A CPS (cyber-physical system) describes a module comprised of three components, which is absolutely necessary to operate production systems using Industry 4.0 technology. Consequently, it forms the foundation for a modern production line.



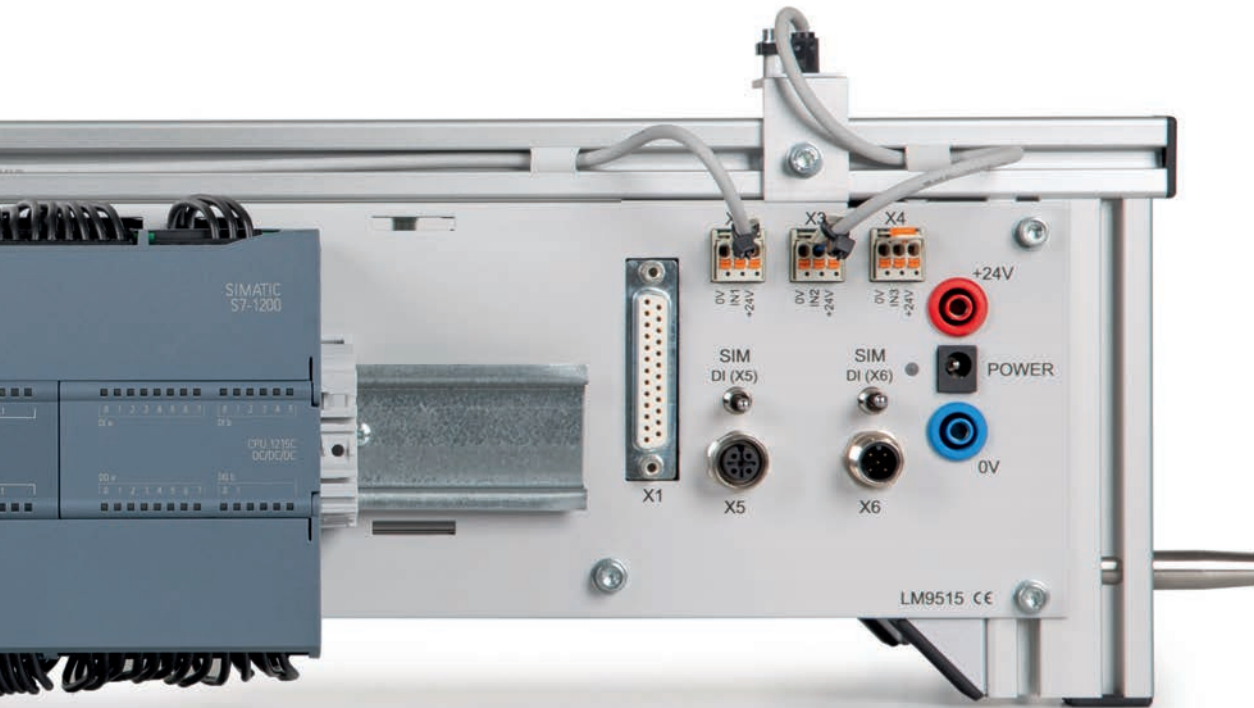
Brief set-up and configuration times:
leads to fast initial start-up time



Optimal conditions for the
laboratory



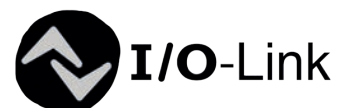
Recording and evaluation of
performance data



Modern communication:
PROFINET for networking



Information transfer to the ERP and
MES in the cloud



Extendible with I/O link technology



The three components of a CPS are:



Mechanical & electronic (mechanical set-up with sensors and actuators)



microcontrollers



interface to the Internet



LUCAS-NÜLLE GMBH

Siemensstraße 2
50170 Kerpen, Germany

t: +49 2273 567-0
fax: +49 2273 567-69

www.lucas-nuelle.com
export@lucas-nuelle.com