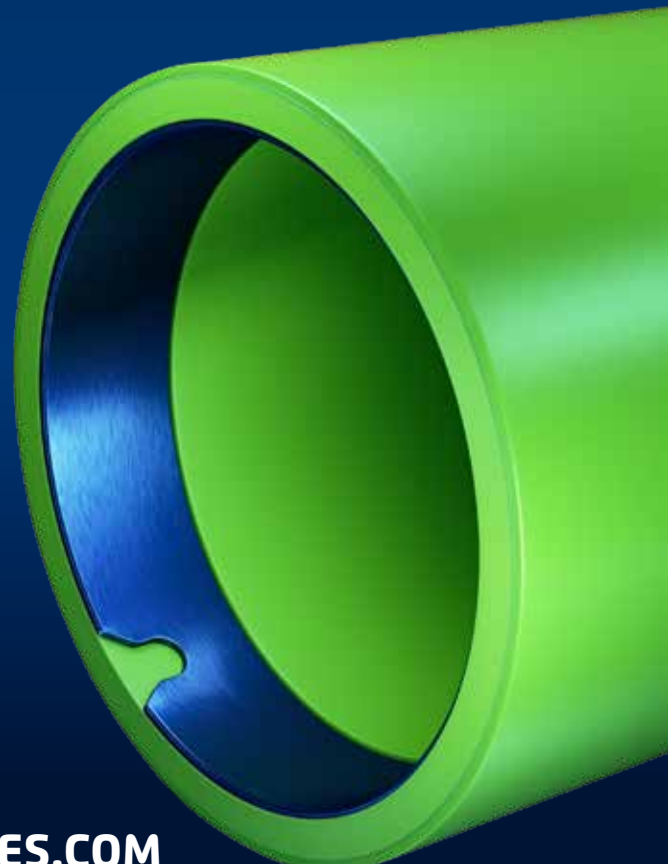
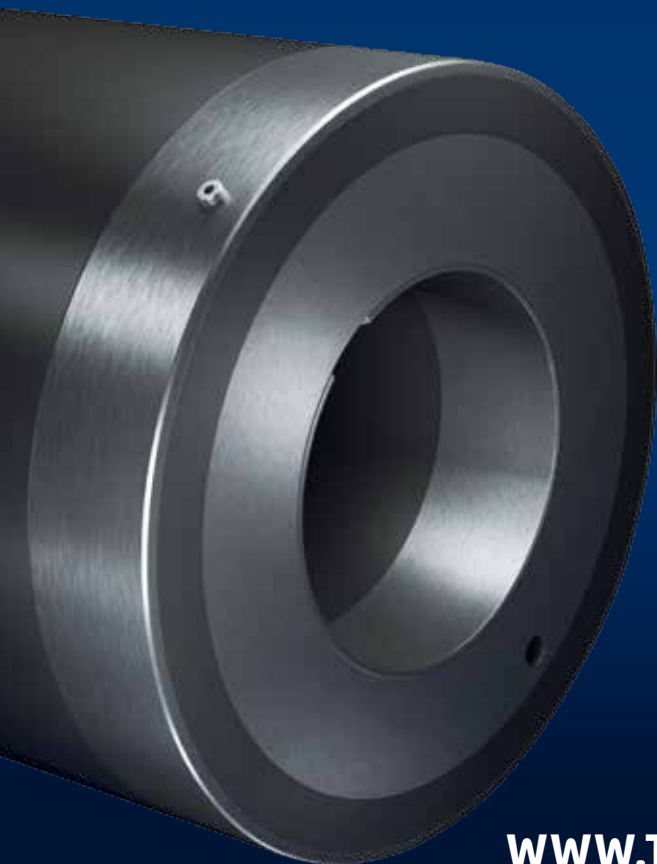


SLEEVE MANUAL



TECH SLEEVES

THE FUTURE IS NOW



WWW.TECH-SLEEVES.COM

THANK YOU FOR BUYING TECH SLEEVES®!

This user manual illustrates how to use and care for your sleeves.

Read the document carefully to get the best possible performance from your Tech Sleeves.

Do not hesitate to contact us, for any additional question.

GETTING STARTED

1 OPEN THE BOX

Open the sleeve box and take the sleeves out.



2 UNPACK THE SLEEVES

Remove the corrugated paperboard with care.



3 INSPECTION

Inspect the sleeves carefully to identify if any damage has been caused during the transportation.



4 WAIT FOR 24 HOURS

Allow the sleeves to rest for 24 hours after unpacking. This will help the sleeve to adapt to the temperature in the factory in order to ensure a perfect fit.





WORLDWIDE CUSTOMIZED SLEEVE SOLUTIONS

Tech Sleeves offers Bridge and Plate Sleeves for the global flexographic printing industry. We strive to enhance the printing quality and overall efficiency through a combination of experience and innovation.



TECH SLEEVES
THE FUTURE IS NOW

H. Kamerlingh Onnesweg 2, 2408 AW Alphen aan den Rijn
P.O. Box 252, 2400 AG Alphen aan den Rijn, The Netherlands

T 0031 172 503611 | F 0031 172 437919 | E info@tech-sleeves.com

WWW.TECH-SLEEVES.COM



@techSleeves