

VISIONTRACK

THE NEXT GENERATION OF TELEMATICS
AND INTEGRATED CAMERA SOLUTIONS

VT2000

Enable Alarm output on SD card



THE UK'S MOST AWARD-WINNING CAMERA TELEMATICS COMPANY



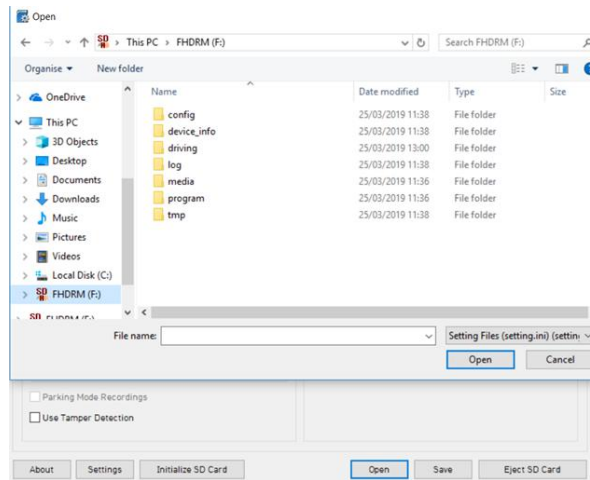
www.visiontrack.com

The purpose of this guide is to show you how to enable the alarm trigger output from the VT2000.

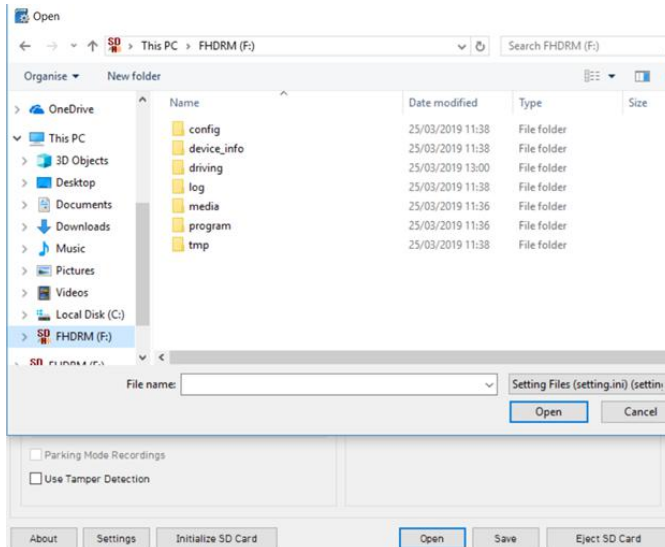
You will need to install the Configuration tool to be able to access the SD card config.

Install the configuration tool, open this and insert your SD card.

Click open on the Config tool

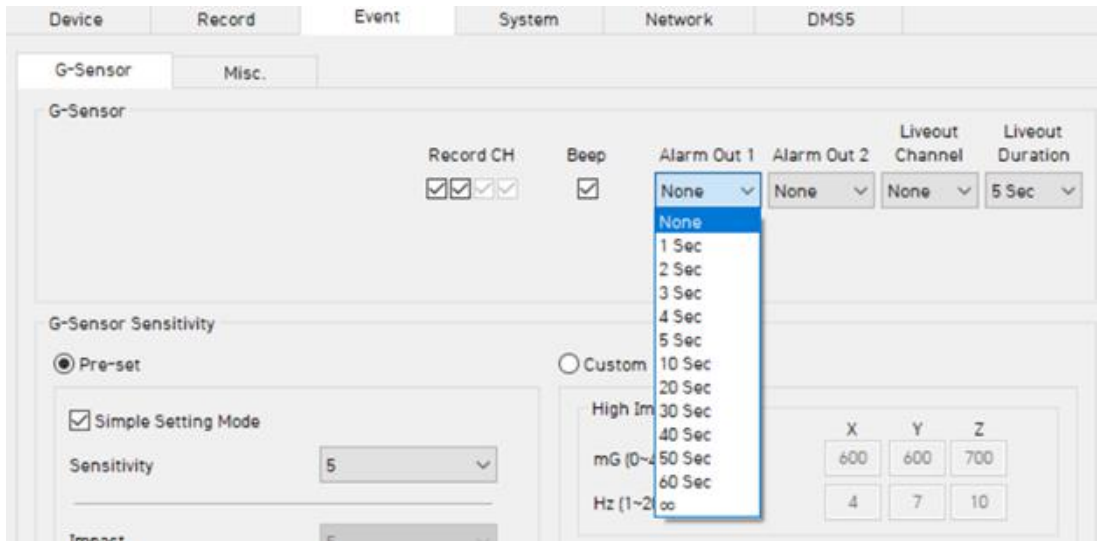


Open the Device_info folder and double click the setting.ini folder



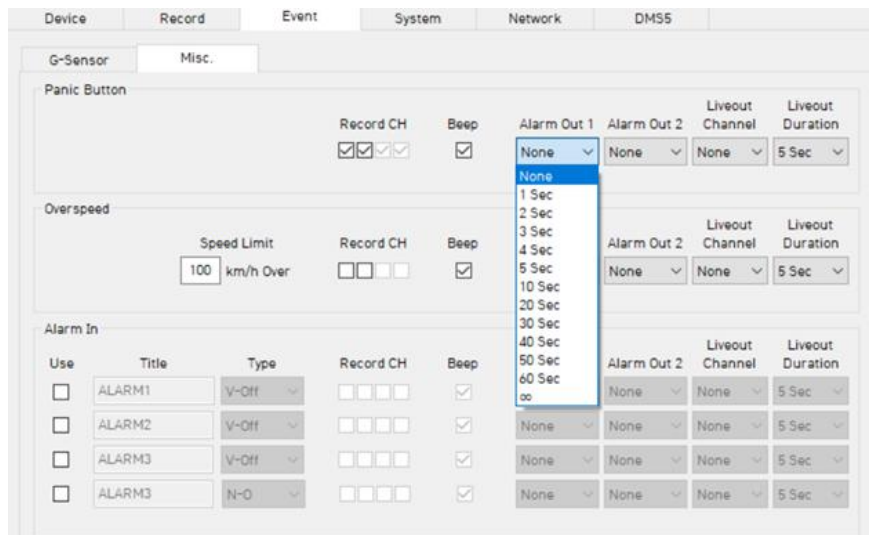
Select Event tab > G-Sensor tab

Change Alarm 1 and Alarm 2 out from None to the desired Alarm out duration.



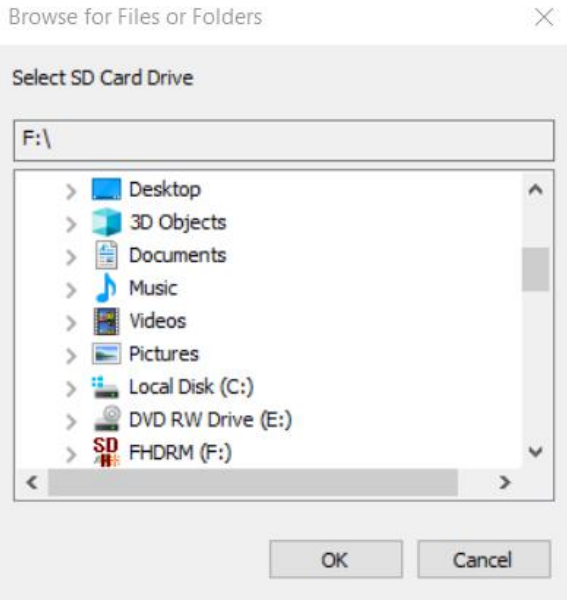
Select the Misc tab

Change Alarm 1 and Alarm 2 out for Panic button from None to desired Alarm out duration.

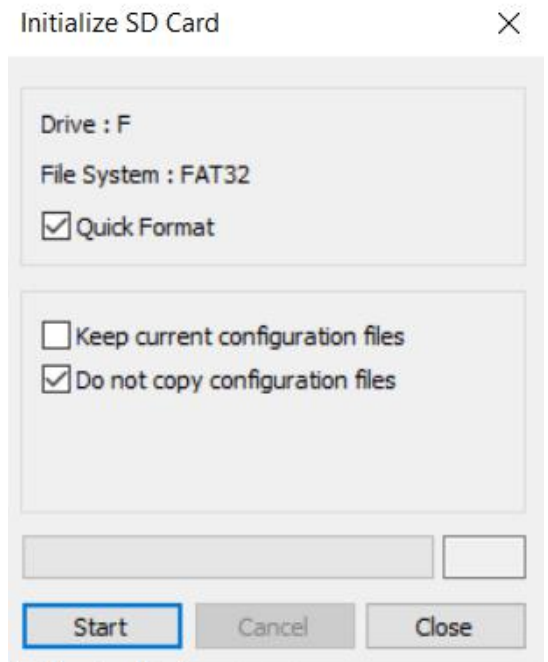


To save the settings

Click on Initialize SD card > Select the SD card



Select do not copy configuration files and select start



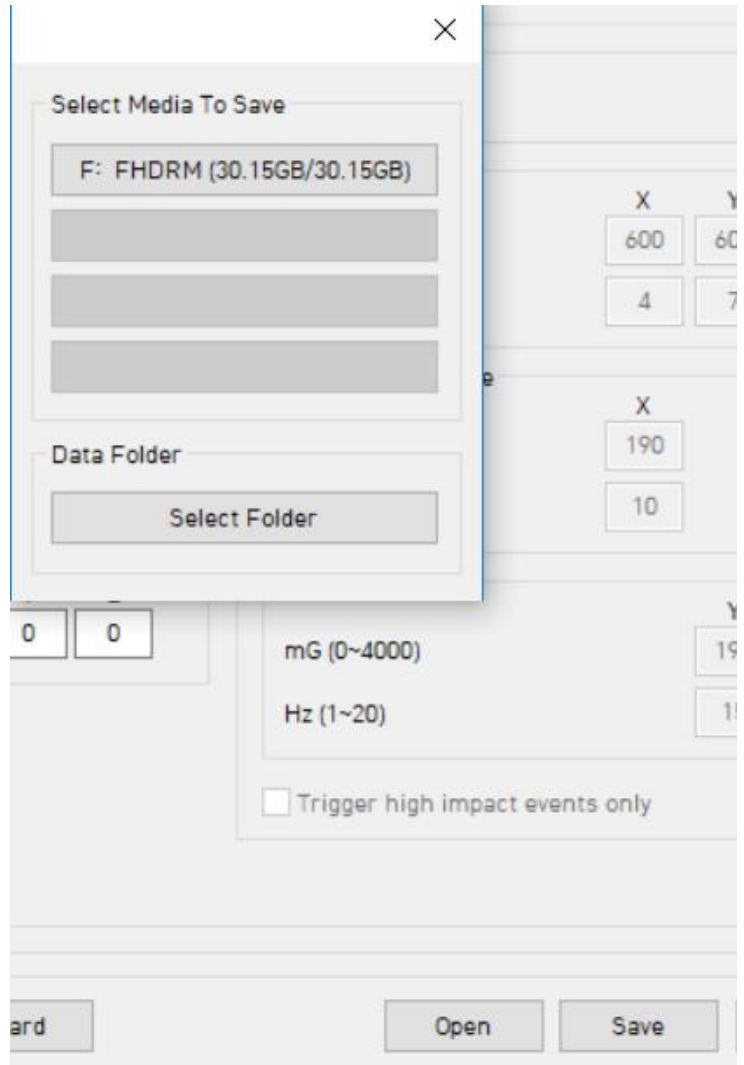
Once SD card is initialized

Configuration Tool X

SD Card Initialized.

OK

Click Save



Once complete you can click on ok and then eject the SD card.