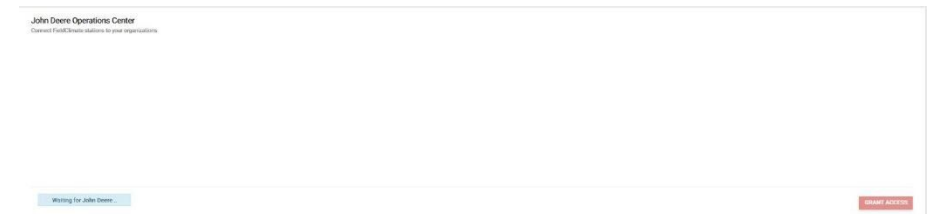


- Click on “GRANT ACCESS”.



- A login page from <https://myjohndeere.deere.com> should appear in the same browser window.

John Deere Operations Center Sync for iMETOS Weather Stations

A new FieldClimate version with the functionality to sync iMETOS stations with John Deere Operations Center has been launched and is ready and available for all FieldClimate and John Deere users.

Here follows a quick guide how you can setup the sync using <https://ng.fieldclimate.com>.

JD push-service

- This procedure will link your JohnDeere account with your FieldClimate account to activate the push service. Setup is required only once.
- Go to “User menu”, sub menu “API Services”.

Bei MyJohnDeere anmelden

Benutzername

» Benutzername vergessen?

Kennwort

» Kennwort vergessen?

ANMELDEN

Speichern

Nicht registriert? [Neues Konto erstellen](#)

» [Anmeldehilfe](#) » [Benachrichtigungen \(0\)](#)
Die Nutzung dieser Seite unterliegt unseren
[Benutzungsbestimmungen](#)

Die neue Perspektive für Ihren Betrieb



Intro-Clip

ANSEHEN



Interaktive Webtour

ANSEHEN

ERFAHREN SIE MEHR

[Site Map](#) [Rechtliche Hinweise](#) [Impressum](#) [kontakt](#)

Copyright © 2018 Deere & Company. All Rights Reserved.



- After entering JD credentials and login you'll go back to FieldClimate automatically.
- All membership organizations of the user will be gathered from JD account.

John Deere Operations Center
Connect FieldClimate stations to your organizations

Fetching organizations from My JohnDeere

GRANT ACCESS

- All iMETOS stations registered for the FieldClimate account are listed as well.

John Deere Operations Center
Connect FieldClimate stations to your organizations

PESS 1 - 38055

STATION ID	STATION NAME	DEVICE TYPE	LAST COMMUNICATION	CONNECT TO MYJD
0000146		iMetos 3.3	29/08/2018 08:32	YES NO
0000235		iMetos 3.3	03/10/2018 11:11	YES NO
0000264		iMetos 3.3	03/10/2018 10:04	YES NO
0000555		iMetos 3.3	03/10/2018 11:32	YES NO

GRANT ACCESS

- Now select your target JD organization from top-right organization dropdown menu.
- For each individual station you want to sync with mydeere.com/map, click "YES".
- You can select stations for multiple organizations, one after another.

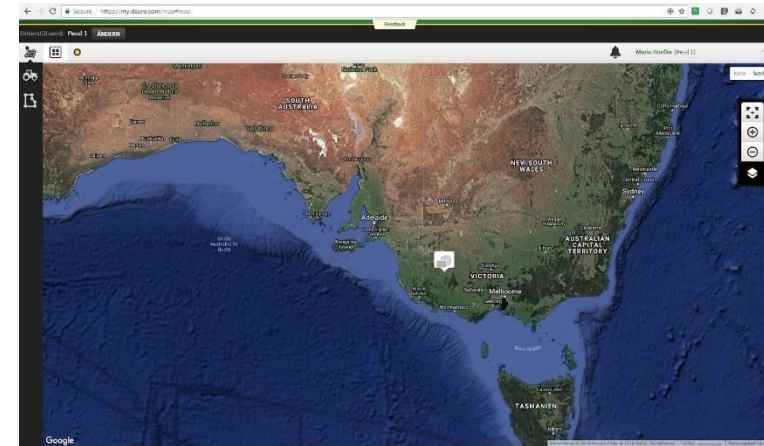
John Deere Operations Center
Connect FieldClimate stations to your organizations

PESS 1 - 38055

STATION ID	STATION NAME	DEVICE TYPE	LAST COMMUNICATION	CONNECT TO MYJD
002049E1		iMetos 3.3	03/10/2018 07:18	YES NO
00204E22		iMetos 3.3	03/10/2018 12:32	YES NO
002053A0		iMetos 3.3	03/10/2018 04:04	YES NO
002058B0	CO2	iMetos 3.3	26/09/2018 07:51	YES NO
0110202A		iMetos 3.3	03/10/2018 05:02	YES NO

GRANT ACCESS

- The selected stations will appear just after their activation in the selected organization on mydeere.com/map.
- Every station is visible for all users belonging to the same organization on mydeere.com/map.
- Every new sensor reading sent to FieldClimate upload servers will trigger a new data push towards <https://my.deere.com/map#map>.



- A mouse click on the IoT symbol opens the latest station data readings.
- A click on the sensor headings opens <https://ng.fieldclimate.com>.



Pessl Instruments GmbH
 Werksweg 107, 8160 Weiz, Austria
 Tel: +43 (0) 3172 5521
 Fax: +43 (0) 3172 5521 23
 Email: office@metos.at