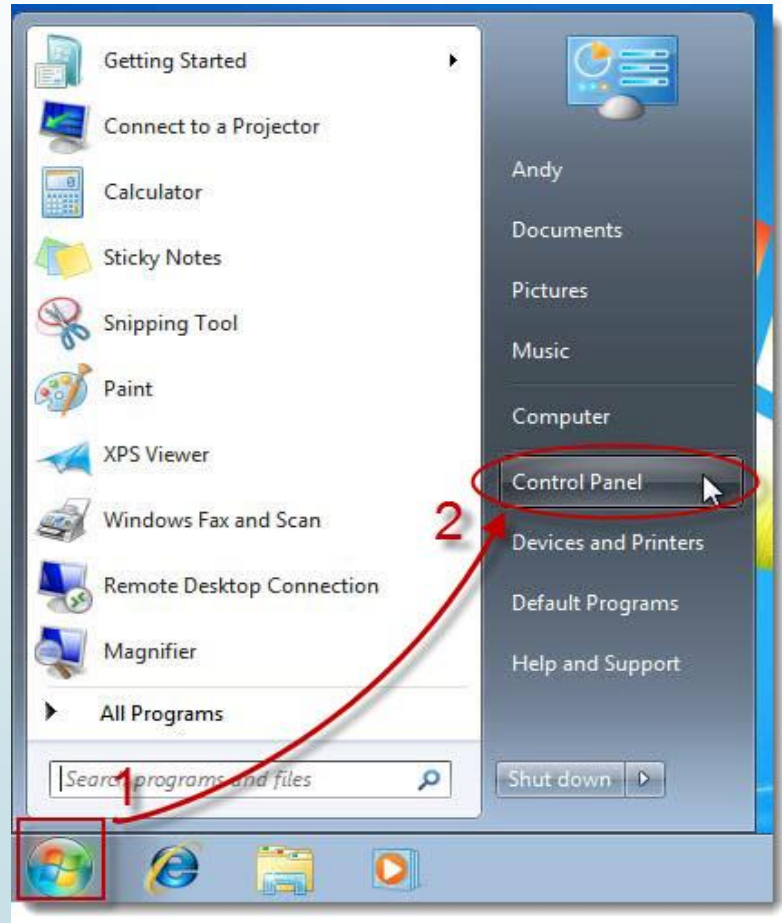


How to Fix Blue Screen Issue in HP Computer

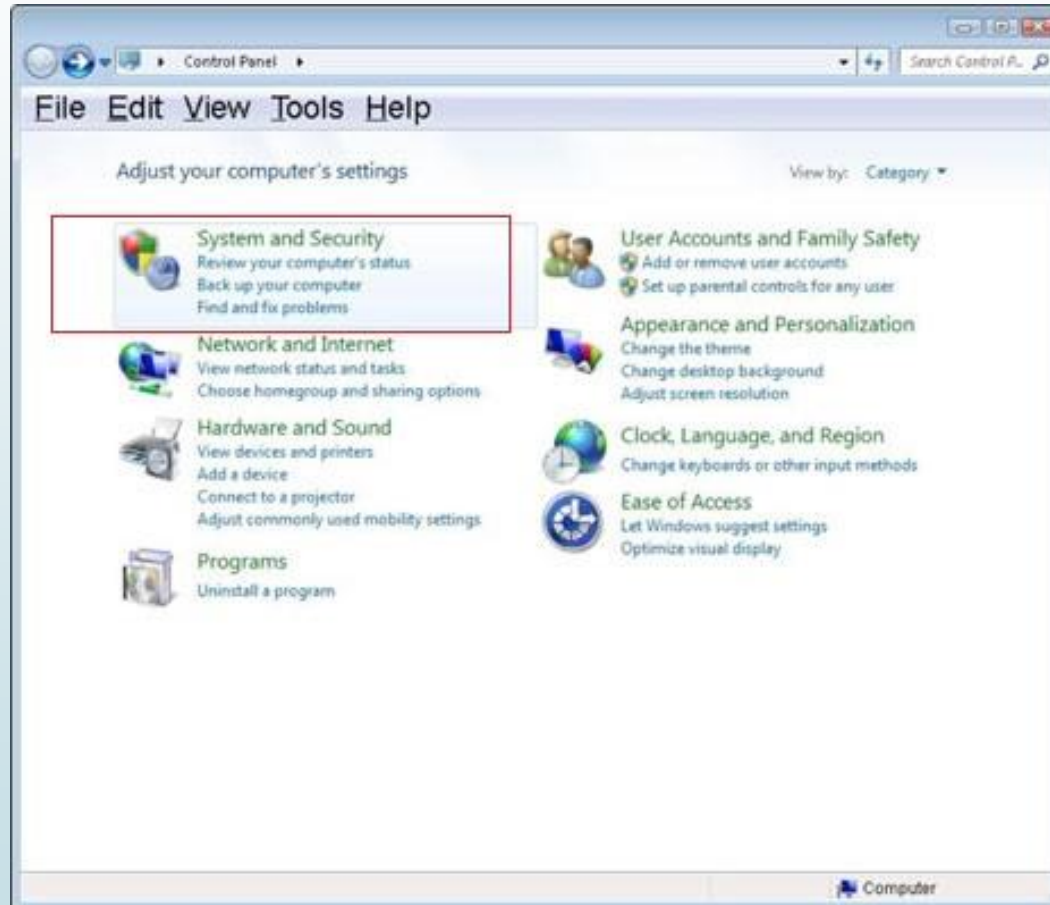
How to Fix Blue Screen Error in HP Computers



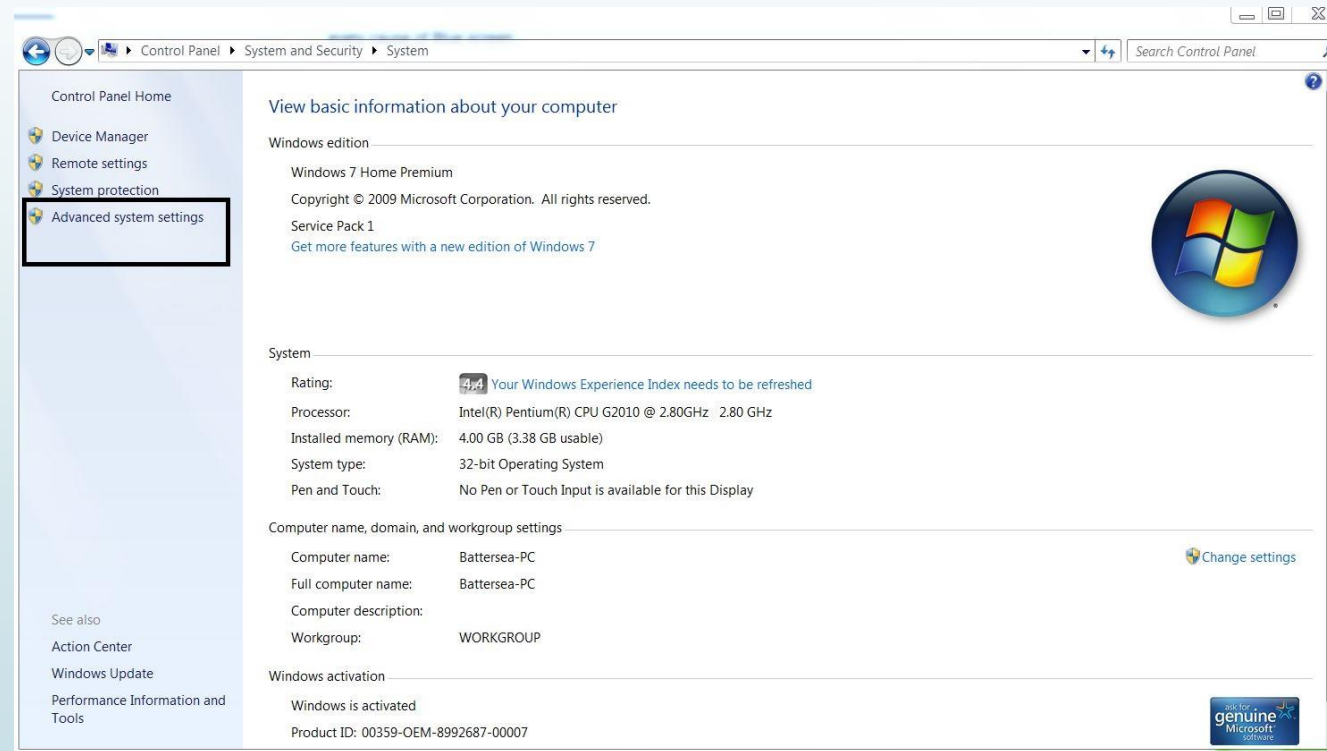
- First, Start Button & Go to Control Panel System



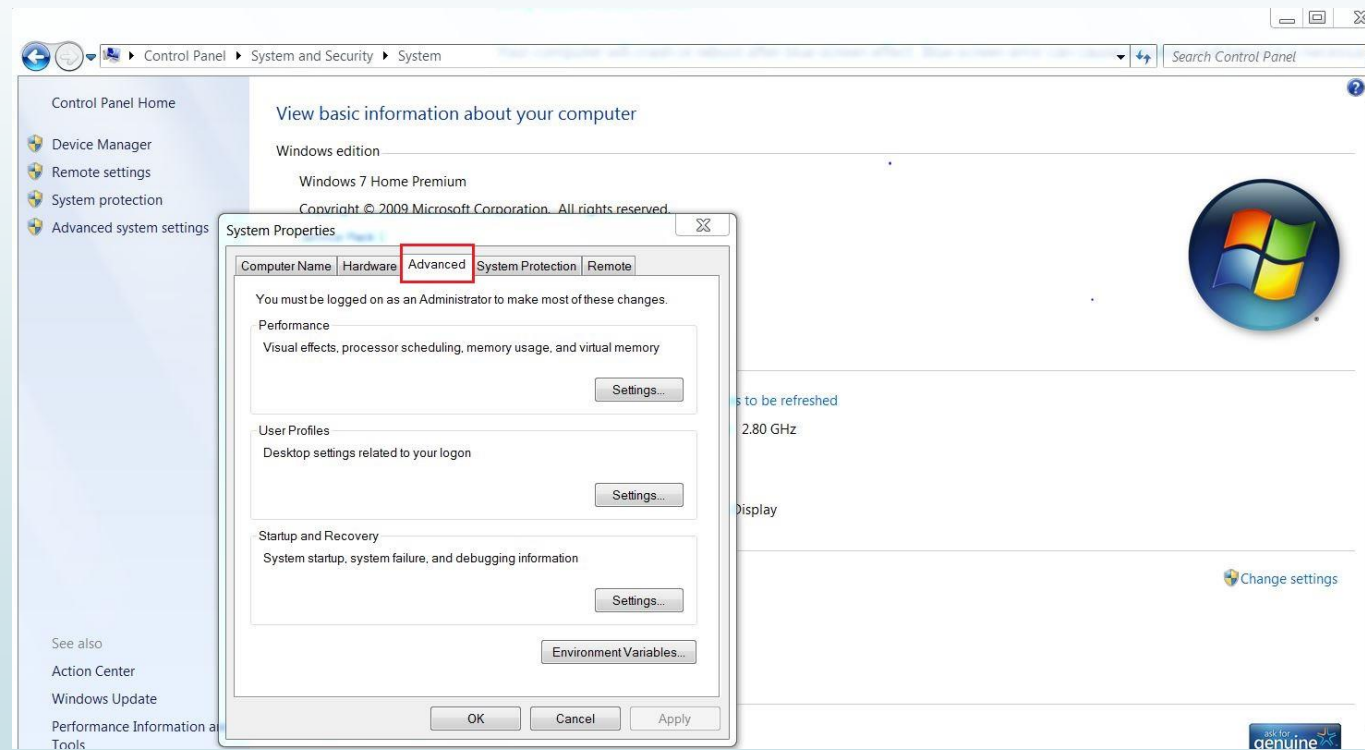
- Then, Click Security & System



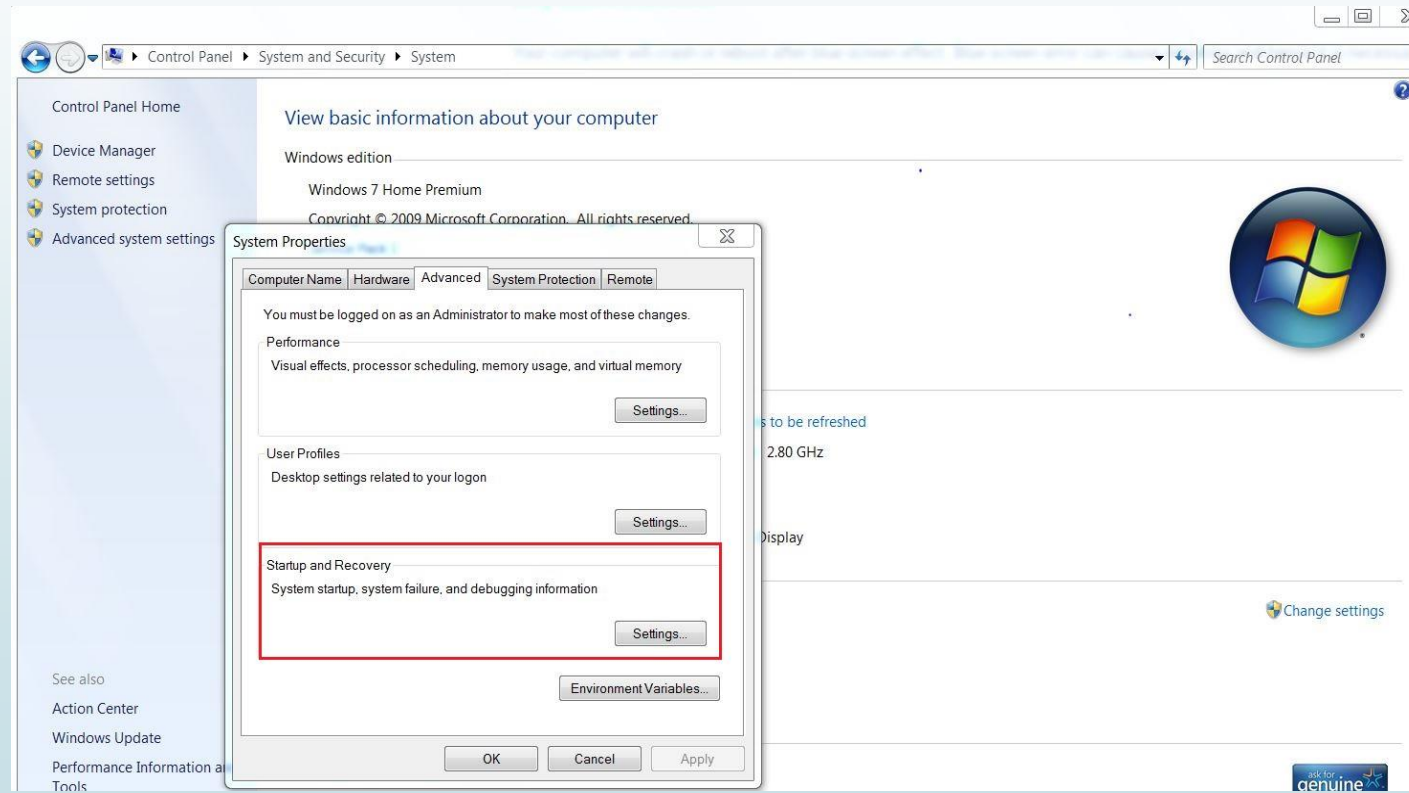
- Go to advanced settings located at sidebar



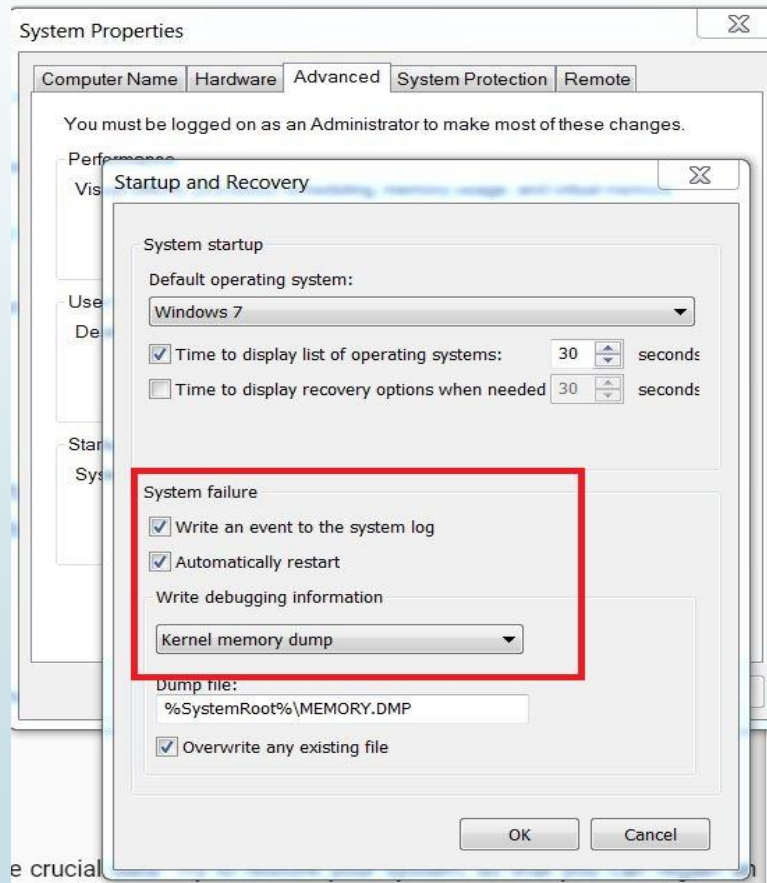
- Click the option “Advance”.



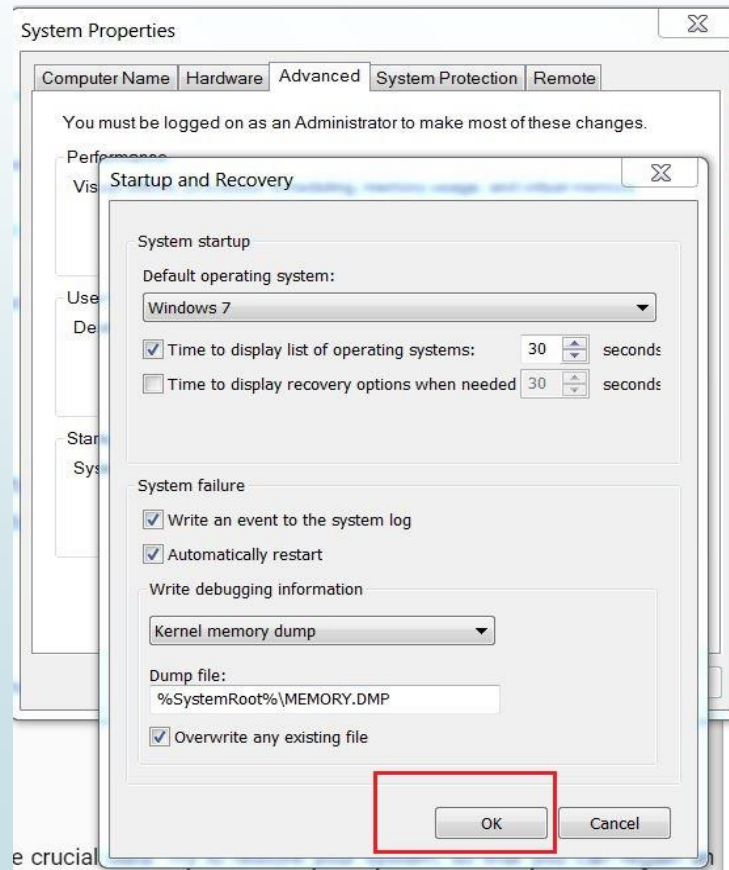
- Now select the “startup and recovery” option under “Startup” bar.



- Undo the Automatic start option from System failure settings.



- Press “ok” and close all tabs.





Alternatively:

If nothing works for you, the error can troubleshoot with help of HP Customer Support There is toll-free [HP Printer Phone Number](#) available that can redirect you to technical specialize team of HP experts who are working 24X7 to solve all technical issue.



Find HP Online:

hp.com/SupportVideos

hp.com/SupportForum



@HPSupport



@HPSupport



@HPSupport