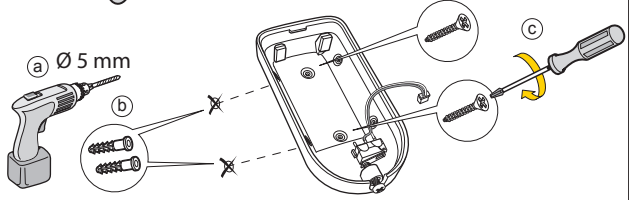
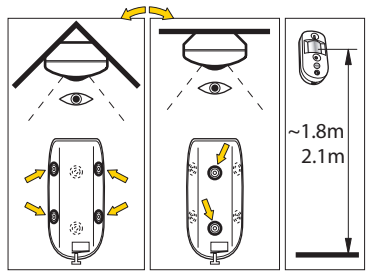
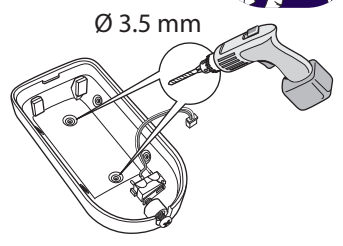
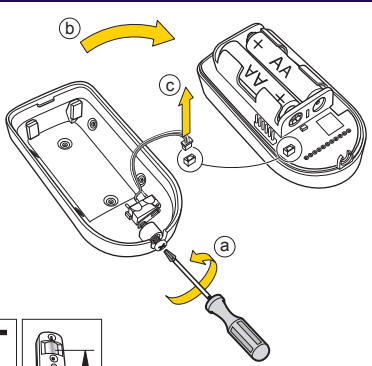
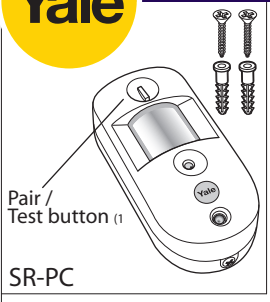




(GB) Installation - (IT) Installazione - (DE) Installation - (NO) Installasjon - (SE) Installation - (DK) Installation.



1) (IT) Associazione/test - (DE) Verbinden/Testen - (NO) Tilkobling/Test - (SE) Para/Testa - (DK) Tilslut/test



(GB) Please see your Yale Smartphone Alarm System Instruction manual for the following: Adding this component to your Alarm, Installing, Changing the batteries, Troubleshooting.

(IT) Si prega di consultare il manuale istruzioni dell'allarme Yale Smartphone Alarm per le seguenti operazioni: Aggiungere questo componente al vostro allarme, Installazione, Sostituzione batterie, Risoluzione dei problemi.

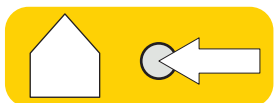
(DE) Bitte beachten Sie Ihren Yale Smartphone Alarm-System Bedienungsanleitung für folgende: Das Hinzufügen dieser Tür / Fenster-Detektor, um Ihren Alarm, Installieren, Batteriewechsel, Fehlersuche.

(NO) Vi refererer til den medfølgende brukermanualen av Yale Smartphone Alarm systemet for følgende informasjon: Legge til tilleggsutstyr, Montere enheter, Bytte batterier, Problemløsning.

(SE) För nedanstående hänvisas till Yale Smartphone Alarm system manualen: Lägga till en komponent till ditt larmsystem, Installation, Batteribyte, Felsökning.

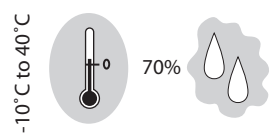
(DK) Se hovedmanualen til Yale Smartphone Alarm System, som indeholder vejledning i flg.: tilføj komponenter, installation, batteriskift, fejlfinding.

(GB) Environment - (IT) Ambiente - (DE) Umgebung - (NO) Miljø - (SE) Miljö - (DK) Miljø.



Housings ABS/polycarbonate

(IT) Involucro di TUTTI i dispositivi ABS/polycarbonato
(DE) Alle Geräte, Gehäuse ABS Polycarbonat
(NO) ALLE komponenter. Deksel av ABS/polykarbonat
(SE) Alla komponenter, Plasthölje ABS/Polycarbonat
(DK) Alle komponenter, ABS/polycarbonat



RoHS

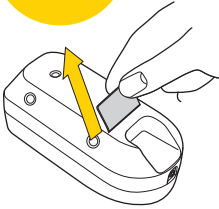
An ASSAABLOY Group brand

ASSA ABLOY

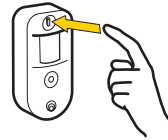
SR-PC-MI-V03



(GB) How does it work - (IT) Come funziona - (DE) Wie es funktioniert -
 (NO) Hvordan virker det - (SE) Hur fungerar det - (DK) Hvordan virker det



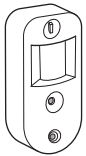
Remove Battery strips (1)



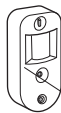
Pair and test planned location for stable radio performance (2)

(1 (IT) Rimuovi strisce batteria - (DE) Entfernen der Batteriefolie - (NO) Fjern papirstripen på batteriet -
 (SE) Ta bort batterisparfliken - (DK) Fjern batteri-strimmel

(2 (IT) Associazione nuovo dispositivo. Esegui un test della posizione programmata dei componenti -
 (DE) Verbinden neuer Geräte. Testen Sie Ihren gewählten Standort - (NO) Tilkobling av ekstrastyr. Test for stabile
 trådløse signaler - (SE) Para in nytt tillbehör. Test radiostyrka - (DK) Tilslut ekstrastyr. Test for stabil trådløs
 forbindelse

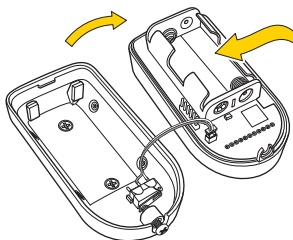
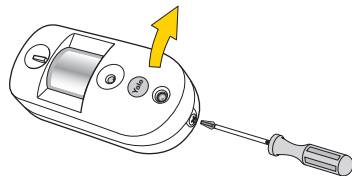
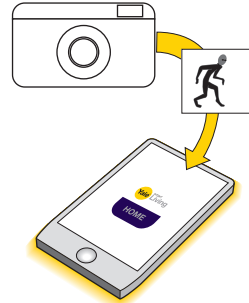


Radio 2,4GHz



110°

~12m



2 x 1.5v AA

