



# Cloud Connector to Dropbox for Confluence

1.7.1

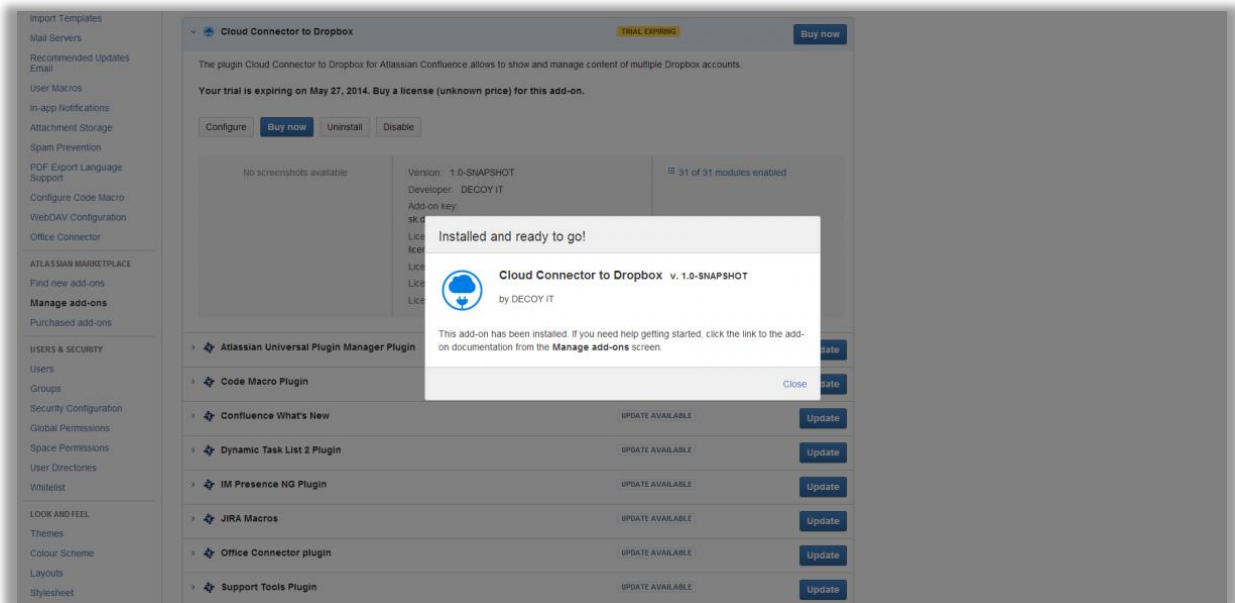
# INTRODUCTION

The plugin Cloud Connector to Dropbox for Atlassian Confluence allows you to easily show and manage content of multiple Dropbox Accounts.

# ADMINISTRATION GUIDE

## INSTALLATION

The process of installing is as same as for other plugins and documentation to it is provided by [Atlassian](#).



*Image 1 Installation*

## ADMINISTRATION

It is very easy to configure plugin. Administration page allows you to set up dropbox accounts that you want to use on pages. Just click on Configure in plugin detail or click on Dropbox Configuration in the left panel of Confluence Admin and you will be redirected to the administration page.

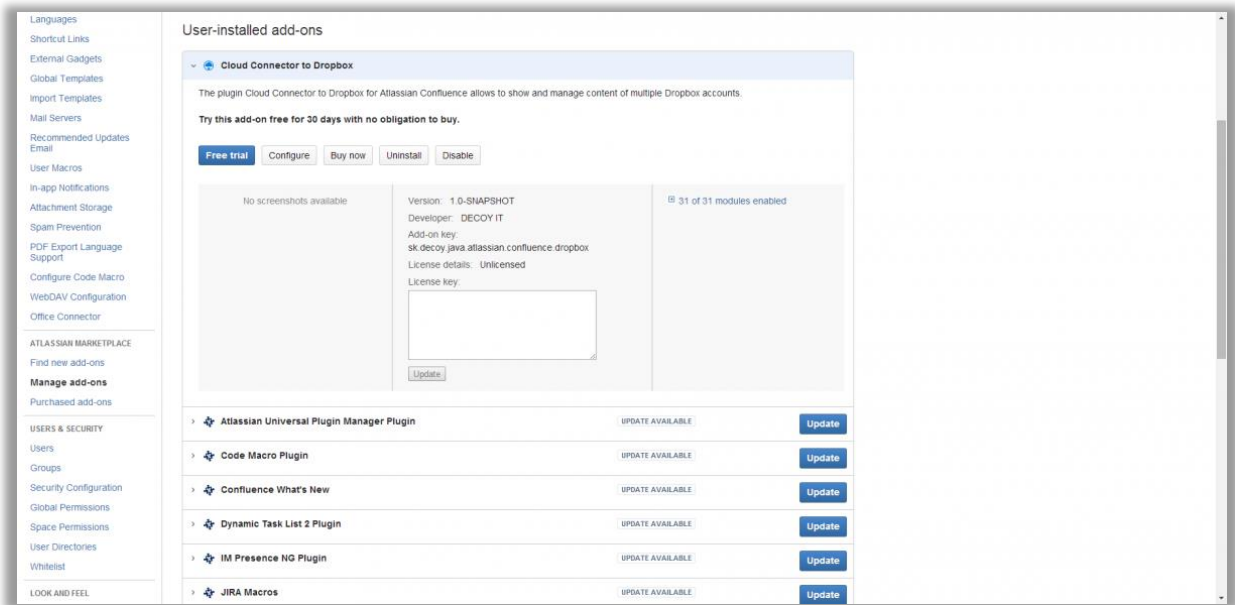


Image 2 Plugin administration

## EDIT LICENSE

If you are using UPM of version lower than 2.0 you will need to set the license at the license page. After click on the button from configuring page you will be redirected to the page with all details where you can add/edit the license. If your UPM is newer then you can change the license only in plugin details.

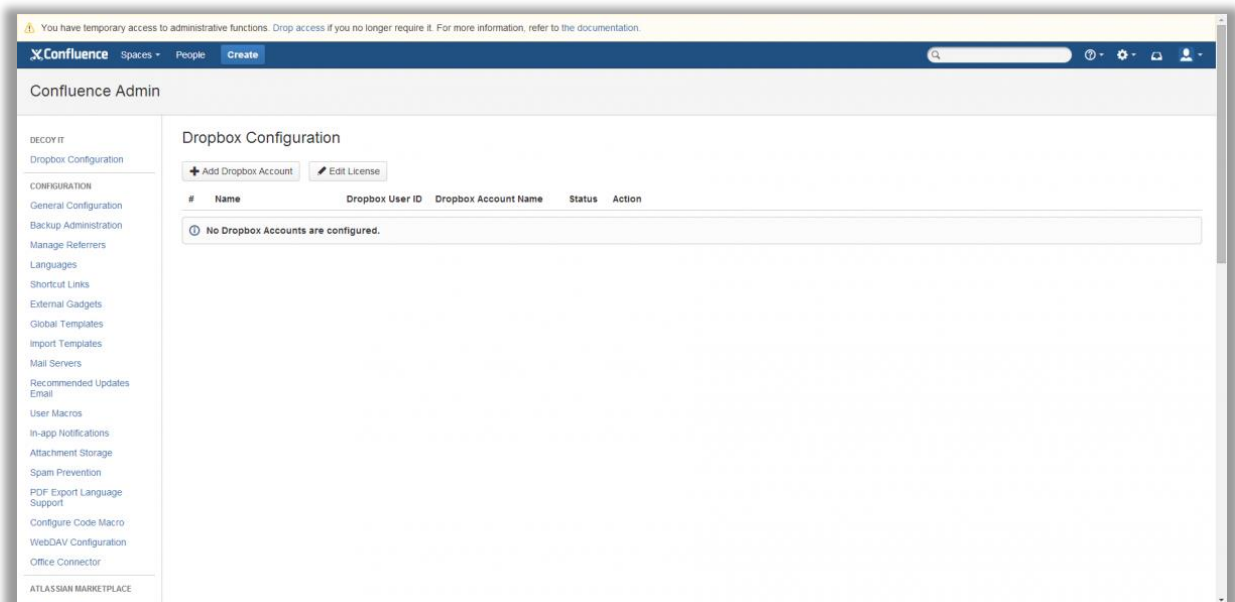


Image 3 Edit license

## ADD DROPBOX ACCOUNT

You need to fill in following fields to connect your Confluence instance with Dropbox Account:

- **Name** - A name of your dropbox account that will be used in the Confluence
- **Dropbox Access Token** - A string that allows Confluence to communicate with your Dropbox Account.

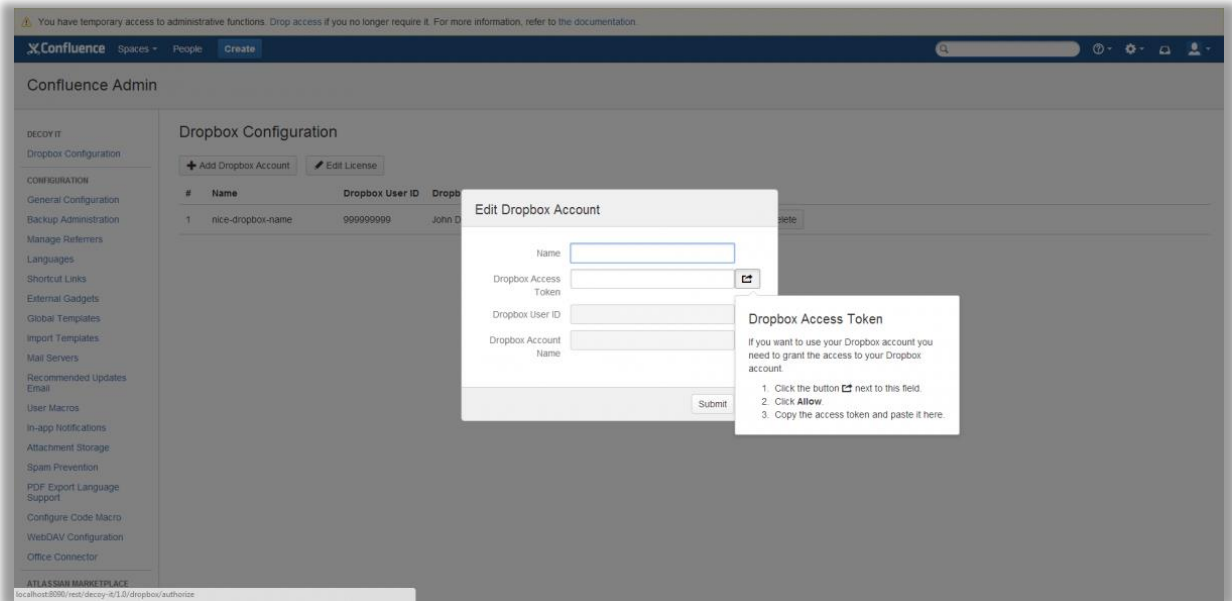


Image 4 Add Dropbox account

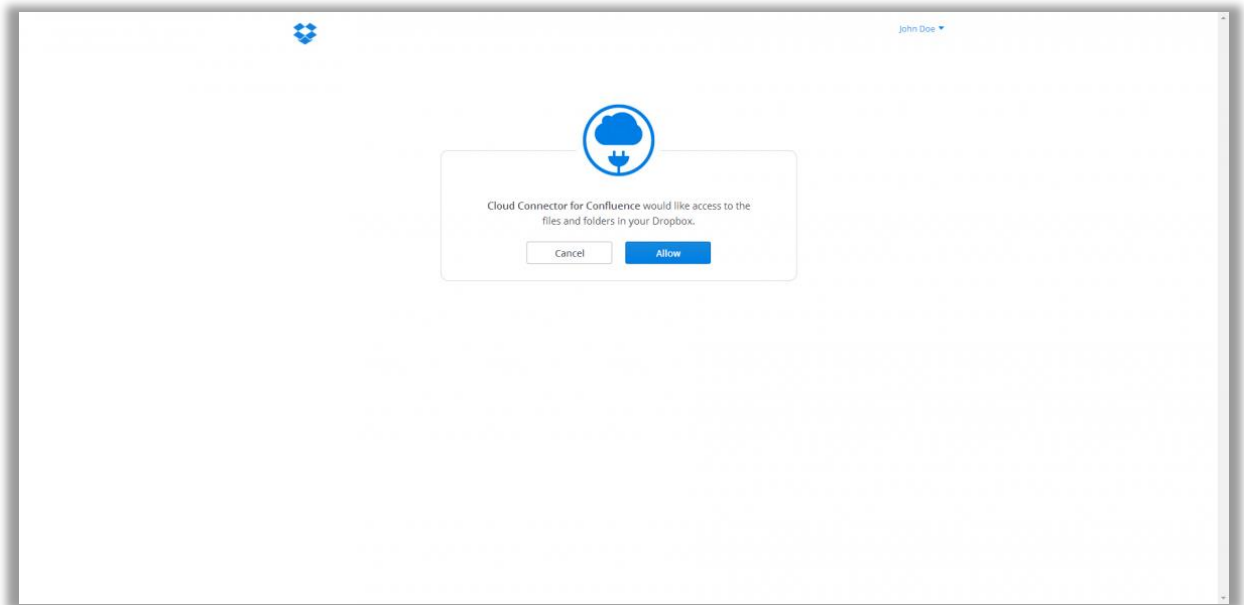
If the authorization of your Confluence instance in Dropbox is successful then you will see the information about your Dropbox Account in following fields:

- Dropbox User ID
- Dropbox Account Name

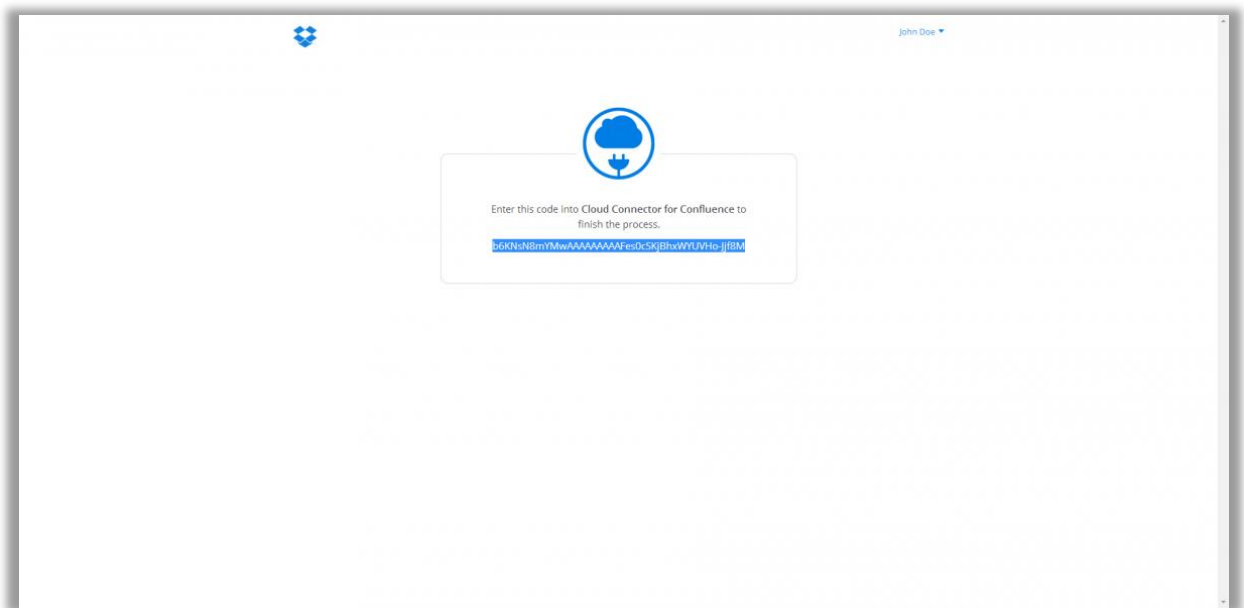
## HOW TO RETRIEVE DROPBOX ACCESS TOKEN?

You need to click on the button next to the field Dropbox Access Token and follow the instructions in the popup.

1. Click the button
2. Sign in Dropbox if you are not.
3. Click on Allow
4. Copy the string with access token bellow the text "Enter this code into Cloud Connector to Dbx to finish the process."



*Image 5 Allowing access to Dropbox content*



*Image 6 Dropbox Access Token*

## EDIT ACCOUNT

Simply click on button **Edit** and you can change the name or access token of Dropbox Account.

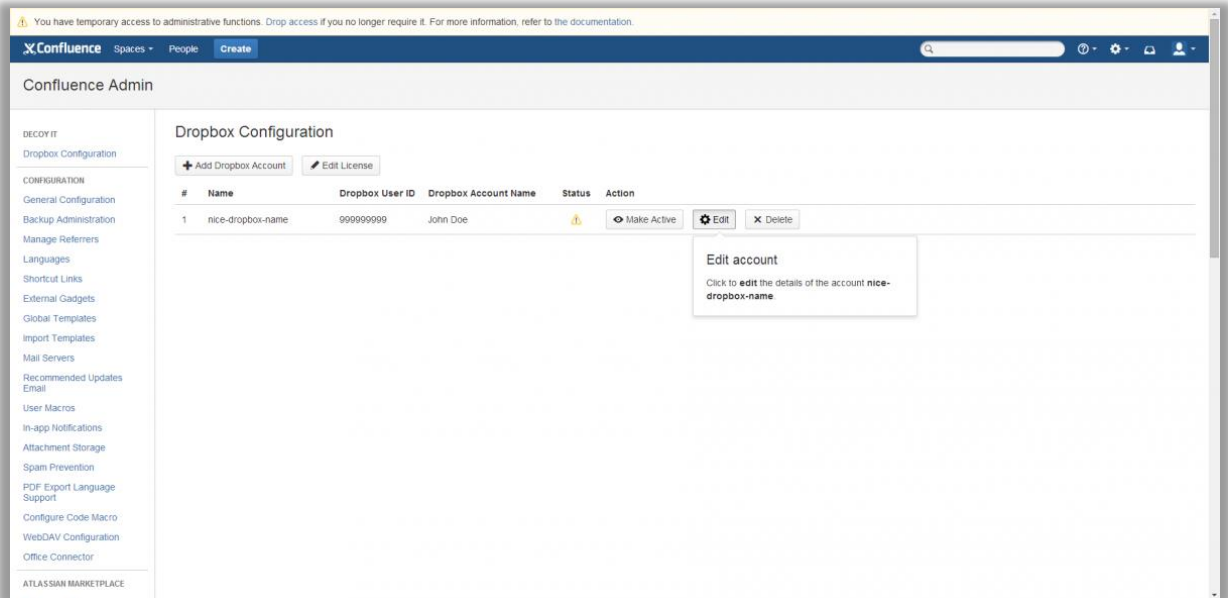


Image 7 Edit Dropbox Account

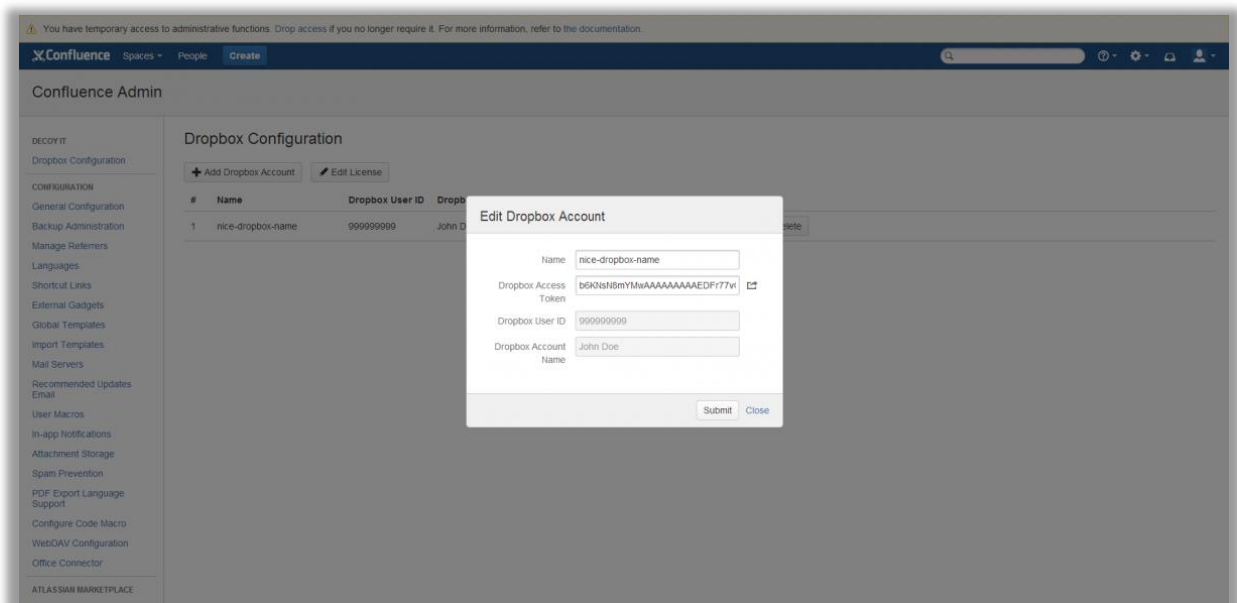


Image 8 Edit Dropbox Account Dialog

## DELETE ACCOUNT

If you want to delete an account just click on **Delete** button that belongs to an account and then you need to confirm the deletion of selected Dropbox account in the popup.

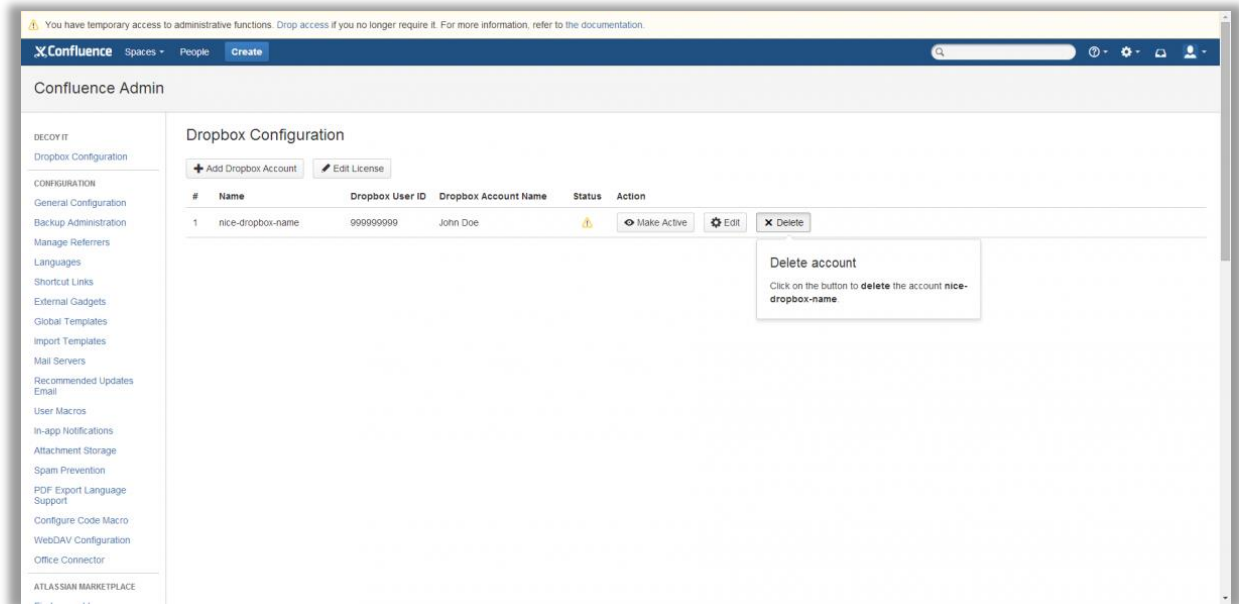


Image 9 Delete Dropbox Account

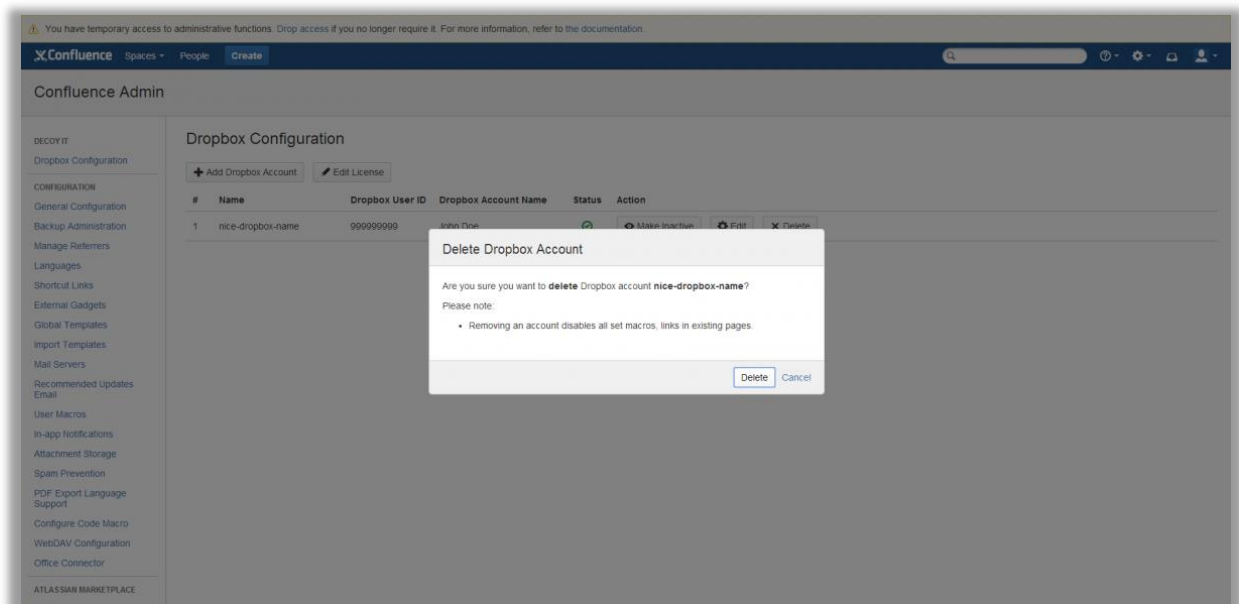


Image 10 Delete Dropbox Account Dialog



## ACTIVE/INACTIVE

Each account can be in active or inactive mode. You do not need to remove an account if you do not want to use it. Thus you can make it as inactive and it will not appears in the macro, link browser, image dialog.

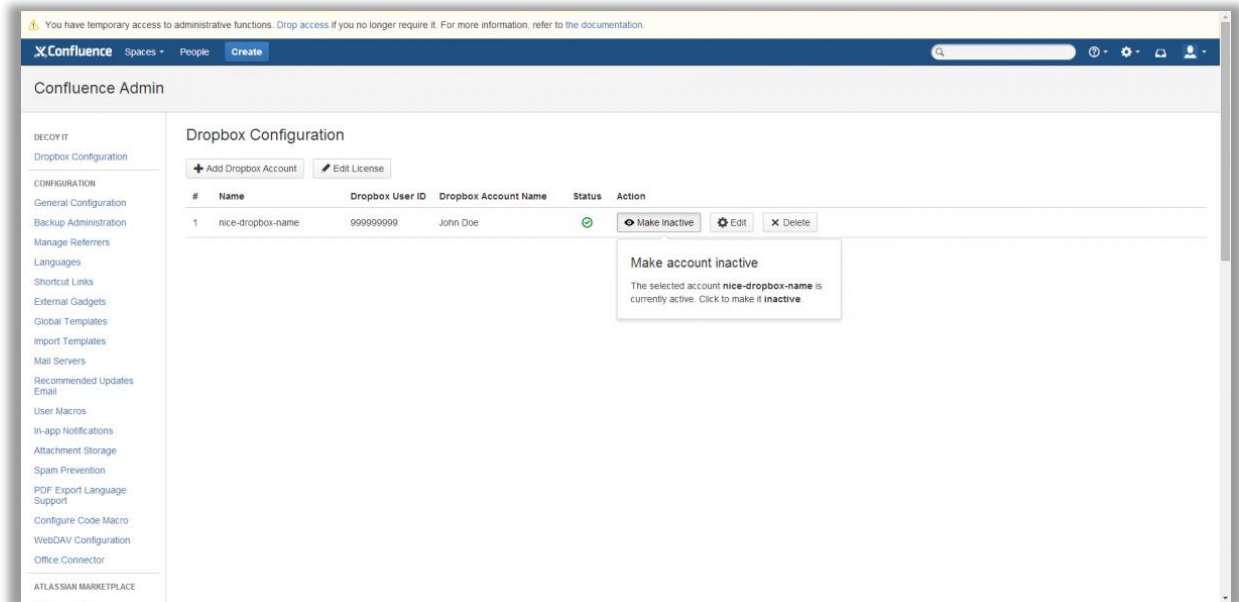


Image 11 Make account inactive

Freshly created account is in inactive mode. So, don't forget to make it active if you want to use it.

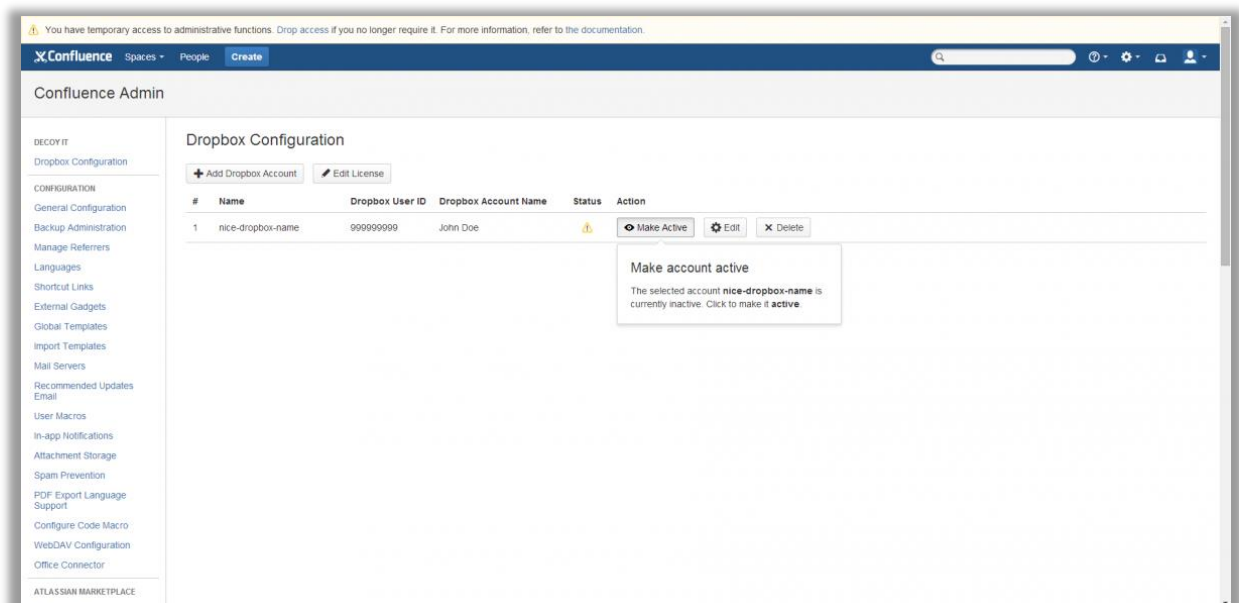


Image 12 Make account active

# USER'S GUIDE

## DROPBOX INTEGRATION

To show or manage content of configured Dropbox Accounts you can do outside of Confluence Administration. When you are in Edit mode of a page you can use Macro from Macro Browser, Link Browser or Image Dialog.

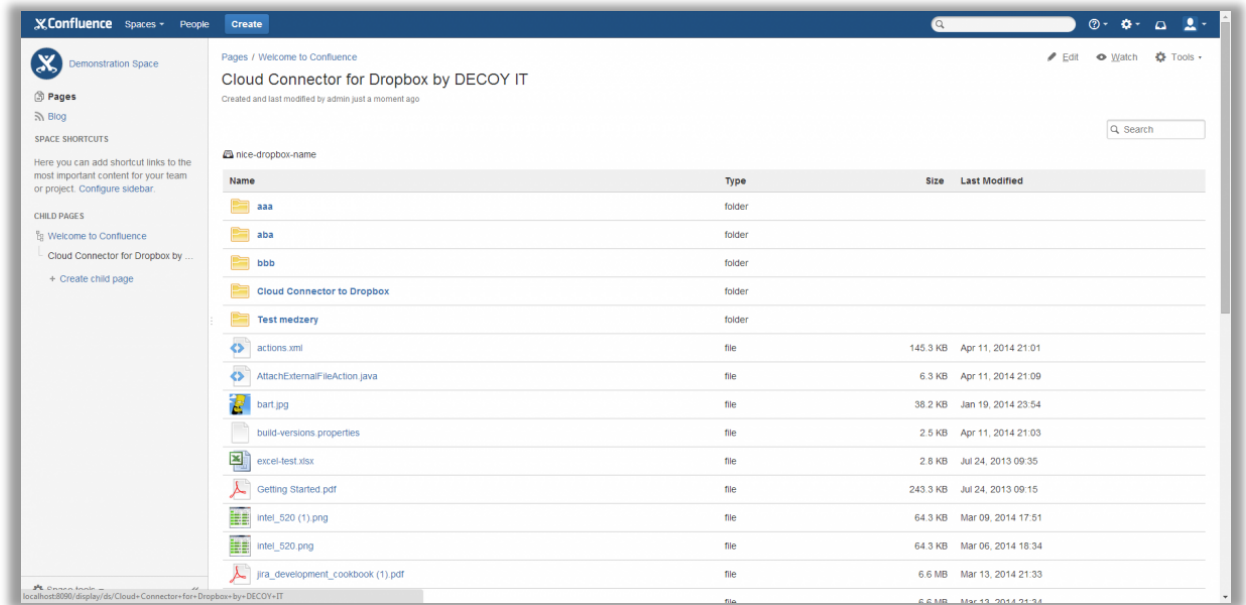


Image 13 Rendered Dropbox content

## MACRO

Macro allows you to place a container with Dropbox content into a page. Such macro is displayed to every user that has rights to a page. The displayed Dropbox content can be configured in Macro Dialog.

How to add a macro into a page:

1. Open the Macro Browser or just type ! into text editor and choose **Insert Other Media**.
2. Pick the **External Content** category from left panel
3. Choose the macro **Cloud Connector to Dropbox**
4. Adjust the configuration
5. Click Insert

## Macro Parameters:

- **Title** - Text that will be shown above the Dropbox content
- **Dropbox Account** - List of Dropbox Account that will be listed in the macro. If no account is selected that all active accounts will be listed.
- **Folder** - Set the default Folder, that will be shown when the macro is loaded. If more accounts are chosen then home folder "/" will be used as a default value.
- **Set Root Folder** - Mark the chosen folder as root. You cannot traverse above that folder, only traverse down.
- **Allow Traversing** - Allows moving through folders to reach other files or folders.
- **Allow Uploading** - Allows to upload files to the shown Dropbox Account.
- **Allow Searching** - Allows to search on the shown Dropbox Account.
- **Width** - Number in pixels that defines width of the table. If nothing is set then the table will have dynamic width.
- **Height** - Number in pixels that defines height of the table. If nothing is set then the table will have dynamic height.

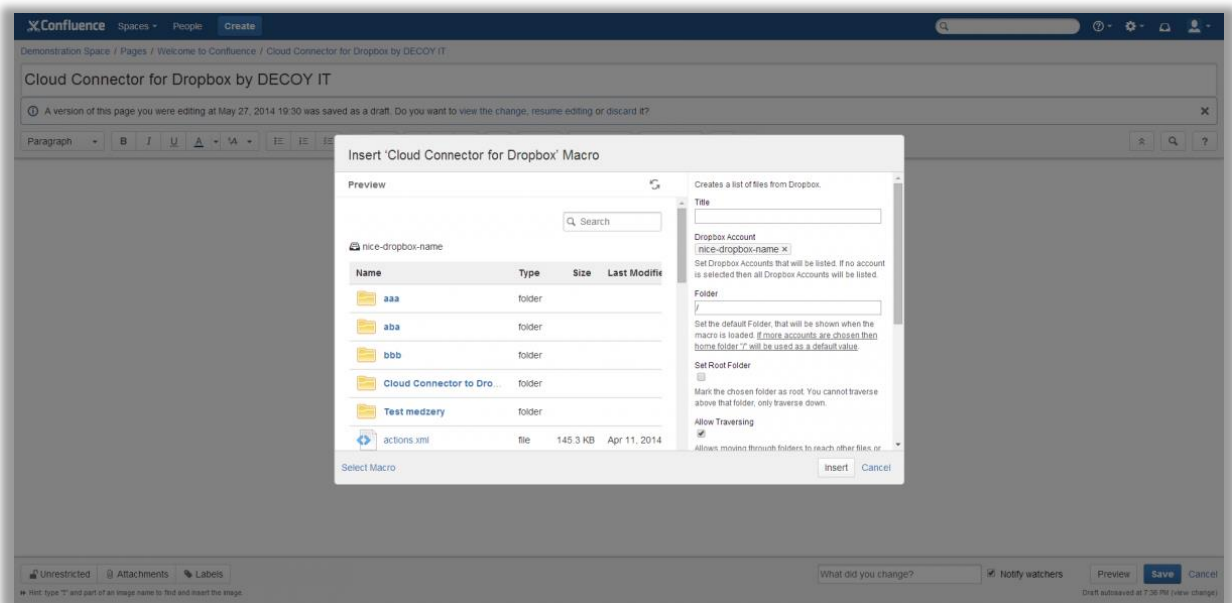


Image 14 Macro

## LINK BROWSER

With Link Browser you can easily put links to a file from Dropbox.

1. Open Link Browser
2. Choose the Dropbox from left panel
3. Select the file whose link you want to insert into page
4. Click Insert

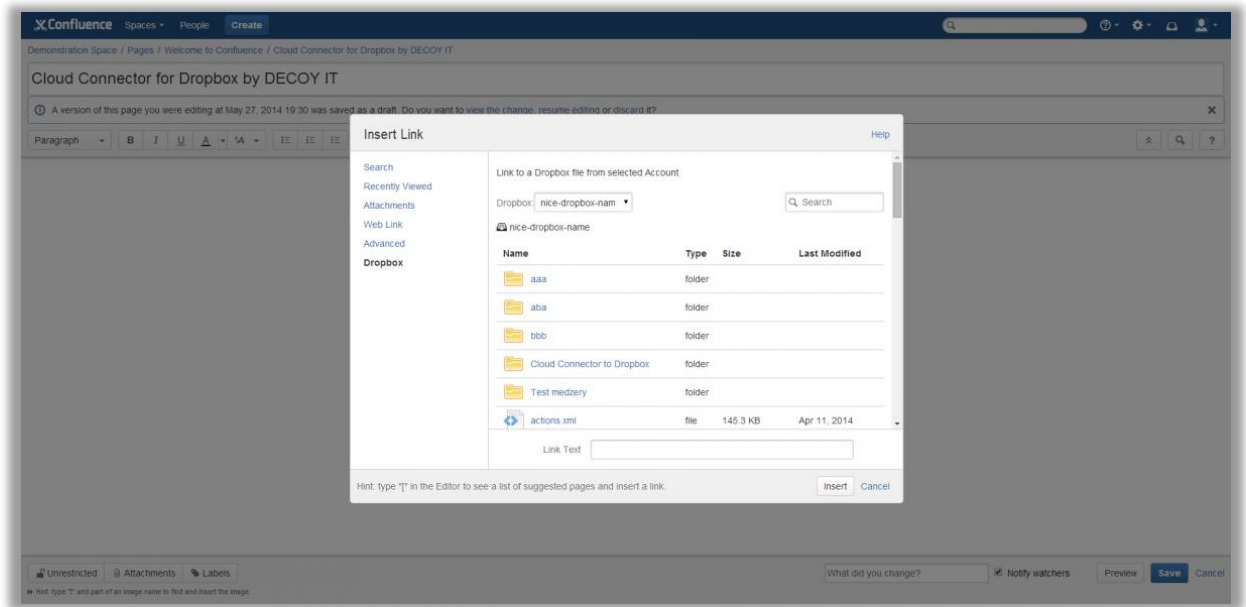


Image 15 Link Browser extension

## IMAGE DIALOG

Image Dialog allows you to insert images from your configured Dropbox Accounts.

1. Open Image Dialog
2. Choose the Dropbox from left panel
3. Select the image you want to insert into page
4. Click Insert

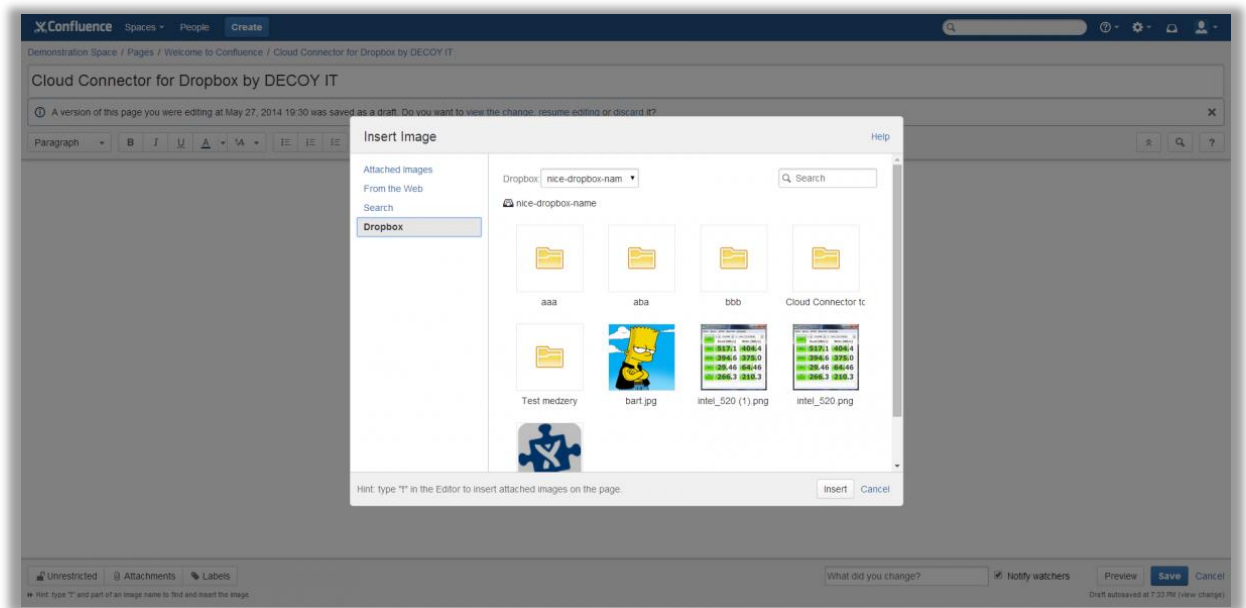


Image 16 Image Dialog extension

## SUPPORT

If you spot an incorrect behaviour of this add-on or need more detailed guidance how to use this plugin, please, contact at [support@decoy.sk](mailto:support@decoy.sk).

We are also looking for your feedback, opinions and ideas on how we can improve this add-on. So, feel free to contact us on above email address.