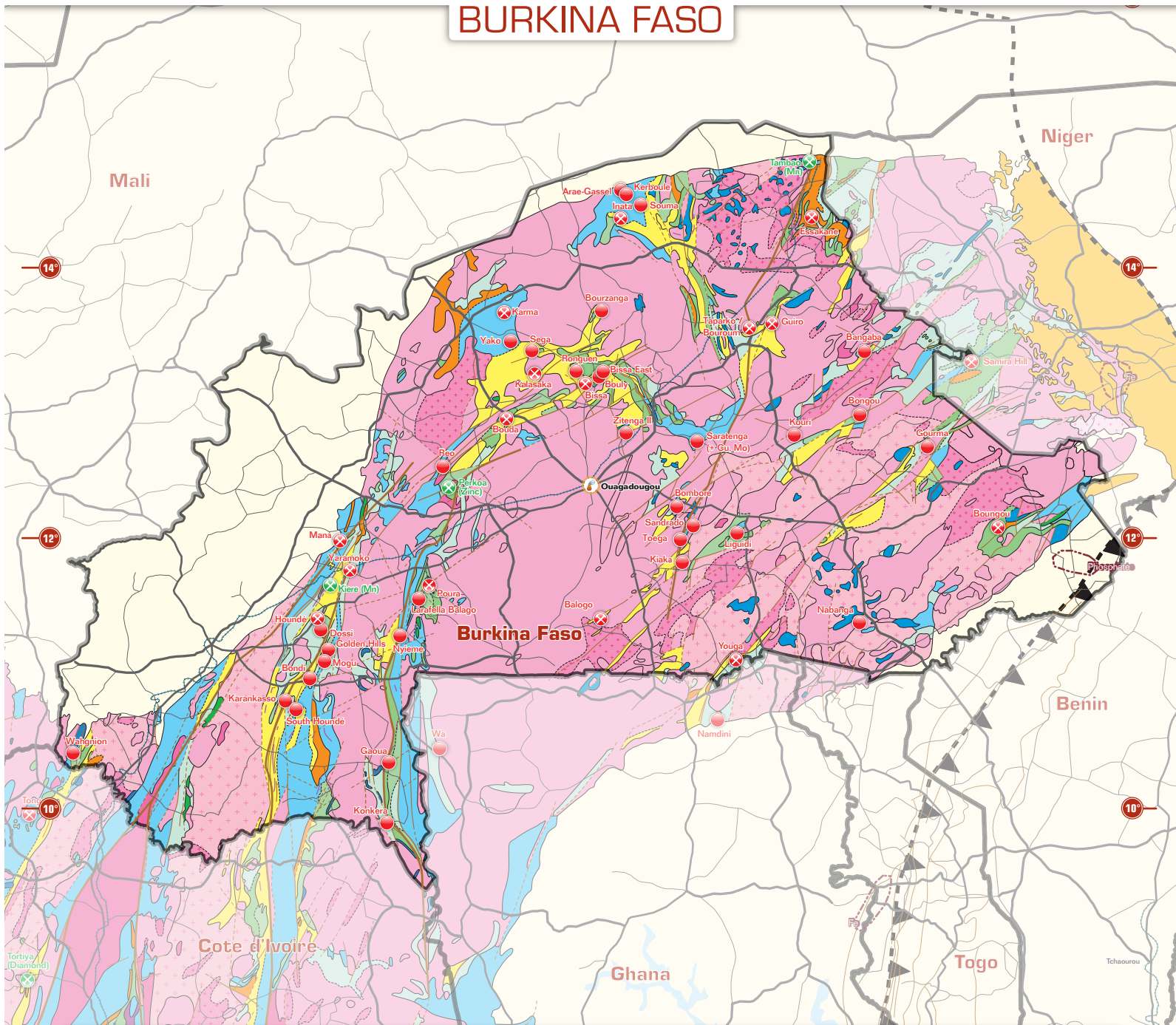


# BURKINA FASO



*Your feet  
on the ground  
in Africa*



- Geological boundary certain
- Geological boundary inferred
- Fault certain
- Fault inferred
- Thrusts
- GOLD MINES**
- Existing
- Closed
- Gold resources/ projects
- OTHER MINERALS**
- Existing mines
- Closed mines
- Projects
- Mineral fields
- Country Borders
- Seaside
- Roads
- Minor roads
- Railway
- Sems Offices

### POST-EBURNEAN ANOROGENIC DOMAINS

- Basic-ultrabasic complexes (Freetown, Guinea)
- Cretaceous to Recent
- Upper Proterozoic to Paleozoic

### EBURNEAN OROGENIC DOMAIN

#### LOWER PROTEROZOIC TERRANES (2.4 - 1.6 Ga.)

- Plutonic rocks**
- Basic-ultrabasic complexes
  - Leucogranite
  - Undifferentiated granitoids

#### Volcanic and fluviodeltaic formations

- Lithostructural assemblages (D2 and D3 deformation phases)**
- Fluviodeltaic: sandstone, conglomerate, argillite (Tarkwaian)
  - Plutonic-volcanic assemblage: minor volcanic rocks
  - Undifferentiated volcanics, volcanosedimentary rocks
  - Komatiitic to tholeiitic basalts
  - Rhyodacitic to rhyolitic volcanic rocks, chert (b), graphitic horizons
  - Andesitic volcanic rocks, chert (b), graphitic horizons
  - Basic volcanic rocks, chert (b), Mn levels (c)

#### Flysch-type formations with minor volcanic rocks -

- Lithostructural assemblage (D1 to D3 deformation phases)**
- Carbonates felsic volcanic rocks
  - Felsic volcanoclastic rocks, dykes; chert (b), manganese levels (c)
  - Flysch-type: sandstone to argillite (graphitic, conglomeratic levels)

### Horizon Markers (B2, B1)

- Tourmaline-bearing sandstone and conglomerate
- Chert and quartzite levels
- Manganese-rich levels: quartzite, gondite, phyllite

### ARCHEAN AND/OR PROTEROZOIC GRANITIC GNEISS COMPLEXES

#### DEFORMED BY THE EBURNEAN OROGENESIS

- Granitic, migmatitic and undifferentiated gneiss
- Granitic, migmatitic and undifferentiated gneiss
- Granite, gneiss, and migmatitic gneiss complexes

### PRE-EBURNEAN OROGENIC DOMAIN

#### ARCHEAN - LEONIAN (3.5 - 2.9 Ga.) / LIBERIAN (2.9 - 2.5 Ga.)

#### Plutonic rocks

- Undifferentiated plutonic rocks (Leonian to Late-Liberian)

#### Greenstone belts and ironstone formations

- Ironstone formation (meta-sedimentary, meta-basic rocks associated)

#### Basic and ultrabasic formations

- Basic and ultrabasic formations

#### Gneiss complexes

- Migmatitic and undifferentiated gneisses
- Granulitic gneiss "basement"

GEOLOGICAL DATA FROM BRGM - LAY/LONG WGS84  
Map drafted by Kwaku Owusu-Ansah  
All rights reserved SEMS EXPLORATION  
2020 - 6th edition - info@sems-exploration.com

www.sems-exploration.com



**THE AFRICAN GEOLOGICAL  
CONSULTANCY GROUP**