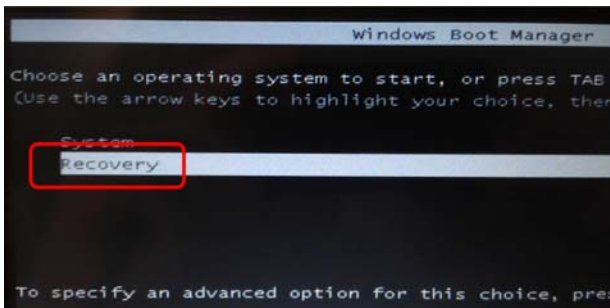


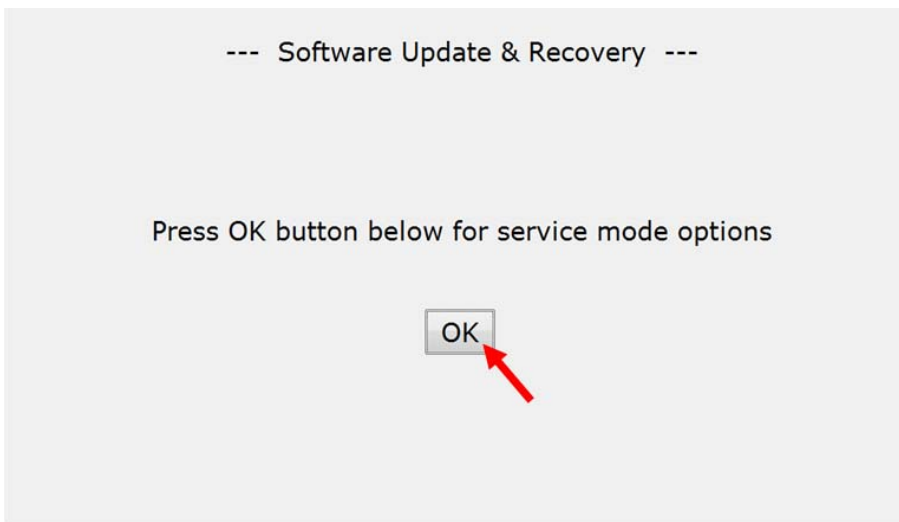
Instruction to recover the System Image for the MFP2GO controller.

Attach a USB keyboard to the MFP2GO controller

Power on the controller and select 'Recovery' with arrow keys and press ENTER



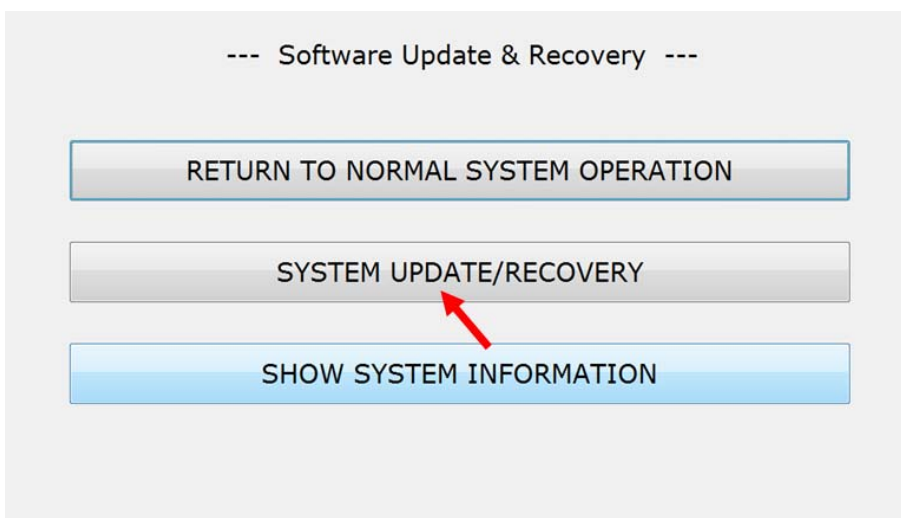
Select 'OK'



Insert the USB memory stick, containing the new System Image file, in the left side of the MFP2GO controller (not necessary if reinstall of current version is needed)

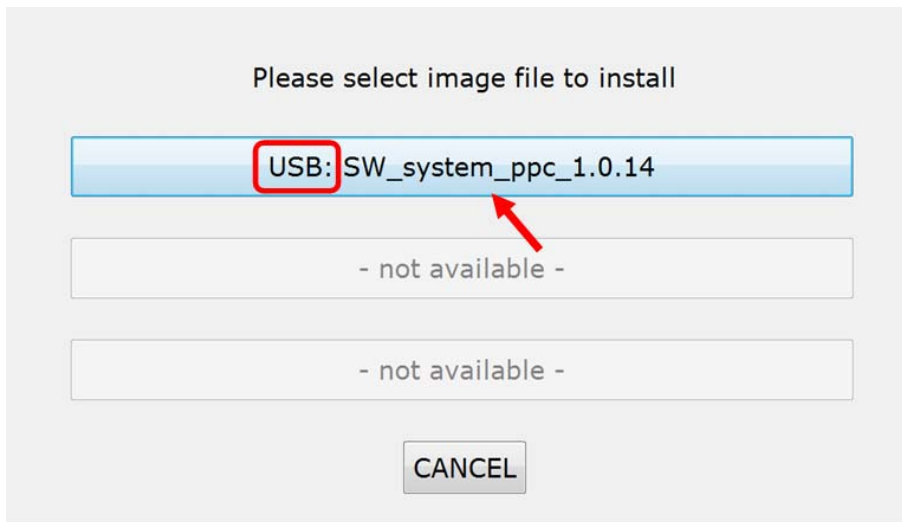


Press "SYSTEM UPDATE/RECOVERY"

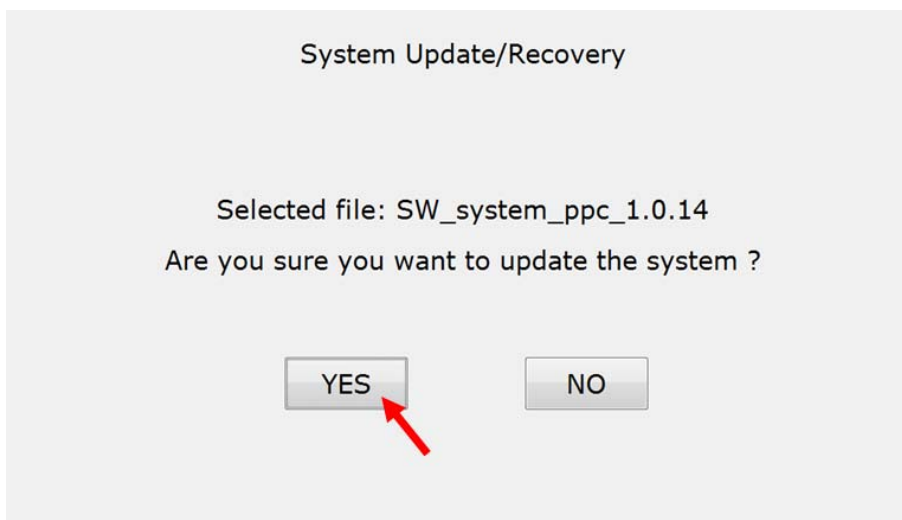


Press on the system image to install

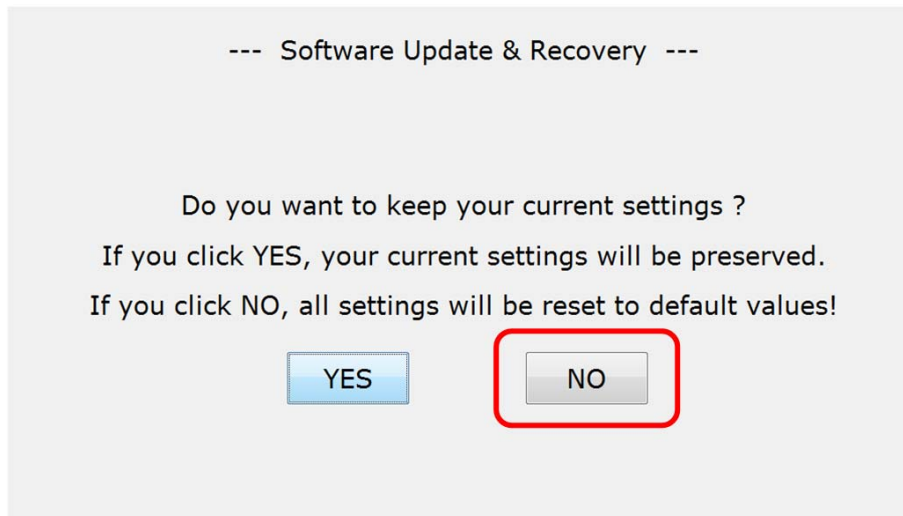
NB: if installing from memory stick then 'USB:' will be showed in front of the system version



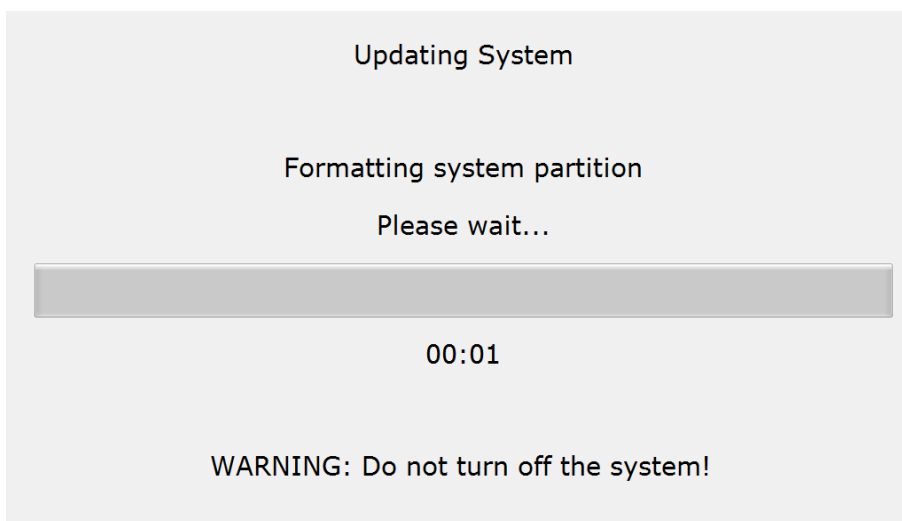
Press "YES", to start update of the MFP2GO controller



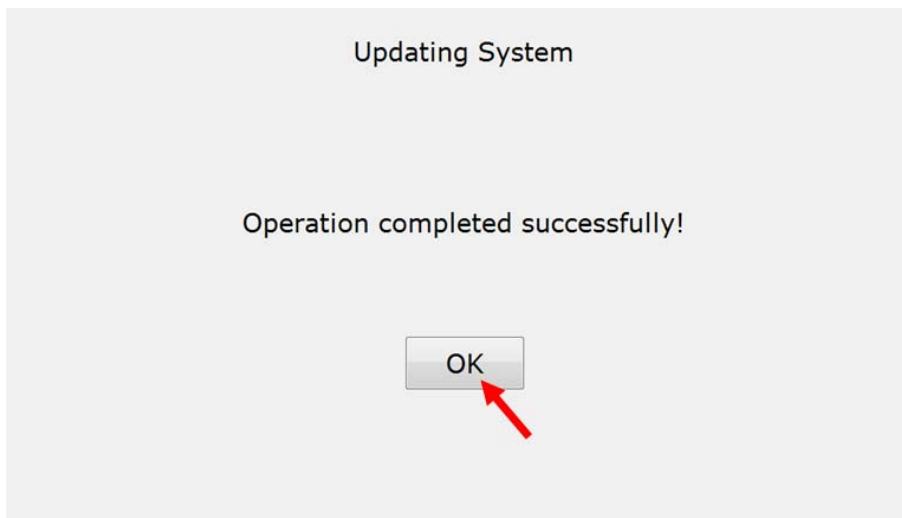
Press **"NO"**, to make sure that no previous settings are saved



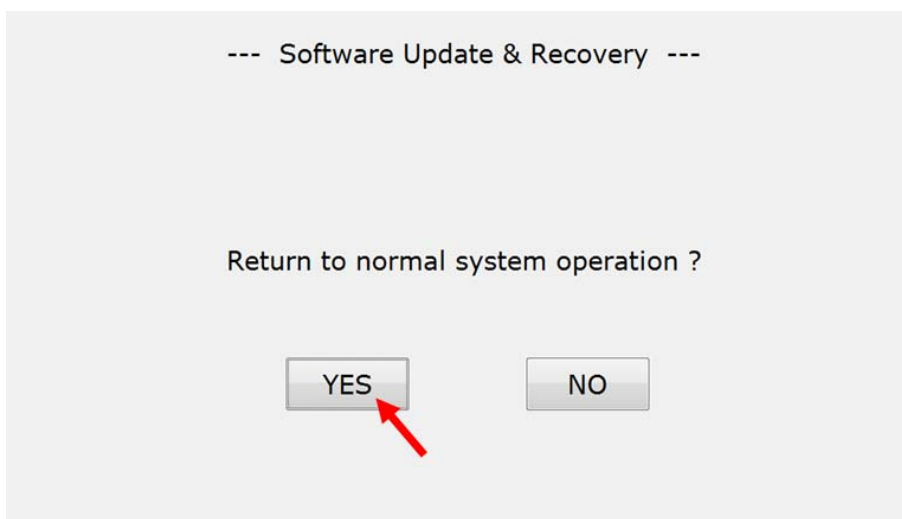
Please wait while system is being updated



Press "OK" when update is completed



Press "YES" to reboot MFP2GO controller in normal mode



Remove USB memory stick and press "OK"

Please remove the USB key before continuing

OK

