

Instruction to update the System Image for the MFP2GO controller.

Click on the link "MFP2GO System Image" to download the file.

Download any version

For specific versions for you scanner model please select your scanner from the list.

MFP2GO 1.0.13



[MFP2GO System Image](#)



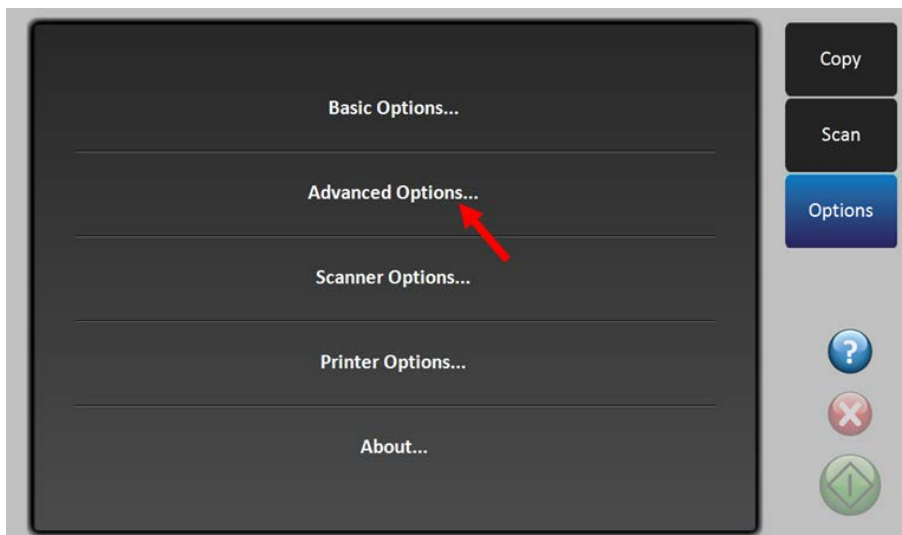
[Release Notes](#)

Version 1.0.13

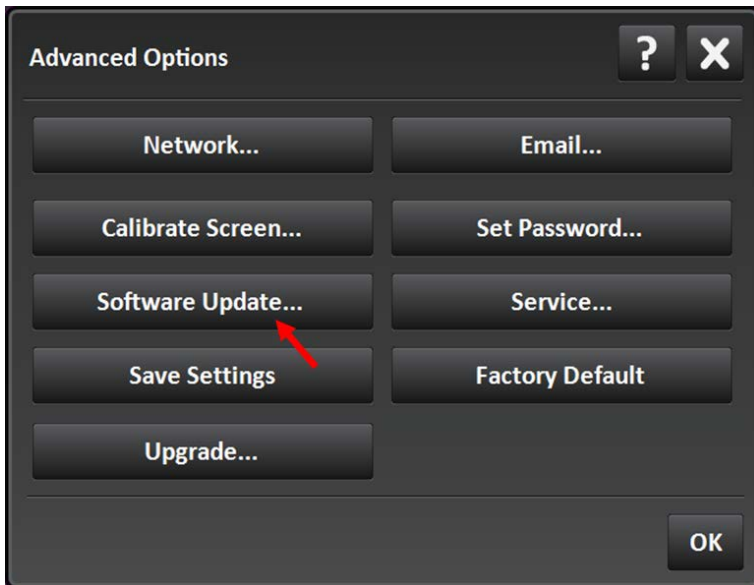
Released September 2012

The downloaded file should be saved to a USB memory stick

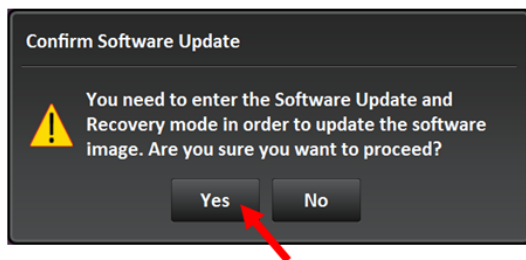
Power on the MFP2GO controller and enter the "Advanced Options..." dialog in the "Options" tab



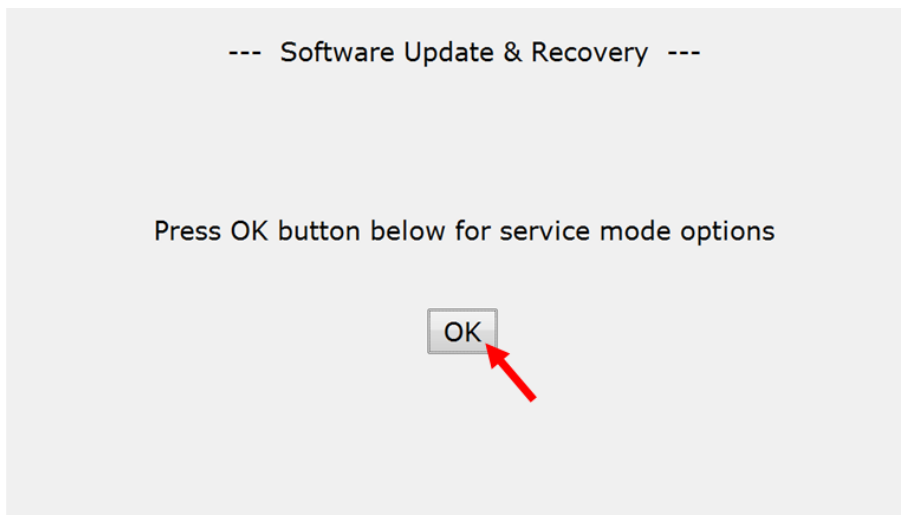
Press "Software Update..."



Press "Yes" to confirm Software Update and Recovery mode



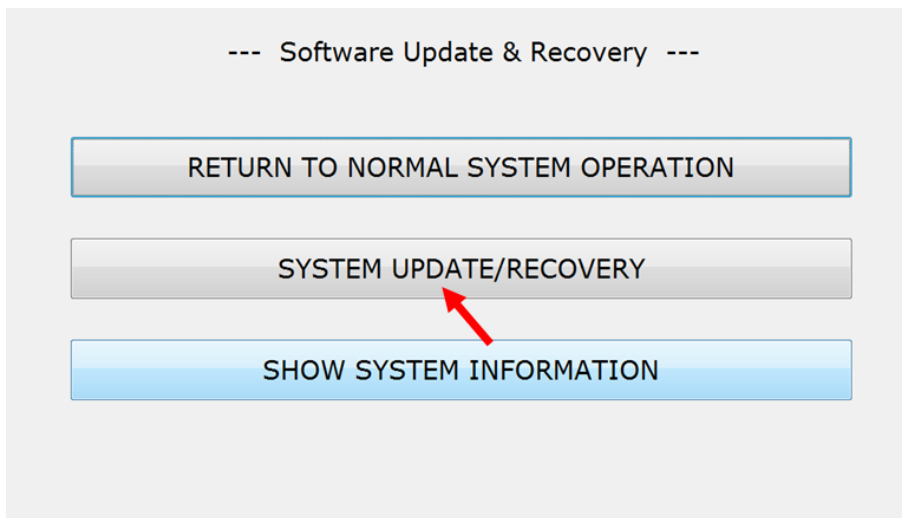
After the MFP2GO controller have rebooted press "OK"



Insert the USB memory stick, containing the new System Image file, in the left side of the MFP2GO controller

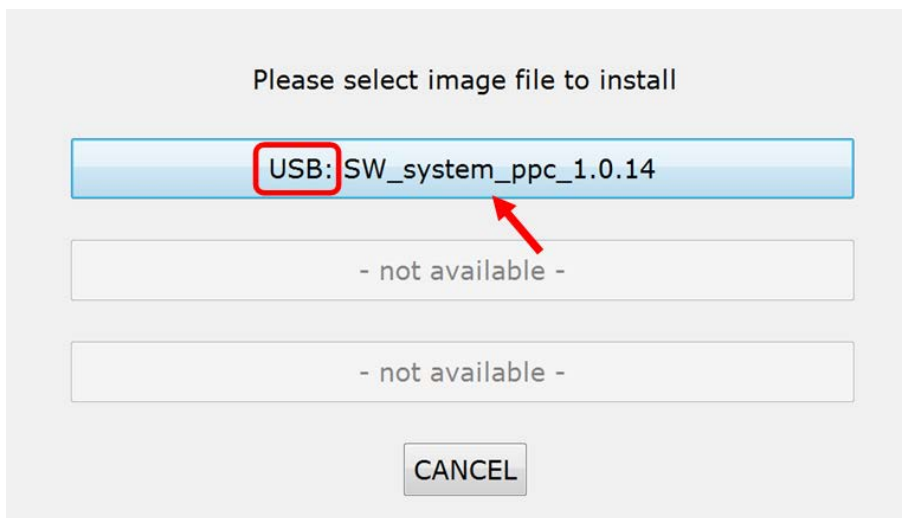


Press "SYSTEM UPDATE/RECOVERY"



Press on the system image to install

NB: Make sure USB: is showed in front of the system version




Press "YES", to start update of the MFP2GO controller

System Update/Recovery

Selected file: SW_system_ppc_1.0.14

Are you sure you want to update the system ?



Press "YES", if current settings in the MFP2GO controller should be saved

Press "NO", if the MFP2GO controller should use default values

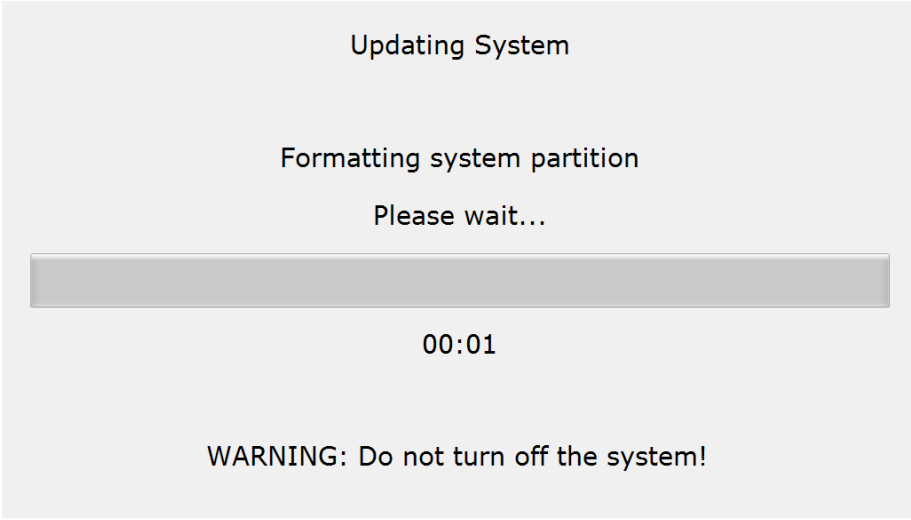
--- Software Update & Recovery ---

Do you want to keep your current settings ?

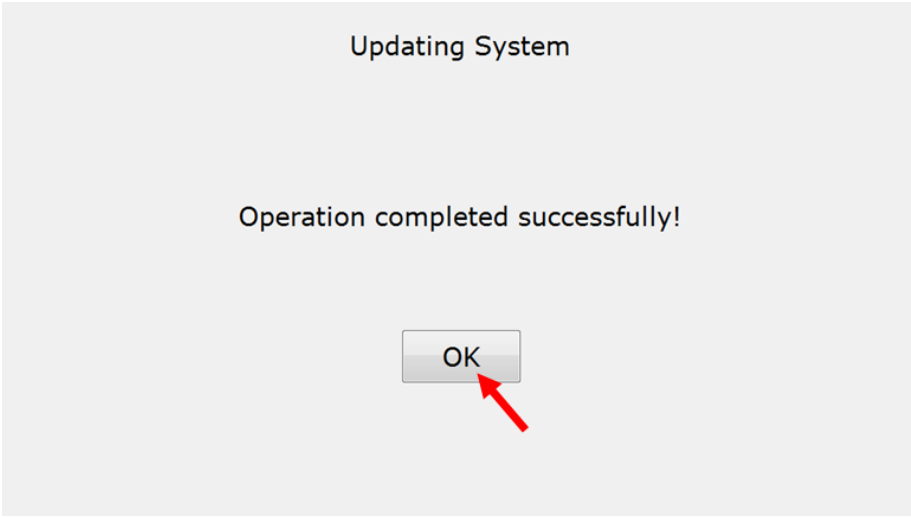
If you click YES, your current settings will be preserved.

If you click NO, all settings will be reset to default values!

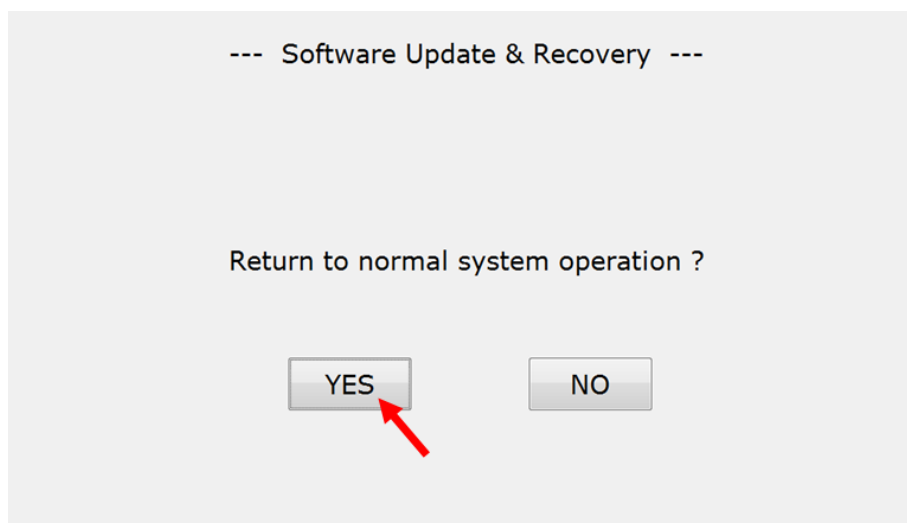
Please wait while system is being updated



Press "OK" when update is completed



Press "YES" to reboot MFP2GO controller in normal mode



Remove USB memory stick and press "OK"

