

User Guide

4

Model: HD Apeiron/42, SA61A



Contents

| | |
|---|-----------|
| About this Guide | 5 |
| Getting to Know your Scanner | 6 |
| Front..... | 6 |
| Back..... | 6 |
| Scanner and software installation | 7 |
| Connect the touchscreen to the PC | 7 |
| Download and install software | 7 |
| Connect the USB3 interface cable to the scanner | 7 |
| Connect the USB3 interface cable to the PC..... | 7 |
| Software Installation Wizard..... | 8 |
| First time opening Nextimage Apeiron software..... | 10 |
| Other prompts | 13 |
| Software | 14 |
| Before scanning | 14 |
| After scanning | 14 |
| Setting the input size | 15 |
| Setting the direction of light source | 15 |
| Scanner height adjustment..... | 16 |
| Scanner speed control | 16 |
| Scan destination, File Type, Name, Format | 17 |
| Maintenance | 17 |
| Cleaning..... | 17 |
| Firmware | 18 |
| Upgrading firmware | 18 |
| Appendix | 19 |
| Troubleshooting..... | 19 |
| Assistance..... | 19 |
| Important Safety Instructions | 19 |
| Regulations | 20 |
| Manufacturer | 22 |
| Details of Electrical Equipment..... | 22 |

This guide assumes that you have already gone through and followed the instructions in the:

2 Unpacking Guide

3 Assembly Guide

The guides are also available online at: <https://contex.com/support/hd-apeiron>

About this Guide

This user guide applies to the following model:

| Model | Model Number | Description |
|---------------|--------------|----------------------|
| HD Apeiron/42 | SA61A | Contact-free scanner |



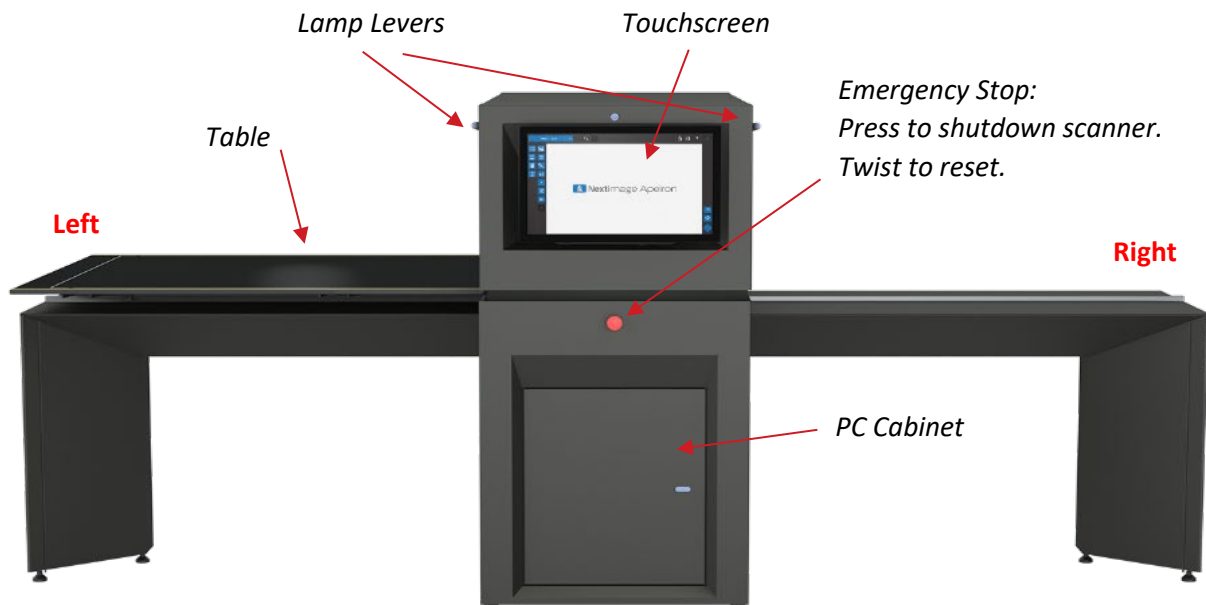
ENERGY STAR® compliant

This guide explains how to install, operate and maintain your contact-free scanner.

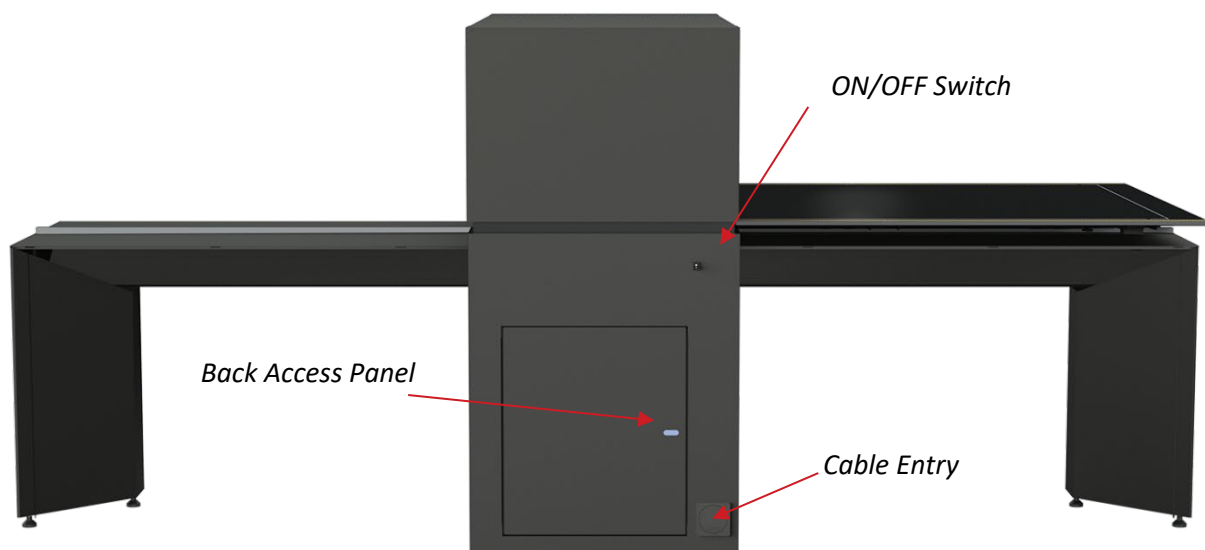
The guide assumes basic knowledge of your computer and operating system.

Getting to Know your Scanner

Front



Back



Scanner and software installation

Connect the touchscreen to the PC

1. Connect the Touchscreen to the PC, using the supplied cable.

Do not switch on scanner power!

Download and install software

1. Install scanning and maintenance software on Internet connected PC.



IMPORTANT: SOFTWARE MUST BE INSTALLED BEFORE THE SCANNER IS CONNECTED

Minimum system requirements

- Windows computer with Intel Core Duo, Core 2 Duo or i5 processors, 4GB RAM and 7200rpm HDD
- USB3 and Gigabit Ethernet interfaces with 64-bit Windows 10/11 operating system

Software download: <https://contex.com/support/hd-apeiron>



IMPORTANT: During all installation steps, be sure to select 'YES' if Windows asks you to allow the software to access the network.

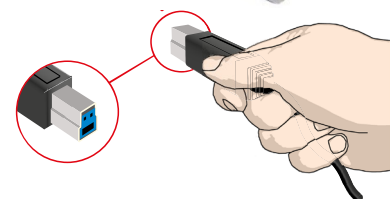
Connect the USB3 interface cable to the scanner

1. The interface connections are at the back of the scanner.
The USB3 socket on the scanner is colored blue inside.
2. Connect the squarer, step-shaped (B-connector) end of the cable to the USB3 socket.



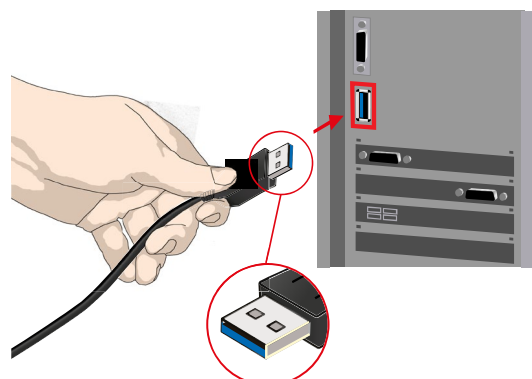
Regulatory Notice:

This scanner has been tested to comply with the EMC Standards EN55032 and FCC Part 15. To maintain compliance, use only the interface cables supplied with the scanner.



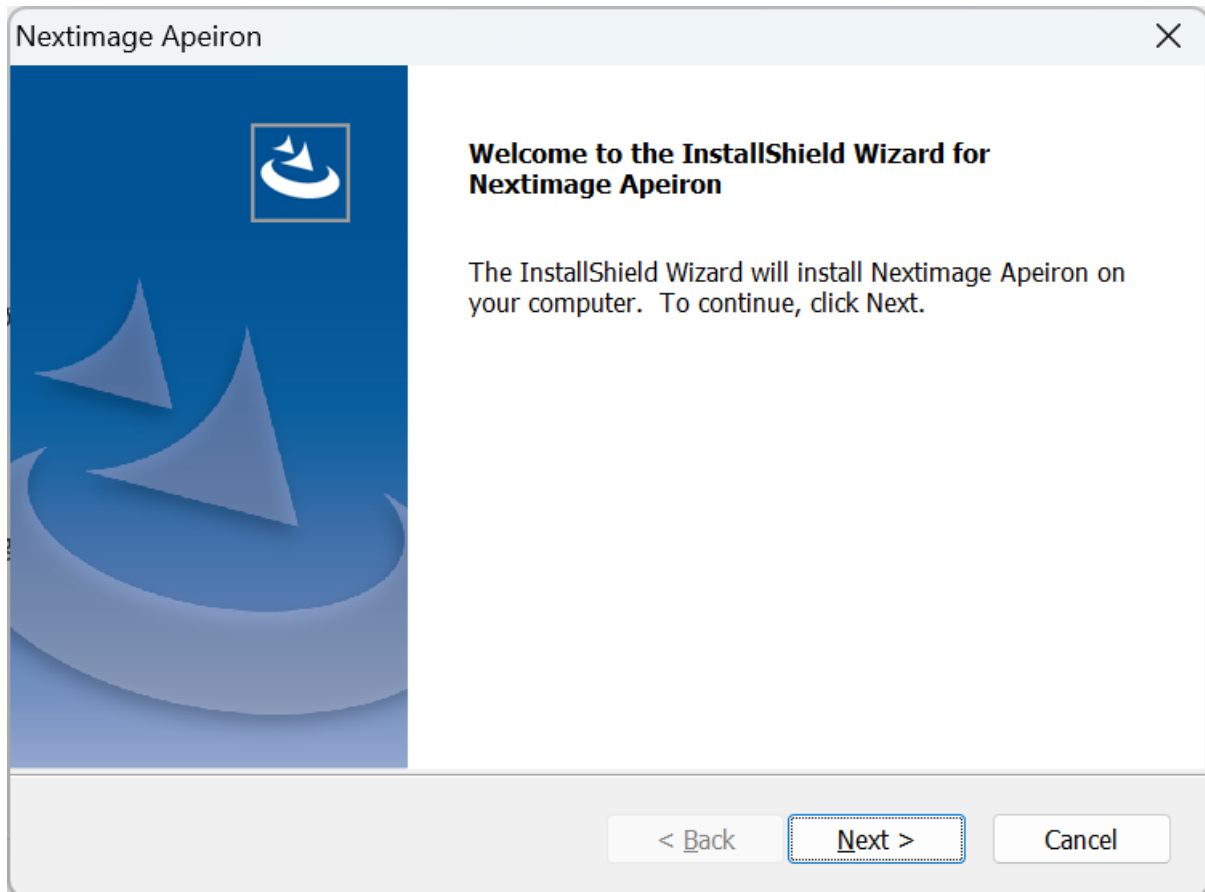
Connect the USB3 interface cable to the PC

1. Make sure the USB3 cable is connected to the scanner as instructed in the previous step
2. Connect the flat (A-connector) end of the USB cable to a USB3 socket on the PC
3. **Switch on scanner**



Software Installation Wizard

1. The computer will detect the scanner and start the scanner installation wizard
2. If the installation wizard does not start, perform one or more of the following:
 - a. Unplug and reinsert the USB connections to scanner and PC
 - b. Ensure the USB cable is properly connected
 - c. Try a different USB port on the PC

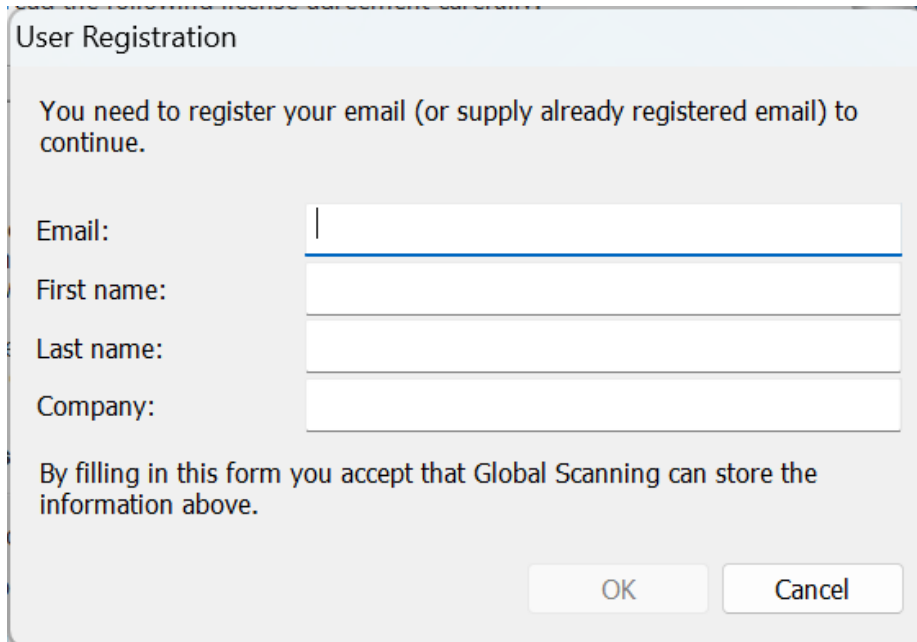


3. Click 'Next' and follow the instructions on the screen to install the scanner on the PC
4. Most of the scanner installation process is automatic



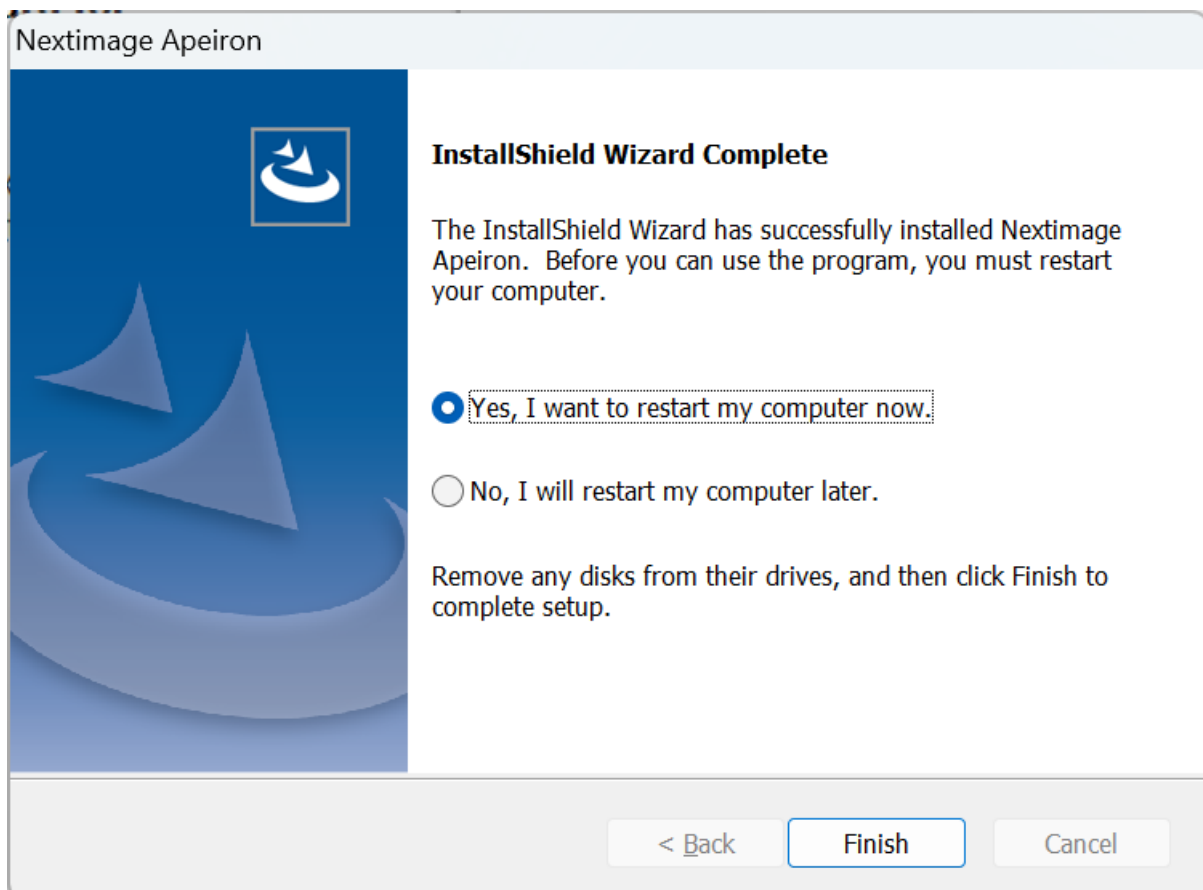
IMPORTANT: During all installation steps, be sure to select “YES” if Windows asks you to allow the software to access the network.

5. During installation you will be asked to register your scanner. Doing this will ease any support request you may need.



The 'User Registration' dialog box has a title bar with the text 'User Registration'. Below the title bar, the text reads: 'You need to register your email (or supply already registered email) to continue.' There are four input fields: 'Email:', 'First name:', 'Last name:', and 'Company:'. Below these fields, a message states: 'By filling in this form you accept that Global Scanning can store the information above.' At the bottom right, there are two buttons: 'OK' and 'Cancel'.

6. Click 'Finish' to complete the installation and restart the PC

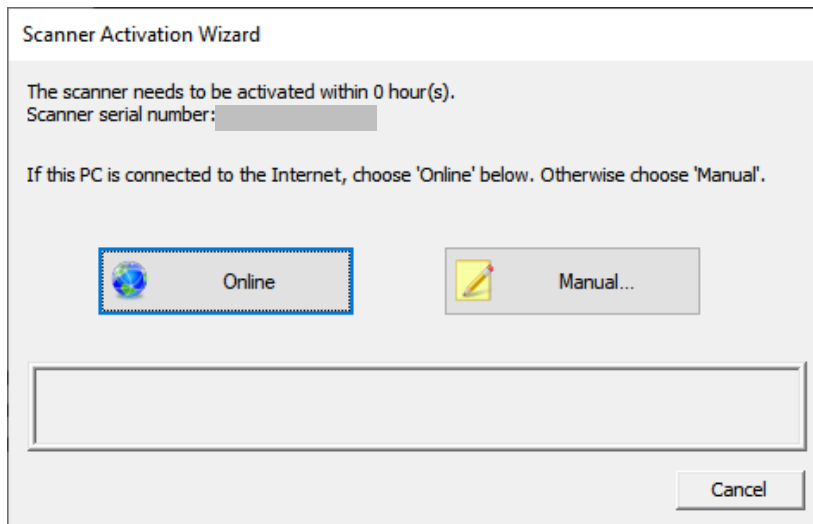


The 'Nextimage Apeiron' dialog box features a blue sidebar on the left with a white circular logo containing a stylized 'A'. The main area has a title bar 'Nextimage Apeiron' and a section titled 'InstallShield Wizard Complete'. The text below the title says: 'The InstallShield Wizard has successfully installed Nextimage Apeiron. Before you can use the program, you must restart your computer.' There are two radio button options: 'Yes, I want to restart my computer now.' (which is selected) and 'No, I will restart my computer later.' Below these options, a message reads: 'Remove any disks from their drives, and then click Finish to complete setup.' At the bottom, there are three buttons: '< Back', 'Finish', and 'Cancel'.

First time opening Nextimage Apeiron software

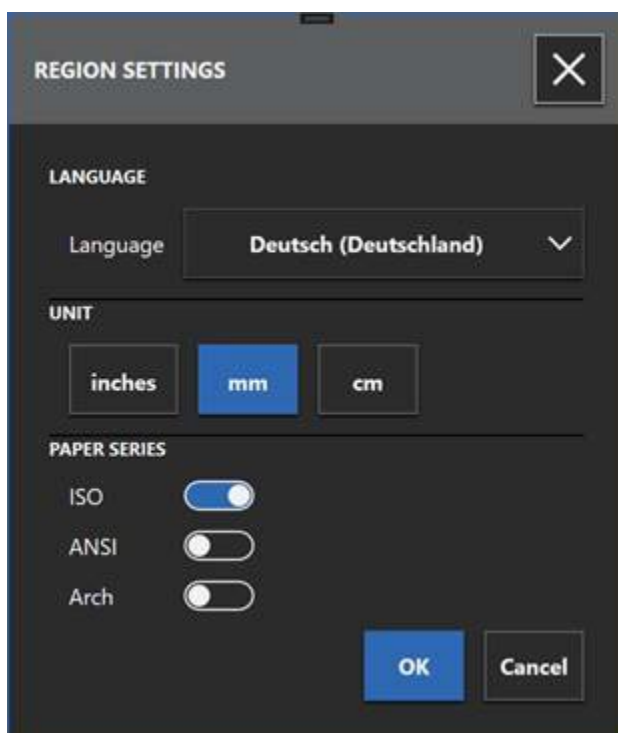
Scanner activation wizard

You must activate your scanner with its license before you can use it. Please follow the instructions on screen.



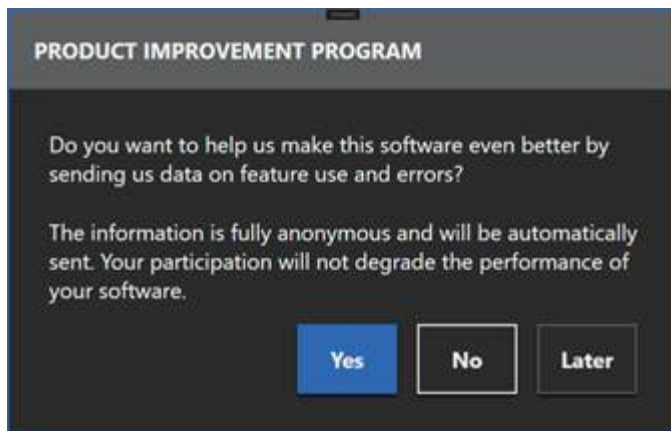
Region settings

The first time you open the Nextimage Apeiron software, you will get prompted to set your region settings for language, unit and which paper series you wish to include. These settings can always be changed at a later stage.



Product improvement program

Click on 'Yes' if you wish to help us improve Nextimage Apeiron with anonymous information.



Software registration

Registering your software is required. Enter the license key provided by your distributor or reseller.

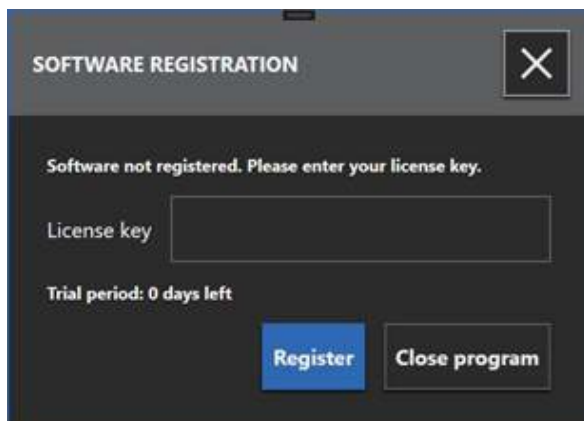
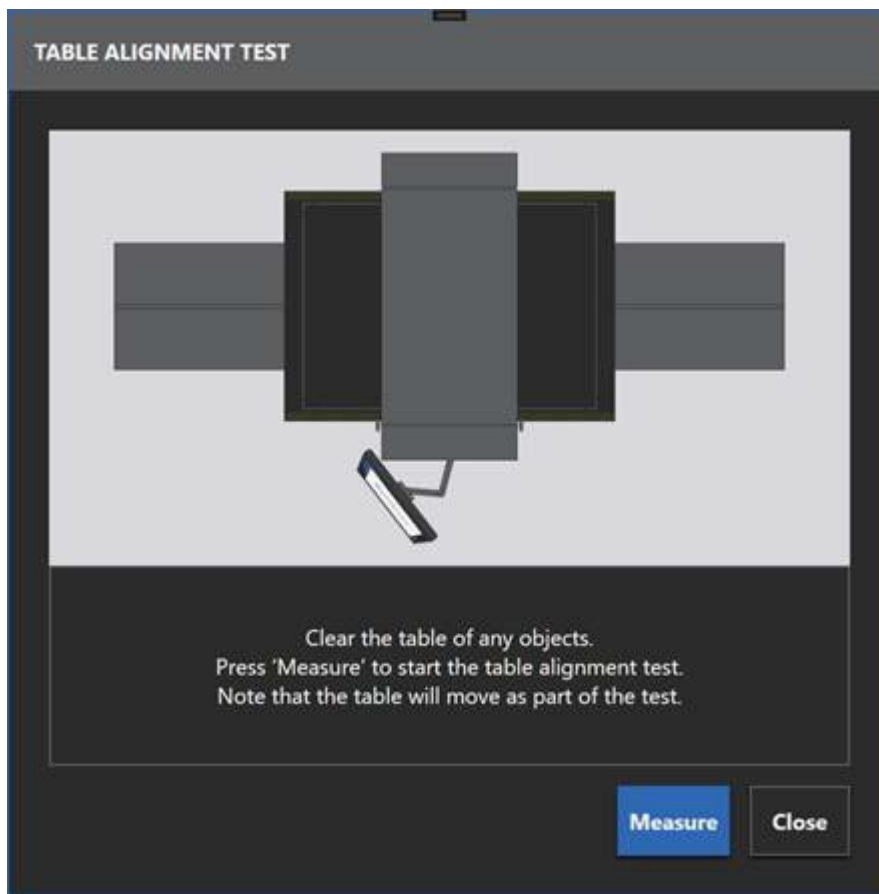


Table alignment test

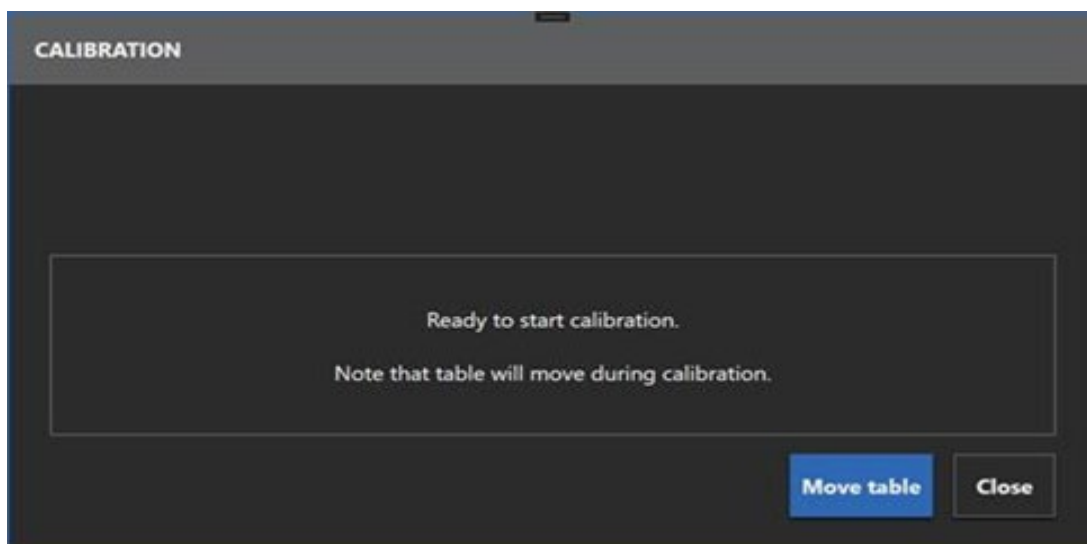
Follow the guidelines on screen.



Calibration

Locate the calibration sheet, and follow the guidelines on screen. After calibration, remove the calibration sheet, place in protective sleeve and store in a dry place.

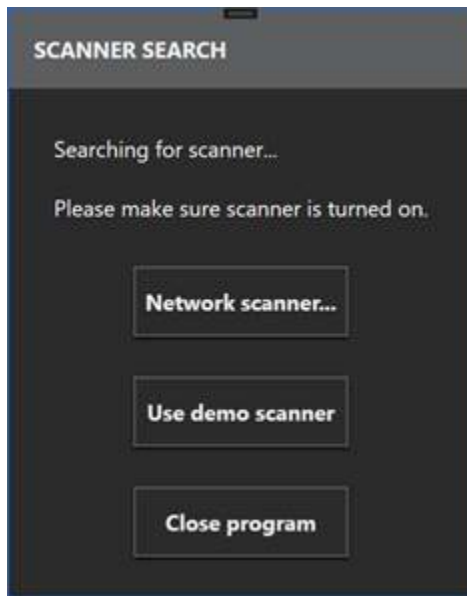
NOTE: Calibration needs to be carried out for each lamp positioning used.



Other prompts

Scanner search

This dialogue will only show, if your scanner is not turned on. Turn on the scanner and/or check the cables.

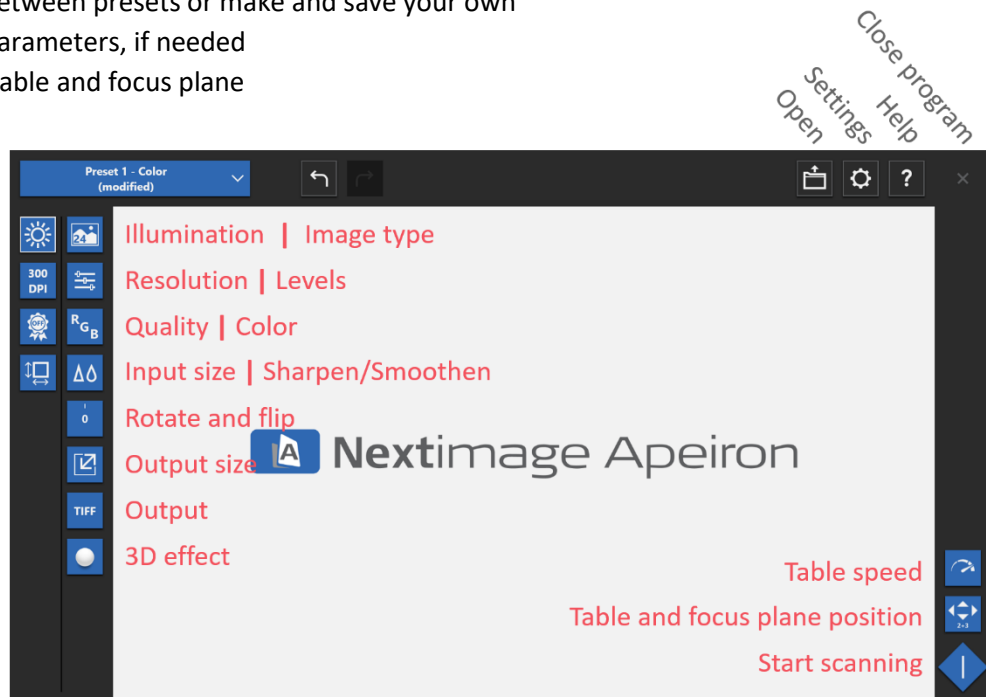


IMPORTANT: During all installation steps, be sure to select “YES” if Windows asks you to allow the software to access the network.

Software

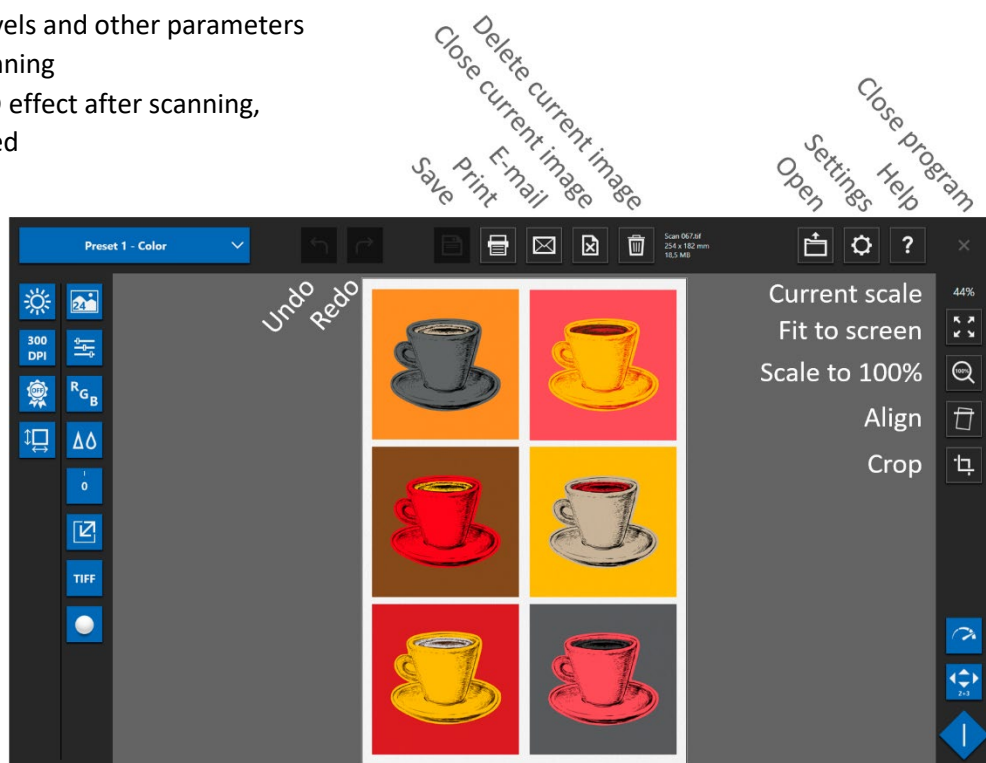
Before scanning

- Choose between presets or make and save your own
- Change parameters, if needed
- Position table and focus plane



After scanning

- Adjust levels and other parameters after scanning
- Adjust 3D effect after scanning, if activated

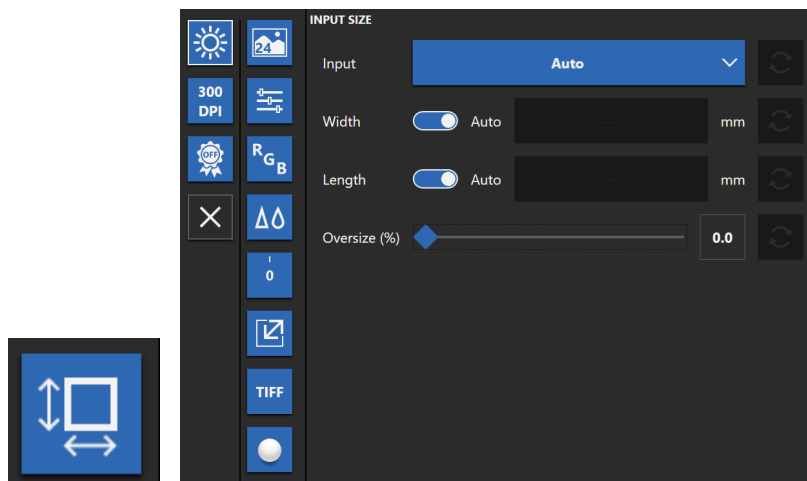


Setting the input size

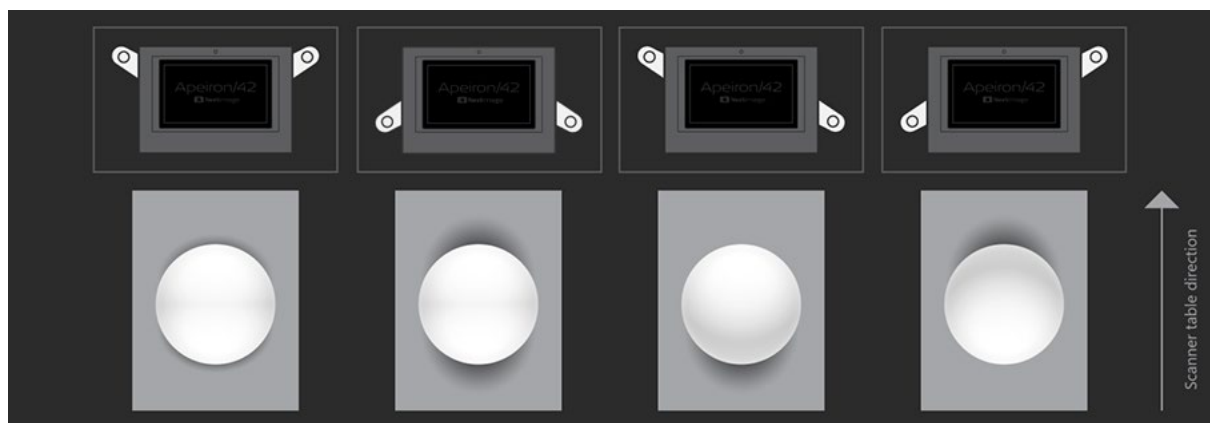
The input size defines the scan area.

As default, the scanner is set to automatic size detection, where the scanning system detects the edges of the document and calculates the input size automatically.

1. Place your original face up onto the scanner table with the top of the image entering the scanner first.



Setting the direction of light source



The 'Illumination' setting in the software indicates where and how much the highlights and shadows will affect the result - depending on how you position the lamps:. The effect can further be enhanced via 3D effect.

The software will inform you if the lamp levers position in the chosen setting doesn't match the current physical lamp position, and also what you need to do.

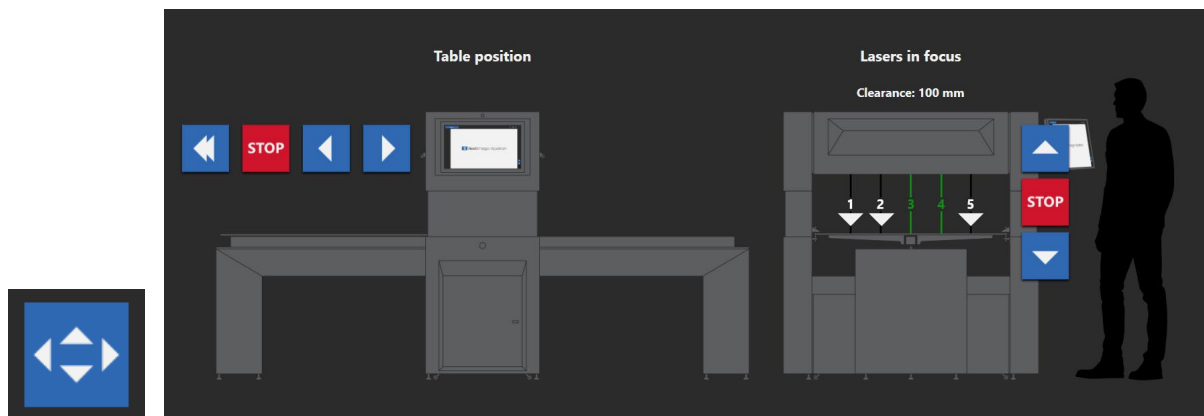


Scanner height adjustment

When the scan module is positioned in its lowest position, the focus plane is at the table surface.

When scanning originals with a raised surface, the scan module needs to be raised accordingly.

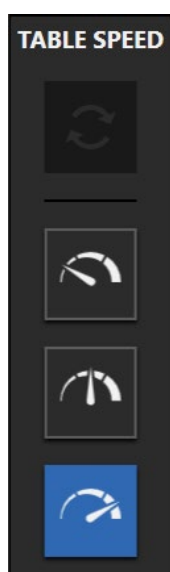
1. Place your original on the table.
2. Use the software to make sure the scanner is the right height by clicking this icon in the bottom right corner:



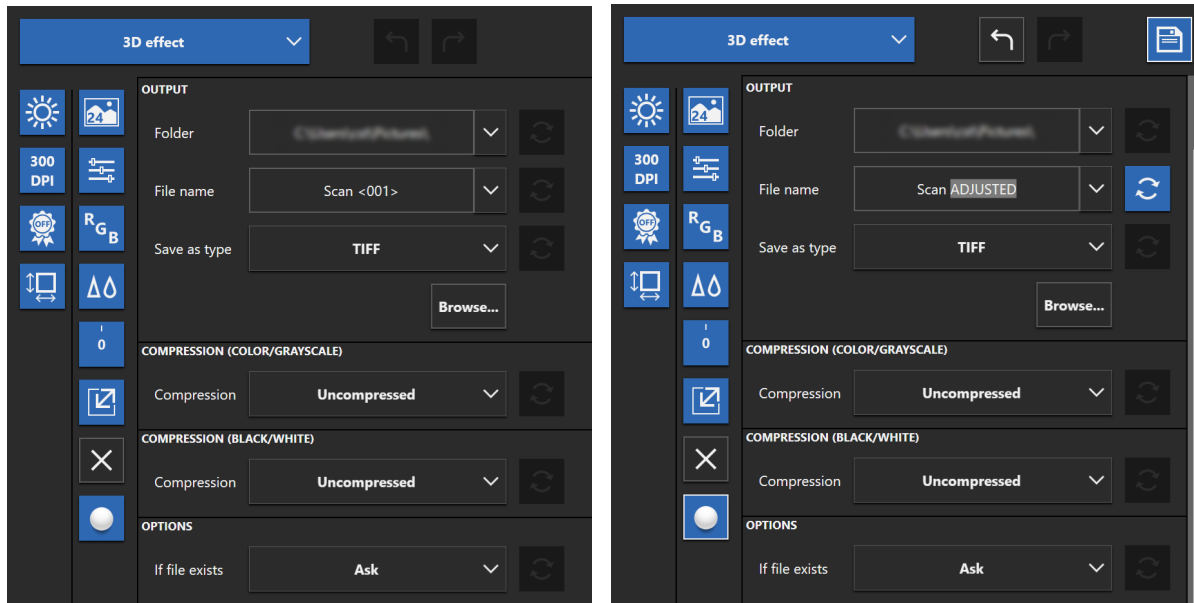
3. Move the table right / left so your original is under at least one of the lasers.
4. Use the arrows up / down to find the scan module position where the lasers are in focus – these are displayed as green in the software.

Scanner speed control

As default, the table speed is the highest of three speeds. For additional caution, you may change it to medium or low.



Scan destination, File Type, Name, Format



NOTE: Save a copy of an adjusted scan by manually changing the input in the File name and then press the Save button.

Maintenance

Cleaning

Wipe scanner with a lint free cloth.



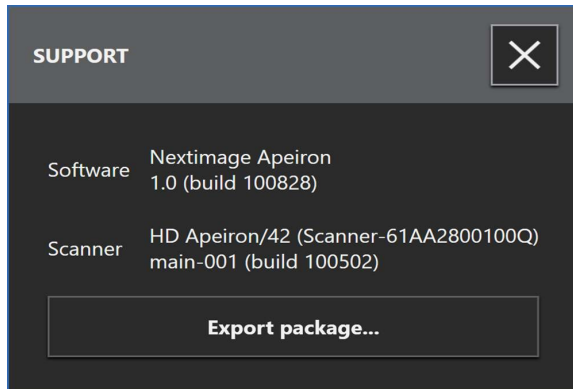
CAUTION: Do not use abrasives, acetone, benzene or any fluids that contain these chemicals. Do not spray liquids directly onto the scanner optics or anywhere else in the scanner.



Firmware

Firmware runs inside the scanner to link its processors with the PC software running the scanner.

Identifying scanner firmware



Upgrading firmware

Your scanner has the latest firmware available at time of shipping but you are permitted to upgrade this with newer firmware and can continue to do this for as long as new ones are released. Firmware upgrades can be downloaded from the Contex website or obtained from your dealer.

Upgrade your firmware:

- When new features are released or other improvements or fixes are made to the scanner firmware.

The downloaded firmware .exe file must exist on the pc connected to the scanner. Select the Save target (or Save Link) option if downloading from the web.

To install the firmware file on your scanner:

1. Go to the website and locate the new firmware for your scanner download/Save the firmware .exe file into a folder on your PC
2. Double click the .exe file to start the installation wizard
3. Follow the wizard instructions on your screen
4. Installation can take several minutes

Appendix

Troubleshooting

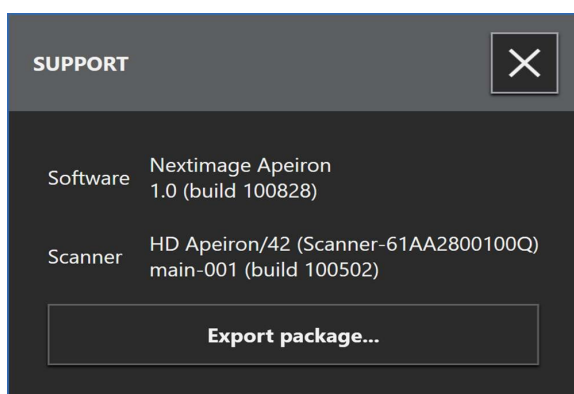
Online: <https://context.com/technical-support>

Assistance

Contact your service provider if the:

- Problem cannot be remedied through the action suggested onscreen/online.
- System fails to report the error on your screen

Via Settings, to go Support, Export package and include with your fault report to supplier.



Important Safety Instructions



Read all of these instructions and save them for later use. Follow all warnings and instructions marked on the scanner.

- Do not place the scanner on an unstable surface. Serious damage can be caused if the unit falls.
- When cleaning, do not spray/apply liquid cleaners directly onto the scanner parts.
- The scanner should be operated from the power source type indicated on the marking label. If you are unsure of the type of power available, consult your dealer or local power company.
- The scanner is intended for use on IT, TT and TN power distribution systems, and is equipped with a three-wire grounding type plug. This plug will fit only into a grounding-type power outlet. This is a safety feature which relies on building installation. If you are unable to insert the plug into the outlet contact your electrician to replace your obsolete outlet. Do not defeat or ignore the purpose of the grounding-type plug.
- Do not allow anything to rest on the power cord. Do not locate the scanner where persons will walk on the cord.
- If an extension cord is used with the scanner, make sure that the total ampere ratings of the products plugged into the extension cord does not exceed the extension card ampere rating. Make sure that the total rating of all products plugged into the wall outlet does not exceed 15 amperes.
- Avoid any possibility of spilling liquid of any kind on the scanner.

- H. Do not attempt to service the scanner yourself. Refer all servicing in those compartments to authorized service personnel.
- I. Unplug the scanner from the wall outlet and refer servicing to authorized service personnel under the following conditions:
- When the power cord or plug is damaged or frayed.
 - If liquid has been spilled into the scanner.
 - If the scanner has been exposed to rain or water.
 - If the scanner does not operate normally when operating instructions are followed then adjust only those controls covered by the instructions in this manual. Improper adjustment of controls other than those mentioned in this manual may result in permanent damage and will at best require extensive work by a qualified technician to restore this product to its normal operation.
 - If the scan module covers have been damaged.
 - If the scanner exhibits a distinct change in performance, indicating a need for service.

Regulations

FCC Regulations

USA

NOTE: This equipment has been tested and found to comply with the limits for a Class A digital device, pursuant to Part 15 of the FCC Rules. These limits are designed to provide reasonable protection against harmful interference when the equipment is operated in a commercial environment. This equipment generates, uses, and can radiate radio frequency energy and, if not installed and used in accordance with the instruction manual, may cause harmful interference to radio communications. Operation of this equipment in a residential area is likely to cause harmful interference in which case the user will be required to correct the interference at his/her own expense.

Caution: Pursuant to Part 15.21 of the FCC Rules, any changes or modifications not expressly approved by the manufacturer may cause harmful interference and void the user's authority to operate the equipment.

CE Regulations

EU

This equipment has been tested and found to comply with the limits for a Class A product according to EN55032.

VCCI Regulations

Japan

This equipment has been tested and found to comply with the limits for a Class A product according to Agreement of VCCI:2008 (CISPR 32).

この装置は、クラスA情報技術装置です。この装置を家庭環境で使用すると電波妨害を引き起こすことがあります。この場合には使用者が適切な対策を講ずるよう要求されることがあります。

VCCI-A

Toxic or hazardous substances and elements 有毒有害物质或元素名称及含量
RoHS information for users in China

| Part Name 部件名称 | Toxic or hazardous Substances and Elements 有毒有害物质或元素 | | | | | |
|-------------------|--|-------------------|-------------------|-----------------------------------|-------------------------------------|---|
| | Lead (Pb) 铅 | Mercury (Hg) 汞 | Cadmium (Cd) 镉 | Hexavalent Chromium (Cr (VI)) 六价铬 | Polybrominated biphenyls (PBB) 多溴联苯 | Polybrominated diphenyl ethers (PBDE) 多溴二苯醚 |
| Scanner 扫描仪 | ○ | ○ | ○ | ○ | ○ | ○ |

O: Indicates that this toxic or hazardous substance contained in all of the homogeneous materials for this part is below the limit requirement in SJ/T11363-2006.
O: 表示该有毒有害物质在该部件所有均质材料中的含量均在 SJ/T11363-2006 标准规定的限量要求以下。

X: Indicates that this toxic or hazardous substance contained in at least one of the homogeneous materials used for this part is above the limit requirement in SJ/T11363-2006.
X: 表示该有毒有害物质至少在该部件的某一均质材料中的含量超出 SJ/T11363-2006 标准规定的限量要求。

(Enterprises may further provide in this box technical explanation for marking "X" based on their actual conditions.
企业可在此处根据实际情况对上表中打 "X" 的技术原因进行进一步说明。)

RoHS information for users in Taiwan

| 單元 Unit | 限用物質及其化學符號 Restricted substances and its chemical symbols | | | | | |
|------------------|--|-------------------|-------------------|--|--|--|
| | 鉛 Lead (Pb) | 汞 Mercury (Hg) | 鎘 Cadmium (Cd) | 六價鉻 Hexavalent Chromium (Cr ⁺ 6) | 多溴聯苯 PolyBrominated Biphenyls (PBB) | 多溴二苯醚 PolyBrominated Diphenyl Ethers (PBDE) |
| IBF電路板 | ○ | ○ | ○ | ○ | ○ | ○ |
| 主控制電路板 | ○ | ○ | ○ | ○ | ○ | ○ |
| 電源模組 (插接器、開關) | ○ | ○ | ○ | ○ | ○ | ○ |
| 馬達 | ○ | ○ | ○ | ○ | ○ | ○ |
| 掃描鏡頭組件 | ○ | ○ | ○ | ○ | ○ | ○ |
| 左右蓋金屬外殼 | ○ | ○ | ○ | ○ | ○ | ○ |
| 上下蓋金屬外殼 | ○ | ○ | ○ | ○ | ○ | ○ |
| LED 燈條 | ○ | ○ | ○ | ○ | ○ | ○ |

備考 1. 超出 0.1 wt % 及 〃超出 0.01 wt % 係指限用物質之百分比含量超出百分比含量基準值。
Note 1: "Exceeding 0.1 wt %" and "exceeding 0.01 wt %" indicate that the percentage content of the restricted substance exceeds the reference percentage value of presence condition.

備考 2. 〃〃 係指該項限用物質之百分比含量未超出百分比含量基準值。
Note 2: "〃〃" indicates that the percentage content of the restricted substance does not exceed the percentage of reference value of presence.

備考 3. 〃-〃 係指該項限用物質為排除項目。
Note 3: The "〃-" indicates that the restricted substance corresponds to the exemption.

Manufacturer

GLOBAL SCANNING DENMARK A/S
SVANEVANG 2
3450 ALLEROED DENMARK

Details of Electrical Equipment

Model name: SA61A
Product name: Scanner
Rating voltage: 100-240V
Rating current: 2A
Operation environment: 10-35°C

CLASS 1 Laser Product

Wavelength: 520nm
Maximum power: 1mW



Complies with 21 CFR 1040.10 and 1040.11 except for conformance with IEC 60825-1 Ed. 3. as described in Laser Notice No. 56, dated May 8, 2019.



Caution: Use of controls or adjustments or performance of procedures other than those specified herein may result in hazardous radiation exposure.



Contex HQ & EMEA

Global Scanning Denmark A/S
Copenhagen, Denmark
Phone: +45 4814 1122
info@contex.com

Contex Americas

Global Scanning Americas Inc.
Chantilly, VA. 20151, USA
Phone: +1 (877) 226 6839
salesamericas@contex.com

Contex Japan & Asia

Global Scanning Japan A/S
Yokohama, Japan
Phone: +81 45 548 8547
apac@contex.com

