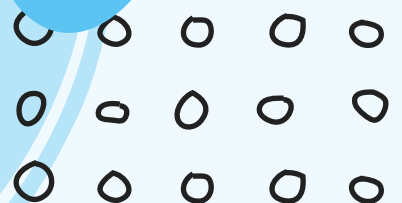


# SPAZZOLE E ACCESSORI

BRUSHES AND GROOMING ACCESSORIES



Cardatori dotati di comoda impugnatura in bambù e resistenti setole in acciaio.

*Slicker brushes with comfortable bamboo handle and resistant steel bristles.*



**B343/A**



**Cardatore  
in bambù - Small**

*Bamboo slicker brush*

**Pack: 1 pc**

**Size: 8 x 3,5 x 16 cm**



**B343/B**



**Cardatore  
in bambù - Medium**

*Bamboo slicker brush*

**Pack: 1 pc**

**Size: 10,5 x 4,5 x 18 cm**



**B343/C**



**Cardatore  
in bambù - Large**

*Bamboo slicker brush*

**Pack: 1 pc**

**Size: 10,5 x 6,5 x 19 cm**



doppia

**Spazzola doppia  
in legno**

*Double wooden brush*

**B221/C**



Pack: 6 pcs

Size: 17 cm



**B221/D**



Pack: 6 pcs

Size: 22 cm



**B221/E**



Pack: 6 pcs

Size: 25 cm



**B854**



**Spazzola  
per gatti**

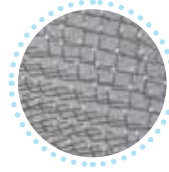
*Bristle brush for cats*

Pack: 6 pcs

Cardatori con impugnatura antiscivolo. Carda in acciaio con punte ricoperte. Testa in plastica.

*Slicker brush with antislip handle. Steel bristles with plastic caps. Plastic head.*

Soft



**B850/A**



8 019808 102863

**Cardatore in acciaio con punte ricoperte - S**

*Steel bristles with plastic caps*

Pack: 1 pc

Size: 7,5 x 5 cm



**B850/B**



8 019808 102870

**Cardatore in acciaio con punte ricoperte - M**

*Steel bristles with plastic caps*

Pack: 1 pc

Size: 10 x 6 cm



**B850/C**



8 019808 102887

**Cardatore in acciaio con punte ricoperte - L**

*Steel bristles with plastic caps*

Pack: 1 pc

Size: 11 x 7 cm

Cardatori con impugnatura antiscivolo. Carda in acciaio con punte ricoperte. Testa in acciaio cromato.

*Slicker brush with antislip handle. Steel bristles with plastic caps. Chrome-plated steel head.*



**B851/A**



**Cardatore in acciaio con punte ricoperte - S**

*Steel bristles with plastic caps*

Pack: 1 pc

Size: 6 x 4,5 cm



**B851/B**



**Cardatore in acciaio con punte ricoperte - M**

*Steel bristles with plastic caps*

Pack: 1 pc

Size: 8,5 x 4,5 cm



**B851/C**



**Cardatore in acciaio con punte ricoperte - L**

*Steel bristles with plastic caps*

Pack: 1 pc

Size: 10,5 x 5 cm



**B851/D**



**Cardatore in acciaio con punte ricoperte - XL**

*Steel bristles with plastic caps*

Pack: 1 pc

Size: 11 x 7 cm



doppio

**B852/E**



**Cardatore doppio  
con testina flessibile - S**

*Double flexible slicker brush - S*

Pack: 1 pc

Size: 10,5 x 5 cm



doppio

**B852/F**



**Cardatore doppio  
con testina flessibile - L**

*Double flexible slicker brush - L*

Pack: 1 pc

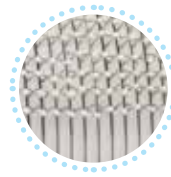
Size: 11 x 7 cm



La semplice pressione del pulsante sul retro permette di rimuovere senza fatica il pelo dalla spazzola che sarà così subito pronta per il successivo utilizzo. I denti in acciaio con punte in gomma e la speciale impugnatura garantiscono risultati ottimali ed un uso ancor più confortevole.

*By simply pressing a button, the pad can be wiped clean quickly to make your brush immediately ready to be used again. The comfort grip handle and stainless steel plastic coated pins provide excellent grooming results.*

Denti in acciaio



★  
**B337/A**



**Spazzola autopulente  
EasyToClean - S**

*Self-cleaning slicker brush - EasyToClean - S*

Pack: 1 pc

Size: 8,6 x 5,7 cm



★  
**B337/B**



**Spazzola autopulente  
EasyToClean - M**

*Self-cleaning slicker brush - EasyToClean - M*

Pack: 1 pc

Size: 10,5 x 6,5 cm



40 denti

chrome-plated steel teeth



**B729/B**



**Rastrello  
con manico in legno**

*Rake with wooden handle*

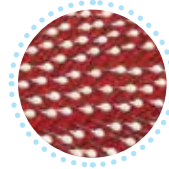
Pack: 1 pc

Size: 16 cm

Cardatori con comoda impugnatura antiscivolo, dotati di denti in acciaio con punte arrotondate.

*Slicker brusher with comfortable non-slip handle and steel teeth with coated pins.*

Soft



**B335/A**



**Cardatore  
con denti in Acciaio - S**

*Slicker brush with stainless steel pins - S*

Pack: 1 pc

Size: 6 x 4,5 cm



**B335/B**



**Cardatore  
con denti in Acciaio - M**

*Slicker brush with stainless steel pins - M*

Pack: 1 pc

Size: 8,5 x 4,5 cm



**B335/C**



**Cardatore  
con denti in Acciaio - L**

*Slicker brush with stainless steel pins - L*

Pack: 1 pc

Size: 12 x 5,5 cm



**B335/D**



**Cardatore  
con denti in Acciaio - XL**

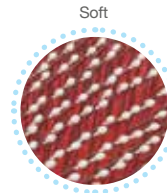
*Slicker brush with stainless steel pins - XL*

Pack: 1 pc

Size: 12 x 8 cm

Cardatori con comoda impugnatura in legno, dotati di denti in acciaio con punte arrotondate.

*Slicker brushes with comfortable wooden handle and steel teeth with coated pins.*



**B781/A**



Cardatore con manico in legno  
Denti in acciaio - S

*Slicker brush with wooden handle and stainless steel pins - S*

Pack: 6 pcs

Size: 6 x 4,5 cm



**B781/B**



Cardatore con manico in legno  
Denti in acciaio - M

*Slicker brush with wooden handle and stainless steel pins - M*

Pack: 6 pcs

Size: 9 x 4,5 cm



**B781/C**



Cardatore con manico in legno  
Denti in acciaio - L

*Slicker brush with wooden handle and stainless steel pins - L*

Pack: 6 pcs

Size: 12 x 6 cm



**B781/D**



Cardatore con manico in legno  
Denti in acciaio - XL

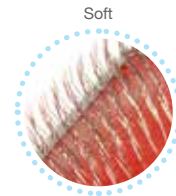
*Slicker brush with wooden handle and stainless steel pins - XL*

Pack: 6 pcs

Size: 12,5 x 8 cm

Cardatori cromati, dotati di pettinino, manico in legno e carda in metallo.

*Chromium-plated slicker brush with cleaning comb and wooden handle.*



**B790/A**



8 019808 063355

**Cardatore cromato con pettinino - S**

*Chrome-plated slicker brush with small comb - S*

**Pack:** 12 pcs

**Size:** 6 x 4,5 x 12,5 cm



**B790/B**



8 019808 063362

**Cardatore cromato con pettinino - M**

*Chromium-plated slicker brush with cleaning comb - M*

**Pack:** 12 pcs

**Size:** 8,5 x 4,5 x 12,5 cm



**B790/C**



8 019808 063379

**Cardatore cromato con pettinino - L**

*Chromium-plated slicker brush with cleaning comb - L*

**Pack:** 12 pcs

**Size:** 11,5 x 6,5 x 13,5 cm



**B790/D**



8 019808 063386

**Cardatore cromato con pettinino - XL**

*Chromium-plated slicker brush with cleaning comb - XL*

**Pack:** 12 pcs

**Size:** 11,5 x 7,5 x 19,5 cm



Legno

**B344/A**



**Cardatore con manico in legno verniciato con denti in acciaio con punte arrotondate**

*Slicker brush with coated wooden handle, steel teeth with rounded tips*

Pack: 1 pc

Size: 200x96x62 mm



Legno

**B344/B**



**Cardatore con manico in legno verniciato con denti in acciaio con punte arrotondate**

*Slicker brush with coated wooden handle steel teeth with rounded tips*

Pack: 1 pc

Size: 208x96x62 mm



legno

**B223**



**Spazzola doppia in legno**

*Double wooden brush*

Pack: 6 pcs

Size: 10x18cm



plastica

**B859**



**Spazzola doppia con maniglia in plastica**

*Flea brush with plastic handle*

Pack: 6 pcs

Size: 16x10cm





**B350**



8 019808 151915

**Slanatore professionale  
con doppia lama**

*Professional Shedding blade  
Double-toothed blade*

**Pack:** 1 pc

**Size:** S - 4,5 cm



Soft touch



Ergonomic



**B351**



8 019808 151922

**Slanatore professionale  
con doppia lama**

*Professional Shedding blade  
Double-toothed blade*

**Pack:** 1 pc

**Size:** L - 7,6 cm



**B352**



8 019808 151939

**Slanatore professionale  
con doppia lama**

*Professional Shedding blade  
Double-toothed blade*

**Pack:** 1 pc

**Size:** XL - 11 cm

Grazie alla doppia dentatura della sua lama di acciaio inossidabile e al pratico sistema di rotazione, questo slanatore è efficace per manti fitti oppure ruvidi ed anche per manti fini. È dotato di una pratica impugnatura ergonomica "Soft-touch" che rende l'uso ancor più confortevole.

Rimuovendo con delicatezza il sottopelo in eccesso e abbattendo quindi lo spargimento di peli rispetto alle normali spazzole e pettini, aiuterà anche a rendere la casa un ambiente più sano, particolarmente per chi soffre di allergie.

*This Shedding blade removes moulting and loose hair in your pet's thick, wire or fine coat thanks to its double-toothed stainless steel blade and to its convenient rotating system. The soft grip ergonomic handle makes safe in your hand and easier to work with.*

*It removes loose hair and excess undercoat better than any brush, rake or comb. It prevents shedding and keeps your house cleaner and healthier especially for allergic family members.*



Soft touch



**B353/A**  
8 019808 258898

**Slanatore professionale  
con doppia lama**

*Professional deshedding tool*

Pack: 1 pc  
Size: S - 4,5 cm



**B353/B**  
8 019808 258904

**Slanatore professionale  
con doppia lama**

*Professional deshedding tool*

Pack: 1 pc  
Size: L - 6,5 cm



**B353/C**  
8 019808 258911

**Slanatore professionale  
con doppia lama**

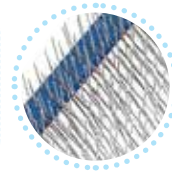
*Professional deshedding tool*

Pack: 1 pc  
Size: XL - 10 cm



Linea "Soft Grip" con manico in gomma e plastica, ergonomico ed antiscivolo.

"Soft Grip" line with ergonomic, nonslip rubber and plastic handle.



**B724/A**



8 019808 069456

**Cardatore  
con carda in acciaio - S**

*Slicker brush with steel pins - S*

**Pack: 1 pc**

**Size: 7 x 5 x 17,5 cm**



**B724/B**



8 019808 069463

**Cardatore  
con carda in acciaio - M**

*Slicker brush with steel pins - M*

**Pack: 1 pc**

**Size: 10 x 5 x 18 cm**



**B724/C**



8 019808 069470

**Cardatore  
con carda in acciaio - L**

*Slicker brush with steel pins - L*

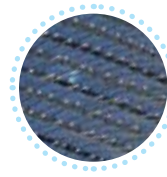
**Pack: 1 pc**

**Size: 12 x 6,5 x 20 cm**



La semplice pressione del pulsante sul retro permette di rimuovere senza fatica il pelo dalla spazzola che sarà così subito pronta per il successivo utilizzo. I denti in acciaio e la speciale impugnatura garantiscono risultati ottimali ed un uso ancor più confortevole.

*By simply pressing a button, the pad can be wiped clean quickly to make your brush immediately ready to be used again. The comfort grip handle and stainless steel pins provide excellent grooming results.*



push to clean



**B723/A**



**Spazzola con griglia rimuovi-pelo  
"Easy to Clean" - S**

*Easy to Clean Slicker  
brush with fur grid - S*

**Pack: 1 pc**  
**Size: 8 x 5 cm**



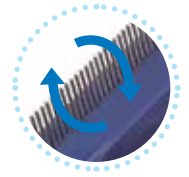
**B723/B**



**Spazzola con griglia rimuovi-pelo  
"Easy to Clean" - M**

*Easy to Clean Slicker  
brush with fur grid - S*

**Pack: 1 pc**  
**Size: 10 x 6 cm**



**B701**



**Rastrello a 37 denti rotanti**

*Rotating rake with 37 teeth*

Pack: 3 pcs



**B702**



**Rastrello a 27 denti rotanti**

*Rotating rake with 27 teeth*

Pack: 3 pcs



denti lunghi  
e denti corti

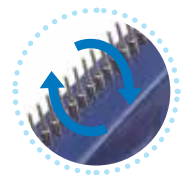
**B703**



**Rastrello a 39 denti rotanti**

*Rotating rake with 39 short and long teeth*

Pack: 3 pcs



denti lunghi

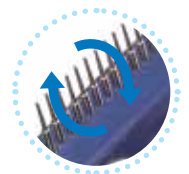
**B704**



**Rastrello a 20 denti rotanti**

*Rotating rake with 20 long teeth*

Pack: 3 pcs



denti corti

**B705**



**Rastrello a 20 denti rotanti**

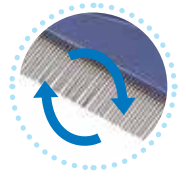
*Rotating rake with 20 short teeth*

Pack: 3 pcs



per pulci

**B710**



**Pettine con 68 denti rotanti in acciaio**

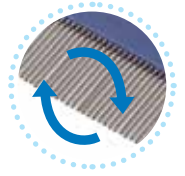
*Rotating comb with 68 steel teeth*

Pack: 3 pcs



per pulci

**B711**



**Pettine con 42 denti rotanti in acciaio**

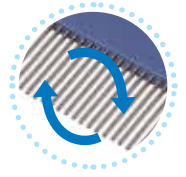
*Rotating comb with 42 steel teeth*

Pack: 3 pcs



29 denti

**B712**



**Pettine con 29 denti rotanti in acciaio**

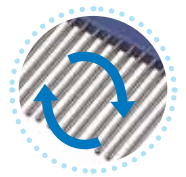
*Rotating comb with 29 steel teeth*

Pack: 3 pcs



20 denti

**B713**



**Pettine con 20 denti rotanti in acciaio**

*Rotating comb with 20 steel teeth*

Pack: 3 pcs



alternati

**B714**



**Pettine con 29 denti rotanti in acciaio**

*Rotating comb with 29 steel teeth*

Pack: 3 pcs

Tagliaunghie per cani, con lame in acciaio inox, solida impugnatura in plastic, chiusura di sicurezza e speciale barra ferma-unghia.

*Nail trimmer for dogs, with stainless steel blades, moulded comfort plastic handles, lock mechanism and safety guard.*



**B152**



**Tagliaunghie grande  
"Deluxe" - L**

*"Deluxe" big  
nail trimmer - L*

**Pack: 3 pcs**



**B153**



**Tagliaunghie piccolo  
"Deluxe" - S**

*"Deluxe" small  
nail trimmer - S*

**Pack: 6 pcs**

Tagliaunghie per cani e gatti, con lame lucide in acciaio inossidabile, impugnatura antiscivolo, chiusura di sicurezza e speciale barra ferma-unghia.

*Nail trimmer for dogs and cats, with bright stainless steel blades, anti-slip handle, lock mechanism and safety guard.*



**B150/A**



**Tagliaunghie piccolo  
con lame in acciaio**

*Small nail clipper  
with steel blades*

**Pack: 6 pcs**

**Size: 12 cm**



**B150/B**



**Tagliaunghie grande  
con lame in acciaio**

*Large nail clipper  
with steel blades*

**Pack: 3 pcs**

**Size: 15 cm**

Linea "Soft Grip" con manico in gomma e plastica, ergonomico ed antiscivolo.

*"Soft Grip" line with ergonomic, nonslip rubber and plastic handle.*



acciaio

**B154/A**



**Forbici tagliaunghie  
pro mini**

*Pro mini nail clipper*

Pack: 6 pcs



acciaio

**B154/B**



**Tagliaunghie  
pro mini con lame rialzate**

*Nail clipper with angled blades*

Pack: 6 pcs



MINI

**B155/A**



**Tagliaunghie  
Pro-mini**

*Nail clipper*

**Pack: 6 pcs**

**Size: 10 cm**



MINI

**B155/B**



**Tagliaunghie  
Pro-mini lame rialzate**

*Nail clipper*

**Pack: 6 pcs**

**Size: 12 cm**



acciaio

**B156**



**Forbici Tagliaunghie  
grande con lame in acciaio**

*Large nail clipper with steel blades*

**Pack: 6 pcs**

**Size: 13 cm**



acciaio

**B157**



**Forbici Tagliaunghie  
con lame in acciaio**

*Large nail clipper with steel blades*

**Pack: 6 pcs**

**Size: 10,5 cm**

Pettini lineare con manico in legno, pensati per tutti i tipi di pelo.  
*Linear combs with wooden handle, designed for all types of fur.*



50 denti

**B900**



8 019808 187426

**Pettine 50 denti  
con manico in legno**

*50 teeth comb with wooden handle*

Pack: 6 pcs



32 denti

**B901**



8 019808 187433

**Pettine 32 denti  
con manico in legno**

*32 teeth comb with wooden handle*

Pack: 6 pcs



21 denti

**B902**



8 019808 187440

**Pettine 21 denti  
con manico in legno**

*21 teeth comb with wooden handle*

Pack: 6 pcs



Pettini lineare con manico in legno, pensati per tutti i tipi di pelo.  
*Linear combs with wooden handle, designed for all types of fur.*



doppio

**B904**



**Pettine doppio con manico in legno**

*Double comb with wooden handle*

Pack: 6 pcs



alternati

**B905**



**Pettine con denti alternati con manico in legno**

*Comb with wooden handle*

Pack: 6 pcs



acciaio inox

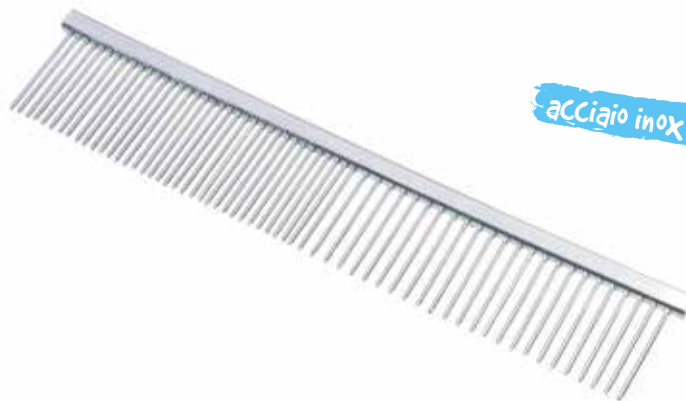
**B920**



**Pettine lineare cromato**

*Chrome-plated comb*

Pack: 6 pcs



acciaio inox

**B921**



**Pettine lineare cromato**

*Chrome-plated comb*

Pack: 6 pcs





denti rotanti



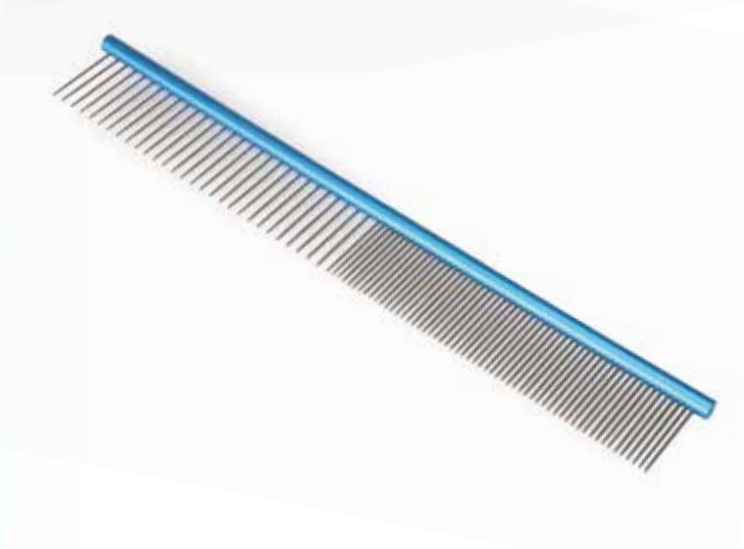
**B923**



**Pettine lineare in plastica  
con 50 denti rotanti in metallo**

*Linear plastic comb with metal rotating teeth*

Pack: 6 pcs  
Size: xxx cm



**B922**



**Pettine lineare  
Dual-teeth 81**

*Linear comb*

Pack: 1 pc  
Size: 30 cm



TPR

**B791**



**Cardatore morbido con pettino per pulizia  
maniglia in plastica con presa in TPR**

*Soft slicker brush with little cleaning comb, plastic handle with TPR grip*

Pack: 6 pcs  
Size: Small



per pulci

**B810/A**



**Pettine per pulci  
con maniglia in plastica**

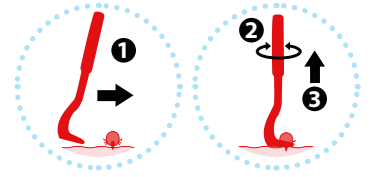
*Flea comb with plastic handle*

Pack: 6 pcs  
Size: 16x10cm





**B811/B**  
8 019808 190068



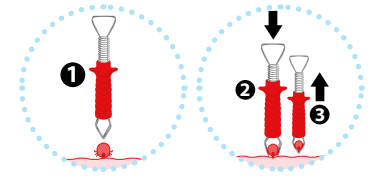
**Uncini in plastica per rimozione zecche**

*Plastic tick hook*

**Pack: 12 blister (3 pcs)**



**B812**  
8 019808 207865



**Pinzetta per rimozione zecche**

*Tick tweezers*

**Pack: 6 pcs**



**B139**  
8 019808 006901



**Coltellino da stripping denti fitti**

*Stripping knife with fine teeth*

**Pack: 1 pc**



**B140**  
8 019808 006918



**Coltellino da stripping denti larghi**

*Stripping knife with coarse teeth*

**Pack: 1 pc**



Linea di taglianodi a rastrello dotati di comoda impugnatura "Soft Grip".  
*Detangling rake line, equipped with a comfortable soft grip handle.*



**B720/A**



**Taglianodi a rastrello  
8 lame**

*Dematting rake with 8 blades*

**Pack: 3 pcs**



**B720/B**



**Taglianodi a rastrello  
12 lame**

*Dematting rake with 12 blades*

**Pack: 3 pcs**



**B720/C**



**Taglianodi a rastrello  
8 lame**

*Dematting rake with 8 blades*

**Pack: 3 pcs**



**B720/D**



**Taglianodi a rastrello  
12 lame**

*Dematting rake with 12 blades*

**Pack: 3 pcs**



**B331**



**Taglianodi a rastrello  
12 + 11 lame**

*Dematting rake with 12+11 blades*

**Pack: 3 pcs**



**B740**



**Taglianodi a falce  
9 lame**

*Dematting rake with 9 blades*

**Pack: 6 pcs**

**Size: 17 cm**



**B741**



**Taglianodi a falce  
9 lame**

*Dematting rake with 9 blades*

**Pack: 6 pcs**

**Size: 15 cm**



*silicone*

**B124/A**



**Set di spazzolini  
a dito**

*Finger Toothbrushes for dogs and cats*

**Pack: 8 blister (2 pcs)**





silicone

**B124**



**Set di spazzolini a dito**

*Finger toothbrush set*

Pack: 6 blister (2 pcs)



PVC

**B125**



**Spazzolino a dito**

*Finger toothbrush*

Pack: 6 blister - 2 pcs



doppio

**B126**



**Spazzolino con due testine**

*Double Head Toothbrush*

Pack: 3 blister - 1 pc



**B127**



**Set di spazzolini**

*Set of toothbrushes*

Pack: 1 pc



**B128**



**Set di spazzolini in plastica, nylon**

*Set of toothbrushes*

Pack: 6 blister (4 pcs)





**G133/A**



**Forbici dritte  
in acciaio**

*Stainless steel straight scissors*

Pack: 6 pcs



**G133/B**



**Forbici da sfoltimento  
in acciaio**

*Stainless steel thinning scissors*

Pack: 6 pcs





TPR

**B857/A**



**Spazzola palmare in TPR  
forma cane**

*TPR dog-shaped shedding brush*

**Pack: 4 pcs  
Size: 8,5 x 13 cm**



gomma

**B194/C**



**Spazzola palmare  
in gomma**

*Scrubbing rubber brush*

**Pack: 6 pcs  
Size: 13 x 9 cm**



gomma

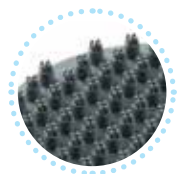
**B191/A**



**Spazzola palmare  
in gomma**

*Scrubbing rubber brush*

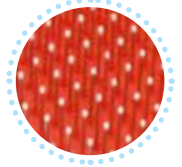
**Pack: 6 pcs  
Size: 13 x 9 cm**



Speciale per Terrier/Boxer e cani a pelo corto.  
Designed for Terriers, Boxers and short-haired dogs.



**B856**



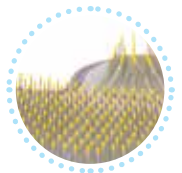
**Spazzola palmare con impugnatura morbida per cani**  
*Shedding brush with soft handle for dogs*

Pack: 4 pcs  
Size: 13 x 17,5 cm



TPR

**B189/C**



**Guanto cardatore con punte rivestite in plastica per cani**  
*Slicker glove with plastic caps*

Pack: 1 pc



TPR

PP

**B858**



**Spazzola gommata in TPR e PP 2-in-1**  
*2-in-1 TPR and PP rubber-coated brush*

Pack: 8 pcs

Adatti a cani e gatti a pelo corto. Doppia azione: lato massaggiante e lato rimuovipelo.

*Short-haired dogs and cats. Coat care and massage, Velour side for loose hair.*



doppia azione

**B189/E**



**Guanto massaggiante e rimuovipelo per cani e gatti**

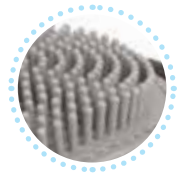
*Massage glove and hair remover for dogs and cats*

Pack: 6 pcs



doppia azione

**B190/A**



**Guanto rimuovipelo con carda fitta per cani e gatti**

*Deshedding glove for dogs and cats*

Pack: 1 pc



doppia azione

**B190/B**



**Guanto rimuovipelo con carda larga per cani e gatti**

*Deshedding glove for dogs and cats*

Pack: 1 pc

Adatti a cani e gatti a pelo corto e pelo ruvido.

*Short hair and wire coats.*



TPR



**B189/D**  
8 019808 186566

**Guanto rimuovipelo a cinque dita per cani e gatti**

*Five finger deshedding glove for dogs and cats*

Pack: 1 pc



TPR



**B189**  
8 019808 010885

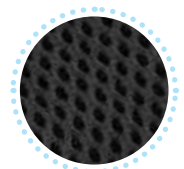
**Guanto da massaggio in TPR e cotone per animali**

*TPR and cotton massage glove for pets*

Pack: 6 pcs



TPR



**B189/B**  
8 019808 095547

**Guanto da massaggio in TPR e in rete per animali**

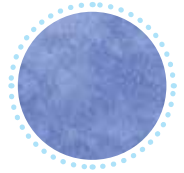
*TPR and mesh massage glove for pets*

Pack: 6 pcs



microfibra

**B205**



**Panno in microfibra super assorbente per cani**

*Microfiber dog towel*

Pack: 1 pc

Size: 50 x 60 cm



microfibra

**B208**



**Asciugamano in microfibra Maxi**

*Maxi Microfiber towel*

Pack: 6 pcs

Size: 60 x 120 cm

Il massimo potere assorbente nel minimo spazio. In soli 0,2 centimetri di spessore, questo panno in fibra sintetica garantisce il massimo potere assorbente nel minimo spazio.

*Extra absorbing power in a very small thickness. This towel in synthetic fibers is 0.2 cm thick and guarantees the highest absorption in a very small thickness.*



PVA

**B211**



**Panno magico "Pet dry" extra assorbente**

*Extra absorbing cloth "Pet dry"*

Pack: 4 pcs

Size: 66 x 43 x 0,2 cm



Il massimo potere assorbente nel minimo spazio.  
In soli 0,2 centimetri di spessore, questo panno in fibra sintetica garantisce il massimo potere assorbente nel minimo spazio.

*Extra absorbing power in a very small thickness. This towel in synthetic fibers is 0.2 cm thick and guarantees the highest absorption in a very small thickness.*



**B210**



8 019808 190594

**Panno magico  
super assorbente**

*Super absorbing cloth*

Pack: 1 pc

Size: 66 x 43 x 0,2 cm



**B210/A**



8 019808 196374

**Espositore completo  
per panno super assorbente**

*Super absorbing cloth in display box*

Pack: 1 display - 12 pcs

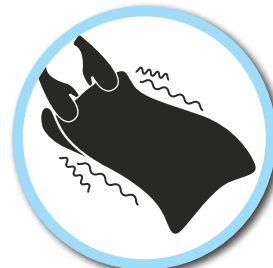
Size: 66 x 43 x 0,2 cm



**INUMIDIRE IL PANNO**  
Soak towel with water



**STRIZZARE IL PANNO**  
Squeeze out excess water



**SCUOTERE IL PANNO**  
Shake to activate



poliuretano

**B077/A**



**Elastici colorati**

*Colourful elastic bands*

**Pack:** 12 buste - 100 pcs  
**Size:** 3,5/4 cm



**B375**



**Display fiocchetti colorati con elastico**

*Colourful bows with elastic in display box*

**Pack:** 1 display - 63 pcs (9colori x 7)  
**Size:** 3/4 cm



**B378**



**Focchi assortiti per toelettatura**

*Mixed bows for grooming salons*

**Pack:** 1 conf - 40 pcs  
**Size:** 3,5/4 cm



**B375/C**



**Focchetti colorati con elastico**

*Colourful bows with elastic*

**Pack:** 12 conf - 2 pcs  
**Size:** 3/3,5 cm



**B377/A**



**Papillon regolabili  
in colori assortiti**

*Adjustable  
bow ties*

**Pack: 6 pcs**

**Size: 20/35 cm**



**B377/B**



**Papillon regolabili  
in colori assortiti**

*Adjustable  
bow ties*

**Pack: 6 pcs**

**Size: 20/35 cm**



**B377/C**



**Papillon a quadretti  
per cani**

*Bow ties for dogs (checkered)*

**Pack: 6 pcs**

**Size: 30/47 cm**



**B377/D**



**Papillon a righe  
per cani**

*Bow ties for dogs (striped)*

**Pack: 6 pcs**

**Size: 30/47 cm**



**Cravattina regolabile per cani**

*Necktie for dogs*

**C714/N**



Pack: 6 pcs

Size: S: 10x5cm

**C714/O**



Pack: 6 pcs

Size: M: 15x5cm



**Bandana double face per cani**

*Reversible dog bandana*

**DC311/A**



Pack: 1 pc

Size: 50 cm

**DC311/C**



Pack: 1 pc

Size: 100 cm

**DC311/B**



Pack: 1 pc

Size: 68 cm



**Bandana doppio strato per cani**

*Grey polyester bandana, double layer*

**DC313/A**



Pack: 1 pc

Size: 50 cm

**DC313/C**



Pack: 1 pc

Size: 90 cm

**DC313/B**



Pack: 1 pc

Size: 65 cm



**Collare con bandana per cani**

*Adjustable collar with red bandana, polyester*

**DC314/A**



Pack: 1 pc

Size: 1x20/30cm

**DC314/C**



Pack: 1 pc

Size: 2x3,5/50cm

**DC314/B**



Pack: 1 pc

Size: 1,5x22,5/4,3cm

**DC314/D**



Pack: 1 pc

Size: 2x3,5/60cm