



MARMORIN HYDRO

Water-repellent, smooth, translucent lime based marmorino plaster with a transparent finishing coat for total waterproof protection of lime-based surfaces and stone materials

Description	Expressly created for bathrooms or for those rooms where water is present. HYDRO is a translucent slaked lime based Marmorino plaster formulated with special additives that make the surface highly water-repellent. The waterproof and washable texture gives life to smooth surfaces moved by the materic strokes of its application. Hydro Protection is a waterproof finishing coat that has a calm saturated look that is neither glossy nor matt.
Consumption rate	3,0-3,5 kg/m ² for two coats
Interiors / Exteriors	Interiors and Exteriors

MARMORIN

Lime based finishing plaster, polished marble effect

Description	An ecological lime plaster based on lime putty suitable for internal and external finishes and the decoration of new and old buildings with architectural and historical importance. The product has many outstanding characteristics which include high water vapour permeability, colour stability, ease of application, excellent fire resistance and a natural appearance typical of old lime based plasters.
Consumption rate	0,9 - 1,2 kg/m ² per coat
Interiors / Exteriors	Interiors and Exteriors

MARMORIN SAND

Lime based finishing plaster, spotted marble effect

Description	A finishing plaster based on lime putty designed to achieve translucent finishes and smooth surfaces. The specially coloured sands give the wall fascinating natural spotted decorative effects. Specifically recommended for the renovation of historical buildings and walls enriched with cornices, friezes, and pilasters. Due to its natural composition the final colour will appear shaded.
Consumption rate	2,0-2,5 kg/m ² for two coats
Interiors / Exteriors	Interiors and Exteriors

MARMORIN EXTRA

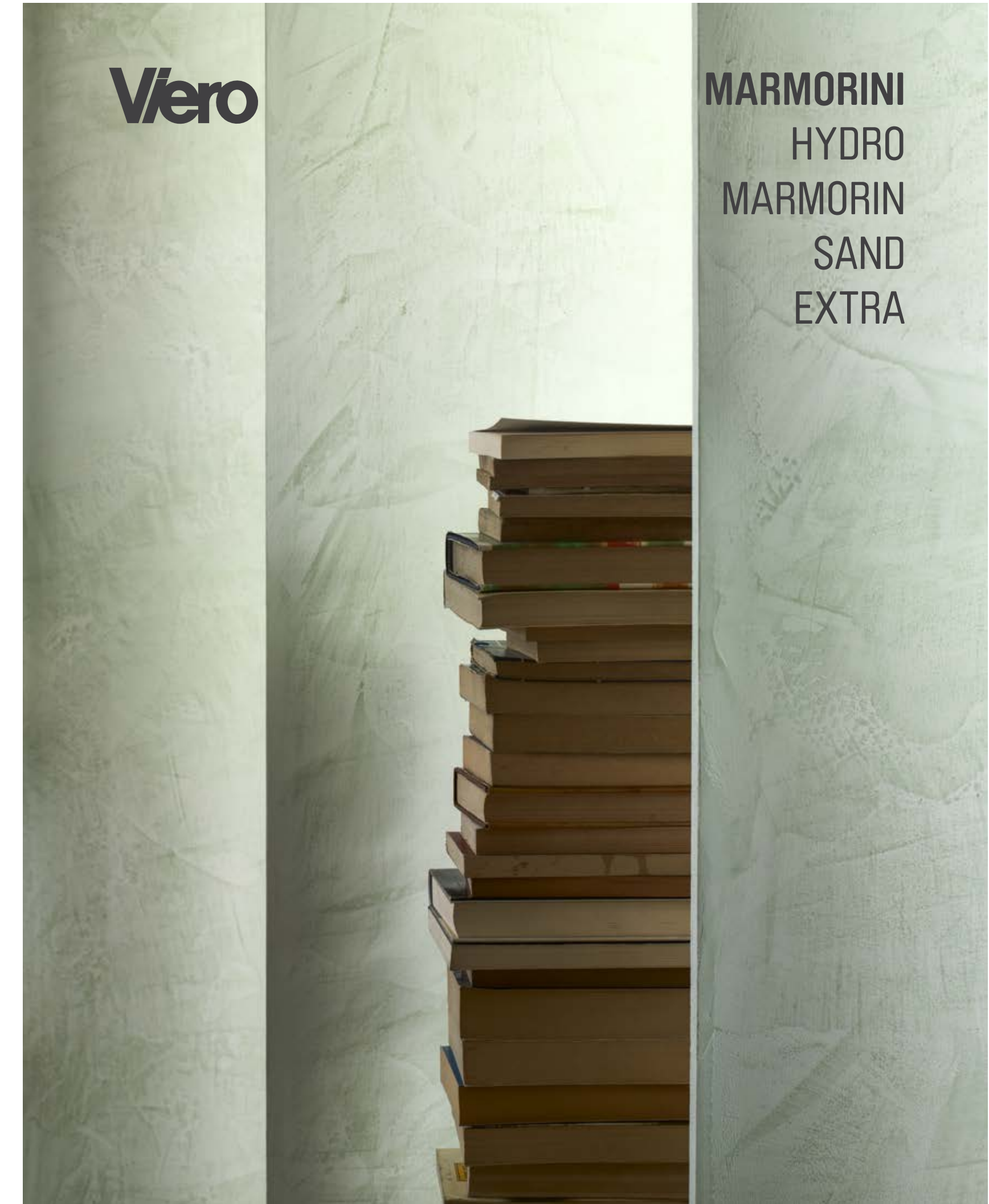
Lime based finishing plaster traditional marmorino effect

Description	Marmorin Extra is a finishing plaster based on lime putty designed to achieve translucent finishes with either a smooth or rough and open texture. It is specifically recommended for the renovation of historical buildings and walls particularly where cornices or other decorative friezes are on the façade. By employing different application techniques it is possible to confer walls with a variety of fascinating and bespoke decorative effects.
Consumption rate	3,0-4,0 kg/m ² for two coats
Interiors / Exteriors	Interiors and Exteriors

Viero
Phone +39.0583.2424
info@vieropaints.com
www.vieropaints.com

MKEXCC0059/16

MARMORINI
|
Viero



Marmorin: MM47



Marmorin Hydro / Marmorin / Marmorin Sand / Marmorin Extra



MM01



MM07



MM47



MM18



NEUTRAL



MM29



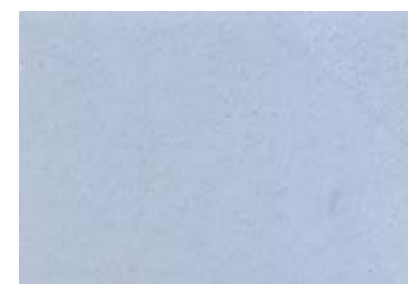
MM35



MM41



MM02



MM08



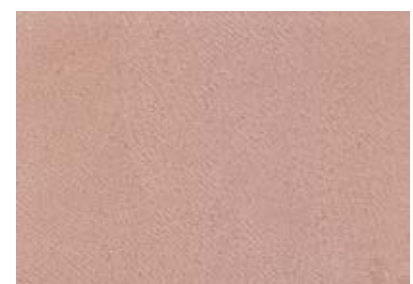
MM13



MM19



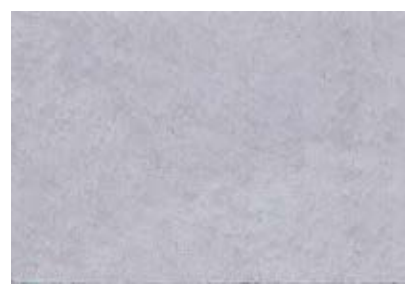
MM24



MM30



MM36



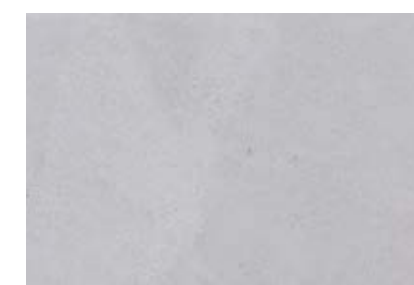
MM42



MM03



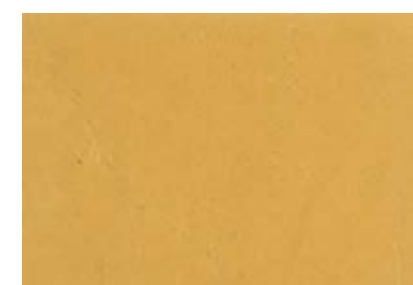
MM09



MM14



MM20



MM25



MM31



MM37



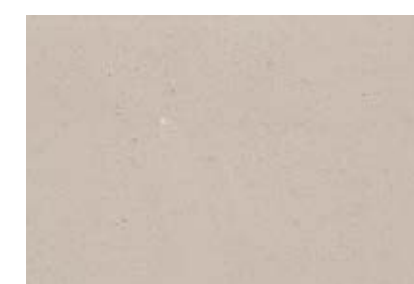
MM43*



MM04



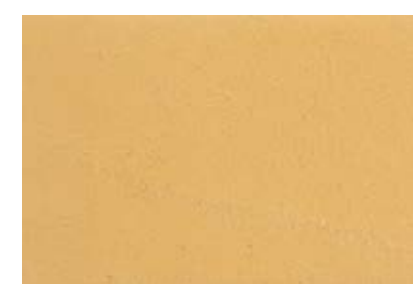
MM10



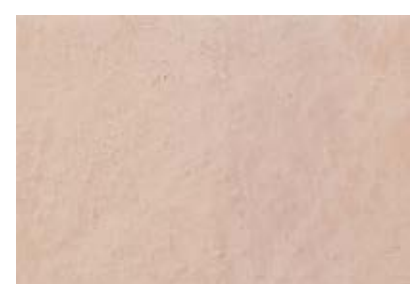
MM15



MM21



MM26



MM32



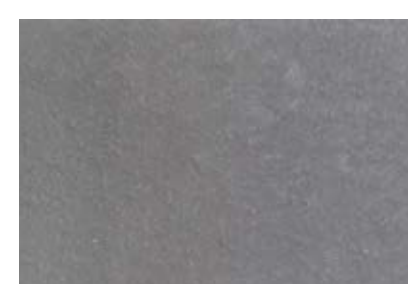
MM38



MM44



MM05



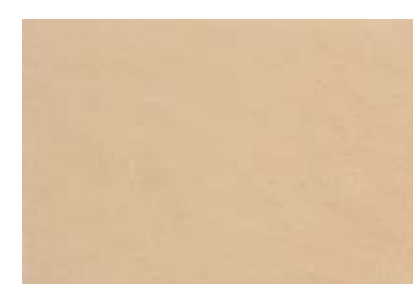
MM11



MM16



MM22



MM27



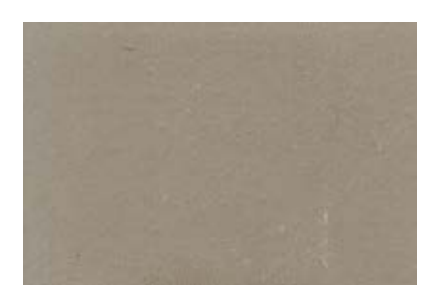
MM33



MM39*



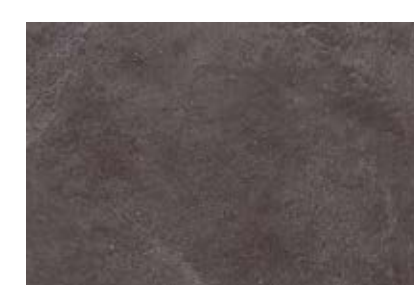
MM45



MM06



MM12



MM17



MM23*



MM28



MM34



MM40*



MM46

Marmorin SAND: MM47



Marmorin Extra: MM47

