

How to change the reed holder

Related products : Oboe profiler, bassoon tip profiler, and bagpipe tip profiler.

The following manuals are applicable to this document :

- The [Oboe profiler manual v05](#).
- The [Bassoon tip profiler manual v02](#). This manual also applies to the bagpipe tip profiler.

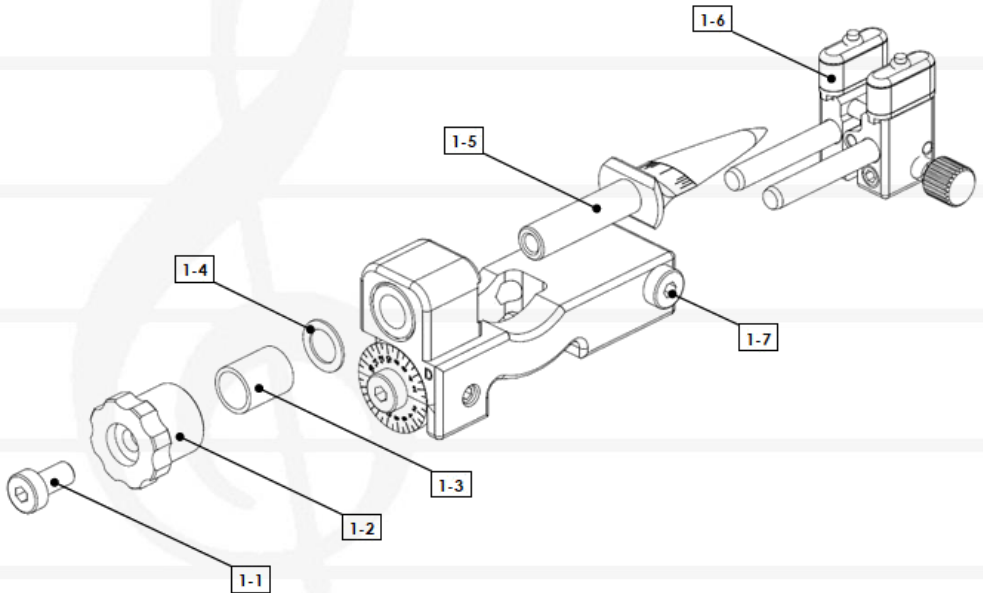


Image 1

1. Put the carriage set in the park position. For detailed information, see the applicable manual.
2. Unthigten reed clamp set screw [1-7] and remove reed clamp set [1-6].
3. Rotate reed holder [1-5] 90° so it is in a vertical position.
4. Hold the reed holder with your fingers and remove reed holder screw [1-1].



Note

Compression spring [1-3] behind knob [1-7] will decompress when the reed holder screw comes out of its threaded hole.

Be ready to hold the force of the decompression spring.

5. Remove knob [1-2], compression spring [1-3], and slide ring [1-4].
6. Rotate the reed holder 90° so it is in a horizontal position.
7. Remove the old reed holder and install the new reed holder.
8. Rotate the reed holder 90° so it is in a vertical position.
9. Install the slide ring, compression spring, and knob.
10. Hold the reed holder with your fingers and tighten the reed holder screw.
11. Rotate the reed holder 90° so it is in a horizontal position.
12. Install the reed clamp set and tighten the reed clamp set screw.