

Sample information

Sample Name : ANMA DOL CREAM 0,1% CBD - Lot. NSC01310828
 Sample ID : H2708206
 Analysis date : 27/08/2020
 Matrix : Cream
 Sampling : Internal

Cannabinoid profile

Detector A

Name	Dry weight %
CBDV	0,00
CBDA	0,08
CBGA	0,00
CBG	0,00
CBD	0,06
THCV	0,00
CBN	0,00
d9-THC	0,00
d8-THC	0,00
CBC	0,00
THCA	0,00

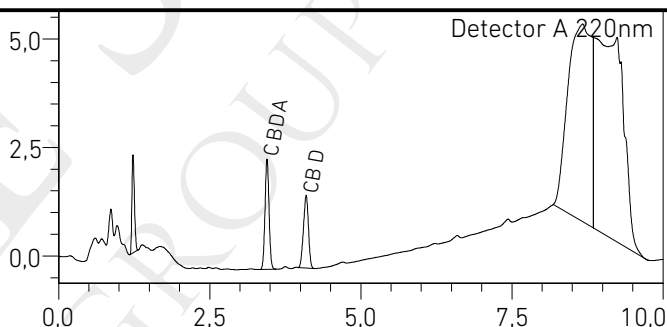
Total THC	0,00	%
Total THC	0,00	mg/g
Total CBD	0,13	%
Total CBD	1,29	mg/g

% = (w / w) = (Analyte weight / Prod

* Total THC / CBD is calculated using
 following in order to calculate the g
 carboxylic during decarbox
 Total THC = THC + (THC/
 Total CBD = CBD + (CBD/

LOD (Limit of Detection) **:
 LOQ (Limit of Quantification) **
 ** For all cannabir

Sample photo



The analysis for the quantitative determination of the main cannabinoids was released on 28/08/2020


28/08/2020



Responsabile di laboratorio

The results of the analysis are based on the sample sent to NatureScience Lab. under the conditions received.
 NatureScience Lab. guarantees that all analytical work is carried out professionally in accordance with the standards
 laboratory tests using methods validated by the scientific community.
 This Certificate cannot be reproduced, if not complete, without the approval of NatureScience Lab.




 NATURE SCIENCE GROUP	TS02 TECHNICAL PRODUCT SHEET	Date 15/08/2020 Rev. 02 Edition 01 Pag. 1 di 2
--	---------------------------------	---

PRODUCT NAME	Cannabis Sativa L. Infused MCT oil in base dense cream		
SALES NAME	Anma Dol Premium CBD Cream		
PROPERTIES	Organic raw vegetal matherial, ISO9001-2015 certified, Solventless process		
INGREDIENTS (INCI)	1	INCI	Caprylic/Capric Triglyceride
		CAS #	73398-61-5 / 65381-09-1
		EC #	277-452-2 / 265-724-3
	2	Base Cream Dense INCI %	Aqua > 50
			Petrolatum 10 - 15
			Paraffinum liquidum 5 - 10
			Cetearyl alcohol 5 - 10
			Dimethicone 1 - 5
			Ceteareth-20 1 - 2
			Glycerin 1 - 2
			Benzyl alcohol 0,1 - 1
			Phenoxyethanol 0,1 - 0,50
			Imidazolidinyl urea 0,1 - 0,50
			Sodium dehydroacetate 0,05 - 0,15
	3	INCI	Calendula Officinalis Flower Extract
		CAS #	84776-23-8
	4	INCI	Harpagophytum Procumbens Root Extract
		CAS #	84988-65-8
	5	INCI	Arnica Montana Flower Extract
		CAS #	68990-11-4
	6	INCI	Cannabis Sativa Leaf Extract
CULTIVAR	Cannabis Sativa L. from varieties certified by common catalog of cultivable plants according to L242 / 2016		
PART OF THE PLANT USED	leaf		
BOTANICAL NAME	Cannabis Sativa Linnaeus		
EXTRACTION SOLVENT	Cannabis Sativa L.		None
	Calendula, Harpagophytum, Arnica		Hydroalcoholic extract
ORGANOLEPTIC CHARACTERISTICS	Intense Vegetal Flavor		
HOW TO USE	Product ready for use or usable in other preparations		
	For external use		
STORAGE METHOD CLOSED	Store in a cool, dry place away from light sources and heat		
STORAGE METHOD OPEN	Store in a cool, dry place away from light sources and heat		



 NATURE SCIENCE GROUP	TS02 TECHNICAL PRODUCT SHEET	Date 15/08/2020 Rev. 02 Edition 01 Pag. 2 di 2
---	---------------------------------	---

PRODUCT IMAGE		
		
CHEMICAL-PHYSICAL AND BIOLOGICAL PARAMETERS		
SPECIFICATION	METHOD	Lower Lim. – Upper Lim.
Appearance	Visual	Light green dense cream
Color	Visual	Pale light Green/white
Smell	Olfactory	Aromatic, resinous, Characteristic
Density	Densimeter	0,940 – 0,990 (g/ml)
Ph	PH-meter	6,0 – 7,0
Viscosity	Viscosimeter	20.000 – 30.000 (Rotor n.R6 speed 20 rpm) (mPA.s)
Total aerobic count*		<=10 (CFU/g)
Gmo free		The product does not derive from Genetically Modified Organisms pursuant to EC Reg. 1829/2003 and 1830/2003
* Test not required		
Store the product in a cool and dry place, away from acids. The formulation in the finished product must be monitored to avoid the formation of substances that would make the product fall within the cosmetic restriction Annex II n. 306 of Regulation (EC) no. 1223/2009, substances listed in Tables I and II of the Single Convention on Narcotic Drugs signed in New York on March 30, 1961.		
The product does not contain significant percentages of the 26 substances, identified as allergens, listed in point 15 of Directive 2003/15 / EC.		
The product in question has never been tested on animals (Legislative Decree 15/02/2005 No. 50, art. 2 bis: "Implementation of Directives 2003/15 / EC and 2003/80 / EC on cosmetic products).		
SUBSTANCES IN CANNABIS SATIVA EXTRACT*		
FORMULA	C ₂₁ H ₃₀ O ₂	
Molecular weight	314,46 g/mol	
CAS no	13956-29-1	
* According to the applicable legislation it is not necessary to declare any component		

