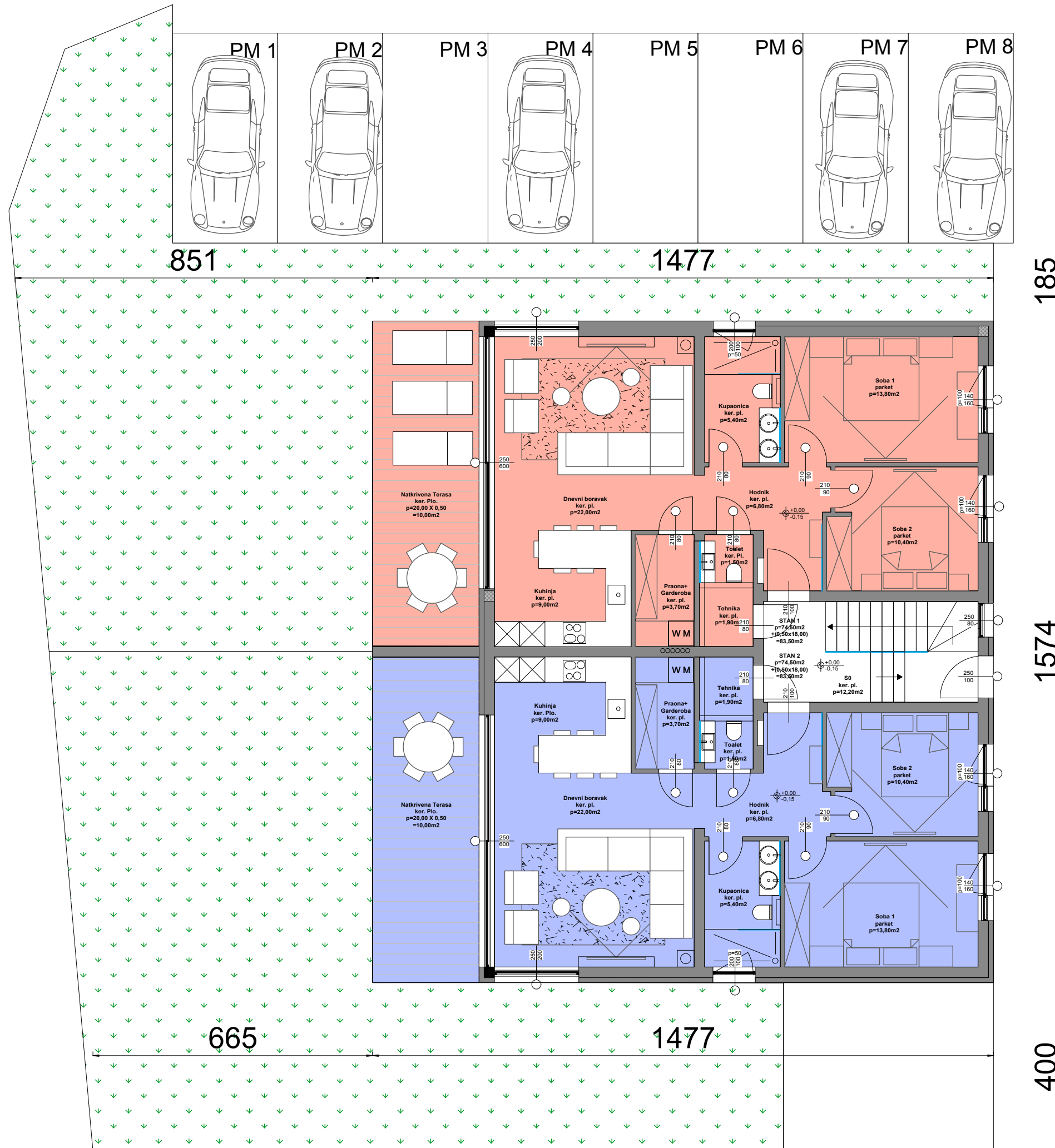


ZGRADA A

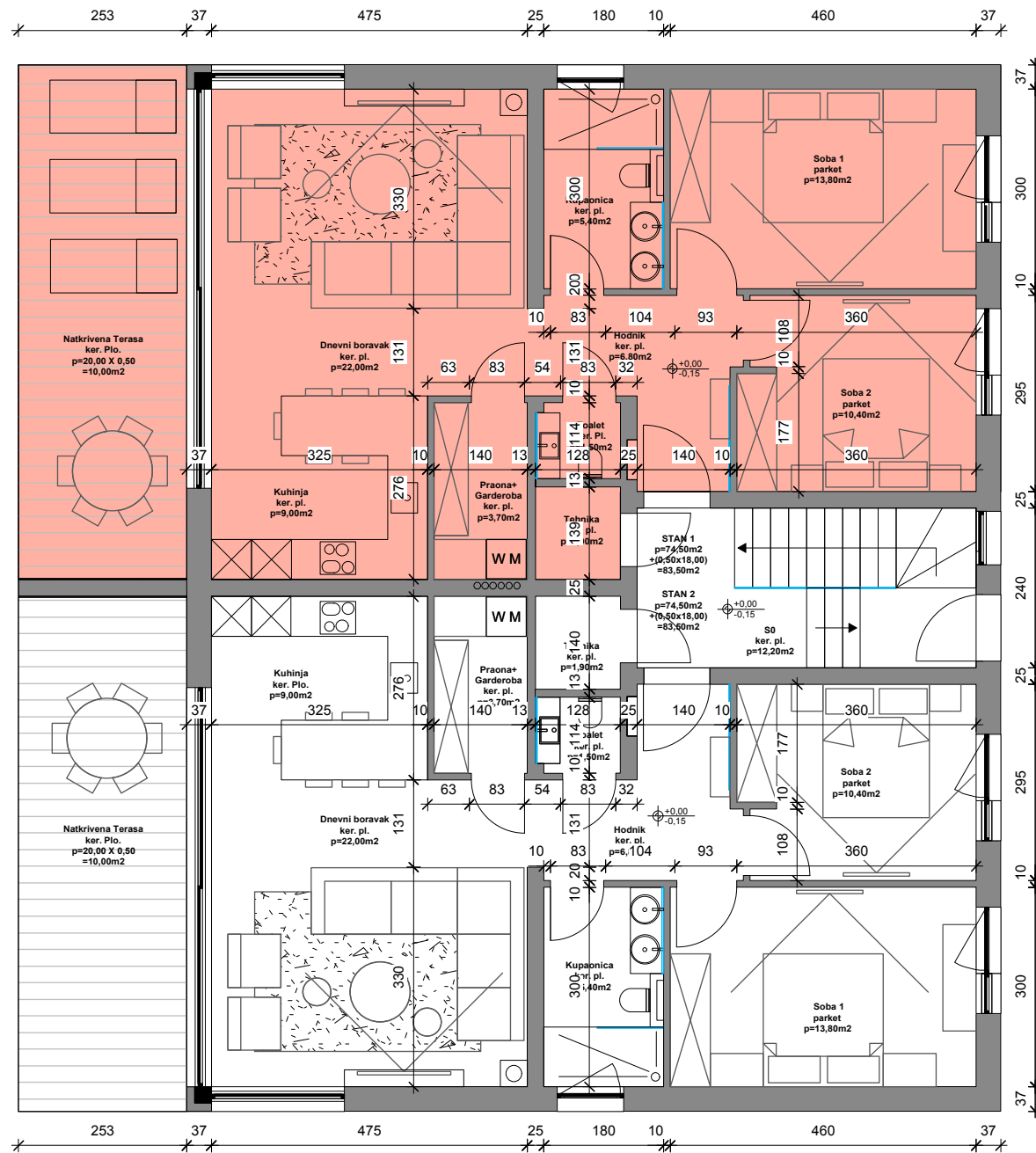
TLOCRT PRIZEMLJA:



PRIZEMLJE				
PRIZEMLJE, STAN 1				
OBRAČUN NETO POVRŠINE ZGRADA				
	naziv	neto	koef.	ukupno
1	Hodnik	6,80m ²	1,00	6,80m ²
2	Kupaonica	5,40m ²	1,00	5,40m ²
3	Garderoba	3,70m ²	1,00	3,70m ²
4	Toalet + Tehnika	3,40m ²	1,00	3,40m ²
5	Spavaca soba 1	13,80m ²	1,00	13,80m ²
6	Spavaca soba 2	10,40m ²	1,00	10,40m ²
7	Kuhinja + dnev.ni boravak	31,00m ²	1,00	31,00m ²
		74,50m²		74,50m²
8	Natkrivena Terasa	20,00m ²	0,50	10,00m ²
	UKUPNO STAN 1	94,50m²		84,50m²
	Vrt	123,00m ²		
	PM 1	12,50m ²		
	PM 2	12,50m ²		

PRIZEMLJE				
PRIZEMLJE, STAN 2				
OBRAČUN NETO POVRŠINE ZGRADA				
	naziv	neto	koef.	ukupno
1	Hodnik	6,80m ²	1,00	6,80m ²
2	Kupaonica	5,40m ²	1,00	5,40m ²
3	Garderoba	3,70m ²	1,00	3,70m ²
4	Toalet + Tehnika	3,40m ²	1,00	3,40m ²
5	Spavaca soba 1	13,80m ²	1,00	13,80m ²
6	Spavaca soba 2	10,40m ²	1,00	10,40m ²
7	Kuhinja + dnev.ni boravak	31,00m ²	1,00	31,00m ²
		74,50m²		74,50m²
8	Natkrivena Terasa	20,00m ²	0,50	10,00m ²
9	UKUPNO STAN 2	94,50m²		84,50m²
	Vrt	124,00m ²		
	PM 1	12,50m ²		
	PM 2	12,50m ²		

Zajednički prostori			
	neto	koef.	ukupno
Zajednički prostor prizemlje			
S0 STUBIŠTE	12,20m ²	1,00	12,20m ²
Sveukupno prizemlje	201,20m²		181,20m²



ZGRADA A TLOCRT PRIZEMLJA

PRIZEMLJA, STAN 1					
OBRAČUN NETO POVRŠINE ZGRADA					
	naziv	neto	koef.	ukupno	
PRIZEMLJE	1	Hodnik	6,80m ²	1,00	6,80m ²
	2	Kupaonica	5,40m ²	1,00	5,40m ²
	3	Garderoba	3,70m ²	1,00	3,70m ²
	4	Toalet + Tehnika	3,40m ²	1,00	3,40m ²
	5	Spavaca soba 1	13,80m ²	1,00	13,80m ²
	6	Spavaca soba 2	10,40m ²	1,00	10,40m ²
	7	Kuhinja + dnev.ni boravak	31,00m ²	1,00	31,00m ²
		74,50m²		74,50m²	
8	Natkrivena Terasa	20,00m ²	0,50	10,00m ²	
	UKUPNO STAN 1	94,50m²		84,50m²	
	Vrt	123,00m ²			
	PM 1	12,50m ²			
	PM 2	12,50m ²			