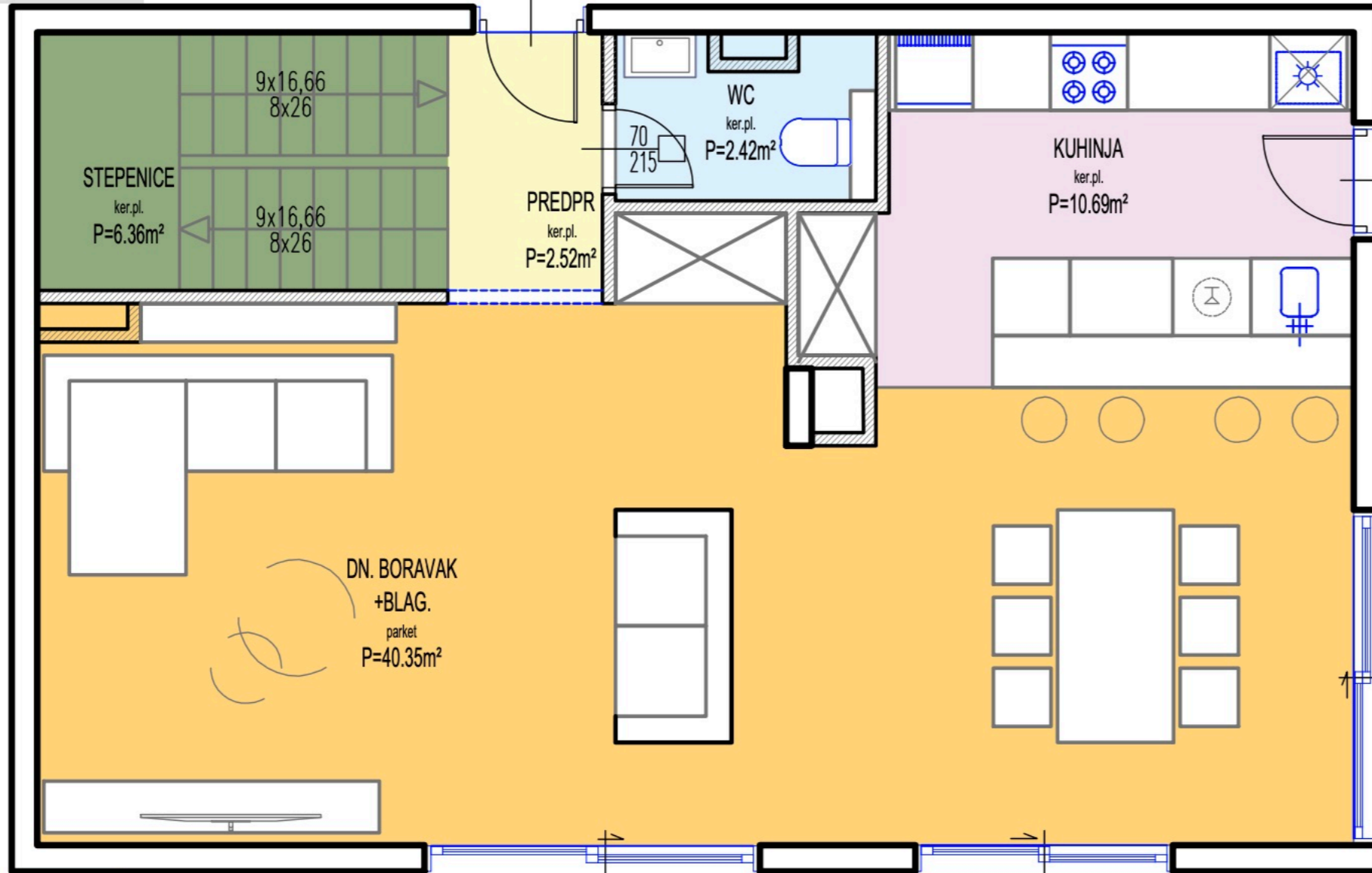


NATKRIVENA  
TERASA  
ker.pl.  
P=4.20m<sup>2</sup>



STEPENICE  
ker.pl.  
P=6.36m<sup>2</sup>

9x16,66  
8x26

9x16,66  
8x26

WC  
ker.pl.  
P=2.42m<sup>2</sup>

PREDPR  
ker.pl.  
P=2.52m<sup>2</sup>

KUHINJA  
ker.pl.  
P=10.69m<sup>2</sup>

DN. BORAVAK  
+BLAG.  
parket  
P=40.35m<sup>2</sup>

NENATKRIVENA  
TERASA  
ker.pl.  
P=51.55m<sup>2</sup>

ZELENILO  
P=1.30m<sup>2</sup>

NATKRIVENA  
TERASA  
ker.pl.  
P=31.90m<sup>2</sup>

