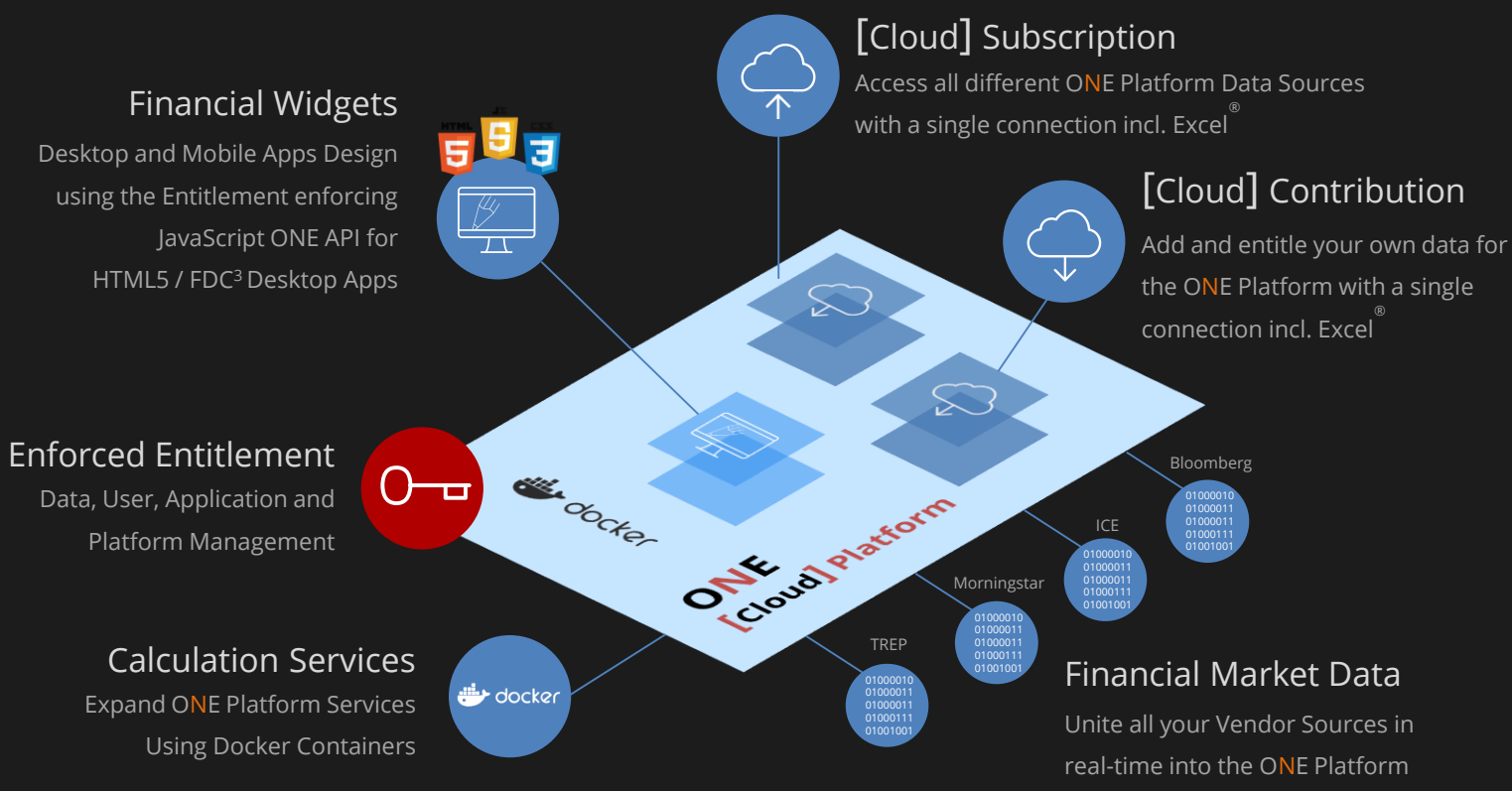


# ONE - Financial Data Enterprise Platform

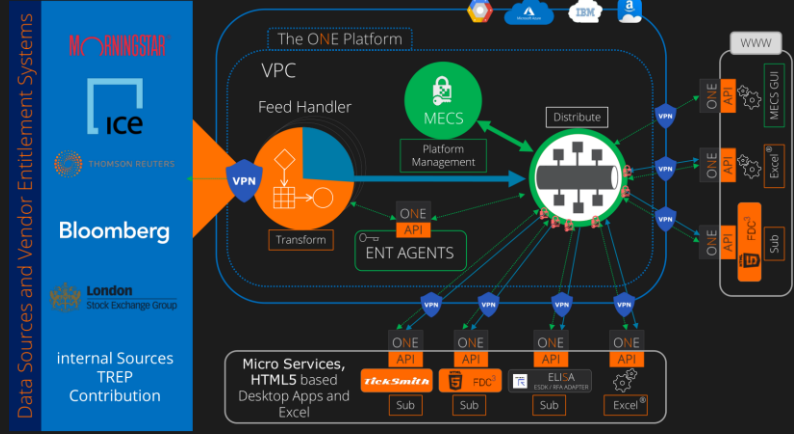
Distribution | Contribution | Entitlement | Excel® | API | Cloud



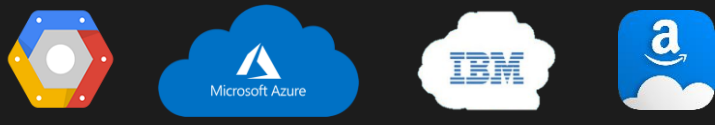
Financial Market Data Distribution Platform for Cloud, on-premises or mixed environments

# ONE - Financial Data Cloud Platform

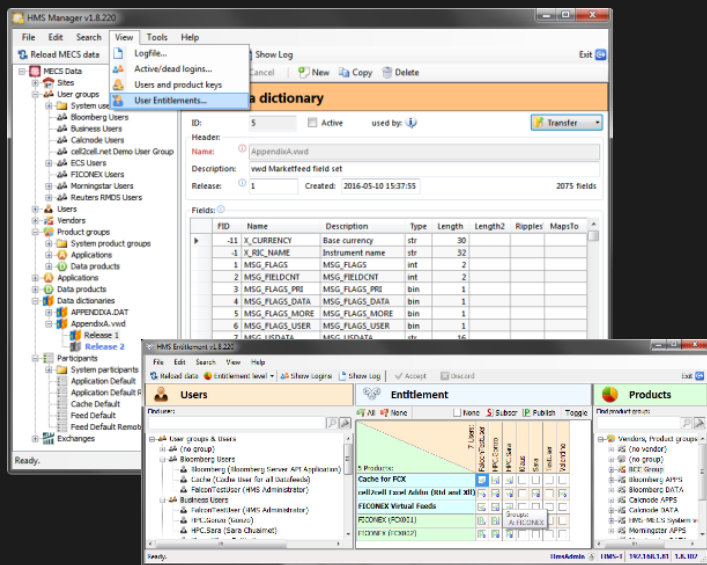
Distribution | Contribution | Entitlement | Excel® | API | Cloud



Multiple simultaneous Sources with Contribution



Cloud, On-Premises or Hybrid Deployments



ONE MECS - Platform and Entitlement Management



ONE API | Excel® Add-In | HTML5 & FDC<sup>3</sup>

## Feed Handlers & Last value Caches

- Easy access to any vendor Data
- Built-in entitlement
- Resilient Feed Handlers for all Sources
- Last values caches with auto failover
- Ready to go Contribution Platform with Publish permission checks
- TREP Applications Integration without coding
- Real-time Monitoring Data streams

## HW and/or Cloud based Distribution

- Middleware HW-Appliances, or
- Middleware Docker Container for high speed, resilient real-time Data Distribution with Built-in High Availability
- Direct connect for TREP Applications using ELISA

## Multi vendor Entitlement Control and Platform Management Service (MECS)

- MECS Entitlement Enforcement
- Authentication, Authorization and Platform Management
- Simultaneous Entitlement of Vendor and internal Data
- User Management and Connectivity control
- Entitlement Groups for easy User deployment
- Central, Release managed Data Dictionaries for all sources incl. internally generated data
- built-in High Availability and load balancing
- Exchange compliant reporting
- History of all MECS actions incl. Entitlement changes per user
- Daily snapshots of Entitlement world, Optional Data Usage tracking
- Position count and content based or Symbol based entitlement
- Vendor approved Entitlement Agents

## Client integration incl. Excel®

- Application Development with the ONE Platform Service API 
- For additional In-house applications, Web Solutions, Data Requestors, Message recorders, Calculation Services, Complex Event Processing, AI connect (Linux and Windows)
- Powerful HTML5 Desktop integration for the FDC<sup>3</sup> ecosystem (e.g. Glue42)
- Powerful Microsoft Excel® real-time integration for real-time subscriptions & contributions.

ONE Excel XLL available for Windows only