



Volkswagen Polo

Generated on 15/04/2026

VIN: WVVZZZAWZMY010575 Fuel: Gasoline Year: 2020 Transmission Type: Automatic

Scan for full report



Commercial use check

✔ No issues found

No records of commercial use found.

Mileage

✔ No issues found

Last recorded mileage: 12,144 km.

Legal status check

✔ No issues found

No financial or legal risk records found.

Damage

✔ No issues found

No damage or assessment records found.

Theft

✔ No issues found

No theft records found.

Emissions

✔ No issues found

Low CO₂ emission rating: 163.4 g/km.



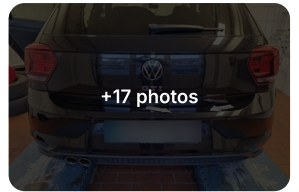
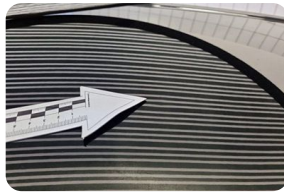
+44 Data sources

We checked 1000+ data sources in 48 countries

Photos

We found 27 photos of this vehicle. Scan report QR code to see all.

04/2023



Commercial use check

We checked if this vehicle was used for commercial purposes - like a taxi, rental, or another service vehicle. These vehicles often see heavier use, so it's worth looking closer for signs of wear.

✔ No issues found

No records of vehicle being used in irregular manner

Here's what we checked:

- Taxi ✔ No record found
- Transport ✔ No record found
- Rental ✔ No record found
- Police ✔ No record found
- Demo ✔ No record found
- Driving school vehicle ✔ No record found

Theft

We checked if the vehicle is currently listed as stolen, if it was ever reported stolen in the past, and whether it's been recovered.

✓ No issues found

We didn't find any records that the vehicle was stolen.

Summary

Police database stolen vehicle check completed in 7 countries:  +1

Here's what we checked:



Is it currently wanted as stolen? No record found



Was it stolen in the past? No record found No past theft records found for this vehicle.

Police database stolen vehicle check completed in:

 Slovakia  Hungary  Canada  Slovenia  Romania  Italy  Czechia

Mileage

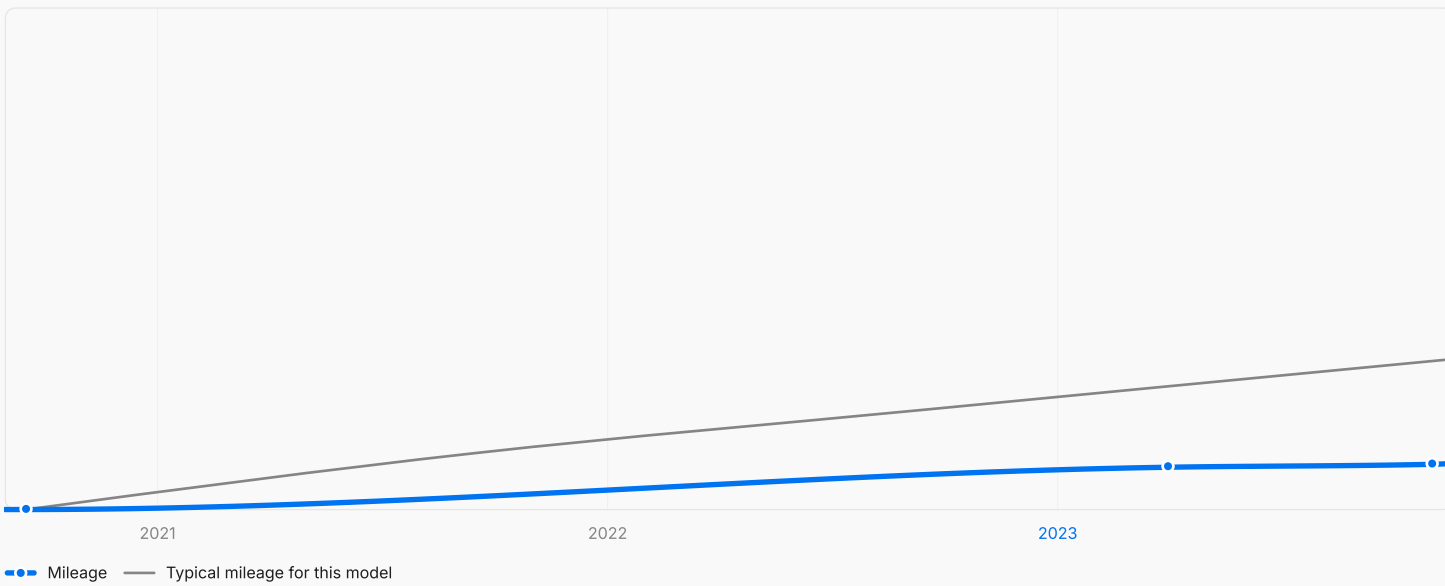
We checked if the mileage looks accurate or if it may have been tampered with.

Summary

- Last known mileage: 12,144 km
- Average mileage for similar models: 67,934 km
- 3 mileage records found

carVertical Insight

This vehicle's last recorded mileage is well below average for vehicles of the same age. It may have less wear than usual, but it's still a good idea to ask the seller why it was driven so little.



Odometer records

09/2020	10 km
04/2023	11,357 km
11/2023	12,144 km

Driving habits

09/2020 - 04/2023	<input checked="" type="checkbox"/> Normal driving	367 km/month
04/2023 - 11/2023	<input checked="" type="checkbox"/> Limited driving	110 km/month

Legal status check

We checked if the vehicle passed technical inspections and whether it was marked as scrapped.

✓ No issues found

No records about the legal status of this vehicle were found

Legal

✓= Passed technical inspection (MOT)? No record found



Was it scrapped? No record found

Recommended service schedule

For full past and upcoming service details, view the digital report.

Summary

Based on recorded mileage, the next recommended service is due in 17,856 km

Next recommended service at 30,000 km

What should be serviced:

Service time approx. 66 min

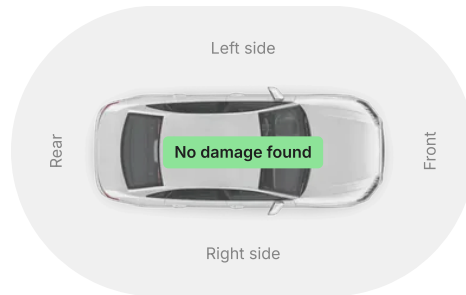
Towing hitch (Lubricate) +51 service items

Damage

Has this vehicle been damaged in the past? What was the value of the damages?

No issues found

No damage or assessment records found



Occasional inaccuracies can occur, especially when checking older vehicles. Underground repair shops may illegally disguise vehicle defects or damages, not recording their existence anywhere. Sometimes, even vehicle VIN plates may be replaced. We have a variety of methods to detect even such crimes, but it's impossible to provide a 100% guarantee.

Natural disaster exposure

We checked if the vehicle was located in an area hit by a natural disaster at the time it happened.

No issues found

This vehicle's location was not recorded in the area of a natural disaster.

Market price

We checked how this vehicle's market price has changed over time, based on available historical data and price estimates.

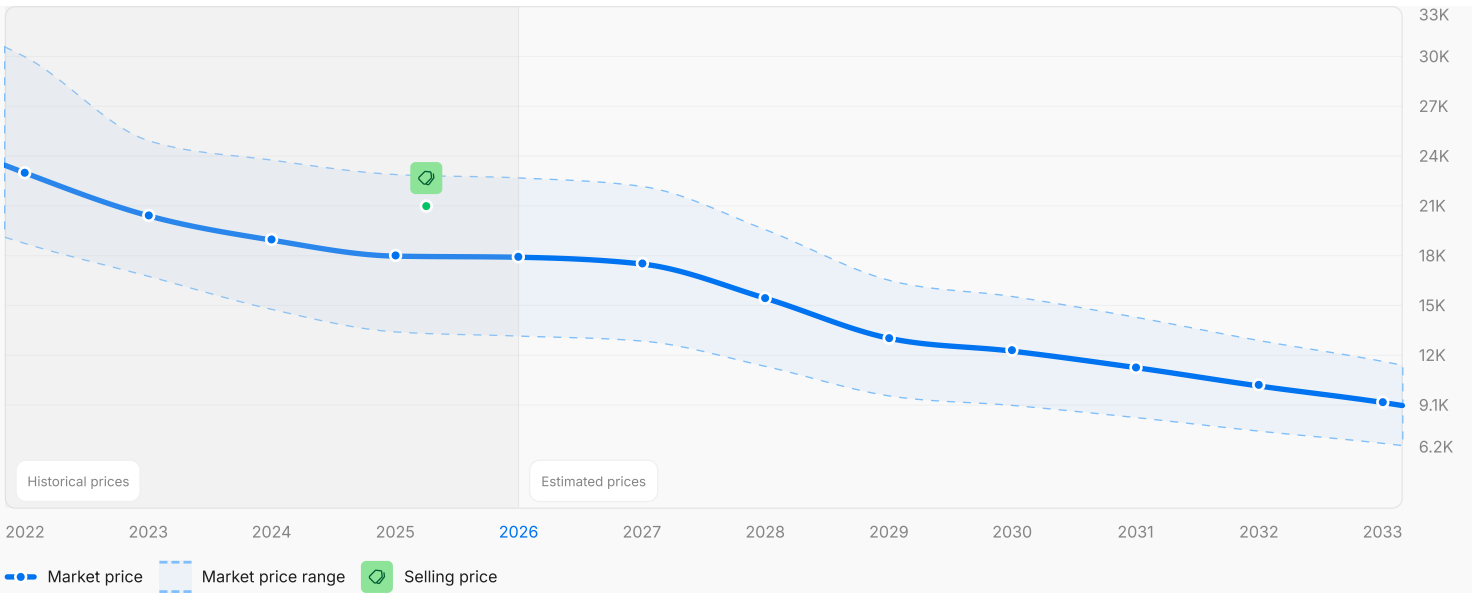
The timeline shows a limited period and does not reflect the vehicle's full lifetime pricing.

Summary

- Last known selling price: €20,900
- Average market price for such vehicle: €17,930
- Be cautious of hidden issues if the vehicle was on sale for significantly less than the current price!

Criteria for market price evaluation:

Make: Volkswagen Model: Polo Fuel type: Gasoline Transmission type: Automatic Year: 2020 Market: Europe



Year	Market price	↘ Lowest market value	↗ Highest market value
● 2022	€22,948	€18,750	€29,850
● 2023	€20,400	€16,800	€24,870
● 2024	€18,950	€14,831	€23,710
● 2025	€17,998	€13,490	€22,850
◻ 04/2025 Selling price	€20,900		
● 2026	€17,930	€13,243	€22,650
● 2027	€17,529	€12,947	€22,143
● 2028	€15,493	€11,443	€19,571
● 2029	€13,113	€9,685	€16,564
● 2030	€12,345	€9,118	€15,594
● 2031	€11,368	€8,396	€14,361
● 2032	€10,273	€7,588	€12,978
● 2033	€9,292	€6,863	€11,738

Market price insights



Price trend forecast

This vehicle is expected to lose -48% of its market price over the next 7 years.

Note: Forecasts are based on current market trends and historical data. Actual resale value may change due to market shifts, condition, location, or other factors.

Emissions

We analysed how much CO₂ this car model typically produces and what taxes or fees may apply.



carVertical Insight

This vehicle has average emissions. It will likely incur standard emission taxes.

CO₂ emissions

Your vehicle CO₂ emissions **163.4 g/km** Class **D**

Up to 120

120 - 140

140 - 155

155 - 165

165 - 190

190 - 225

225 +

Specs & equipment






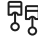
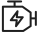






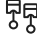

The vehicle's technical specifications and original equipment on record.

This section includes simplified AI-generated descriptions to help you better understand each vehicle feature.

Summary

Make sure the vehicle's specs and equipment match what the seller told you.

Identification and technical specifications

 Make Volkswagen	 Model Polo	 Body type Hatchback
 Manufacture year 2020	 Model year 2021	 Powertrain displacement 2 L
 Powertrain power 147 kW (197 hp / 200 PS)	 Fuel type Gasoline	 Transmission type Automatic
 Drive type FWD	 Color Black	 Number of doors 5
 Steering wheel placement LHD	 Number of cylinders 4	 Number of gears 6

Equipment

As received from the manufacturer

P00A Rear overhang, short

✦ Short rear overhang design

P0AT Front stabilizer bar

✦ Front stabilizer bar

P0ES Dual-clutch transmission DSG DQ250

✦ Dual-clutch transmission DSG DQ250

P0K0 Without alternative drive system

✦ Alternative Drive System: Not included

P0N2 Heavy-duty rear axle

✦ Heavy-duty rear axle: The vehicle's rear axle is designed to handle heavy-duty applications.

P0P5 Chromed twin tailpipe, left

✦ Dual chromed tailpipe on the left side of the vehicle

P0VC Manual in German

✦ Manual in German

P0YN Weight range 13 installation control only, no requirement forecast

✦ Control for installation weight range 13 without future requirement forecast

P1AS Electronic Stability Control w/ driver steering recommendation, ABS, ASR, EDL and EDTC

✦ Electronic Stability Control system with multiple driving aids for safety

P1E5 Activated carbon canister (Evaporative Emission Control System (EVAP))

✦ Activated carbon canister (Evaporative Emission Control System (EVAP))

P0A2 4 doors

✦ The vehicle has 4 doors

P0B1 Wheelbase

✦ Wheelbase

P0FB Pamplona manufacturing sequence

✦ Pamplona manufacturing sequence: Indicates the manufacturing sequence or location.

P0KA Without decals and emblems

✦ Without decals and emblems

P0NH Nameplate set "GTI"

✦ Designated as 'GTI'

P0TD Carpet mats in front and rear

✦ Carpet Mats: Front and rear

P0Y1 Standard climatic zones

✦ Standard climatic zones

P1A7 Fuel system for fuel-injected SI engine (tropicalized)

✦ Tropicalized fuel system

P1D0 Without trailer hitch

✦ Without trailer hitch

P1EX Special identification label for EC for M1 passenger vehicles

✦ Special identification label for EC for M1 passenger vehicles

P1G8 Tire Mobility Set: 12-volt compressor and tire sealant

✦ Tire Mobility Set: Compressor and tire sealant

P1NL Trims for alloy wheels

✦ Trims for alloy wheels

P1S1 Tool kit and jack

✦ Comes with a tool kit and jack

P1T9 First aid kit, warning triangle and safety vest

✦ First aid kit, warning triangle, and safety vest included

P1X0 Front-wheel drive

✦ Front-wheel drive

P1Z0 Initial standard fuel filling

✦ Initial standard fuel filling

P2A0 Without delivery equipment

✦ Without delivery equipment

P2FW Leather-wrapped multi-function sports steering wheel with shifting paddles

✦ Steering wheel with leather wrapping for a sporty feel, includes paddles for shifting gears

P2JD Bumpers in sports style, air intakes in honeycomb structure, black sill extension

✦ Sporty bumpers, honeycomb structure on air intakes, and black sill extensions

P2V5 Fresh air intake system with combination filter

✦ Fresh air intake system with combination filter

P31K License plate carrier in front and rear (ECE)

✦ Front and rear license plate carriers (ECE)

P3C7 3-point seat belt for center rear seat

✦ Center rear seat has a 3-point seat belt

P3GD Luggage compartment floor

✦ Flooring for luggage compartment

P3L3 Front seats with height adjustment

✦ Front Seats: Height adjustable

P3Q6 3 head restraints in rear

✦ 3 head restraints in rear

P3U1 Luggage compartment cover

✦ Luggage compartment cover: Cover for the luggage compartment

P4A3 Heated front seats

✦ Heated front seats: Front seats equipped with heating function

P4BF Emission standard EU6 DG

✦ Meets emission standard EU6 DG

P4GF Laminated safety glass windshield, heat-insulating

✦ Heat-insulating laminated safety glass windshield

P4L6 Auto-dimming interior rearview mirror

✦ Interior Rearview Mirror: Auto-dimming

P1KE Disc brakes in rear, red brake calipers

✦ Rear disc brakes with eye-catching red brake calipers

P1PE Wheel locks with extended theft protection

✦ Wheel Locks: Extended theft protection

P1SA Without additional front underbody guard

✦ Without additional front underbody guard

P1TB Vehicle class differentiation - 2G0- for build status Europe

✦ Vehicle type designation specific to European build status

P1Y3 Electronic differential lock XDS

✦ Electronic Differential Lock: XDS

P1ZU Disc brakes in front

✦ Front brakes that use discs for stopping the vehicle

P2C2 Height and longitudinally adjustable steering column

✦ Steering column adjustable for height and longitudinal position

P2H4 "Sport Select" Suspension incl. Driving Mode Selection

✦ Sport suspension with driving mode selection feature

P2KW Labels in German, French and Dutch

✦ Labels in German, French and Dutch: Labels provided in multiple languages

P2WL Winter wheels "Merano" (additional) 4 alloy wheels 6J x 16 snow tires 185/60 R16 H

✦ Winter wheels 'Merano' for additional use, consisting of 4 alloy wheels sized 6J x 16 and snow tires in 185/60 R16 H

P3A0 ISOFIX anchorage points for mounting 2 child seats on rear seats, also for i-Size child seats

✦ ISOFIX anchorage points for mounting 2 child seats on rear seats, also for i-Size child seats - Universal anchorage system for securing child seats on rear seats

P3FA Without roof insert (standard roof)

✦ Without roof insert (standard roof)

P3H0 Non-folding front passenger seat backrest

✦ Front Passenger Seat: Non-folding backrest

P3NZ Unsplit rear bench seat, asymmetric split folding backrest

✦ Unsplit rear bench seat

P3QT 3-point seat belts in front with height adjustment and seat belt pretensioners

✦ Front Seat Belts: 3-point with height adjustment and pretensioners

P3ZU 3-point seat belts with seat belt pretensioners for the outer rear seats

✦ 3-point seat belts with pretensioners for outer rear seats

P4AP Door and side trim panel

✦ Door and side trim panel: Trim panels installed on the doors and sides of the vehicle.

P4F2 Keyless locking and starting system Keyless Access with SAFELOCK

✦ Keyless locking and starting system Keyless Access with SAFELOCK - Keyless entry and ignition system with enhanced security feature

P4KF Privacy glass for rear side windows and rear window

✦ Privacy Glass: Rear side windows and rear window

P4N1 Foamed dashboard

✦ Foamed dashboard

P4P0 Rear floor panel module, type 1

✦ Rear Floor Panel: Type 1 module

P4U5 Map pockets on the back of each front seat

✦ Map pockets located on the back of each front seat

P4X3 Curtain airbag system for front and rear passengers incl. side airbags in front

✦ Airbag System: Curtain for front and rear passengers, side airbags in front

P5C0 Without special body measures

✦ Special Body Measures: Not included

P5K7 Transport protection film (minimum protection) with additional transport protection measures

✦ Transport protection film (minimum protection) with additional transport protection measures

P5RQ Right exterior mirror, convex

✦ Right exterior mirror, convex

P5XJ Illuminated vanity mirrors in sun visors

✦ Sun Visors: Illuminated Vanity Mirrors

P6E3 Front center armrest, longitudinally adjustable, with storage compartment

✦ Adjustable front center armrest with storage compartment

P6K4 Autonomous Emergency Braking Front Assist (for Adaptive Cruise Control ACC up to 210 km/h)

✦ Front Assist autonomous emergency braking system

P6PC Hand brake lever handle in leather

✦ Hand brake lever handle in leather: Hand brake lever handle covered in leather

P6T1 LED light unit in front footwell

✦ LED light unit in front footwell - LED lighting in the front footwell area

P6YD Exterior mirrors, power-adjustable, folding and heated, w/ front passenger exterior mirror lowering function

✦ Power-adjustable, folding, heated exterior mirrors

P7E0 Without heat accumulator/auxiliary heater

✦ Without heat accumulator/auxiliary heater

P7L6 Start-stop system with generative braking

✦ Start-stop system with generative braking

P7UT Navigation system "Discover Media" incl. Streaming & Internet

✦ Navigation system with streaming and internet features

P7X2 Park Distance Control - warning signals for obstacles in the front and rear

✦ Park Distance Control: Front and rear warning signals

P8AR Radio

✦ Basic radio included

P8G0 Without light control

✦ Without light control

P8IT LED headlamps with LED separate daytime running light

✦ The car features LED headlamps with a separate daytime running light also in LED.

P8M1 Rear window wiper with intermittent control

✦ Rear Window Wiper: Intermittent control

P4R4 Power windows

✦ Power Windows

P4UF Driver and front passenger airbag with front passenger airbag deactivation

✦ Driver and front passenger airbag with front passenger airbag deactivation

P51A Without adhesive film

✦ No adhesive film included

P5D1 Carrier frequency 433.92 MHz-434.42 Mhz

✦ Carrier frequency 433.92 MHz-434.42 Mhz

P5MR Decorative inserts in Velvet Red for dashboard and front door trim panels

✦ Velvet Red decorative inserts for dashboard and front door trim panels

P5SL Aspherical exterior mirror on driver side

✦ Aspherical exterior mirror on driver side

P5ZF Safety-optimized front head restraints

✦ Front Head Restraints: Safety-optimized

P6FF Body-colored exterior mirror housings and door handles

✦ Exterior Mirrors and Door Handles: Body-colored

P6NW Titanium Black headliner

✦ Titanium Black headliner - Interior headliner finished in Titanium Black color

P6Q5 Gearshift knob in aluminum-leather combination

✦ Gearshift knob crafted in aluminum-leather combination

P6U0 Without additional seals outside

✦ Excludes additional seals on the exterior

P7AS Anti-theft alarm system with interior monitoring, backup horn and towing protection

✦ Anti-theft alarm system with interior monitoring, backup horn, and towing protection

P7K1 Tire pressure monitoring system

✦ Vehicle includes a tire pressure monitoring system

P7P4 Lumbar supports in front

✦ Lumbar Supports: In front

P7W2 Proactive passenger protection system in combination with Front Assist

✦ Proactive passenger protection system with Front Assist

P7Y8 Blind Spot Monitor with Rear Traffic Alert

✦ Blind Spot Monitor with Rear Traffic Alert for enhanced safety

P8FC Installation of SLI battery in rear, without second battery

✦ Installation of SLI battery in rear, without second battery

P8GU Alternator 140 A

✦ Alternator capacity is 140 A

P8K3 Aut. headlight control w/ separate daytime running light, Leaving Home and manual Coming Home feature

✦ Headlight Control: Automatic with daytime running light

P8N6 Rain sensor

✦ Rain Sensor: Included

P8Q3 Dynamic headlight range control

✦ Dynamic headlight range control included

P8SK LED rear combination lamps

✦ LED rear combination lamps

P8TC Rear fog lamp for driving on the right

✦ Rear fog lamp for driving on the right

P8WH Front fog lamps and cornering light

✦ Fog Lamps: Front with cornering light

P8Y1 Two-tone horn

✦ Two-tone horn

P8ZQ Diversity antenna for FM reception

✦ FM Antenna: Diversity

P9E1 Luggage compartment lighting

✦ Luggage compartment lighting: Lighting features installed in the luggage compartment of the vehicle.

P9M0 Without auxiliary heater/parking heater

✦ Auxiliary Heater/Parking Heater: Not included

P9S0 Multi-color Digital Cockpit Pro, selection of different info profiles possible

✦ Multi-color Digital Cockpit Pro

P9VG Sound system "beatsAudio", 300 W total power output, subwoofer, digital 8-channel amplifier, 6 speakers

✦ High-quality sound system by beatsAudio with 300W power, subwoofer, amplifier, and 6 speakers

P9ZV Mobile phone interface with inductive charging function

✦ Allows mobile phone interface with wireless charging capability

PA8H GTI

✦ GTI model designation

PAW4 "Standard Plus" version

✦ 'Standard Plus' version

PB0A Part set without country-specific prescriptive standard

✦ Part Set: Without country-specific prescriptive standard

PCQ4 4 alloy wheels "Brescia" 7.5J x 18, Black, diamond-turned surface

✦ Set of 4 alloy wheels "Brescia" 7.5J x 18 with black diamond-turned finish

PE0A No special edition

✦ No special edition

PEL5 Online service, with OCU, with head unit coding, without engine immobilizer interconnection

✦ Online Service: With OCU and head unit coding

PER1 Regional code "ECE" for radio

✦ Regional Code: ECE for radio

PFC1 Customized installation

✦ Customized installation - Vehicle customized to specific requirements or preferences

P8S6 LED interior lights with switch-off delay and dimmer, 2 LED reading lights in front and rear

✦ LED interior lights with switch-off delay and dimmer, includes 2 LED reading lights in front and rear

P8T8 Adaptive Cruise Control ACC stop & go incl. speed limiter

✦ Cruise Control: Adaptive ACC with stop & go

P8W1 Warning light for washer fluid level

✦ Warning light for washer fluid level: Warning light for low washer fluid level

P8X0 Without headlamp washer system

✦ Without headlamp washer system

P8Z5 Not hot country

✦ Not hot country

P9AK Air Care Climatronic 2 zone automatic climate control with enhanced air filter with activated carbon

✦ Air Care Climatronic 2 zone automatic climate control with enhanced air filter

P9JA Non-smoker's package: tray and 12-V outlet in front

✦ Non-smoker's Package: Tray and 12-V Outlet

P9P9 Warning signal and warning light for front and rear seat belts not fastened

✦ Warning signal and warning light for front and rear seat belts not fastened - Alert system for seat belt status

P9T0 Without heated washer nozzles

✦ Without heated washer nozzles

P9WJ App-Connect incl. App-Connect Wireless for Apple CarPlay and Android Auto

✦ App-Connect for Apple CarPlay and Android Auto

PA60 Category 0

✦ Category: 0

PAV1 Driving on the right

✦ Driving on the right

PB01 Type approval country Germany

✦ Type approval country Germany

PC21 Operating permit, alteration

✦ Operating permit for alterations

PD2L 4-cylinder SI engine 2.0 I FSI, 147 kW

✦ Powerful 4-cylinder SI engine 2.0 I FSI generating 147 kW of power

PEF1 ECO function

✦ Function: ECO

PEM1 Driver alert system

✦ Driver alert system

PF0A No special purpose vehicle, standard equipment

✦ No special purpose vehicle, standard equipment

PG12 Shock absorption in front

✦ Front shock absorption system for enhanced comfort and stability

PG1A 6-speed automatic transmission or DSG note: family EDF

✦ 6-speed automatic transmission or DSG

PI11 Tires 215/40 R18

✦ High-performance tires sized at 215/40 R18

PK8G Hatchback

✦ Body Style: Hatchback

PKK3 Refrigerant R1234yf

✦ Refrigerant Type: R1234yf

PL15 Suspension range 15 installation control only, no requirement forecast

✦ Installation control for suspension range 15, no need for forecast

PNY0 Standard battery/alternator capacity

✦ Standard battery/alternator capacity

PPDB "Sport Select" Suspension

✦ Sport-tuned suspension with driving mode selection capability

PPFA Blind Spot Monitor with Rear Traffic Alert

✦ Equipped with Blind Spot Monitor and Rear Traffic Alert

PPJB Brescia 7.5J x 18, tires 215/40 R18

✦ Includes Brescia 7.5J x 18 alloy wheels and tires sized at 215/40 R18

PPWA Winter wheels "Merano" (additional) 4 alloy wheels 6J x 16 snow tires 185/60 R16 H

✦ Winter wheels 'Merano' for additional use, including 4 alloy wheels sized 6J x 16 and snow tires in 185/60 R16 H

PQG1 LongLife Service Regime

✦ Service Regime: LongLife

PQI6 Service indicator 30 000 km or 2 years (variable)

✦ Service indicator 30 000 km or 2 years (variable)

PQK0 Without multifunction camera

✦ No multifunction camera

PQQ3 Ambient lighting

✦ Ambient Lighting

PQV3 Digital radio reception DAB+

✦ Digital radio reception feature DAB+

PRBD Navigation system "Discover Media" incl. Streaming & Internet

✦ Navigation system with streaming and internet features

PTD3 4-cylinder SI engine 2.0 I

✦ 4-cylinder SI engine 2.0 I

PU9C 2 USB-C ports IN the front, 2 USB-C charging sockets ON the center console IN the rear

✦ Front has 2 USB-C ports, rear center console has 2 USB-C charging sockets

PUG1 Hill start assist

✦ Hill start assist: The vehicle is equipped with a feature to assist in hill start situations.

PVF2 Pedals in brushed stainless steel

✦ Brushed stainless steel pedals

PGP0 Vehicles without special upgrade measures

✦ Vehicles without special upgrade measures

PJ2D Battery 380 A (68 Ah)

✦ Battery 380 A (68 Ah)

PKA1 Rear view camera system

✦ Rear view camera system

PL0L Left-hand drive

✦ Left-hand drive

PN2T Inserts of front seats and outer rear seats in fabric "Clark"

✦ Seat inserts in the front and outer rear seats are made of fabric called 'Clark'

PNZ4 Emergency call service; no registration required, service is activated upon delivery

✦ Emergency Call Service: Activated upon delivery

PPF2 Adaptive Cruise Control ACC up to 210 km/h and Autonomous Emergency Braking

Front Assist

✦ Includes Adaptive Cruise Control ACC up to 210 km/h and Autonomous Emergency Braking Front Assist

PPH3 Air conditioning system Climatronic

✦ Climate control system with dual-zone settings

PPLA Lights & Vision package

✦ Lights & Vision Package

PQ4P Premium sports seats in front

✦ Premium sports seats for front occupants

PQH1 Voice control

✦ Voice control feature

PQJ3 Chrome elements on power mirror and window regulator switches, on front vents on driver and front passenger side

✦ Chrome accents on power mirror and window regulator switches, as well as front vents

PQN4 Storage compartment under front seat(s)

✦ Storage compartment located under front seats

PQR8 Without dynamic road sign display

✦ Dynamic Road Sign Display: Not included

PQZ7 Power steering

✦ Power steering

PSZ9 Delivery "Autostadt Wolfsburg"

✦ Delivery from 'Autostadt Wolfsburg'

PU5A Instrument cluster with electronic speedometer, odometer and trip odometer, tachometer

✦ Instrument Cluster: Electronic speedometer with tachometer

PUB2 Sports suspension, body lowered by approx. 15 mm

✦ Sports suspension that lowers the body by approximately 15 mm

PV0A Tires without specification of tire brand

✦ Tires without specification of tire brand

PVL3 Pedestrian Monitoring

✦ Pedestrian Monitoring

PVT2 Front scuff plates in aluminum, with GTI logo

✦ Aluminum front scuff plates featuring GTI logo

PWLL LED headlamps

✦ LED headlamps for improved visibility

PY5U Model year change 2021 VII

✦ Model year change to 2021 VII

PY8S Model year change 2021 II

✦ This vehicle has been updated to the 2021 model year, with some improvements in the second edition.

PY8U Model year change 2021 IV

✦ Model year change set for 2021 IV

00A Rear overhang, short

✦ Short rear overhang design.

0AT Front stabilizer

✦ Helps to maintain vehicle stability by reducing body roll during turns

0ES Installation differentiation for transmission DQ250 -- vehicle components --

✦ Installation differentiation for transmission DQ250 -- vehicle components --

0K0 Without alternative drive system

✦ No Alternative Drive System Installed

0N2 Heavy-duty rear axle

✦ Heavy-Duty Rear Axle

0P5 Rear exhaust tailpipe (oval)

✦ Oval-shaped rear exhaust tailpipe

0VC Information kit in German

✦ Information Kit in German Language

0YN Weight range 13 installation control only, no requirement forecast

✦ Weight range is set at 13 with installation control only.

1AS Electronic stability control (ESC)

✦ Electronic stability control (ESC)

1E5 Activated carbon canister for intensified evaporation system with on-board diagnostic system 2

✦ Activated Carbon Canister for Intensified Evaporation System with On-Board Diagnostic System 2

1G8 Breakdown kit

✦ Breakdown Kit Included

1NL Trims for alloy wheels

✦ Alloy Wheel Trims Included

1S1 Tool kit and jack

✦ Tool kit and jack

1T9 First aid kit with warning triangle and safety vest

✦ First aid kit with warning triangle and safety vest

1X0 Front wheel drive

✦ Front Wheel Drive Configuration

PWD1 Anti-theft alarm system

✦ Anti-theft alarm system

PX0A Equipment options subset for Germany

✦ Equipment options subset for Germany

PY5Z Model year change 2021 XII

✦ Model year change set for 2021 XII

PY8T Model year change 2021 III

✦ Model year change set for 2021 III

PYOR Preparation for We Connect and We Connect Plus

✦ Preparation for We Connect and We Connect Plus

0A2 4 doors

✦ 4 Doors Equipped

0B1 Wheelbase

✦ Wheelbase

0FB Pamplona manufacturing sequence

✦ Manufacturing sequence at the Pamplona plant

0KA Without decals and emblems

✦ Without decals and emblems

0NH Nameplate set "GTI"

✦ Golf GTI nameplate set

0TD Floor mats in front and rear

✦ Front and rear floor mats

0Y1 Standard climatic zones

✦ Standard Climatic Zones Configured

1A7 Fuel system for fuel-injected engine (tropicalized)

✦ Fuel System for Fuel-Injected Engine (Tropicalized)

1D0 Without trailer hitch

✦ Without trailer hitch

1EX Special identification plate for EC for M1 passenger vehicle

✦ Special Identification Plate for EC M1 Passenger Vehicle

1KE Disk brakes in rear

✦ Rear Disk Brakes Included

1PE Wheel bolts with anti-theft protection (unlockable)

✦ Wheel bolts with anti-theft protection

1SA Without additional front underbody guard

✦ Additional Front Underbody Guard Not Included

1TB Vehicle class differentiation -2G0- for build status Europe

✦ Differentiates the vehicle class for specific build status in Europe

1Y3 Electronic differential lock XDS dynamic traction control

✦ Dynamic Traction Control and Differential Lock System Implemented

1Z0 Initial standard fuel filling

✦ Standard Initial Fuel Filling

2A0 Without delivery equipment

✦ No Additional Delivery Equipment Included

2FW Leather-wrapped multifunction sports steering wheel w/ tiptronic

✦ Leather-wrapped sports steering wheel with paddle shifters

2JD Sports bumpers

✦ Sports bumpers for added sporty look

2V5 Fresh air intake system with combination filter

✦ Fresh air intake system with combination filter

31K Front and rear license plate carrier (ECE)

✦ Front and rear license plate carrier as per European regulations

3C7 3-point seat belt for center rear seat

✦ 3-Point Seat Belt for Center Rear Seat

3GD Plane rear cargo area

✦ Plane rear cargo area

3L3 Manual height adjustment for front seats

✦ Manual height adjustment for front seats

3Q6 Three rear head restraints

✦ Three Rear Head Restraints

3U1 Folding trunk cover

✦ Folding trunk cover

4A3 Seat heater for front seats separately controlled

✦ Separately Controlled Seat Heaters for Front Seats

4F2 Central locking system "Keyless Entry"

✦ Keyless entry system for convenient access.

4KF Side windows in heat-insulating glass, from B-pillar and rear window dark tinted

✦ Dark Tinted Heat-Insulating Side Windows

4N1 Padded dashboard

✦ Padded Dashboard Design

4R4 Power windows with comfort operation and circuit breaker

✦ Power Windows with Comfort Operation and Circuit Breaker

4UF Driver and front passenger airbag with front passenger airbag deactivation

✦ Driver and Front Passenger Airbag with Front Passenger Airbag Deactivation

51A Without adhesive film

✦ Without adhesive film

5D1 Carrier frequency 433.92 MHz-434.42 Mhz

✦ Carrier frequency 433.92 MHz-434.42 MHz

5MR Decorative inserts

✦ Adds decorative inserts for a stylish touch

5SL Left exterior mirror: aspherical

✦ Left exterior mirror: Aspherical

1ZU Disk brakes in front

✦ It is equipped with disk brakes in the front for improved braking performance.

2C2 Axial and vertical adjustable steering column (reinforced)

✦ Steering column that can be adjusted both horizontally and vertically, with added reinforcement for durability

2H4 Driving Profile Selection and hydraulic damper control

✦ Driving profile selection and hydraulic damper control for customizable driving experience.

2KW Labels/plates in German, French, and Dutch

✦ Labels/Plates in German, French, and Dutch Languages

2WL Additional snow tires

✦ Additional snow tires included

3A0 Child seat anchor for child seat system I-size, 2x top tether

✦ Child seat anchor for I-Size child seat system, with 2 top tether anchor points

3FA Without roof insert (standard roof)

✦ No Roof Insert Provided

3H0 Without backrest release for front seats

✦ No Backrest Release for Front Seats

3NZ Unsplit rear seat bench unsplit, split folding backrest

✦ Unsplit Rear Seat Bench Unsplit, Split Folding Backrest

3QT 3-point seat belts in front, with pretensioner and height adjustment

✦ Front 3-Point Seat Belts with Pretensioner and Height Adjustment

3ZU 3-point seat belts, outer rear with ECE label

✦ Outer Rear 3-Point Seat Belts with ECE Label

4AP Door and side trim panel

✦ Door and side trim panel included

4GF Windshield in heat-insulating glass

✦ Windshield in heat-insulating glass

4L6 Breakaway interior rearview mirror, auto-dimming

✦ Breakaway interior rearview mirror, auto-dimming

4P0 Rear floor panel module, type 1

✦ Type 1 rear floor panel module included.

4U5 Luggage pockets on backrest

✦ Luggage pockets on backrest

4X3 Side airbag in front, with curtain airbag

✦ Front Side Airbag with Curtain Airbag

5C0 Without special body measures

✦ No Special Body Measures Applied

5K7 Transport protection film (minimum protection) with additional transport protection measures

✦ Transport Protection Film with Additional Measures

5RQ Right exterior mirror, convex

✦ Right exterior mirror, convex

5XJ Sun visors with mirror, illuminated, with airbag label on sun visor and B-pillar

✦ Illuminated sun visors with mirror and airbag label

5ZF Front head restraints

- Front Head Restraints Included

6FF Body-colored exterior mirror housings and various add-on parts

- Body-Colored Exterior Mirror Housings and Add-On Parts

6NW Unsplit molded headliner

- Unsplit molded headliner in the interior

6Q5 Sports gearshift knob

- Sports-style gearshift knob

6U0 Without additional seals outside

- No additional seals outside

7AS Anti-theft alarm system, interior monitoring, backup horn, and towing protection

- Anti-theft alarm system with interior monitoring, backup horn, and towing protection

7K1 Direct tire pressure monitoring system

- Direct Tire Pressure Monitoring System

7P4 Manually adjustable lumbar support in front seats

- Manually adjustable lumbar support in front seats

7X2 Park distance control in front and rear

- Front and Rear Park Distance Control

8AR Radio "gamma" with removable operating panel

- Gamma Radio with Removable Operating Panel Installed

8G0 Without light control

- Without light control

8IT LED headlamps

- LED Headlamps Equipped

8M1 Rear window wiper and washer system with intermittent control

- Rear Window Wiper and Washer System with Intermittent Control

8Q3 Automatic headlight range adjustment dynamic (self-adjusting while driving)

- Automatic Headlight Range Adjustment Dynamic (Self-Adjusting while Driving)

8SK LED tail lamp assembly

- LED tail lamp assembly

8TC Rear fog lamp for driving on the right

- Rear Fog Lamp for Right Driving

8WH Front fog lamp and cornering lamp

- Front Fog Lamp and Cornering Lamp System

8Y1 Two-tone horn

- Two-Tone Horn Included

8ZQ Antenna for FM reception only, diversity

- Diversity Antenna for FM Reception Only

9E1 Luggage compartment lighting

- Luggage Compartment Lighting

6E3 Center armrest in front

- Front Center Armrest Installed

6K4 Forward collision warning incl. autonomous emergency braking, for adaptive cruise control "high"

- Forward Collision Warning incl. Autonomous Emergency Braking, for Adaptive Cruise Control High

6PC Hand brake lever handle in leather

- Leather hand brake lever handle

6T1 Interior light in footwell

- Interior footwell lighting

6YD Exterior mirrors, power-folding/ power-adjustable, heated, with front passenger exterior mirror lowering f.

- The exterior mirrors are power-folding, power-adjustable, heated, and the front passenger mirror has a lowering function.

7E0 Without heat accumulator/auxiliary heater

- Without heat accumulator/auxiliary heater

7L6 Start/stop system with regenerative braking

- Start/Stop System with Regenerative Braking

7W2 With extended safety system (proactive passenger protection system, basic and front)

- Extended safety system with proactive passenger protection system, basic and front

7Y8 Blind spot monitor

- Features a blind spot monitor

8FC Installation of SLI battery in rear, without second battery

- SLI battery installation in the rear without second battery

8GU Alternator 140 A

- 140 A Alternator Installed

8K3 Separate daytime running lights with automatic headlamp activation and Coming Home feature

- Separate daytime running lights with automatic headlamp activation and coming home feature

8N6 Windshield wiper intermittent control with light/rain sensor

- Windshield Wiper Control with Light/Rain Sensor

8S6 2 reading lights in front

- Front reading lights

8T8 Adaptive cruise control (with "follow-to-stop") and speed limiter

- Adaptive Cruise Control with Speed Limiter

8W1 Washer fluid level indicator

- Washer fluid level indicator

8X0 Without headlamp washer system

- Without Headlamp Washer System

8Z5 Not hot country

- Not Configured for Hot Climate Conditions

9AK Climatronic with impact pressure control, CFC-free

- Climatronic with Impact Pressure Control and CFC-Free

9JA Non-smoker's package

- Non-smoker's package

9M0 Without auxiliary heater/fuel-fired parking heater

✦ No Auxiliary Heater/Fuel-Fired Parking Heater Installed

9S0 Multi-function display/trip computer active info display "Entry"

✦ Multi-Function Display/Trip Computer Active Info Display Entry

9VG Sound system with subwoofer "branded" design 2

✦ Sound system with subwoofer, branded design 2

9ZV Comfort telephony, without antenna connection

✦ Comfort telephony without antenna connection

A8H Top sports equipment

✦ Top sports equipment

AW4 "Standard Plus" version

✦ Standard Plus version

B0A Component parts set without country-specific building regulation

✦ Component Parts Set with No Country-Specific Building Regulations

CQ4 Alloy wheels 7.5J x 18

✦ 18-inch alloy wheels

E0A No special edition

✦ Standard Edition, No Special Version

EF1 ECO function

✦ Eco function for improved fuel efficiency.

EM1 Driver alert system

✦ Driver Alert System Installed

F0A No special purpose vehicle, standard equipment

✦ Standard Equipment, No Special Purpose Vehicle

G12 Shock absorption in front

✦ Front Shock Absorption System

GP0 Vehicles without special upgrade measures

✦ Vehicle Does Not Include Special Upgrade Measures

J2D Battery 380 A (68 Ah)

✦ Battery 380 A (68 AH)

KA1 With rear view camera system (type 1)

✦ Rear View Camera System (Type 1)

LOL Left-hand drive

✦ Left-Hand Drive Configuration

N2T Seat trim covers in fabric

✦ Seat covers made of fabric material

NZ4 Private emergency call system

✦ Private emergency call system

QG1 Service interval prolongation

✦ Service Interval Prolongation Enabled

9P9 Seat belt reminder, electric contact in the buckle, advanced safety equipment

✦ Seat Belt Reminder, Electric Contact in the Buckle, Advanced Safety Equipment

9T0 Without heated washer nozzles

✦ No heated washer nozzles

9WJ Power supply/TV signal for customized installation

✦ Power Supply/TV Signal for Customized Installation

A60 Category 0

✦ Category 0 - Not specified

AV1 Driving on the right

✦ Designed for Driving on the Right Side of the Road

B01 Type approval country Germany

✦ Type Approval for Germany

C21 Operating permit, alteration

✦ Operating permit allows for alteration.

D2L 4-cylinder SI engine 2.0 l/147 kW (16V) turbo FSI, homogeneous, base engine is T59/T61/TQ2/TU2/TD6/TN6/TL5/T6E

✦ 2.0L 4-cylinder turbocharged engine producing 147 kW

EA0 Without follow-on warranty

✦ No Follow-On Warranty Included

EL5 Online service, with OCU, with head unit coding, without engine immobilizer interconnection

✦ Online Service with Overhead Control Unit and Head Unit Coding, Engine Immobilizer Not Integrated

ER1 Regional code "ECE" for radio

✦ Regional Radio Code 'ECE' Enabled

FC1 Customized installation

✦ Customizable installation options available for this vehicle.

G1A 6-speed automatic transmission

✦ 6-speed automatic transmission

I11 Tires 215/40 R18 91W xl

✦ 215/40 R18 91W XL tires

K8G Hatchback

✦ Hatchback

KK3 Refrigerant R1234yf

✦ Uses Refrigerant R1234YF for Cooling

L15 Suspension range 15 installation control only, no requirement forecast

✦ Suspension system installation control for Range 15, without specific forecast requirements

NY0 Standard battery/alternator capacity

✦ Standard battery/alternator capacity

Q4P Sports seats in front

✦ Sport seats are installed in the front.

QH1 Voice control

✦ Voice Control System Included

QI6 Service indicator 30 000 km or 2 years (variable)

✦ Service Indicator Set for 30,000 KM or 2 Years

QK0 Without multifunction camera

✦ Without multifunction camera

QQ3 Interior ambient lighting and surround lighting

✦ Interior Ambient and Surround Lighting Installed

QV3 Digital radio reception

✦ Digital Radio Reception Enabled

SZ9 Delivery by "Autostadt Wolfsburg"

✦ Special delivery available through Autostadt Wolfsburg

U5A Instrument cluster, km/h speedometer

✦ Instrument Cluster with Km/h Speedometer

UB2 Rear shock absorption for sports version

✦ Rear shock absorption for sports version

VOA Tires without specification of tire brand

✦ Tires without specification of tire brand

VL3 Extended and proactive pedestrian protection

✦ Extended and proactive pedestrian protection

X0A Equipment options subset for Germany

✦ Equipment Options Subset Tailored for Germany

QJ3 Chrome package (type 2)

✦ Stylish chrome accents on the exterior.

QN4 Storage compartment under front seat(s)

✦ Storage compartment located under the front seat(s) for additional storage space

QR8 Without dynamic road sign display

✦ Dynamic Road Sign Display Not Included

QZ7 Power steering

✦ Power steering feature present

TD3 4-cylinder SI engine 2.0 l unit 06K.M

✦ 4-cylinder 2.0L engine unit 06K.M

U9C 2 x USB type C

✦ 2 USB Type C ports available

UG1 Hill start assist

✦ Hill Start Assist Feature Included

VF2 Pedal cluster

✦ Pedal cluster design

VT2 Scuff plates in door apertures (illuminated)

✦ Illuminated scuff plates in door apertures

Timeline

3 records found

The timeline of records for this vehicle

● 09/2020 🌐 Country unknown

Manufactured

This vehicle's manufacturing date has been recorded. The listed country may reflect a production or registration location.

● 04/2023 🇩🇪 Germany

Listed for sale

A listing record shows this vehicle was put up for sale. Sometimes, the listing country may differ from the vehicle's actual location.

● 04/2025 🇳🇱 Netherlands

Listed for sale

A listing record shows this vehicle was put up for sale. Sometimes, the listing country may differ from the vehicle's actual location.



+44

Data sources

We checked 1000+ data sources in 48 countries

Helpful tips after reading the report

Every tip you check off helps you avoid unwelcome surprises later. The more you check, the safer your car deal.

Based on this report:

- Verify the low mileage**
Very low mileage sounds great, but make sure it's genuine. Check that the car's physical condition matches what the odometer shows.
 - Compare wear on the driver's seat and steering wheel with the claimed mileage.
 - Check service records for regular date-based maintenance – this matters more than mileage for low-use cars.

Do these checks before buying a car:

- Get a professional inspection**
An expert mechanic can spot hidden issues you might miss. Here's what to do next:
 - Book a pre-purchase inspection at an independent or authorised service
 - Ask the mechanic to check key systems: engine, brakes, suspension, electronics
 - Request written notes or a report of any issues found
- Ask for service records**
Service records show how well the car has been looked after. Here's what to do next:
 - Ask the seller for the car's service book or maintenance records
 - Check for regular oil changes, filter replacements, and timing belt work
 - Note any missing or overdue services
- Check if the mileage matches**
Make sure the mileage in this report matches the car's odometer readings. Here's what to do next:
 - Check the odometer reading against the mileage in the report
 - Watch for signs of tampering (worn pedals, suspicious dashboard fixes)
 - Ask the seller about any differences
- Take a real test drive**
A proper test drive helps you spot problems with performance, handling, or comfort – you'll notice much more on the road than you will in the parking lot. Here's what to do next:
 - Drive on different road types: highway, city traffic, and bumpy or uneven surfaces
 - Listen for strange noises or vibrations
 - Pay attention to handling and comfort
- Compare with similar cars**
Checking other listings helps you know if the asking price is fair – or worth negotiating. Here's what to do next:
 - Search for similar cars online (same make, model, year, mileage)
 - Compare asking prices
 - Look at car condition and equipment
 - Use this info to negotiate with the seller