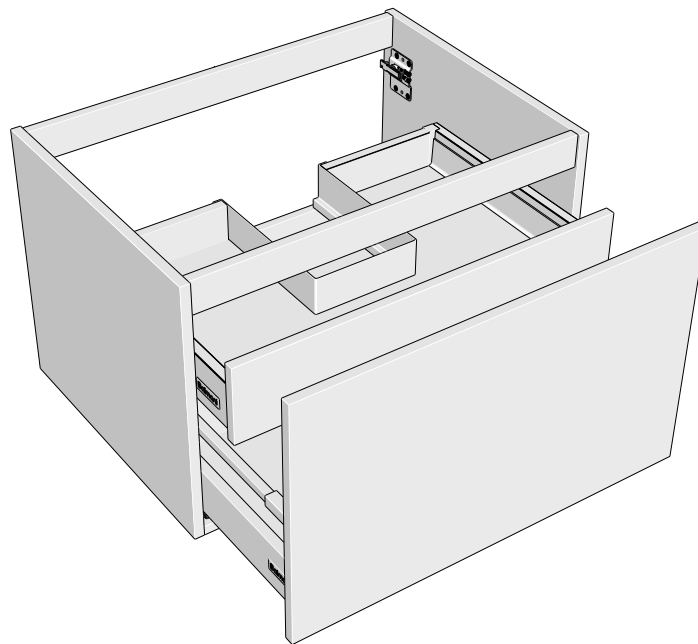
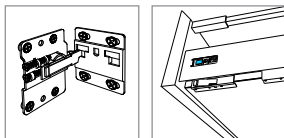


LUCIDA 1+1 DRAWER

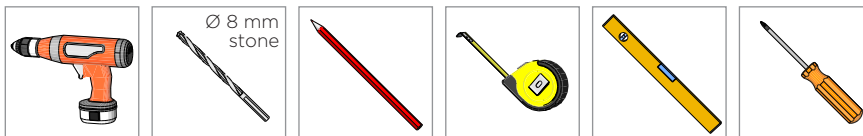
Basin cabinet • Onderbouwkast • Meuble sous-lavabo • Bad-Unterschrank



Hardware



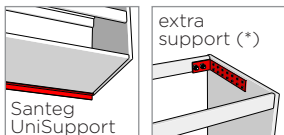
Tools needed



Accessories included



Accessories not included



(*)
 Installation with natural stone tops.
 Installatie met natuursteen tabletten.
 Installation avec tablettes en pierre naturelle.
 Installation mit Naturstein Tablette.

200758_INSTALL_INT_ver2026.2.1

Disclaimer

If you install the product in a way that differs from this manual, this will void all guarantees. Before installation check that the product meets all your requirements and is not damaged. By proceeding with installation, you accept the condition of the product.

Disclaimer

Indien u het product plaatst op een manier die afwijkt van deze handleiding, vervalt alle garantie. Controleer voor plaatsing of het product aan al uw eisen voldoet en niet beschadigd is. Indien u overgaat tot plaatsing, aanvaardt u de staat waarin het product zich bevindt.

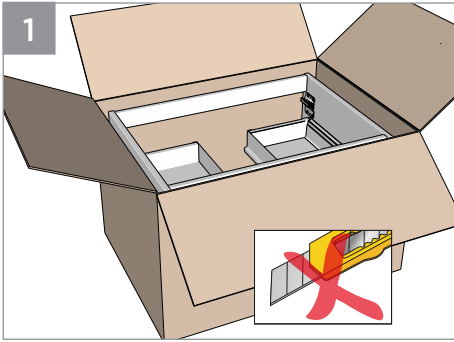
Clause de non-responsabilité

Si vous installez le produit d'une manière différente de celle présentée dans ce manuel, toutes les garanties seront invalidées. Contrôlez avant le placement si le produit répond à toutes vos exigences et n'est pas endommagé. En procédant au placement, vous acceptez l'état dans lequel se trouve le produit.

Haftungsausschluss

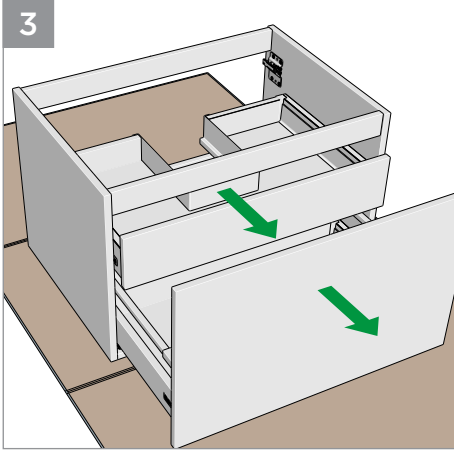
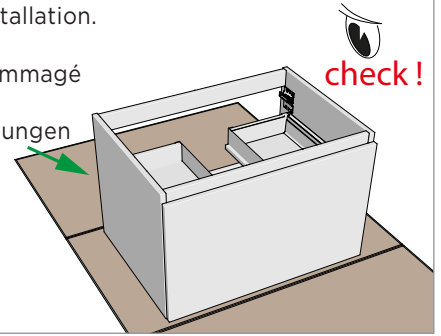
Wenn Sie das Produkt nicht genau nach den Angaben in dieser Montageanleitung einbauen, verfällt die Garantie. Überprüfen Sie vor dem Einbau des Produkts, ob sämtliche Voraussetzungen erfüllt sind und das Produkt nicht beschädigt ist. Sobald Sie mit der Montage beginnen, sehen Sie, in welchem Zustand sich das Produkt befindet.

UNPACKING & PREPARATION - UITPAKKEN & VOORBEREIDEN - DÉBALLAGE & PRÉPARATION
AUSPACKEN & VORBEREITUNG

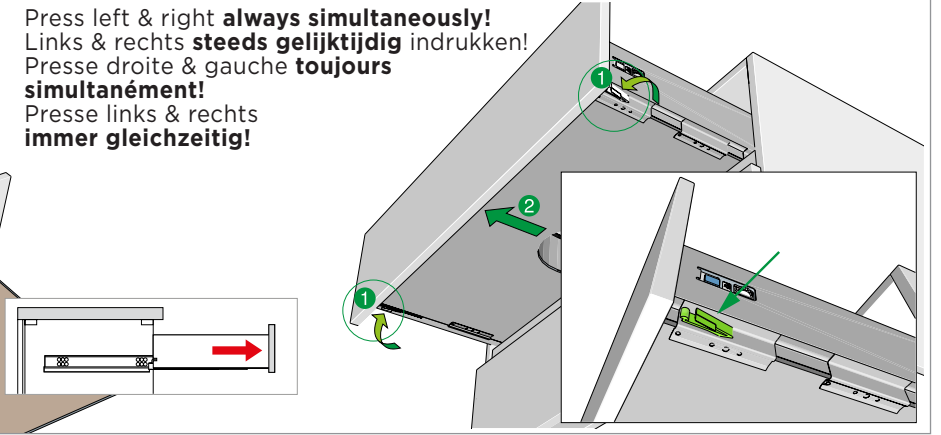


2 Check for damage before starting installation.
 Controleer op schade vóór montage.
 Contrôler si le produit n'est pas endommagé avant montage.
 Prüfen sie das Produkt auf Beschädigungen vor der Installation.

Protect against damage.
 Beschermen tegen beschadiging.
 Protéger contre les dommages.
 Zum schutz vor Beschädigungen.

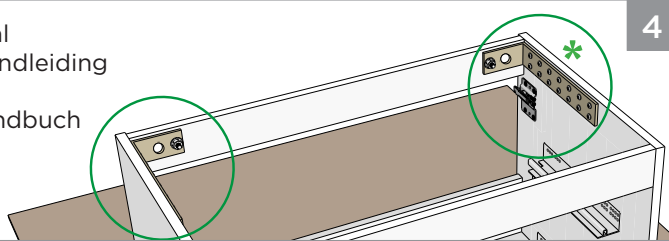


Press left & right **always simultaneously!**
 Links & rechts **steeds gelijktijdig** indrukken!
 Presse droite & gauche **toujours simultanément!**
 Presse links & rechts **immer gleichzeitig!**

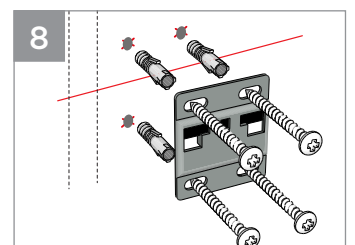
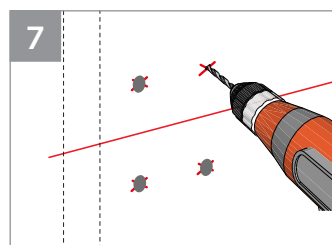
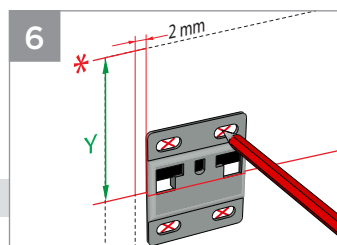
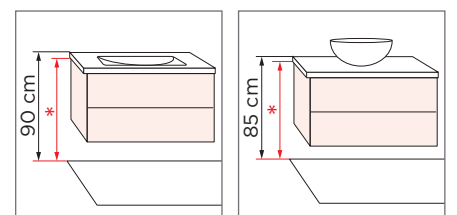
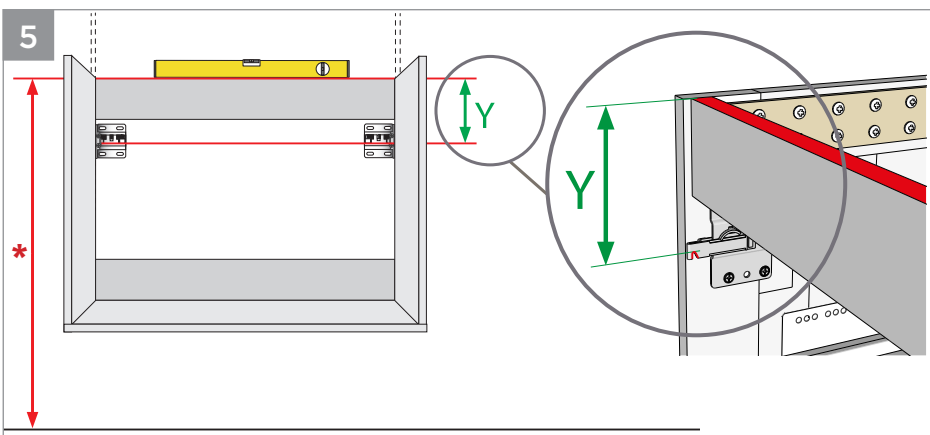


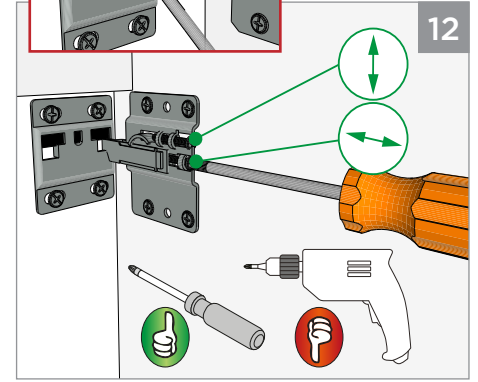
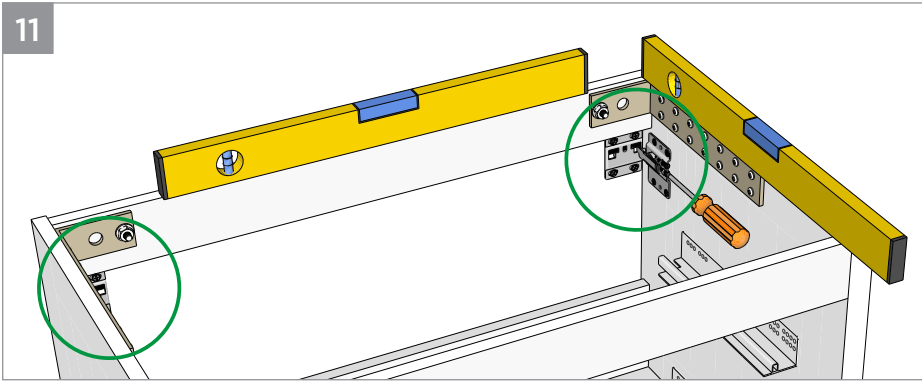
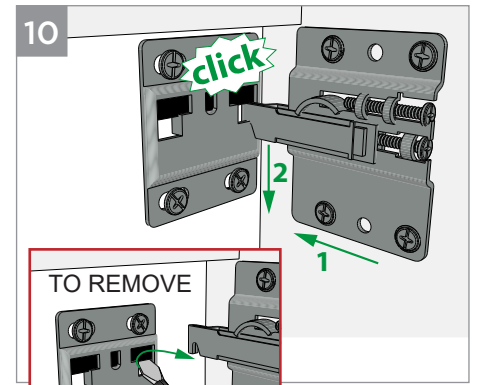
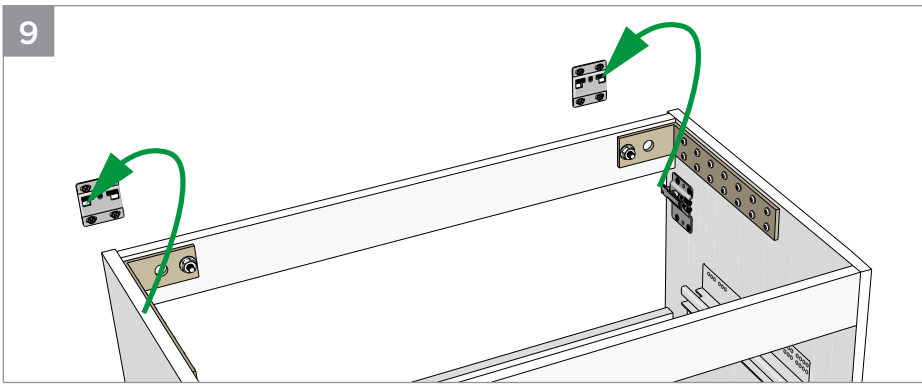
EXTRA WALL FIXATION (with natural stone tablet) - EXTRA MUURFIXATIE (bij natuursteen tablet)
 EXTRA SUPPORT MUR (avec tablette en pierre naturelle) - EXTRA WANDHALTER (mit Natursteintablette)

* See separate manual
 Zie afzonderlijke handleiding
 Voir manuel séparé
 Siehe separates Handbuch

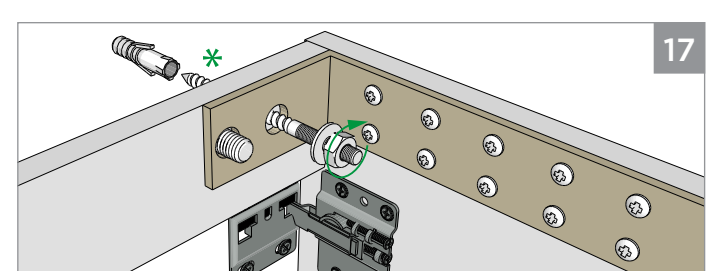
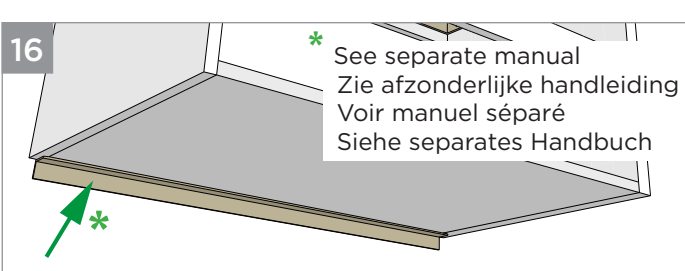
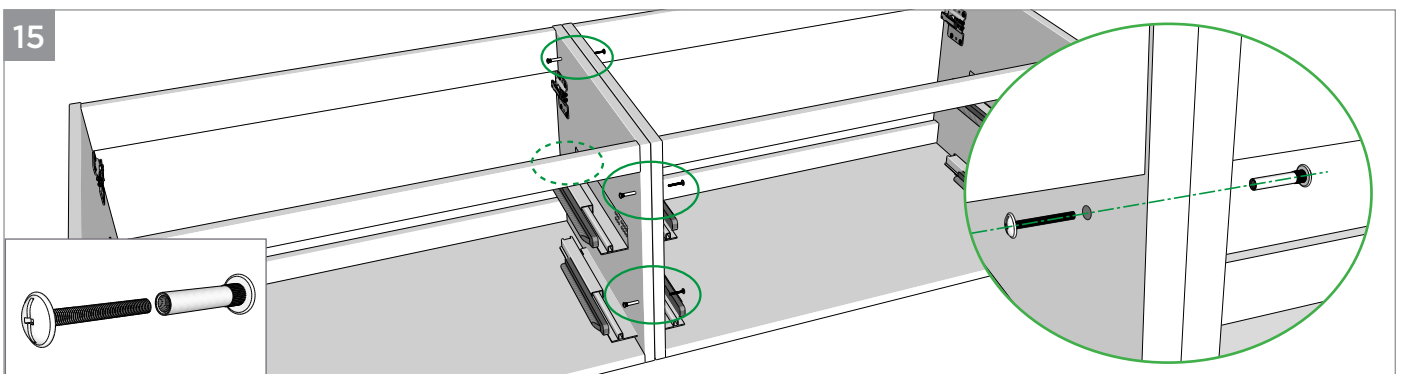
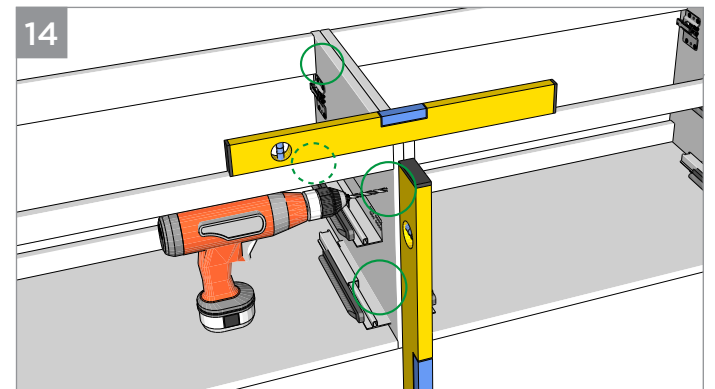
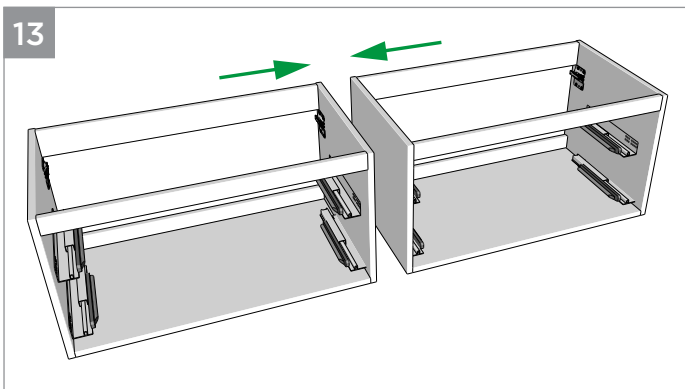


WALL FIXATION - MUURFIXATIE - FIXATION AU MUR - WANDMONTAGE





2 CABINETS - 2 KASTEN - 2 ARMOIRES - 2 SCHRANKEN



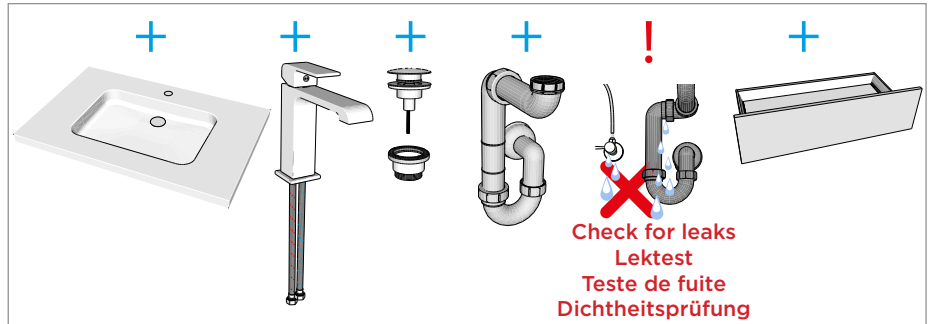
ASSEMBLY TOP, FAUCET AND DRAIN - MONTAGE TABLET, KRAAN EN SIFON
ASSEMBLAGE TABLETTE, ROBINET ET SIPHON - MONTAGE TABLET, HAHN UND SIPHON

Please refer to the manuals of the top, washbasin, faucet and siphon for further steps in the installation.

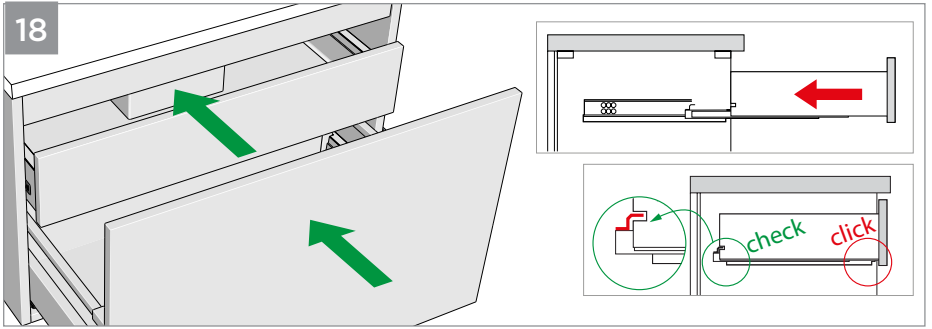
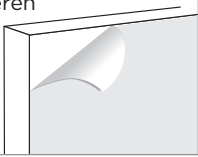
Raadpleeg de handleidingen van de tablet, waskom, kraan en sifon voor verdere stappen in de installatie.

Veuillez vous référer aux manuels de la tablette, le lavabo, robinet et siphon pour les autres étapes de l'installation.

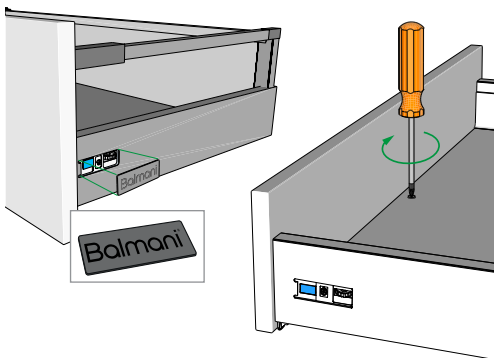
Beachten Sie den Handbüchern zu Tablette, Waschbecken, Wasserhahn und Siphon für weitere Schritte in der Installation.



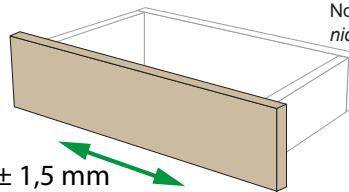
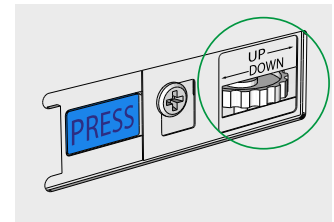
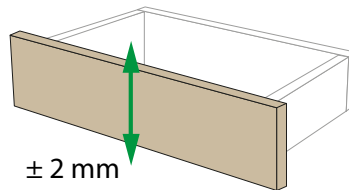
Remove protective foil
 Beschermfolie verwijderen
 Retirer le film de protection
 Schutzfolie entfernen



DRAWER FRONT ADJUSTMENT - LADEFRONT REGELEN - RÉGLAGE DU FAÇADE TIROIR - SCHUBLADENEINSTELLUNG



Move left & right
always simultaneously!
 Links & rechts
steeds gelijktijdig draaien!
 Changer droite & gauche
toujours simultanément!
 Links & rechts
immer gleichzeitig verdrehen!



Not recommended
 Niet aanbevolen
 Non recommandé
 nicht empfohlen

